



2100 South Clearwater Drive
Des Plaines, IL 60018
Phone: 800-566-2100
Fax: 847-803-5454
www.geberitnorthamerica.com

REPAIR PARTS

FITTING NO.

131-ABNF

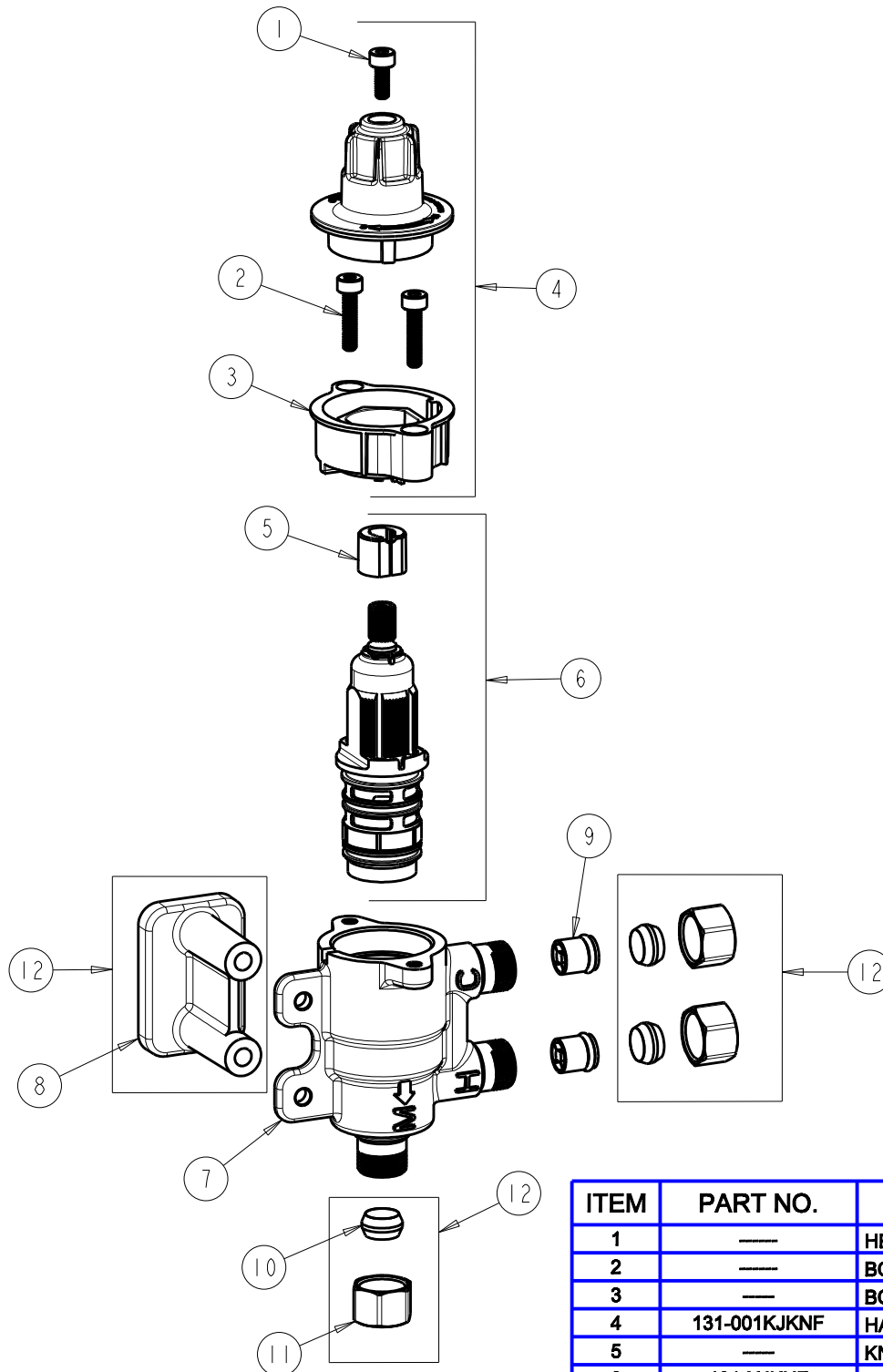
SUBMITTED MODEL NO.

ITEM NO.

FOR TECHNICAL ASSISTANCE
1-800-TEC-TRUE (1-800-832-8783)

BY: SID DATE: 03-11-11

CHK: *[Signature]* REV:



ITEM	PART NO.	DESCRIPTION
1	----	HEX SCREW, M4x0.7x10mm
2	----	BONNET HEX SCREW, M4x0.7x18mm
3	----	BONNET
4	131-001KJKNF	HANDLE KIT
5	----	KNOB LOCATOR
6	131-XJKNF	CARTRIDGE KIT
7	----	VALVE BODY NOT SOLD SEPARATELY
8	----	SPACER
9	550-009JKNF	CHECK CARTRIDGE ASSEMBLY
10	----	FERRULE, 3/8 TUBE
11	----	COMPRESSION NUT, 3/8 TUBE
12	131-003KJKNF	THERMOSTATIC NUT/FERRULE KIT