

CHICAGO[®]
FAUCETS

2100 SOUTH CLEARWATER DRIVE
DES PLAINES, ILLINOIS 60018-5999

FITTING NO.

980-937CHAGV

SUBMITTED MODEL NO.

JOB NAME

ITEM NO.

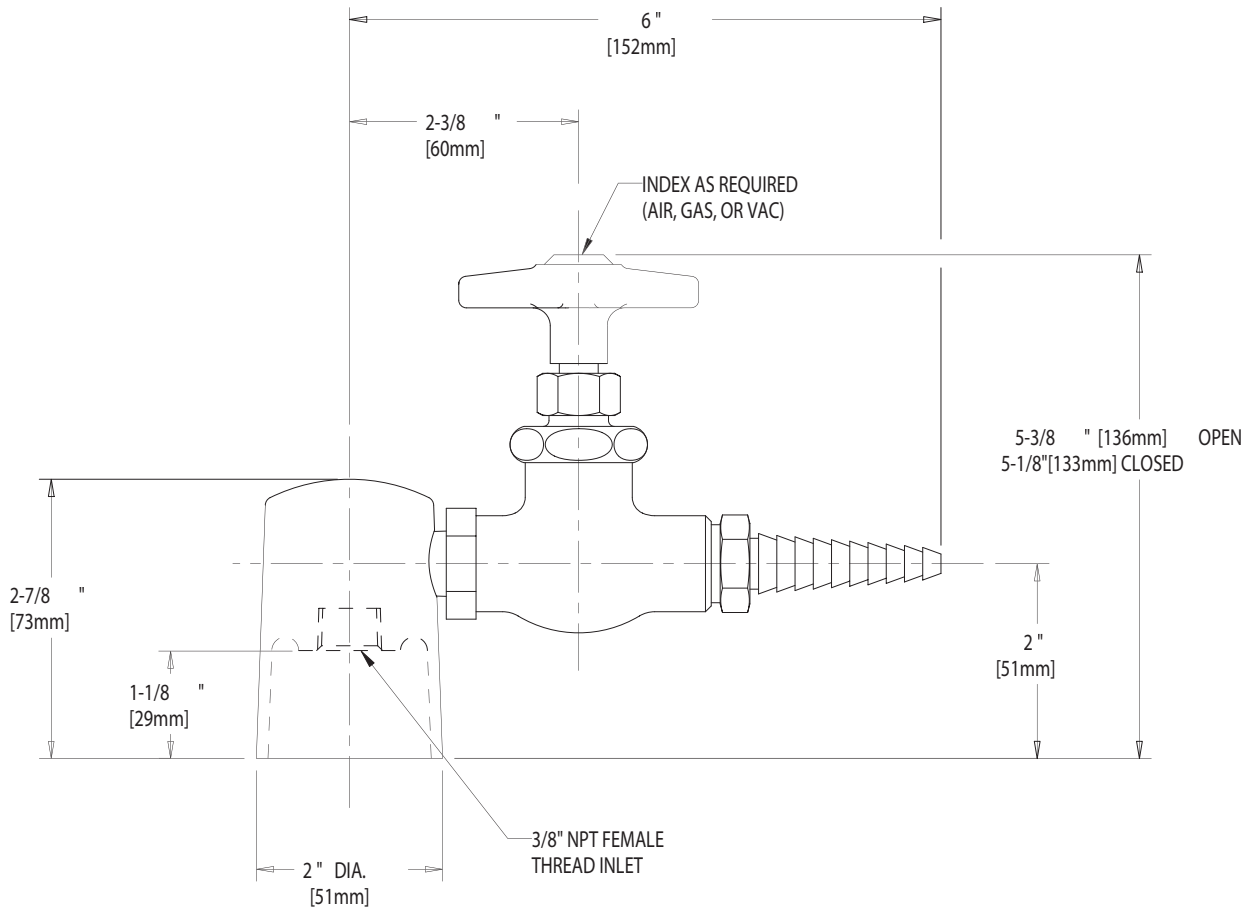
SUBMITTED AS SHOWN

SUBMITTED AS NOTED

SEE ATTACHED FOR
SUBMITTED MODIFICATION

IS ASSUMED FOR USE OF SUPERCEDED OR VOIDED DATA. (0192-1)

ROUGHING IN DIMENSIONS MAY VARY AND ARE SUBJECT TO CHANGE. NO RESPONSIBILITY



DIMENSIONS IN INCHES AND [MILLIMETERS].

TECHNICAL DATA

- TURRET WITH ONE SIDE OUTLET
- 937CH NEEDLEPOINT VALVE
- E7 SERRATED NOZZLE
- 204 LABORATORY HANDLE
- FINISH AS SPECIFIED

DATE: 7-17-01

BY: JAR

CHK'D:

APP'D:

REV:

980-937CHAGV