

JOB NAME

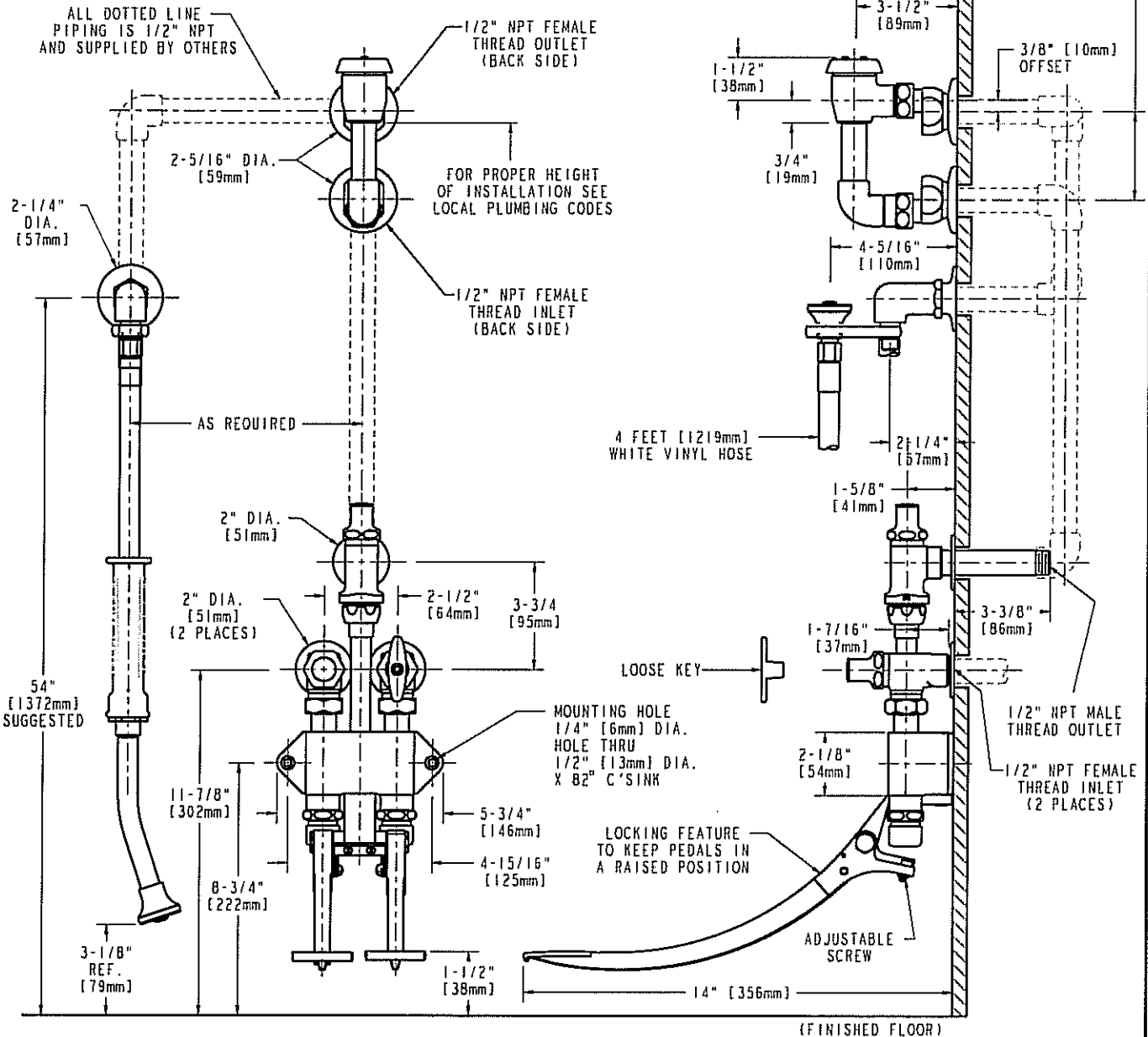
ITEM NO.

SUBMITTED AS SHOWN

SUBMITTED AS NOTED

SEE ATTACHED FOR
SUBMITTED MODIFICATION

ROUGHING IN DIMENSIONS MAY VARY AND ARE SUBJECT TO CHANGE. NO RESPONSIBILITY IS ASSUMED FOR USE OF SUPERCEDED OR VOIDED DATA.



TECHNICAL DATA

- WALL MOUNTED PEDAL VALVE CONCEALED BED PAN FLUSHER
- 625-XSLO NAIAD ADJUSTABLE SLOW-CLOSING CARTRIDGES
- LOOSE KEY STOPS
- SLO-COMPRESSION OPERATING CARTRIDGES
- 892G ELEVATED VACUUM BREAKER
- FINISH: CHROME PLATE
- ANGLE VALVE WITH VOLUME CONTROL
- VOLUME CONTROL UNIT
- 777-019K HAND SPRAY OUTLET
- 4 FEET [1219mm] WHITE VINYL HOSE
- ASME A112.18.1M COMPLIANT
- CSA B125 COMPLIANT

DATE: 10-4-06

BY: JAR

CHK'D:

APP'D: *RY*

REV:

910-GSLO777-19K