

CHICAGO FAUCETS
a Geberit company

2100 South Clearwater Drive
Des Plaines, IL 60018
Phone: 847-803-5000
Fax: 847-803-5454
www.chicagofaucets.com

ROUGH-IN

FITTING NO.

910-G777-16KCP

FOR TECHNICAL ASSISTANCE
1-800-TEC-TRUE (1-800-832-8783)

BY: SID DATE: 03-06-09
CHK: [Signature] REV:

SUBMITTED MODEL NO.

SUBMITTED AS SHOWN

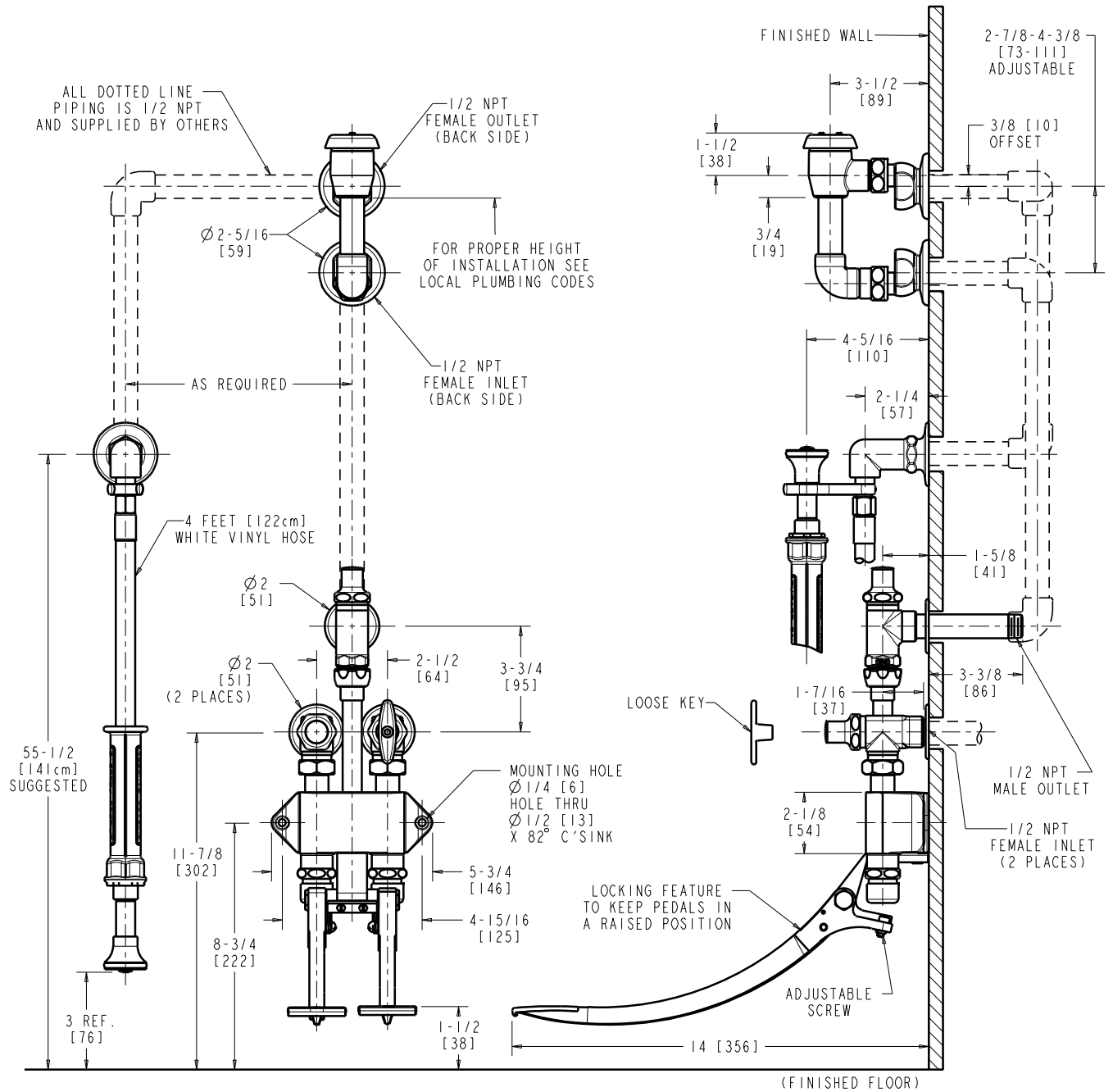
SUBMITTED AS NOTED

SEE ATTACHED FOR SUBMITTED MODIFICATION

JOB NAME

ITEM NO.

ROUGHING IN DIMENSIONS MAY VARY AND ARE SUBJECT TO CHANGE. NO RESPONSIBILITY IS ASSUMED FOR USE OF SUPERCEDED OR VOIDED DATA.



DIMENSIONS ARE IN INCHES AND [MILLIMETERS].

TECHNICAL DATA

- WALL MOUNTED PEDAL VALVE CONCEALED BED PAN FLUSHER
- 293-006 LOOSE KEY TEE HANDLE
- 625X NAIAD PUSH BUTTON CARTRIDGES
- SLO-COMPRESSION OPERATING CARTRIDGES
- ANGLE VALVE WITH VOLUME CONTROL
- SLO-COMPRESSION METAL VOLUME CONTROL OPERATING CARTRIDGE
- FINISH: CHROME PLATE

- 892-G CONCEALED PIPING ELEVATED VACUUM BREAKER
- 777-016K HAND SPRAY OUTLET
- 4 FEET [122cm] WHITE VINYL HOSE
- ASME A12.18.1/CSA B125.1 COMPLIANT
- ASSE 1001 COMPLIANT