

# CHICAGO FAUCETS

2100 SOUTH CLEARWATER DRIVE  
DES PLAINES, ILLINOIS 60018-5999

FITTING NO.

895-L5VB

SUBMITTED MODEL NO.

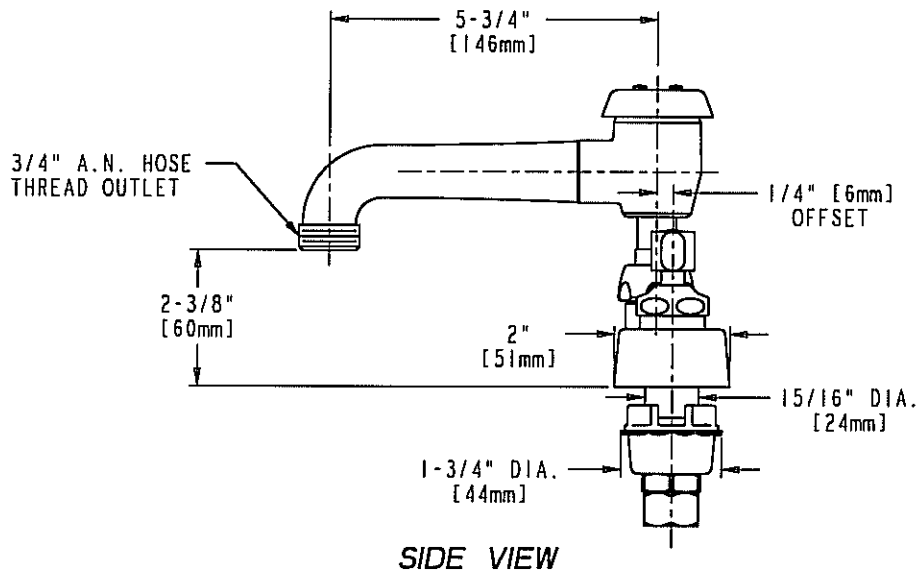
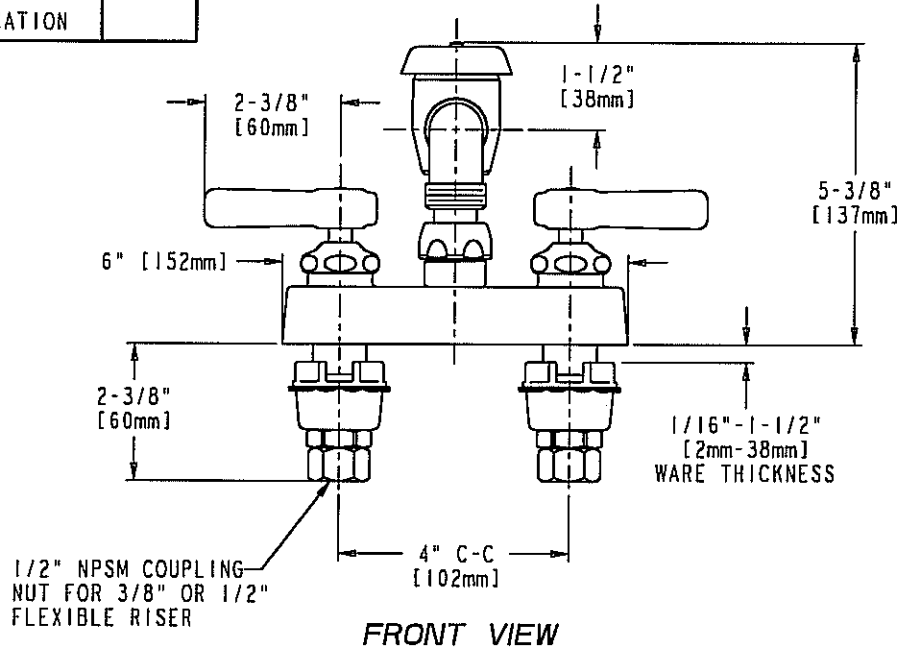
JOB NAME

ITEM NO.

SUBMITTED AS SHOWN

SUBMITTED AS NOTED

SEE ATTACHED FOR  
SUBMITTED MODIFICATION



DIMENSIONS IN INCHES AND [MILLIMETERS].

**TECHNICAL DATA**

- SERVICE SINK FITTING
- L5VB SWING VACUUM BREAKER SPOUT
- 369 INDEXED LEVER HANDLES
- QUATURN UNITS
- POLISHED CHROME FINISH OR AS SPECIFIED

- 3/4" A.N. HOSE THREAD OUTLET
- ANSI A112.18.1 COMPLIANT
- CSA B125 COMPLIANT

DATE: 03-21-97

BY: MGM

CHK'D: TW

APP'D:

REV:

895-L5VB

ROUGHING IN DIMENSIONS MAY VARY AND ARE SUBJECT TO CHANGE. NO RESPONSIBILITY IS ASSUMED FOR USE OF SUPERCEDED OR VOIDED DATA. (0192-1)