

CHICAGO FAUCETS

Last As Long As The Building



2100 SOUTH CLEARWATER DRIVE
DES PLAINES, ILLINOIS 60018-5999

FITTING NO.

778-VBG

SUBMITTED MODEL NO.

JOB NAME

ITEM NO.

SUBMITTED AS SHOWN

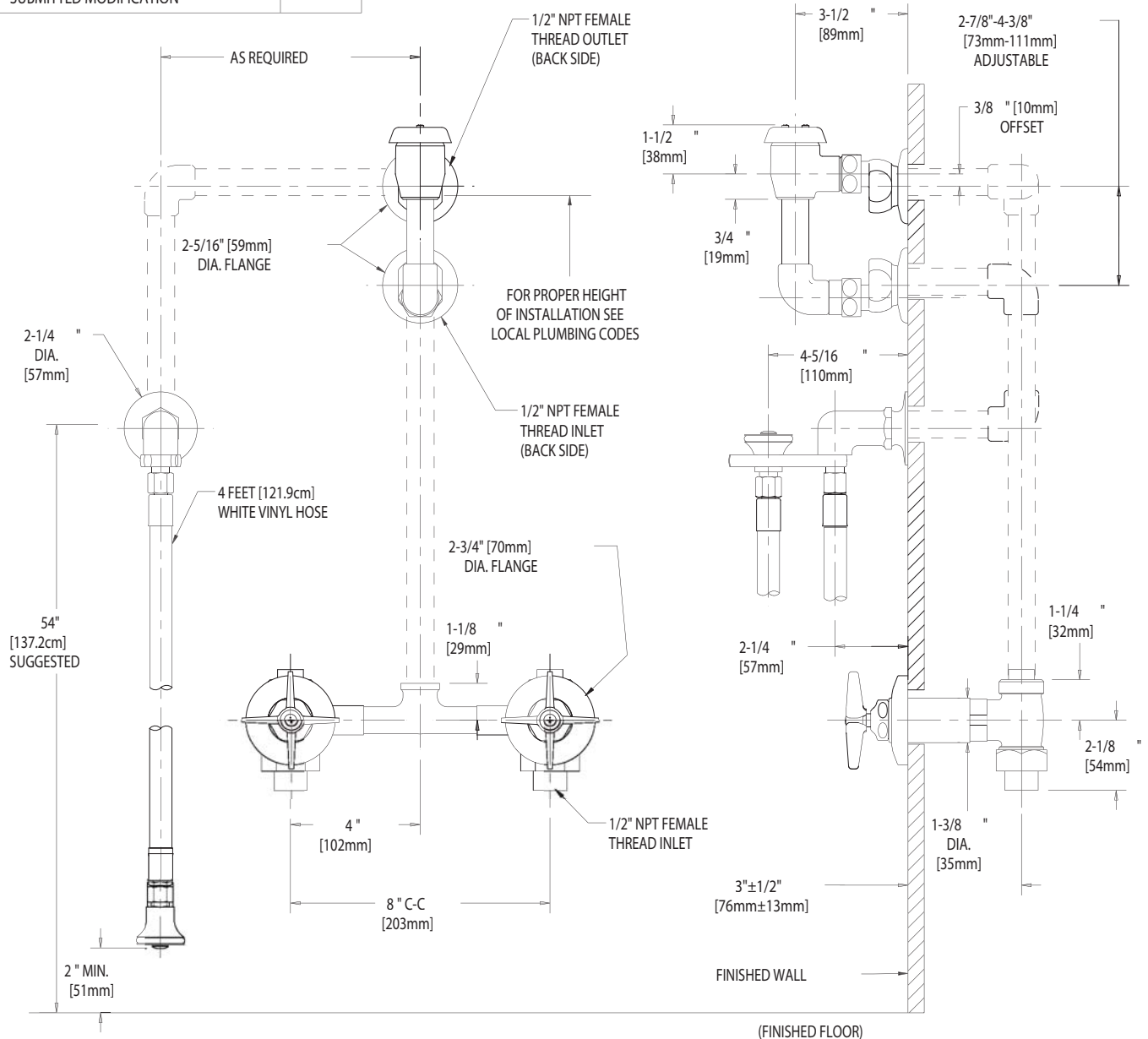
SUBMITTED AS NOTED

SEE ATTACHED FOR
SUBMITTED MODIFICATION

NOTE: ALL DOTTED LINE PIPING
IS 1/2" IPS UNLESS OTHERWISE
SPECIFIED AND SUPPLIED BY OTHERS.

IS ASSUMED FOR USE OF SUPERCEDED OR VOIDED DATA.

ROUGHING IN DIMENSIONS MAY VARY AND ARE SUBJECT TO CHANGE. NO RESPONSIBILITY



DIMENSIONS IN INCHES AND [MILLIMETERS].

TECHNICAL DATA

- WALL MOUNTED BED PAN FLUSHER
- 633 INDEXED CROSS HANDLES
- SLO-COMPRESSION CARTRIDGES
- 892G ELEVATED VACUUM BREAKER
- FINISH: CHROME PLATE

- E21 RUBBER BOUND SPRAY OUTLET
- 4 FEET [121.9cm] WHITE VINYL HOSE
- ASME A112.18.1M COMPLIANT
- CSA B125 COMPLIANT

DATE: 05-14-02

BY: SID

CHK'D:

APP'D:

REV: A

778-VBG