

ROUGHING IN DIMENSIONS MAY VARY AND ARE SUBJECT TO CHANGE. NO RESPONSIBILITY IS ASSUMED FOR USE OF SUPERCEDED OR VOIDED DATA. (0192-1)

CHICAGO[®] FAUCETS

2100 SOUTH CLEARWATER DRIVE
DES PLAINES, ILLINOIS 60018-5999

FITTING NO.

778-SVB

SUBMITTED MODEL NO.

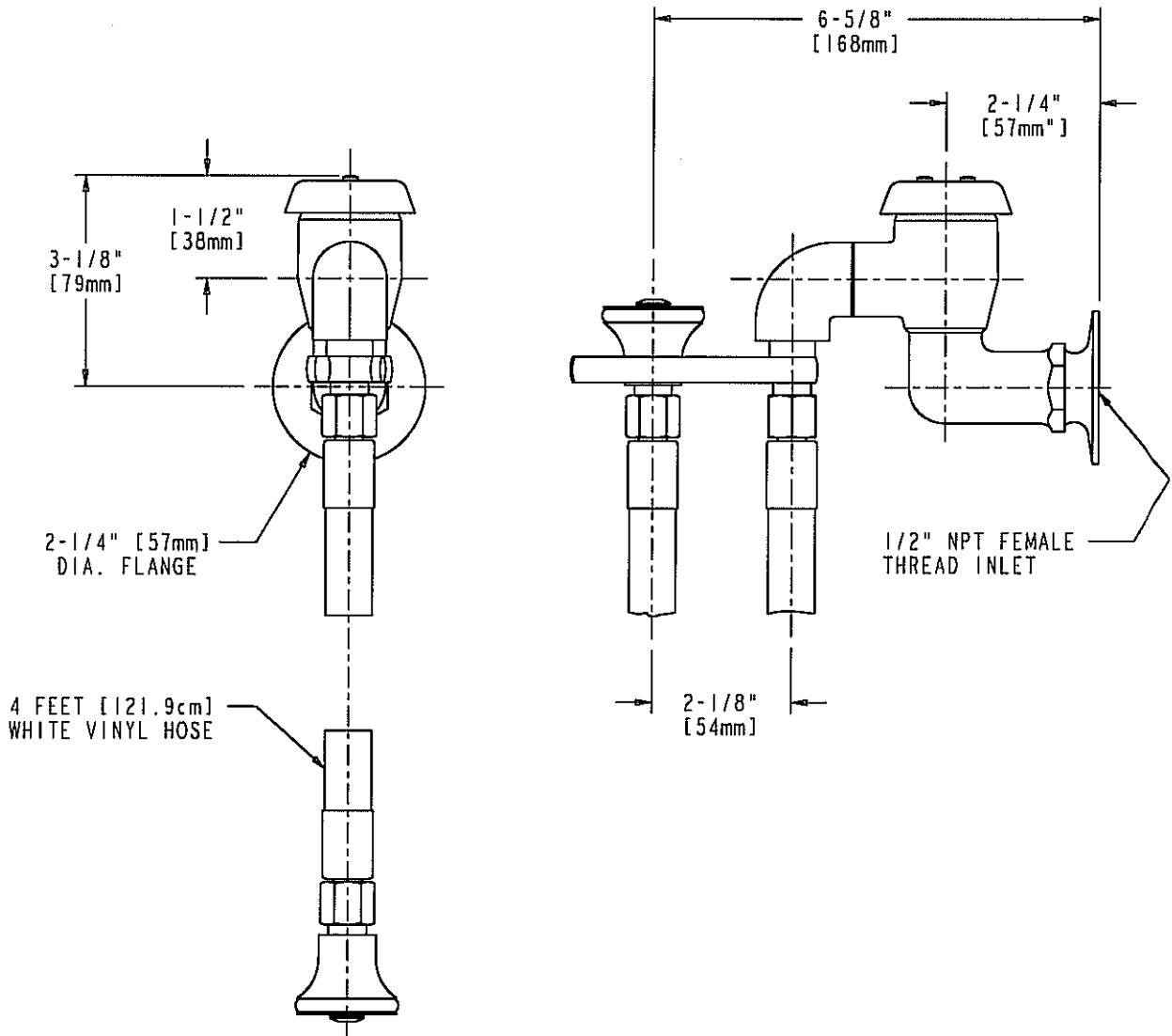
JOB NAME

ITEM NO.

SUBMITTED AS SHOWN

SUBMITTED AS NOTED

SEE ATTACHED FOR
SUBMITTED MODIFICATION



TECHNICAL DATA

- WALL MOUNTED OUTLET WITH SPRAY
- ATMOSPHERIC VACUUM BREAKER
- 4 FEET [121.9cm] WHITE VINYL HOSE
- POLISHED CHROME FINISH

- E21 SPRAY OUTLET
- ANSI A112.18.1 COMPLIANT
- CSA B125 COMPLIANT

DATE: 07-15-97

BY: MGM

CHK'D: *PT*

APP'D:

REV: 07-15-97

778-SVB