



a Geberit company

2100 South Clearwater Drive
Des Plaines, IL 60018
Phone: 847-803-5000
Fax: 847-803-5454
www.chicagofaucets.com

REPAIR PARTS

BY: JAR DATE: 10-22-13

CHK: REV:

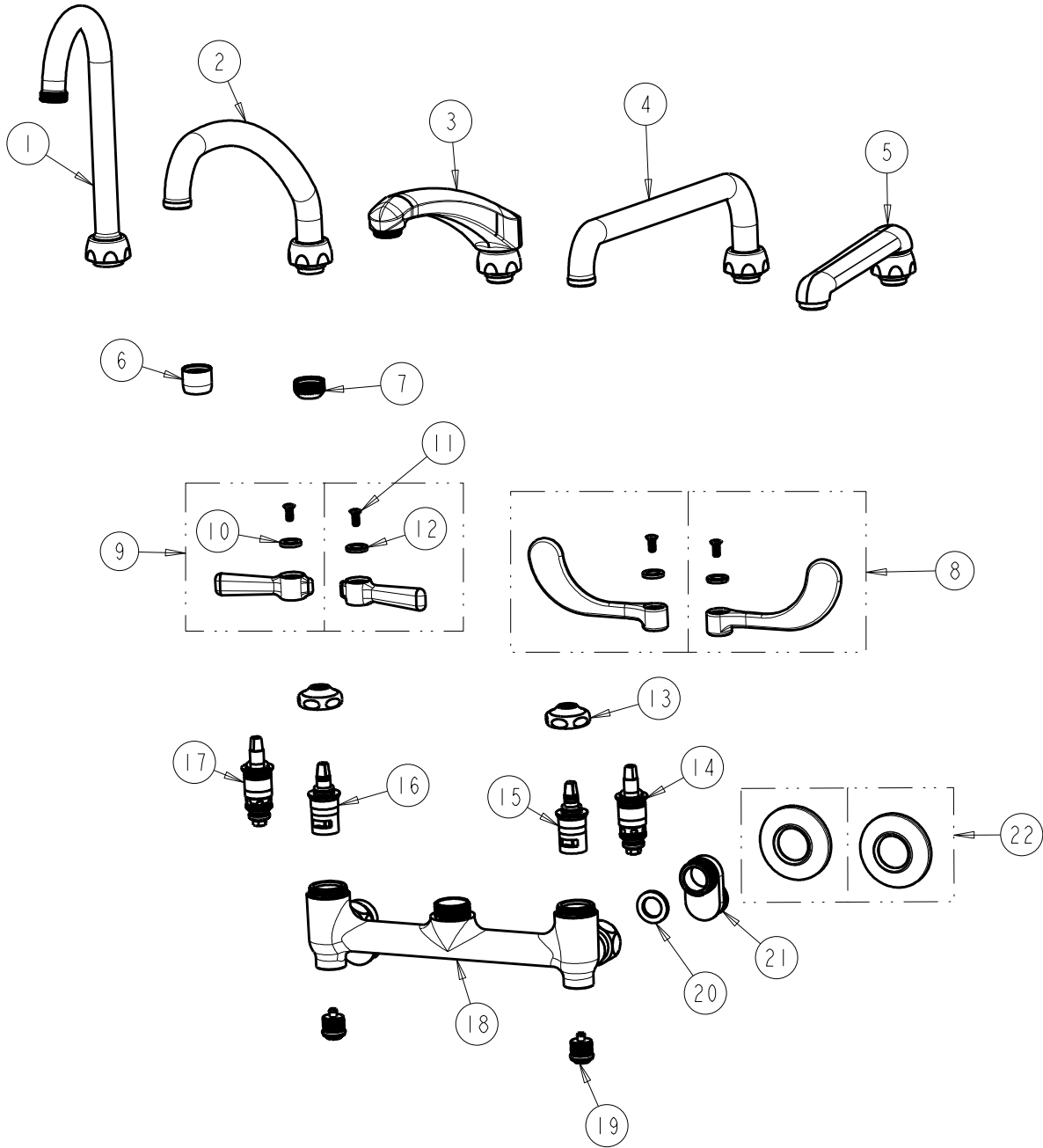
FITTING NO.

640-SERIES

SUBMITTED MODEL NO.

ITEM NO.

FOR TECHNICAL ASSISTANCE
1-800-TEC-TRUE (1-800-832-8783)



ITEM	PART NO.	DESCRIPTION	ITEM	PART NO.	DESCRIPTION
1	GN1AJKABCP	SPOUT	12	633-123JKNF	INDEX BUTTON (BLUE)
2	L9LEQJAB	SPOUT	13	1-214JKCP	CAP
3	L8LEQJAB	SPOUT	14	1-099XTJKABNF	QUATURN CARTRIDGE (RH)
4	L12LEQJAB	SPOUT	15	1-099XKJKABNF	RH CERAMIC CARTRIDGE
5	S6LEQJAB	SPOUT	16	1-100XKJKABNF	LH CERAMIC CARTRIDGE
6	E35JKABCP	SOFTFLO AERATOR 1.5 GPM	17	1-100XTJKABNF	QUATURN CARTRIDGE (LH)
7	E1JKABRCF	QUIXTOP OUTLET	18	-----	8" VALVE BODY ASSY
8	317-PRJKCP	HANDLE, 4" WRISTBLADE (PAIR)	19	640-003JKNF	KIT, STOP
9	369-PRJKCP	LEVER HANDLE ASSEMBLY (PAIR)	20	1-011JKABNF	RUBBER WASHER
10	633-023JKNF	INDEX BUTTON (RED)	21	-----	ARM (NOT SOLD SEPERATELY)
11	420-010JKRCF	SCREW, 10-32 UNC PH 1/2	22	640-001JKCP	KIT, FLANGE (2)