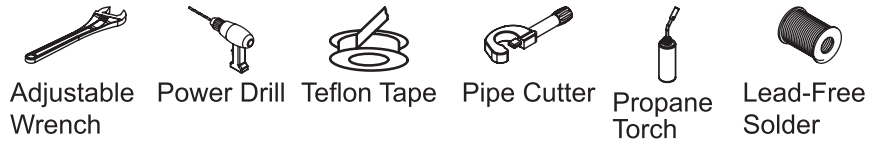


Central Brass Company, Inc.
 3325 S. Garfield Ave.
 Commerce, CA 90040
 (800) 321-8630
 www.centralbrass.com

Tools:



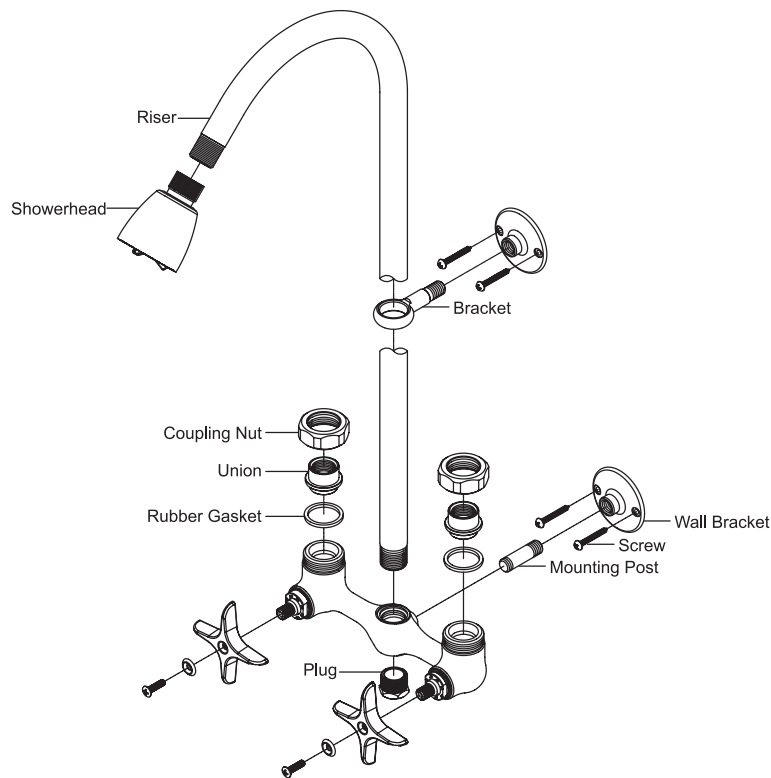
Model Number: 1379, 1380 Series

Warnings and Notes:

Check with local plumbing code requirements before installation.
 This product should be installed by a local listed plumber.
Do not use plumbers putty on threads.

Installation Steps:

Two Handle Exposed Shower Set



- (1) Measure the proper places to mount the wall brackets then drill four 3/32" holes for wall brackets' screw holes.
- (2) **For IPS connection:** Apply Teflon tape onto the thread end of inlet pipe line, slide coupling nut onto inlet pipe line, screw and tighten the union to inlet pipe thread end. Repeat the same procedure to connect the other inlet pipe line.
For CXC connection: Slide coupling nut onto inlet pipe line, solder inlet pipe line to the union. Repeat the same procedure to connect the other inlet pipe line.
- (3) Screw the shorter thread end of mounting post into faucet body then screw wall bracket to the other end of mounting post. Slide bracket onto riser then screw wall bracket to the thread end of bracket. Apply Teflon tape onto both thread ends of the riser. Carefully screw and tighten the spout straight into the top of faucet's center hole.
- (4) With rubber gasket under the union, tighten coupling nut of both sides to faucet inlet with the help of a wrench. Screw in the four screws to hold wall brackets secure. Apply Teflon tape onto the thread end of the plug, screw & tighten plug onto the bottom of faucet's center hole with the help of a wrench. Attach showerhead to the thread end of the riser.