

Central Brass

C O M P A N Y

A Division of Pioneer Industries, Inc.

Installation Guide

Two Handle Widespread Lavatory Faucet:

- 101186 Series
- 181186 Series
- 101125 Series
- 181125 Series
- 1172 Series (Only Lavatory Faucets)
- 81172 Series (Only Lavatory Faucets)
- 1125 Series
- 81125 Series
- 201186 Series
- 281186 Series
- 201125 Series
- 281125 Series

This product meets the following standards:

- ASME A112.18.1
- ANSI A117.1
- CUPC / IAPMO LISTED / ADA COMPLIANT (Only Lever Handles)
- CONTAINS NO MORE THAN 0.25% WEIGHTED AVERAGE LEAD CONTENT



Thank You For Choosing Central Brass Products

Thank you for purchasing this quality product.

Central Brass products are rigorously tested to provide long service under normal conditions. Prior to installation, familiarize yourself with this products diagram.

Make sure that you have all of the illustrated parts for your Central Brass product before installation.

Care Instructions

Central Brass products are designed and engineered under strict quality standards. The Central Brass Collection of PVD finishes feature a strong and durable surface that will keep your fixture looking exquisite for a lifetime.

To ensure the beautiful appearance of your Central Brass product, please adhere to the following simple care instructions:

- Use clean water to clean the surface of the faucet and dry with a 100% cotton cloth.
- You may also use any non-abrasive wax, along with a soft cotton cloth to brighten the surface and provide future protection of the finish.
- Do not use detergents, harsh cleaners, abrasive cleaners, cloths, and cleaning agents.

CENTRAL BRASS LIMITED WARRANTY

The Central Brass Company provides to the original consumer the following warranties for Genuine Central Brass manufactured products and components used in commercial or residential applications.

Central Brass Company will replace, free of charge, to the original consumer purchaser, any and all parts that prove defective under normal installation, use, and service. This warranty does not cover damage or defects due to normal wear and tear, misuse, abuse, accident, or improper installation. Replacement parts can be obtained from your local dealer or directly from Central Brass Company. Central Brass Company recommends using a certified plumber for all faucet installation and repair. Dated proof of purchase must accompany all warranty claims.

FAUCET WARRANTY

The Faucet, defined as any metal cast, forged, stamped or formed portion of the product, not including moving parts or other components covered under other Central Brass warranties, is warranted against manufacturing defects for the life of the product.

CARTRIDGE WARRANTY

Genuine Central Brass cartridges incorporated in Central Brass products are warranted against manufacturing defects for a period of five (5) years from the date of purchase.

SENSOR FAUCETS

The mechanics of the Central Brass Sensor Faucets are warranted for five (5) years from the date of installation. The electronics and solenoid are warranted for a period of one (1) year from the date of installation.

FINISH WARRANTY - COMMERCIAL

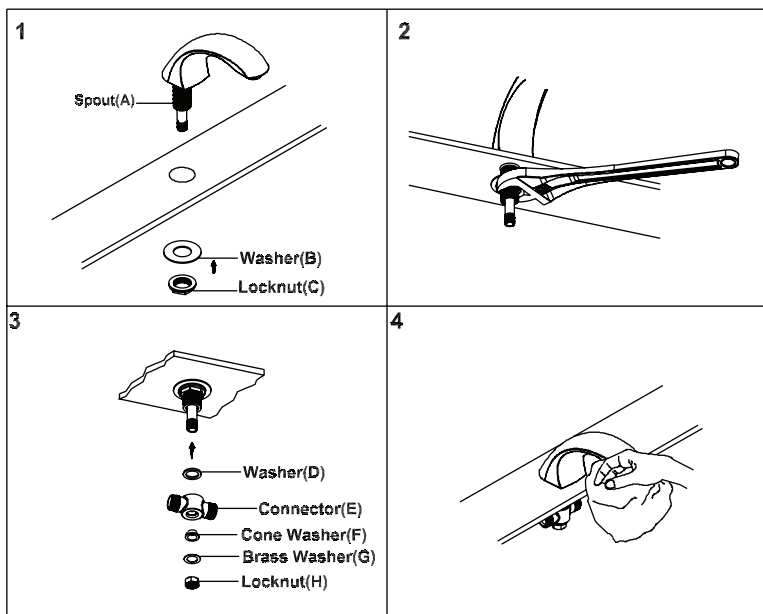
PVD finishes installed in public or commercial areas are warranted not to corrode, tarnish or discolor for a period of five (5) years from date of purchase.

FINISH WARRANTY – RESIDENTIAL

PVD finishes installed in residential use applications are warranted not to corrode, tarnish or discolor for the life of the product.

Faucet Installation

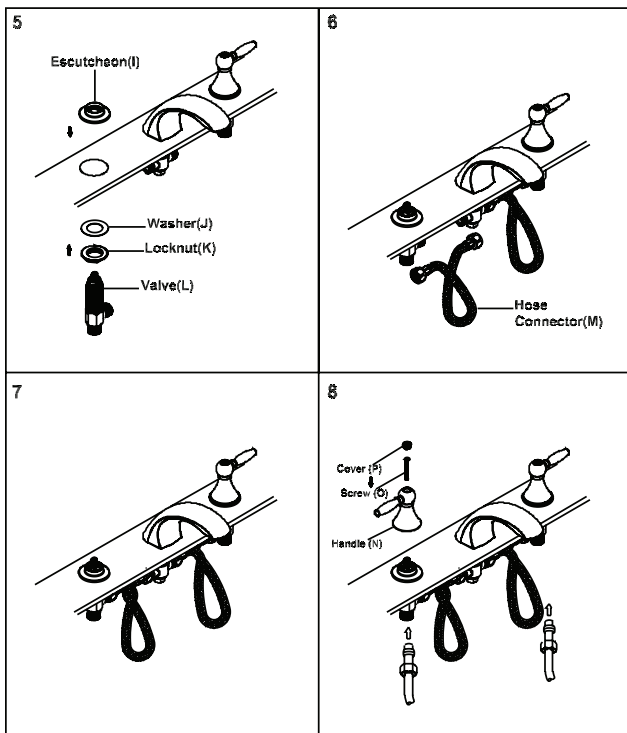
1. Apply the plumbers putty underneath of the spout (A). Slide the spout (A) through center mounting hole. Slide the mounting washer (B) through spout shank from underside of center mounting hole.
2. Thread and tighten the spout locknut (C) with the help of 1-5/32" socket set. Do not overtighten.
3. For the Faucet W/Pop-Up Drain:- Slide the connector (E) through spout shank. Ensure the washer (D) is placed inside the connector (E). Slide the cone washer (F) with the bigger end facing down through the spout shank. Slide the brass washer (G) through spout shank. Thread the locknut (H) to the spout shank. For the Faucet Less Pop-up Drain:- Ensure washer (D) is placed inside the connector (E). Thread the connector (E) to the spout shank.
4. Remove excess plumbers putty from the mounting surface



Faucet Installation

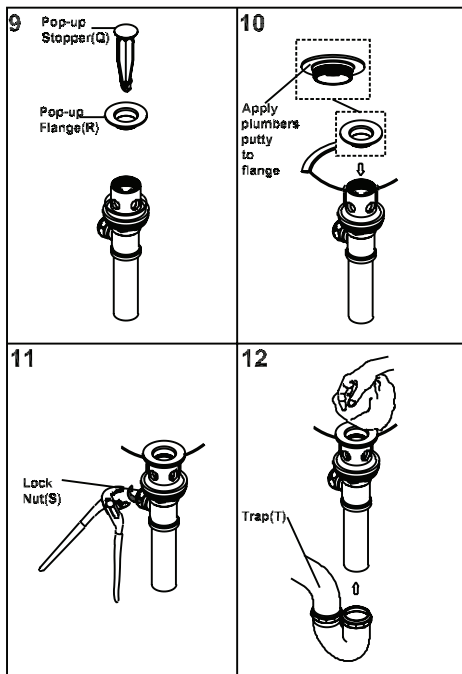
5. Place the valve escutcheon (I) from the top. Apply the plumbers putty underneath of the escutcheon (I). The hot side valve should have 'Hot' marking and the cold side should have 'Cold' marking. Insert the cold side valve (L) with washers (J) and locknut (K) through mounting hole from underneath of the sink. Thread the escutcheon (I) on the valve (L). Adjust the valve to proper height. Make sure the valve outlet faces toward the spout. Tighten the locknut (K) to secure the valve to the mounting surface.
6. Install the hot side valve, escutcheon in the same manner.
7. Connect hose connectors (M) from hot and cold side valve to the connector (E).
8. Install both side handles (N). Install them with the help of screw (O). For L1 and C1 handles place cover (P) on the top of the handle. Connect the valves to inlet supply lines. Connect the supply stops to the inlet supply lines (left is hot water supply and right is cold water supply). Make sure inlet supply lines are securely tighten. Do not overtighten. Turn on supply stops.

Faucet Installation Drawing



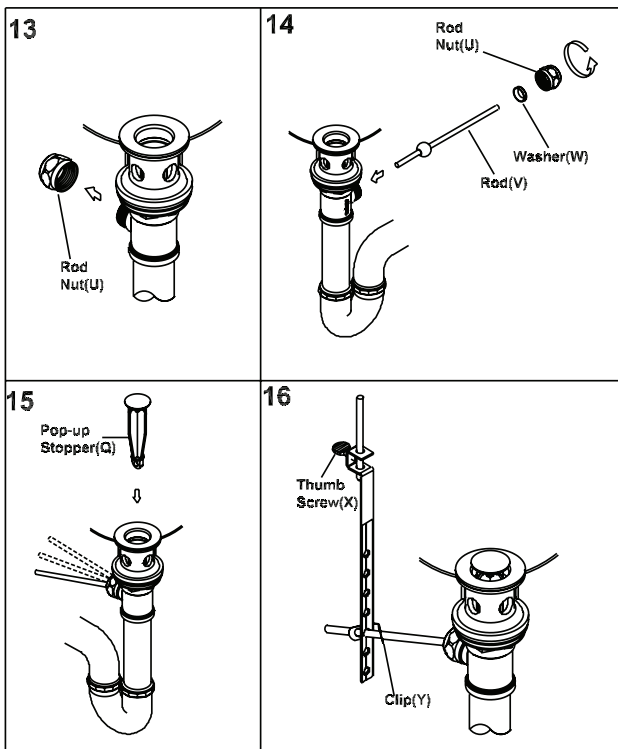
Pop-Up Drain Installation

9. Remove the pop-up stopper (Q) and pop-up flange (R) from the pop-up assembly.
10. Apply adequate amount of plumbers putty underside of pop-up flange (R). Then insert pop-up drain assembly from underside of the sink and secure the pop-up flange (R) from the top.
11. Rotate the drain body so that horizontal rod hole faces back of the faucet. Hold the pop-up assembly in place and tighten the locknut (S).
12. Remove the excess putty. Connect the trap (T). (Check manufacturer's instructions for installation).



Pop-Up Drain Installation

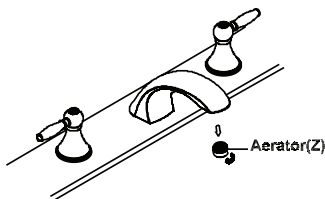
13. Remove rod nut (U).
14. Ensure the washer (W) is in place. Insert rod (V). Tighten the rod nut (U).
15. Push rod down to open drain. Insert the pop-up stopper (Q) carefully. Test if the pop-up stopper (Q) is working properly.
16. Connect pop-up bracket to the rod by using clip (Y). Tighten the thumb-screw (X) to connect pop-up bracket to pop-up lift rod.



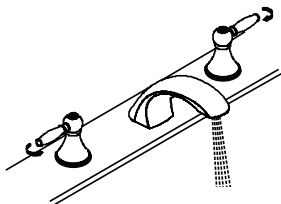
Faucet Installation

17. Remove aerator (Z).
18. Open the handles. Flush and allow water to run at full flow for at least one minute.
19. Close the handles.
20. Replace aerator (Z).

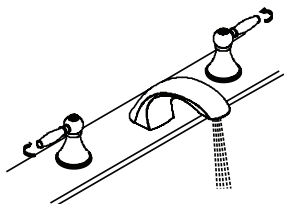
17



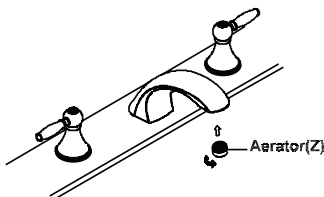
18



19



20



For more care information or trouble shooting inquiries about your Central Brass product, please see the contact information on the back page.

Central Brass

C O M P A N Y

A Division of Pioneer Industries, Inc.

6892 Snowville Road | Brecksville, Ohio 44141
Telephone: (800) 321-8630 | (216) 883-0220 | Fax: (800) 338-9414
Hours: M - F, 7:30am to 5:00pm EST
www.centralbrass.com