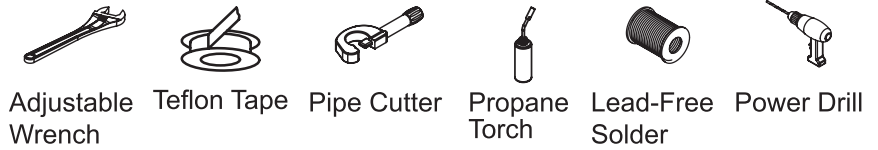


Central Brass Company, Inc.
 3325 S. Garfield Ave.
 Commerce, CA 90040
 (800) 321-8630
 www.centralbrass.com

Tools:



Model Number: 0471-RC

Warnings and Notes:

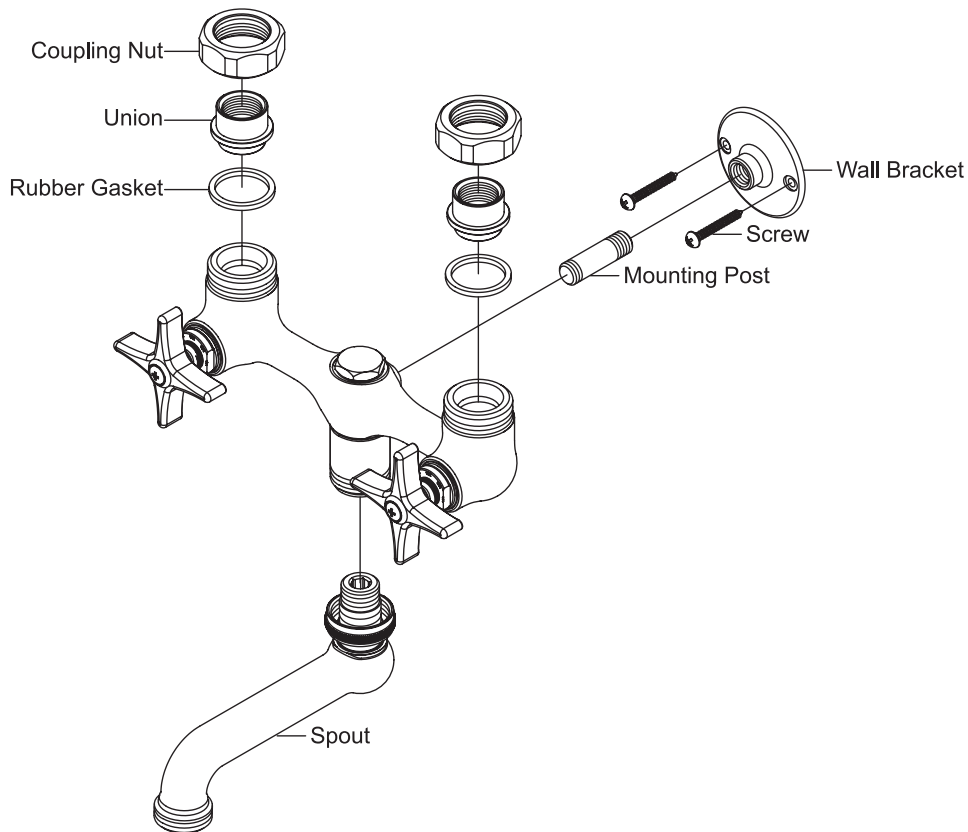
Check with local plumbing code requirements before installation.
 This product should be installed by a local listed plumber.

Do not use plumbers putty on threads.



Installation Steps:

Two Handle Laundry Faucet



- (1) Measure the proper place to mount the wall bracket then drill two 3/32" holes for wall bracket's screw holes.
- (2) **For IPS connection:** Apply Teflon tape onto the thread end of inlet pipe line, slide coupling nut onto inlet pipe line, screw and tighten the union to inlet pipe thread end. Repeat the same procedure to connect the other inlet pipe line.
For CXC connection: Slide coupling nut onto inlet pipe line, solder inlet pipe line to the union. Repeat the same procedure to connect the other inlet pipe line.
- (3) Screw the shorter thread end of mounting post into faucet body then screw wall bracket to the other end of mounting post. Carefully screw the spout straight into the faucet spout hole to avoid jamming spout O-ring, tightly screw on spout nut.
- (4) With rubber gasket under the union, tighten coupling nut of both sides to faucet inlet with the help of a wrench. Screw in the two screws to hold wall bracket secure. Apply Teflon tape onto the thread end of the plug, screw & tighten plug onto faucet with the help of a wrench.