

## Model# 0465-LE

### Two Handle Laundry Faucet

#### FEATURES & SPECIFICATIONS

- 2-3/8" Lever Handle
- 6" Tube Swivel Spout, Hose Thread
- Replaceable Seats
- 3-1/2" Centers
- Straddle Legs
- Straddle Legs
- 1/2" IP or copper Sweat Union Inlets

#### FINISHES

- RB Rough Brass

#### STANDARDS

- ASME A112.18.1
- ANSI A117.1 / ADA COMPLIANT



#### WARRANTY

- Lifetime Limited Warranty
- Lifetime Residential Warranty
- 5 Year Commercial Warranty

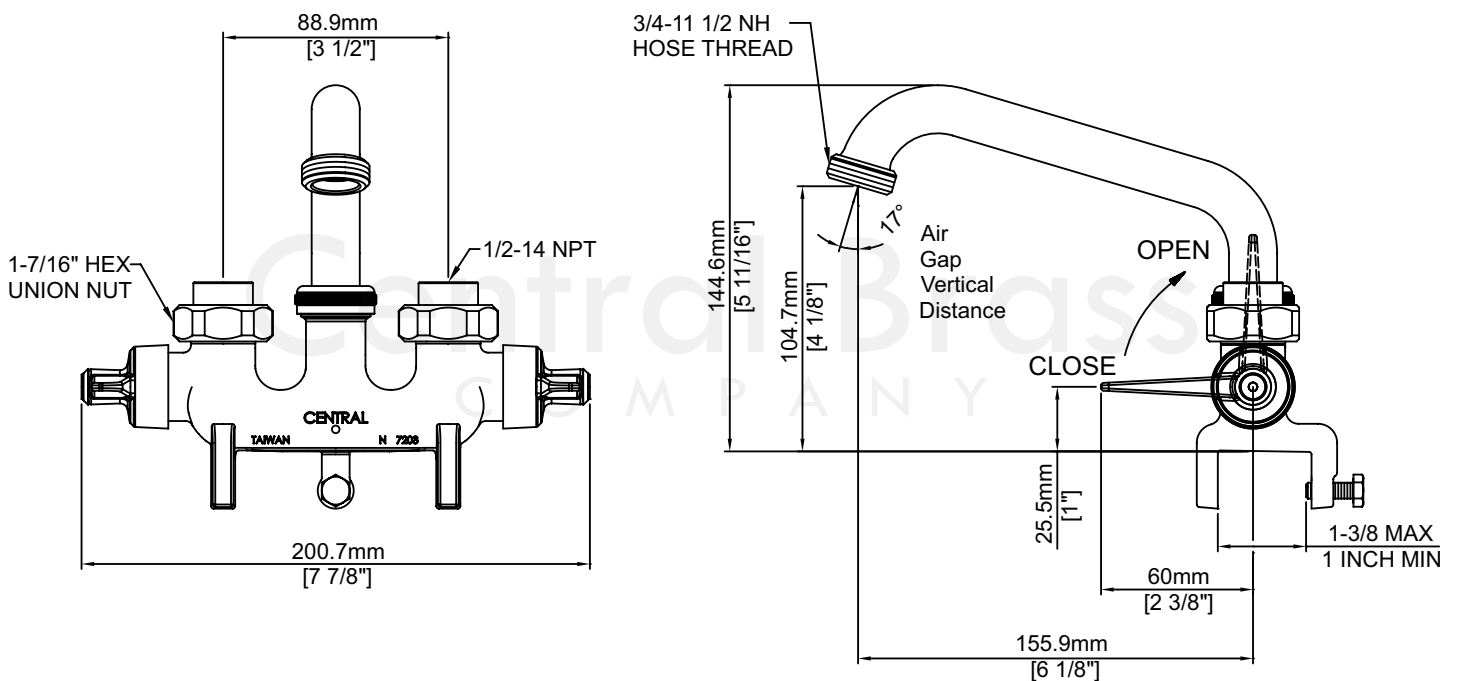
0465-LE/REV. 11 2016

Product Specifications subject to change without notice

Job Name \_\_\_\_\_ Date \_\_\_\_\_  
Model Specified \_\_\_\_\_ QTY \_\_\_\_\_  
Customer/Wholesaler \_\_\_\_\_  
Contractor \_\_\_\_\_  
Architect/Engineer \_\_\_\_\_  
Submitted as Shown \_\_\_\_\_  
Submitted w/ Variations \_\_\_\_\_

## Model# 0465-LE

### Two Handle Laundry Faucet



0465-LE/REV. 11 2016

Product Specifications subject to change without notice