

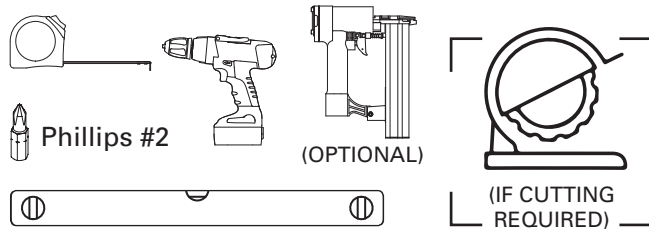
# CavitySliders™

The Pocket Door Experts

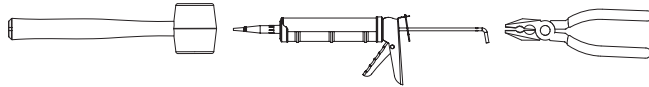
## Assembly and Installation Instructions for CS Cavity Slider™ Kitset Pocket Frame

\* Model: 3068, 3080, 4080

### Tools Required - Assembly



### Tools Required - Trim Fitting



### Parts List

	Corner Joining Bracket	x8
	Split Jamb Joining Bracket	x4
	Slat Joining Bracket	x12
	#8 x 33/64" (13mm) Self Drilling Gold Plated	x32
	#10 x 35/64" (14mm) Self Tapping Zinc Plated	x36
	1/4 Crown x 3/8 Leg" 18-Gauge Finish Staple	x32
	Foam Stop	x2
	T-Guide Base	x1
	Short T-Guide	x1
	Long T-Guide	x1
	Bi-Parting Pin	x1
	Block Clip	x12
	Trim Clip	x16

### Safety Gear Required



IF CUTTING REQUIRED

### Cut Extrusions to Length as Required



Dimensions below suit 3/4" (19mm) jamb thickness

DW = Door Width  
DH = Door Height

<b>A</b>	Track	x1	DW x 2
<b>B</b>	Back Stud	x1	DH + 2 7/8" (DH + 74mm)
<b>C</b>	Split Jamb * 3068	x2	DH + 2 11/16" (DH + 68mm)
<b>C</b>	Split Jamb * 3080/4080	x2	DH + 2 11/16" (DH + 68mm)
<b>D</b>	Bottom Plate	x1	DW - 1/8" (DW - 3mm)
<b>E</b>	Slat * 3068	x6	DW - 4" (DW - 101.5mm)
<b>E</b>	Slat * 3080/4080	x6	DW - 5 9/16" (DW - 141.5mm)
<b>F</b>	Top Fixing Block	x2	DW + 1/8" (DW + 3mm)
<b>G</b>	Bottom Fixing Block * 3068	x2	DW - 7 1/2" (DW - 190mm)
<b>G</b>	Bottom Fixing Block * 3080/4080	x2	DW - 9" (DW - 230mm)

**Assembly**

**1.**

**C** x 2  
\*3080/4080  
\*3068

x 4

#8 x 33/64" (13mm)  
Self Drilling Gold Plated  
x 8

(or staples)

(staples)

**2.**

**E** x 6

x 12

#8 x 33/64" (13mm)  
Self Drilling  
Gold Plated  
x 24

(or staples)

(staples)

**3.**

**A**

Notched  
end

#10 x 35/64"  
(14mm)  
Self Tapping  
Zinc Plated  
x 2

**B**

**4.**

**B**

**D**

#10 x 35/64"  
(14mm)  
Self Tapping  
Zinc Plated  
x 2

**5.**

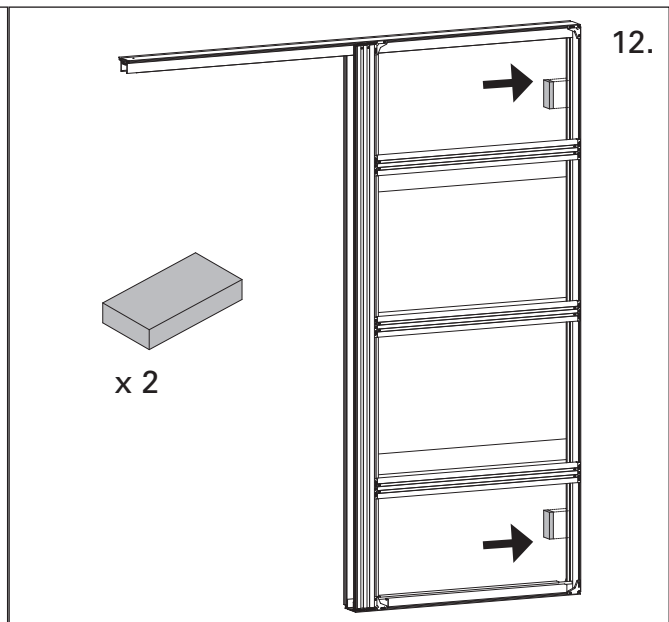
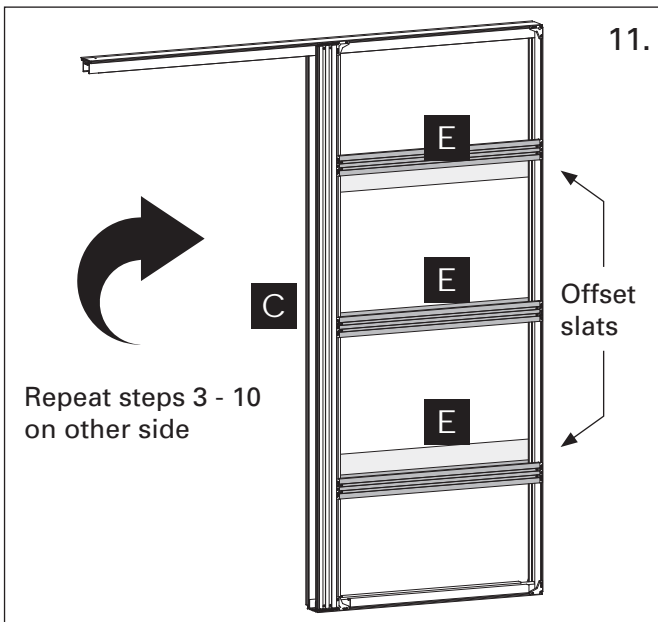
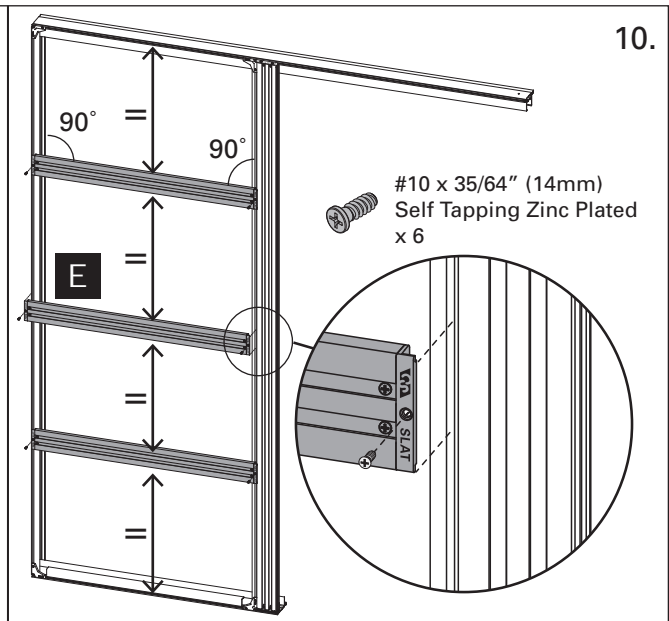
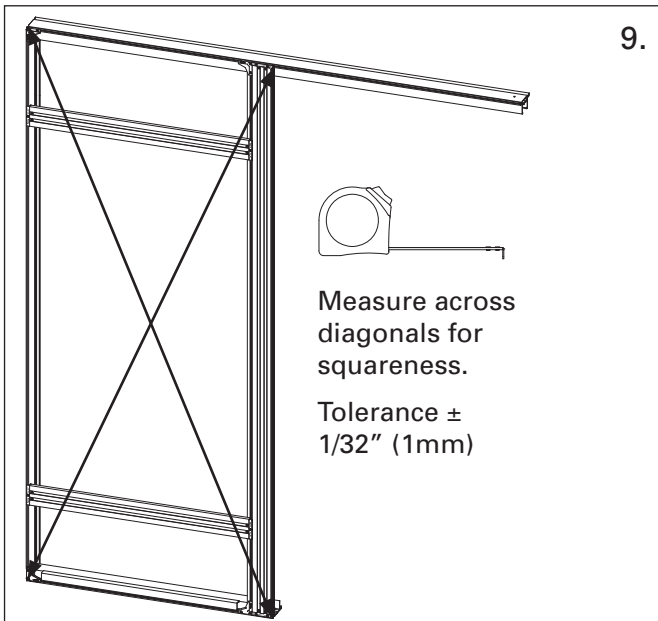
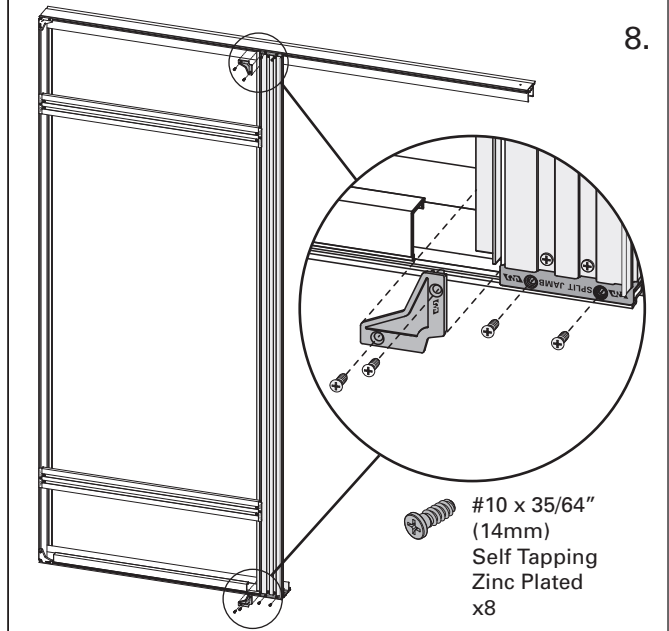
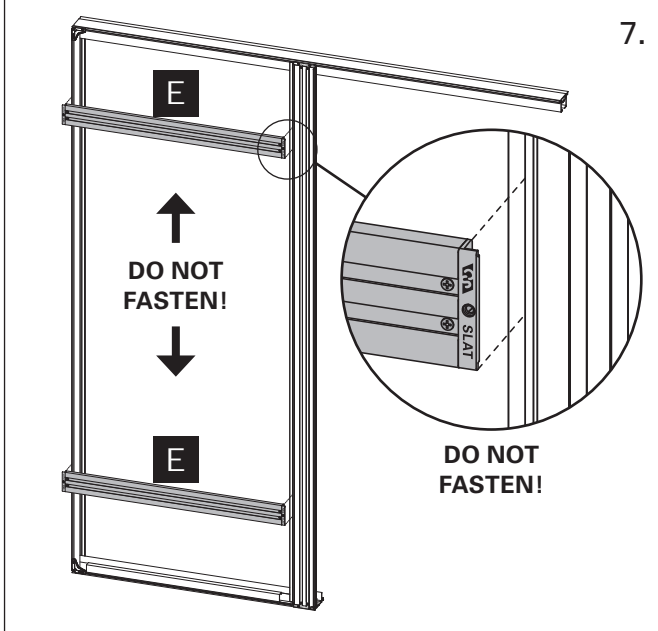
**G**

**6.**

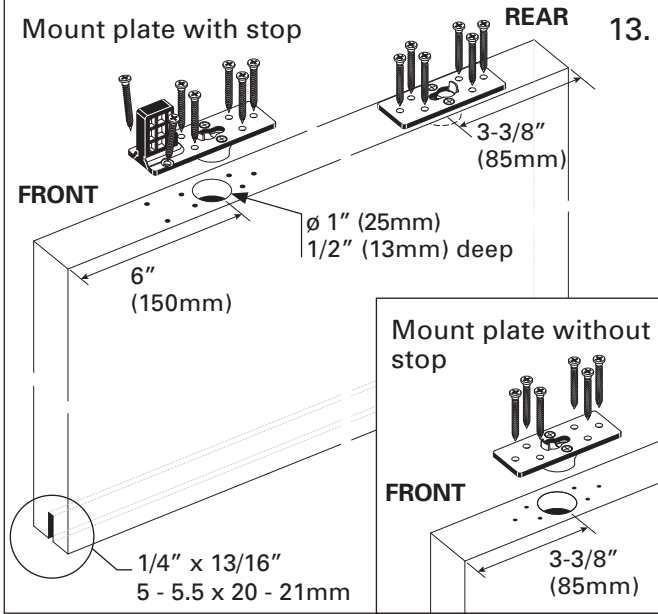
**C**

**DO NOT FASTEN!**

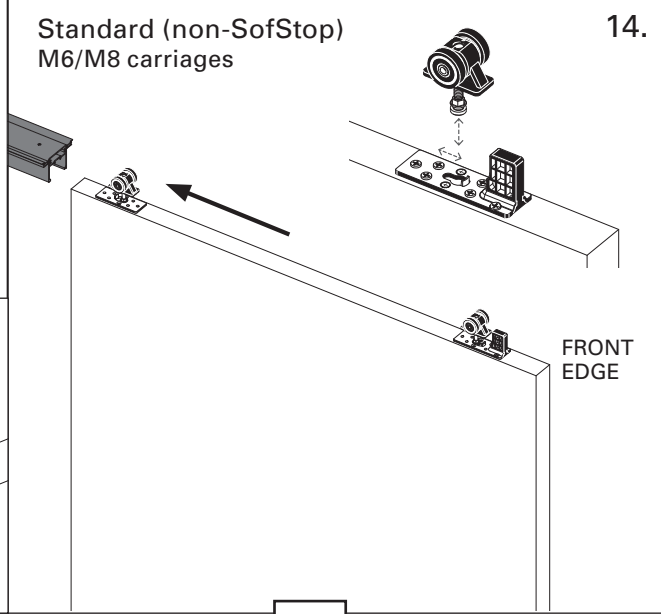
**Assembly**



**Assembly**

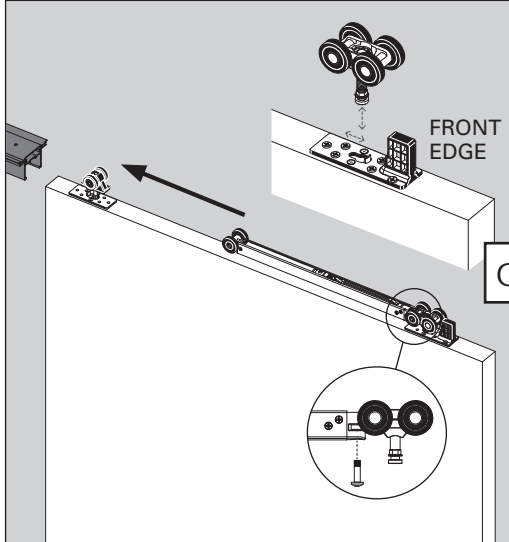


14. Standard (non-SofStop)  
M6/M8 carriages

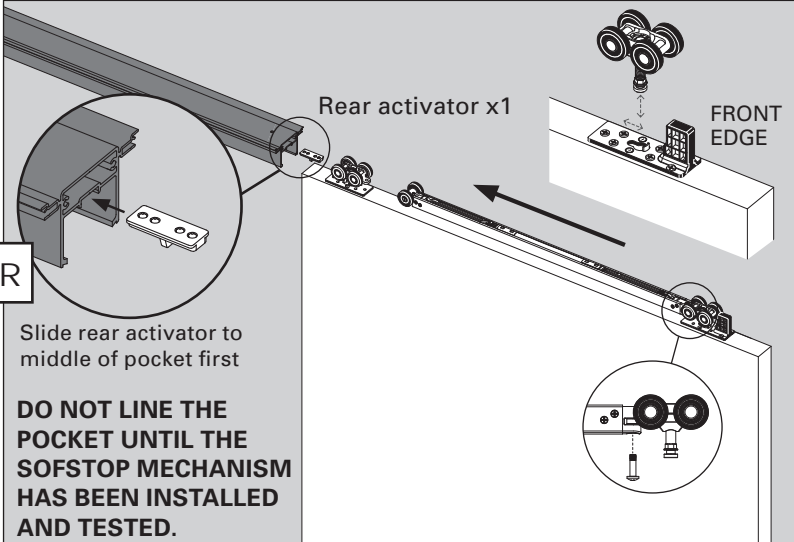


OR

SofStop® Single Soft Close 14.



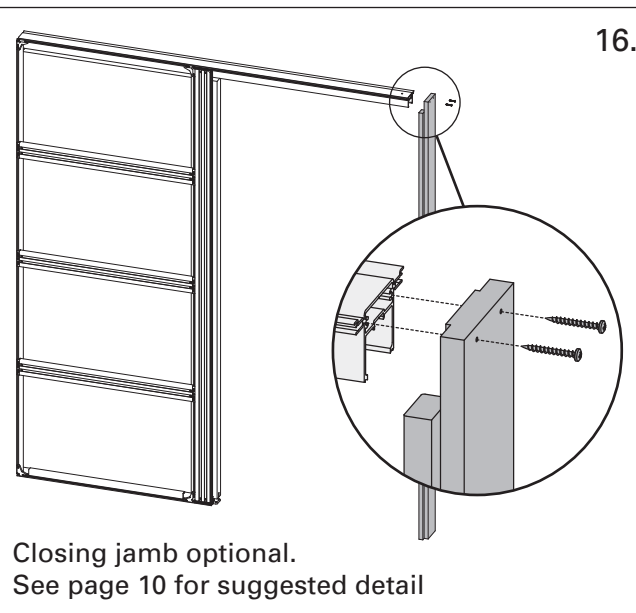
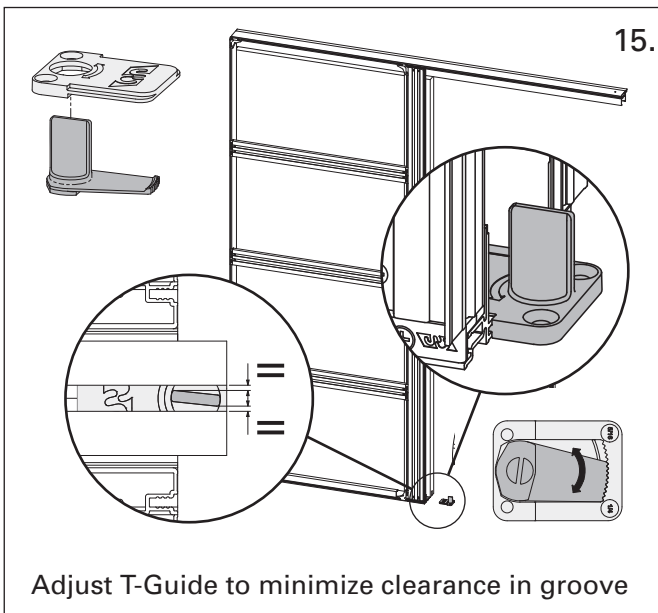
SofStop® Twin Soft Open & Close ONLY 14.



OR

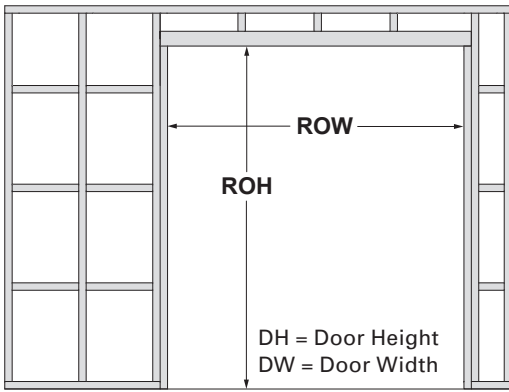
Slide rear activator to middle of pocket first

**DO NOT LINE THE POCKET UNTIL THE SOFSTOP MECHANISM HAS BEEN INSTALLED AND TESTED.**



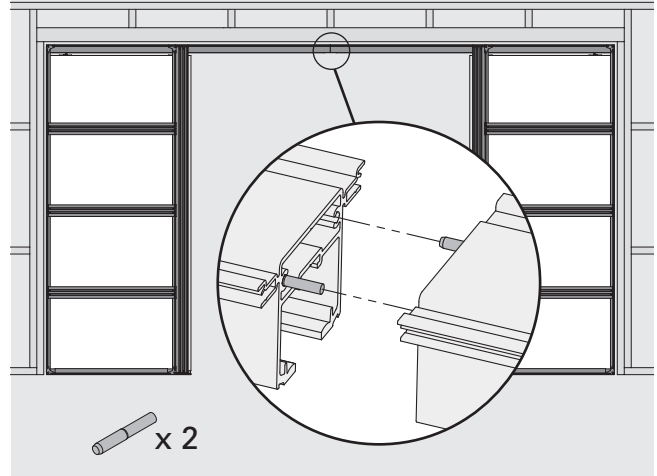


# Installation



Dimension	inches	mm
RO height (ROH)	DH + 4 1/4"	DH + 108
RO width - Single	(DW x 2) + 2"	(DWx2) + 51
RO width - Bi-Parting	(DW x 4) + 2"	(DWx4) + 51

## Bi-Parting units only



1.

←  
**Plumb & straight.**  
Use a level!

Plumb split jambs

2.

←  
**Fix top first**

←  
Packing

←  
**Fix bottom second**

Keep plumb and pack where required.  
Fix back stud and track with #8 countersunk screws (not supplied)

3.

Parallel

Adjustment

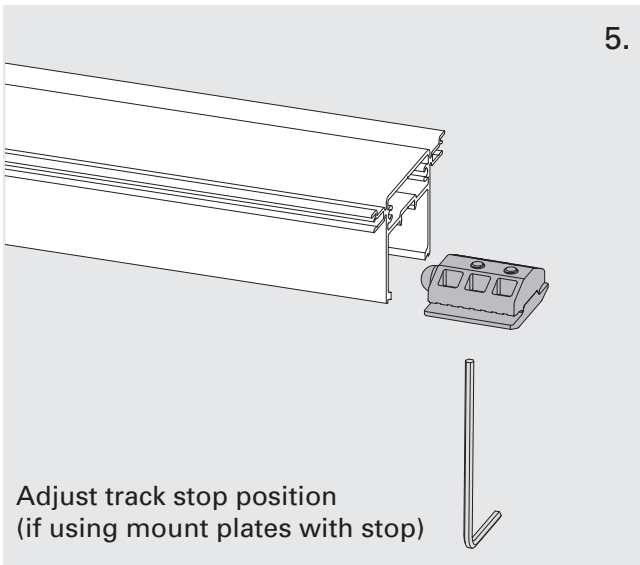
Door

Check that door slides parallel and straight.  
Adjust if necessary.

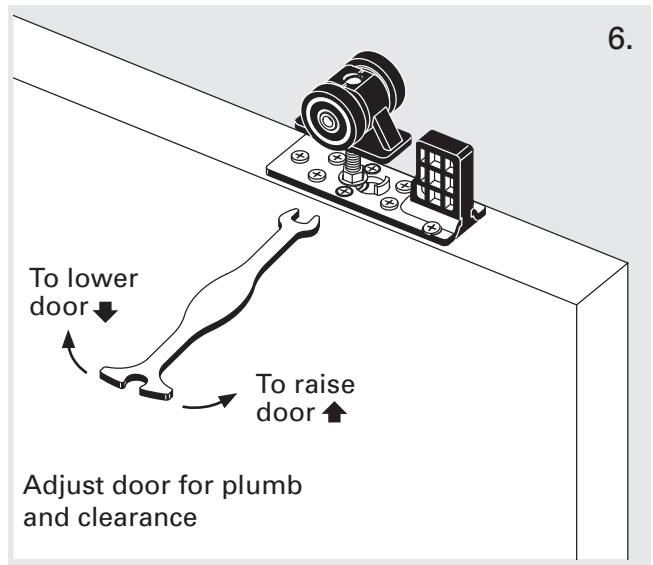
4.

#10 screws (not supplied)

Securely fix T-Guide then bottom plate to floor



Adjust track stop position  
(if using mount plates with stop)

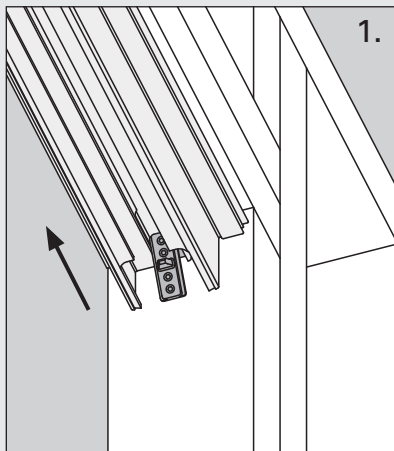


Adjust door for plumb  
and clearance

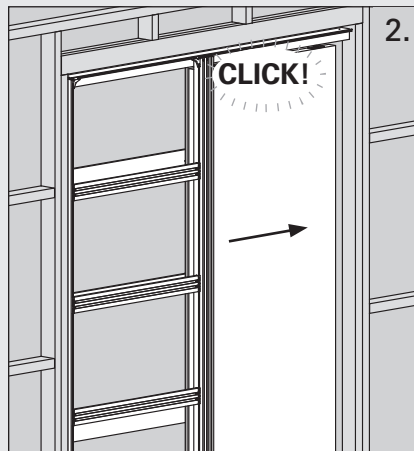
## SofStop® Single & Twin

*Note: Single Soft Close requires one front activator only.  
Twin Soft Open & Close requires two activators. One should already be in the track above the pocket (Page 4).*

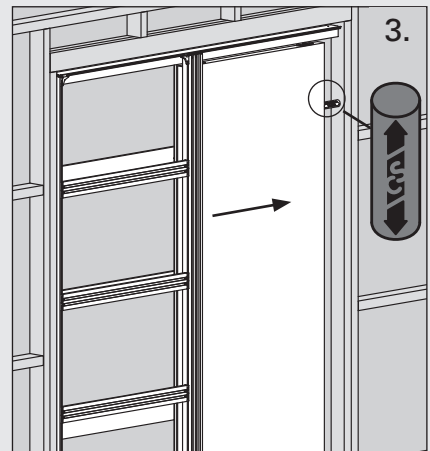
### Set front activator position.



Slide activator to centre of door opening and **tighten one grub screw**.

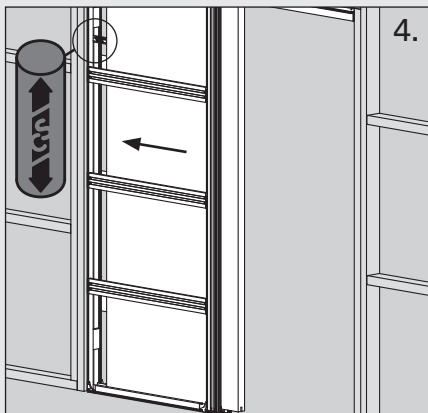


Gently **close door** until activator clicks. The cassette is now charged.  
**Open door & loosen activator grub screw.**



Hold red activator setting block on closing jamb/finished wall & gently close door. Activator will slide to correct position.  
Securely tighten grub screws.

## SofStop® Twin ONLY



### Set rear activator position.

Close the door and move the rear activator into the approximate centre of the pocket.

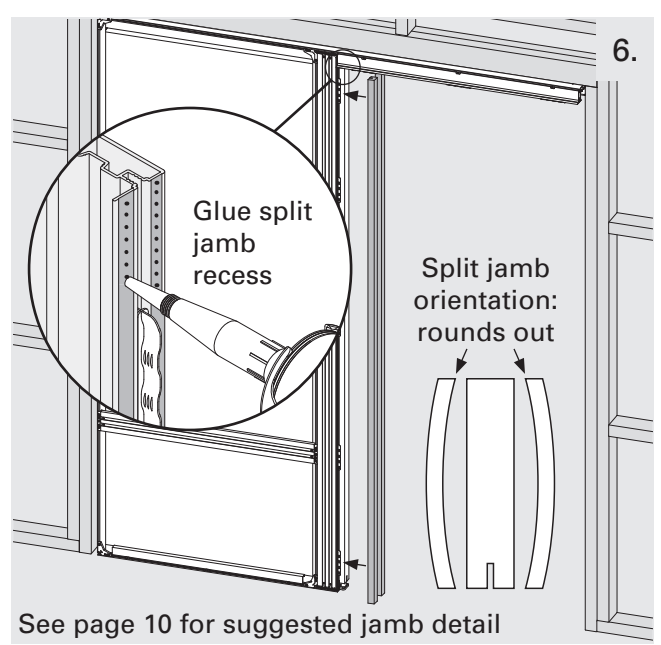
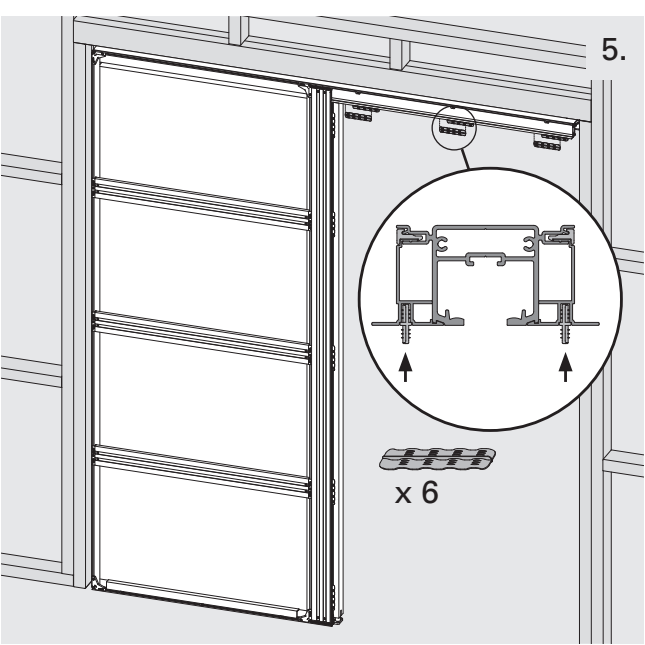
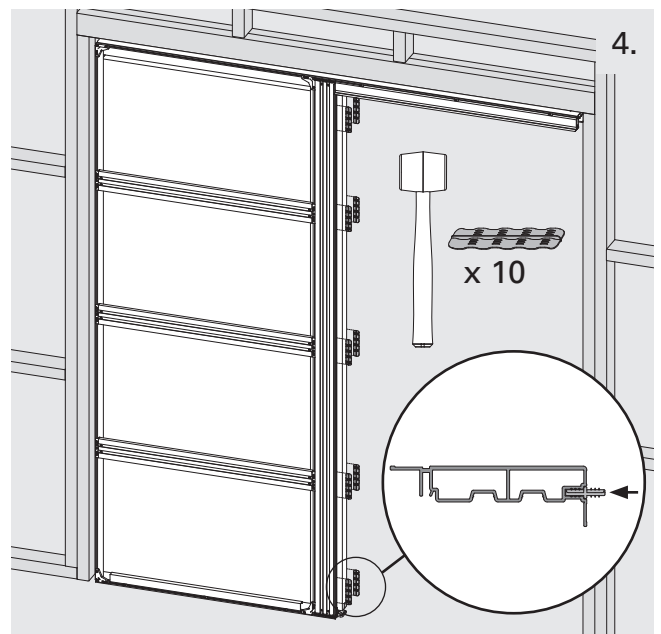
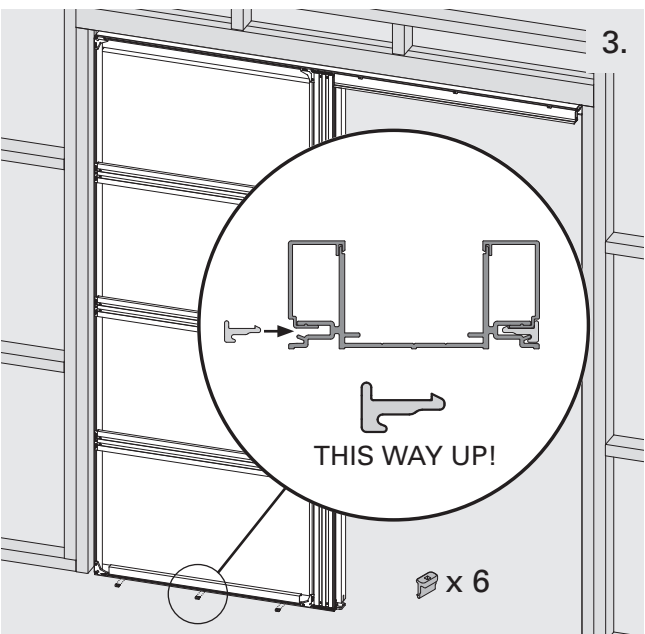
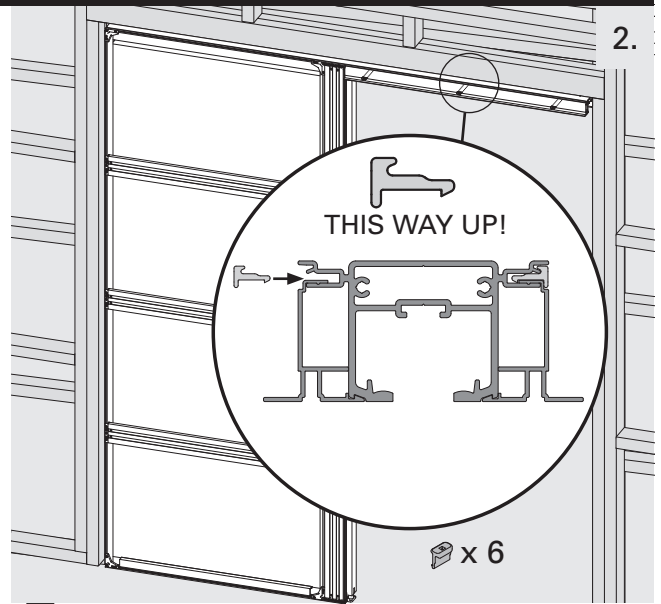
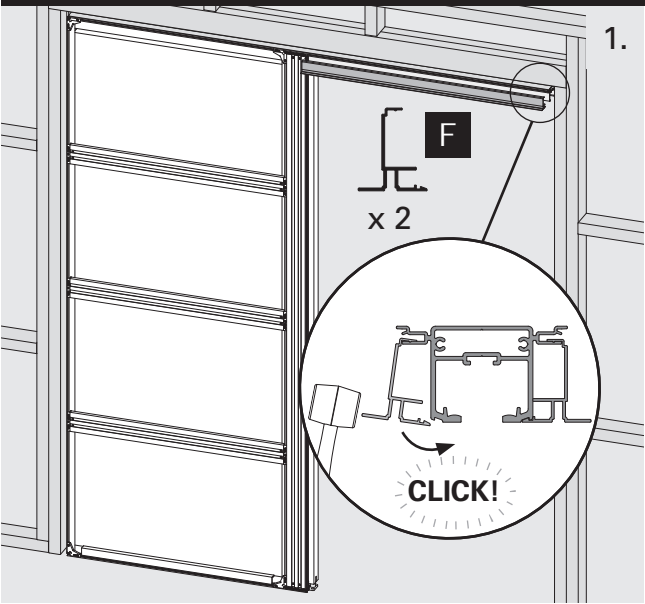
**Do not tighten grub screws.**

Position the activator setting block inside the back stud and gently open the door onto it.

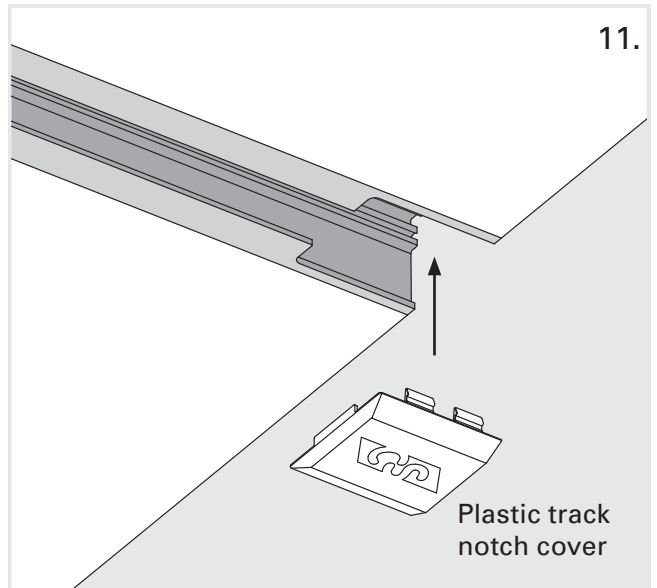
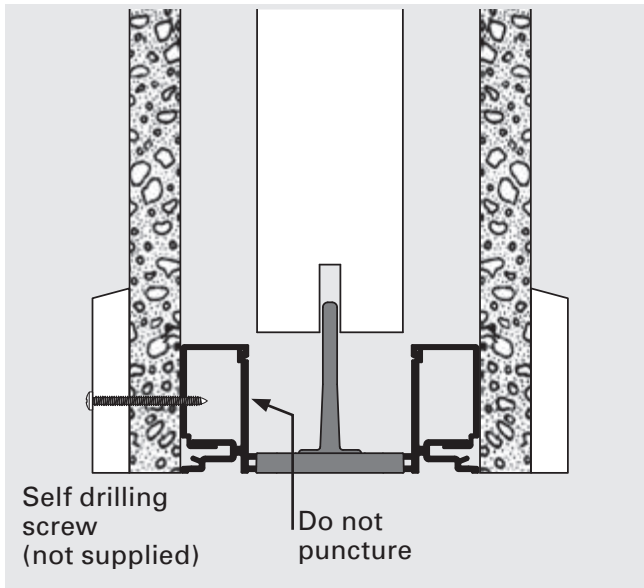
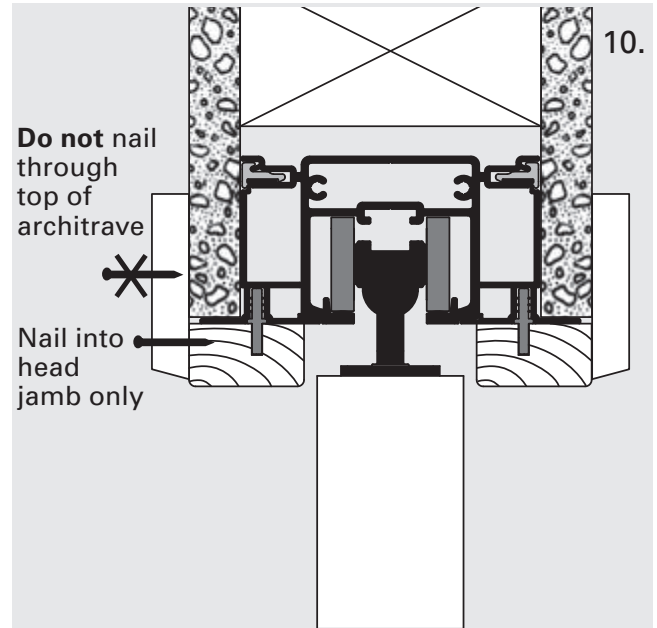
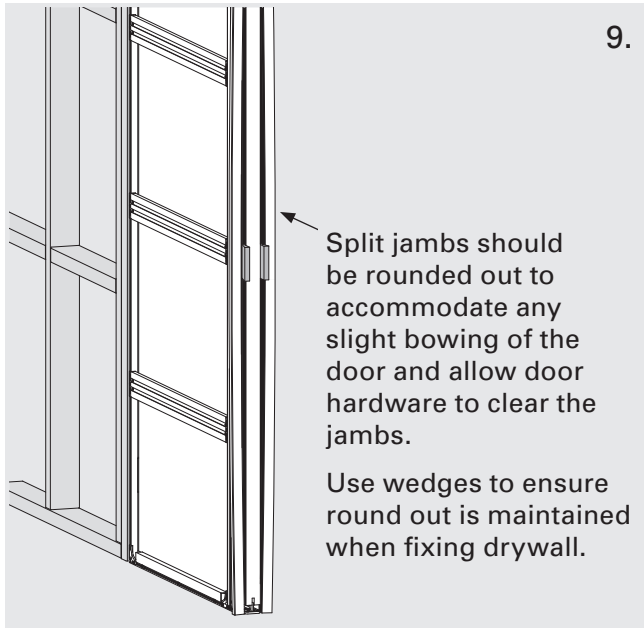
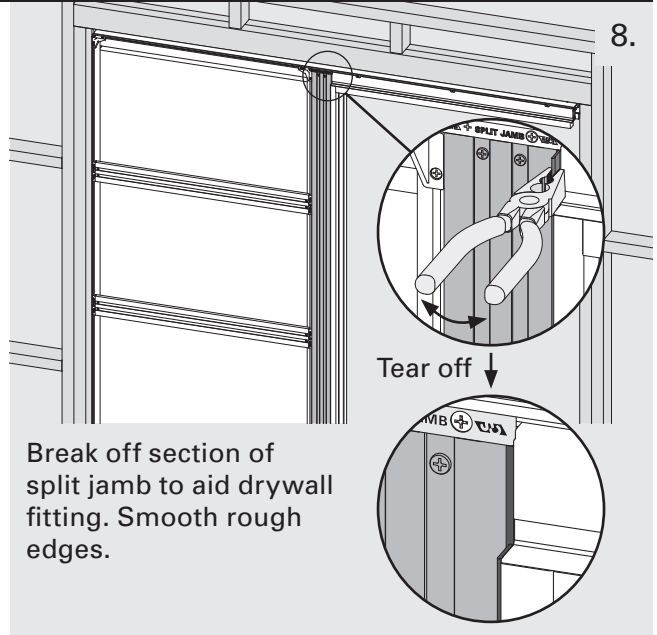
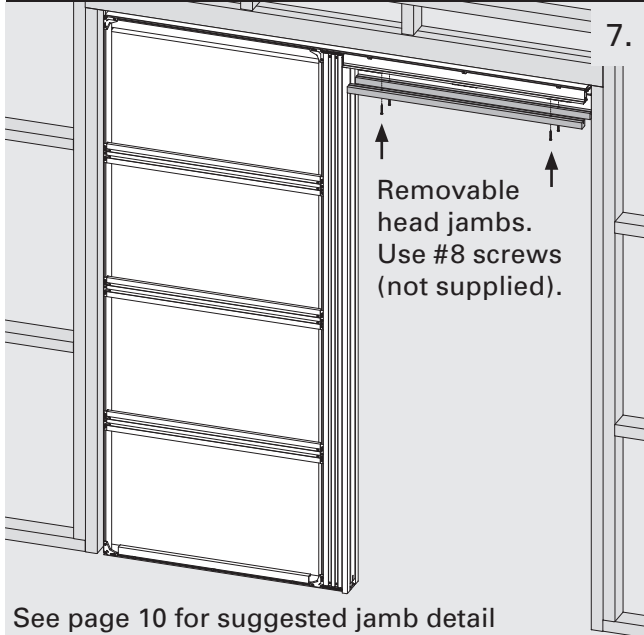
The activator will slide along the track into the correct position.

The rear activator is now positioned. Securely tighten all four grub screws.

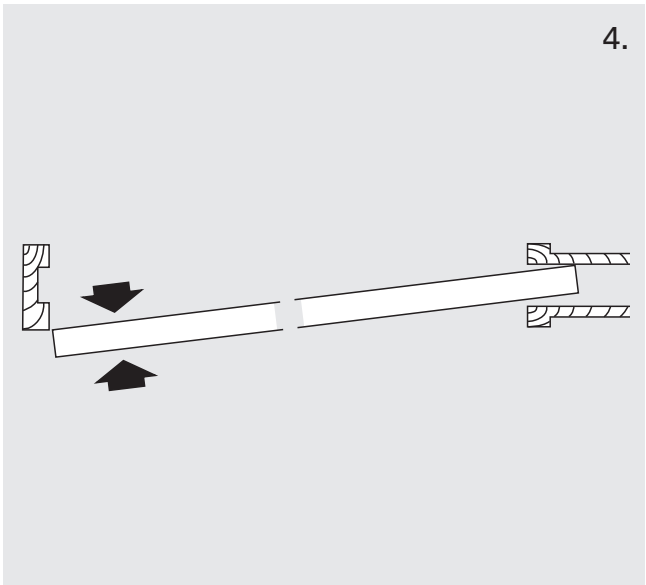
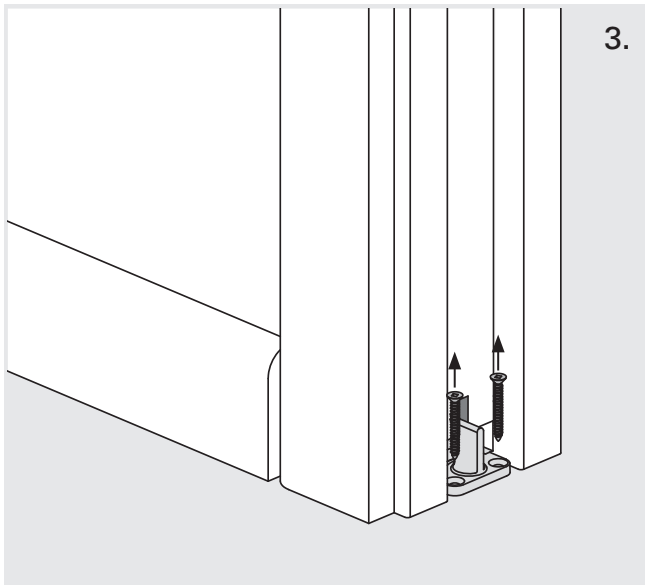
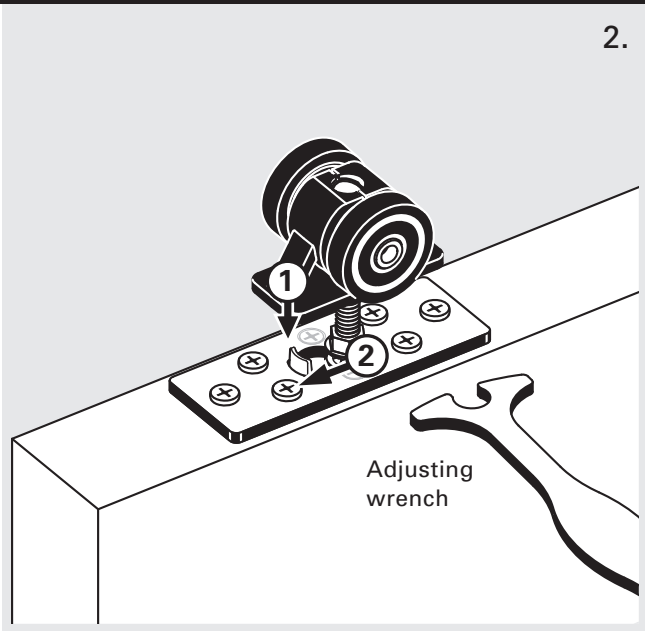
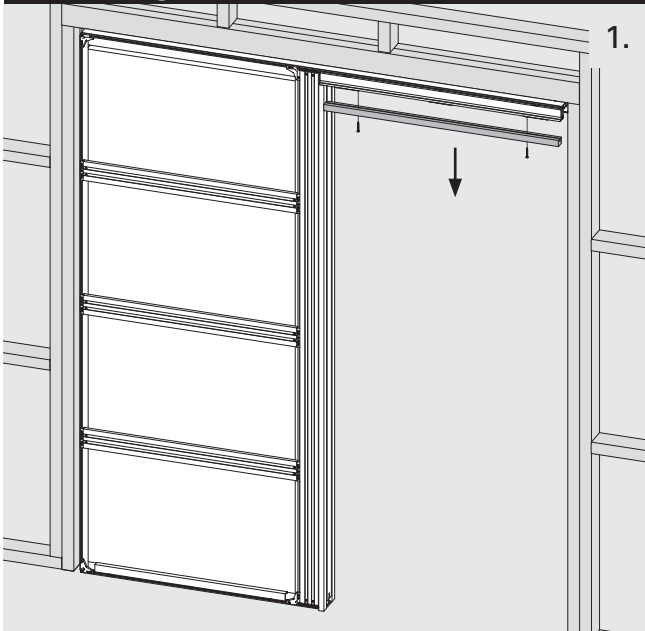
Trim



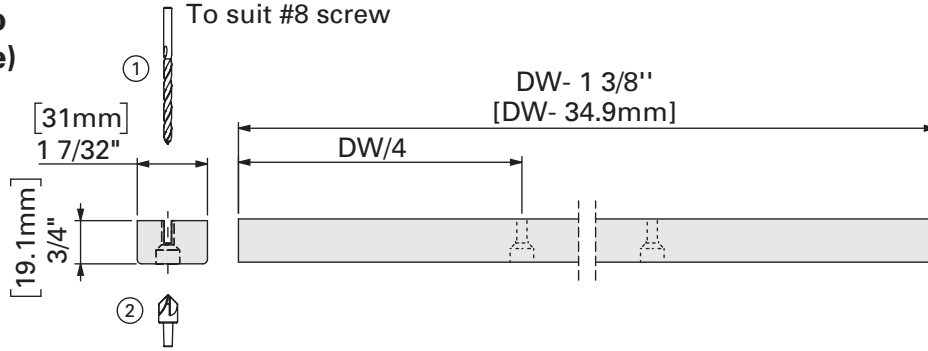
Trim/Finishing



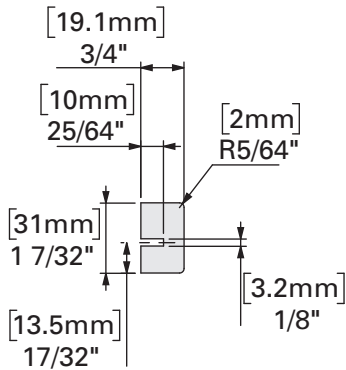
# Removing Door



### Head Jamb (removable)



### Split Jambs



### Closing Jamb

