



LED Low Profile Flushmount

QUESTIONS OR CONCERNS CONTACT CANARM AT:
 1-800-265-1833 (English) / 1-800-567-2513 (French)
 Monday through Friday 8:00 AM to 5:00 PM E.S.T.

LED-SM7DL



INSTRUCTIONS PERTAINING TO RISK OF FIRE OR INJURY TO PERSONS
READ ALL INSTRUCTIONS

IMPORTANT SAFETY INSTRUCTIONS

SAVE THESE INSTRUCTIONS

TOOLS AND MATERIALS REQUIRED:

Phillips Screwdriver

Wire Cutters

Pliers

Wrench

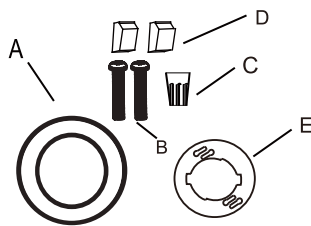
Wiring supplies as required by the Canadian Electrical Code and/or the Quebec Electrical code

SAFETY PRECAUTIONS:

- 1. TURN OFF ELECTRICAL POWER BEFORE STARTING INSTALLATION OF LIGHT FIXTURE.**
- 2. THIS PRODUCT MUST BE INSTALLED IN ACCORDANCE WITH THE APPLICABLE INSTALLATION CODE BY A PERSON FAMILIAR WITH THE CONSTRUCTION AND OPERATION OF THE PRODUCT AND THE HAZARDS INVOLVED.**
- 3. CAUTION RISK OF FIRE . CONSULT A QUALIFIED ELECTRICIAN TO ENSURE CORRECT BRANCH CIRCUIT CONDUCTOR.**

PACKAGE CONTENTS

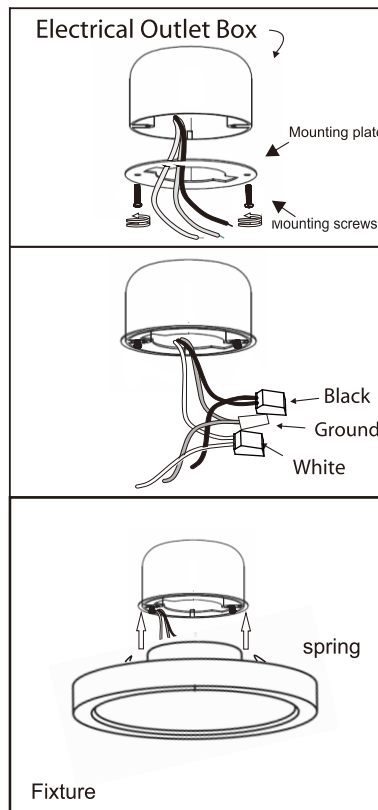
PART	DESCRIPTION	QTY
A	LED Low Profile Flushmount	1
B	Mounting screws	2
C	Wire nut	1
D	Quick connector	2
E	Mounting plate	1



FLUSH MOUNT

This LED light is suitable to be dimmed by LEVITON # 6672.

Max # of Lamps per 600W Dimmer: 5pcs



- 1.** Prior to installation, install mounting plate into the electrical outlet box with mounting screws. Drive screws completely to the end of the junction box.
- 2.** Connect supply wires to wires on fixture with wire nuts or push wires into Quick Connector. Connect white to white, black to black, and copper wire to copper wire as grounding connection.
- 3.** Completing the installation by pushing the fixture into the mounting plate

MADE IN CHINA