

QUESTIONS OR CONCERNS CONTACT CANARM AT:  
1-800-265-1833 (English) • 1-800-567-2513 (French)  
Monday through Friday 8:00 AM to 5:00 PM E.S.T.

INSTRUCTIONS PERTAINING TO RISK OF FIRE OR INJURY TO PERSONS  
READ ALL INSTRUCTIONS

## IMPORTANT SAFETY INSTRUCTIONS

SAVE THESE INSTRUCTIONS

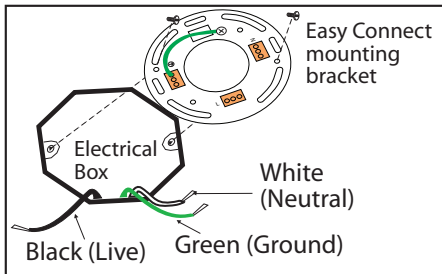
### SAFETY PRECAUTIONS:

1. TURN OFF ELECTRICAL POWER BEFORE STARTING INSTALLATION OF LIGHT FIXTURE.
2. THIS PRODUCT MUST BE INSTALLED IN ACCORDANCE WITH THE APPLICABLE INSTALLATION CODE BY A PERSON FAMILIAR WITH THE CONSTRUCTION AND OPERATION OF THE PRODUCT AND THE HAZARDS INVOLVED.

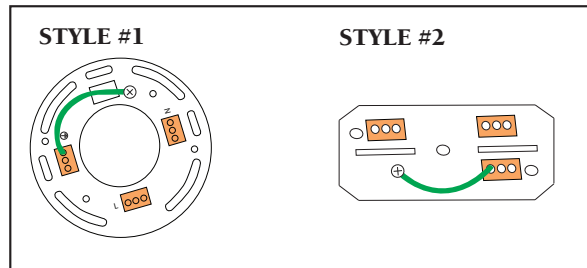
**NOTE: Product May Not Look Exactly As Shown In Figures.**

### INSTALL EASY CONNECT MOUNTING BRACKET:

#### STEP 1

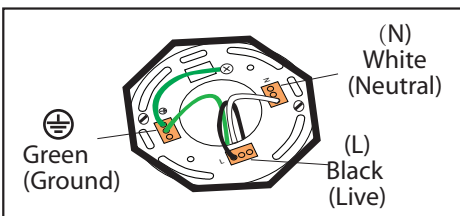


Attach easy connect mounting bracket to electrical box with electrical box screws (not included).



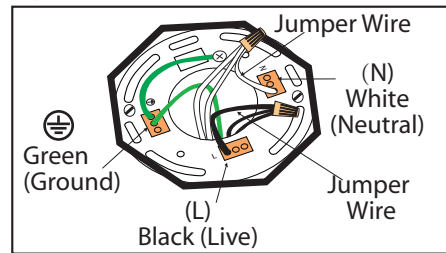
### CONNECT HOUSE WIRES

#### STEP 2 - Option 1



Connect (push) electrical wires from electric box (house wiring) into correct inserts. Black (Live), White (Neutral), Green (Ground)

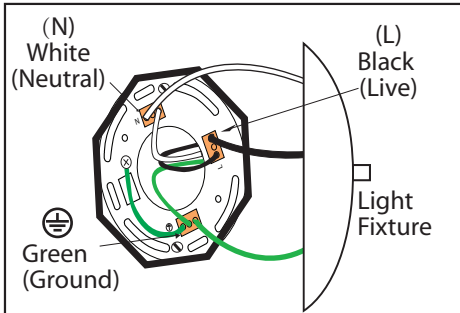
#### Option 2 - MULTIPLE ELECTRICAL BOX WIRES



For multiple black (live) & white (neutral) wires joined in the electrical box (house wiring), attach a single "black" and "white" Jumper Wire before connecting. Strip 7mm from a 6" Jumper Wires (AWG 12-24) supplied. Then connect (push) wires into correct inserts.

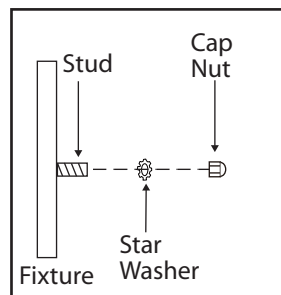
### CONNECT LIGHT FIXTURE

#### STEP 3



Connect (push) electrical wires from fixture into correct inserts. Black (live), White (neutral), Green (ground)

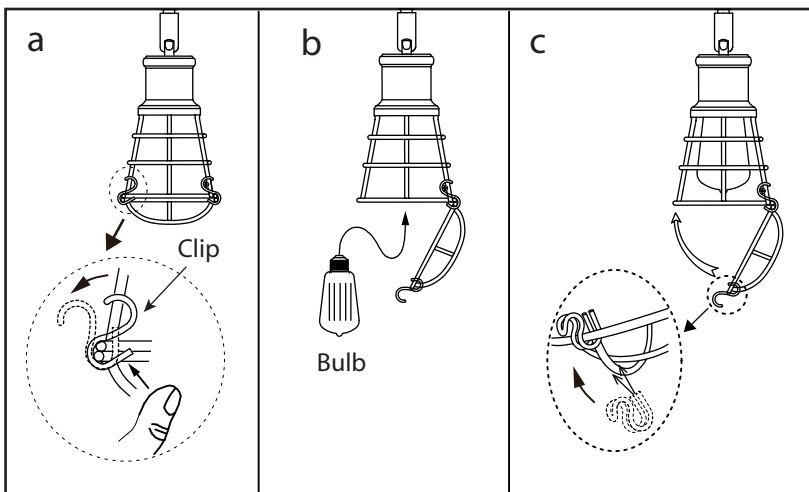
#### STEP 4



Tuck electrical wires into electrical box and position fixture over studs on mounting bracket assembly. Secure fixture in place with star washer(s) and cap nut(s).

**Note:** If required, assemble body and spread the arms of the fixture out evenly.

#### STEP 5



- Slightly push the clip from inside.
- Install specified bulb type and wattage.
- Reattach the clip as shown.