



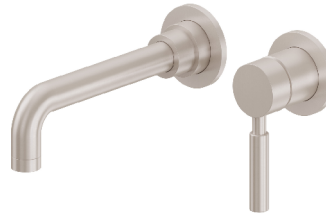
California Faucets®

Avalon™

Single Handle Lavatory Wall Faucet Trim Only

Features

- Available in 28 finishes including 13 PVD finishes
- All brass construction
- Single handle allows for volume & temperature control at any position
- 1.2gpm (4.5 L/min) max flow rate
- Rough valve (SHV-R) sold separately



TO-V6201-7-SN shown

TO-V6201-7
TO-V6201-9
TO-V6201-7-SST
TO-V6201-9-SST

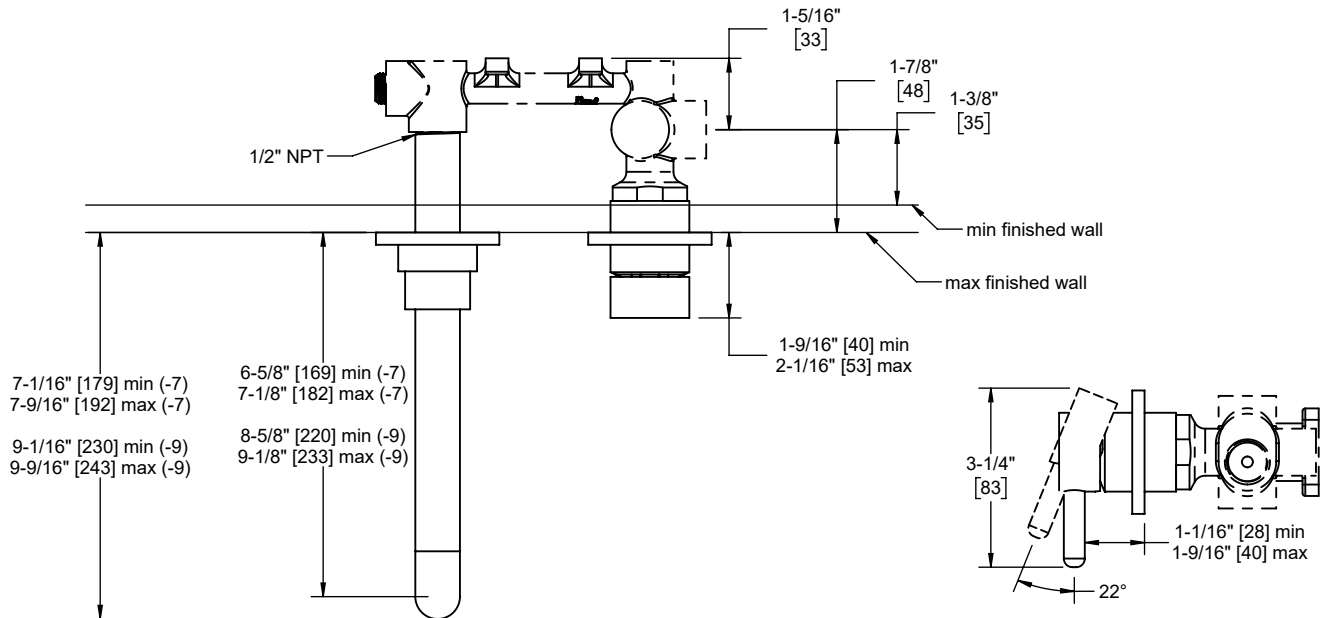
Codes/Standards Applicable

Product meets or exceeds the following:

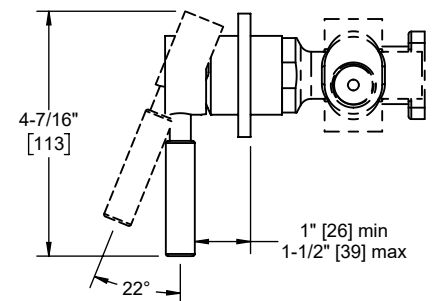
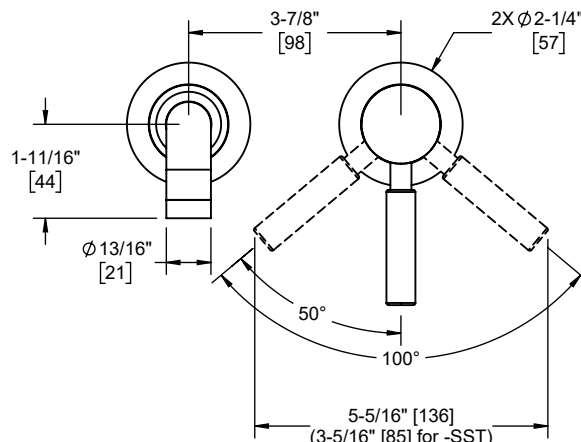
- ASME A112.18.1/CSA B125.1
- NSF 61, NSF 372, CEC & DOE
- EPA WaterSense
- Commonwealth of MA
- ADA compliant



TO-V6201-7-SST-SN shown



TO-V6201-X-SST



Through-Hole Specifications

	Min	Recommended	Max
Spout: Ø1"	Ø1-1/4"	Ø1-3/8"	
	[25]	[32]	[35]
Handle: Ø1-5/8"	Ø1-3/4"	Ø2"	
	[41]	[44]	[51]

Specifications subject to change without notice

Dimensions are inches, rounded to 1/16"
 [Dimensions in brackets are mm, rounded to 1mm]