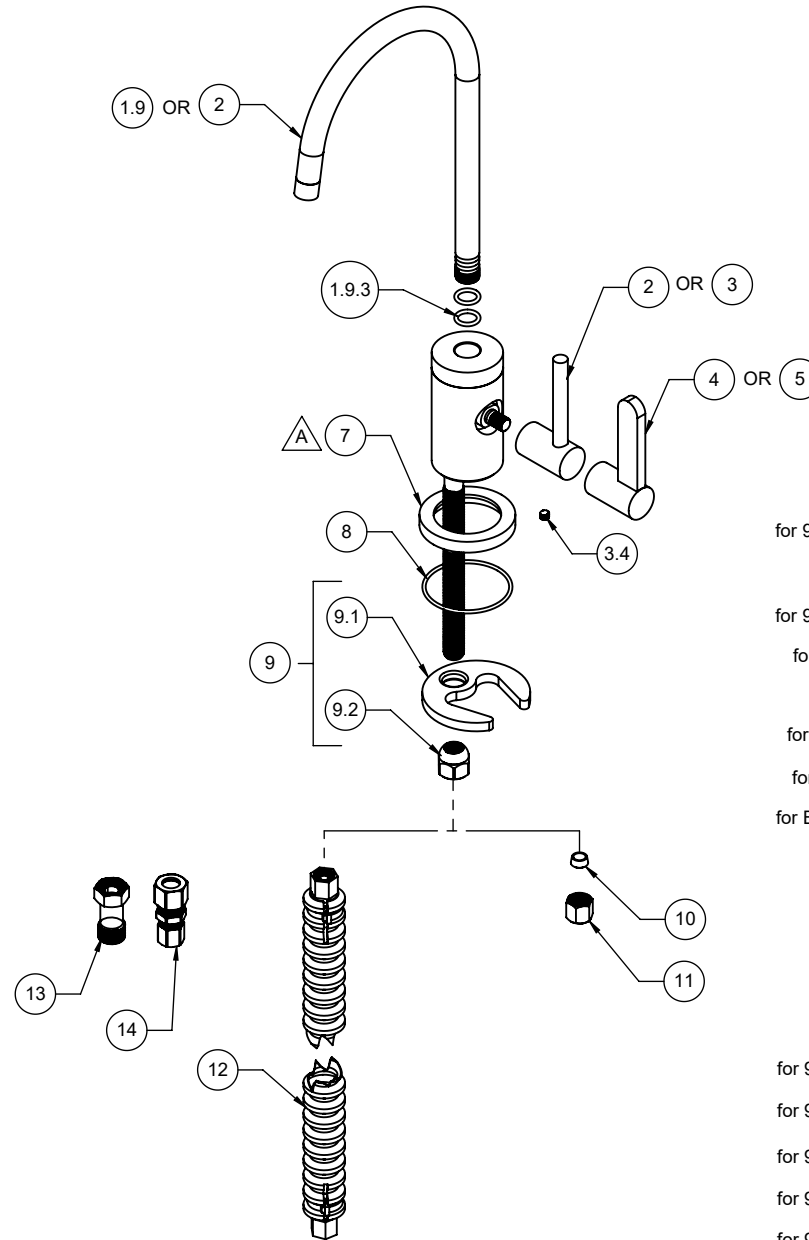


△ REQUIRES ITEM ⑧

9620-K50-ST 9625-K50-ST
9620-K50-BST 9625-K50-BST
9620-K50-RB 9625-K50-RB
9620-K50-BRB 9625-K50-BRB



To order spare parts add and/or replace as stated below:

SPD- prefix added to part number(s)
-ZZ replaced with finish code (see finish table)
-WW replaced with **-90** (light finish) or **-96** (dark finish)

Ex: **SPD-7-100463-PC** or **SPD-86030-96**

ITEM	PART NO	DESCRIPTION	QTY.
for 9620 Series	1.9	5-100122-ZZ ASM, CONT/TRANS WATER DISP SPOUT <i>(incl. 1.9.3)</i>	1
	1.9.3	87170-80 O-RING Ø10.00 X 2.00 (NA) EPDM A70 (NSF-61-12 & WRAS)	2
for 9625 Series	2	5-100299-ZZ ASM, CONT SPOUT HOT/COLD ONLY DISP - G2 <i>(incl. 1.9.3)</i>	1
for ST Series	3	5-100125-ZZ ASM, ALIGNING WATER DISP CONT LVR - STK <i>(incl. 3.4)</i>	1
	3.4	86047-WW SETSCREW 10-24 X 3/16 SCKT HD CONE PT SS	1
for BST Series	4	5-100125B-ZZ ASM, ALIGNING WATER DISP CONT LVR - MBLK STK <i>(incl. 3.4)</i>	1
for RB Series	5	5-100286-ZZ ASM, WATER DISP CONT - ROUND BLADE <i>(incl. 3.4)</i>	1
for BRB Series	6	5-100286B-ZZ ASM, WATER DISP CONT - MBLK ROUND BLADE <i>(incl. 3.4)</i>	1
	7	50600-ZZ RING, CONT WATER DISP BASE	1
	8	87093-80 O-RING Ø44.17 X 1.78 (-031) BUNA-N A70	1
	9	6-200246 KIT, KITCHEN/H2O DISP MNT HDW <i>(incl. 9.1, 9.2)</i>	1
	9.1	880309-98 MOUNTING BRACKET, SINGLE HOLE CRESCENT	1
	9.2	10552-98 NUT, HEX W/ DOME 7/16-24	1
for 9620 Series	10	962586-99 1/4" CMP SLEEVE - PLASTIC	1
for 9620 Series	11	962587-99 COMP NUT, 1/4" (THD 7/16-24)	1
for 9625 Series	12	6-200307 HOSE, HOT WATER, CORRUGATED	1
for 9625 Series	13	6-200281.05 ASM, 3/8" COMP (9/16"-24 MALE X FEMALE) FLOW RESTRICTOR - 0.5 GPM	1
for 9625 Series	14	880331-98 FITTING, 3/8" CMP X 1/4" CMP STRAIGHT (NSF-61)	2
for ITEM 3.4	15	882043-99 KEY, ALLEN, 3/32", BLACK	1