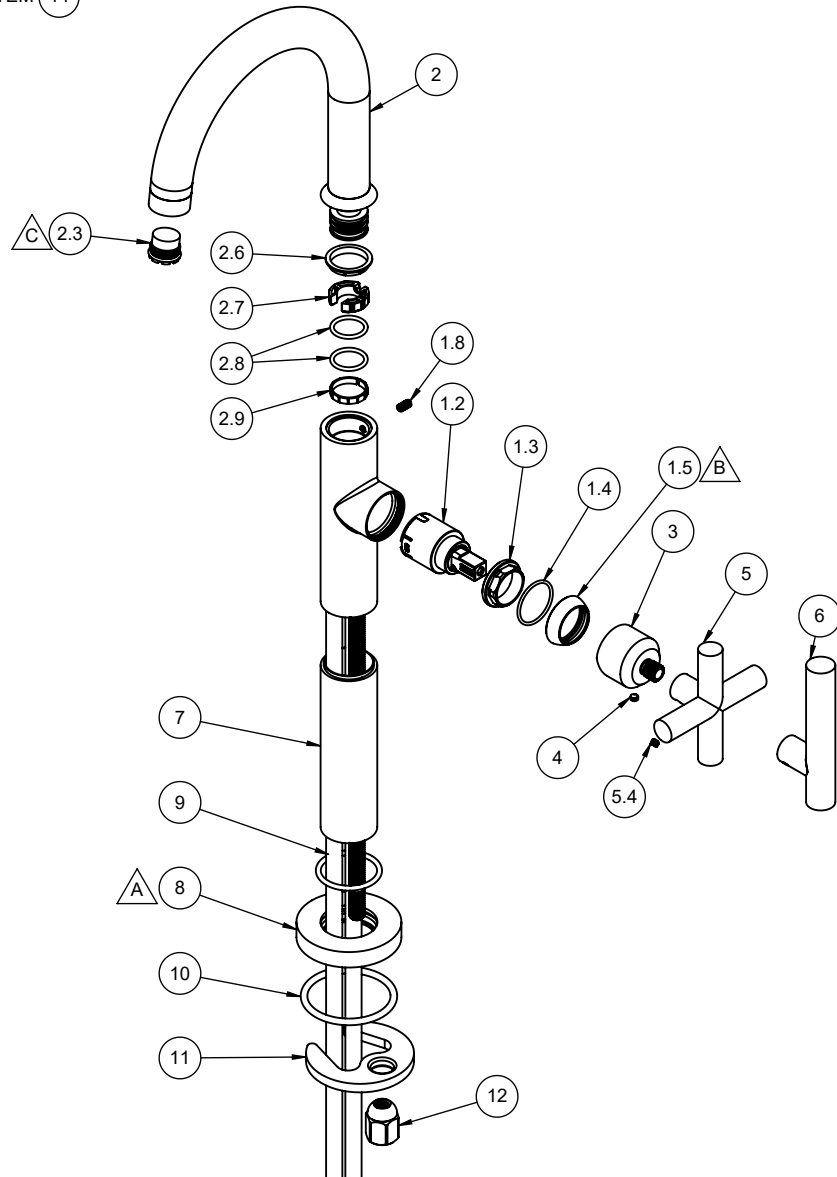


6509-2 6509-1
6609-2 6609-1

- △ REQUIRES ITEM 9 AND 10
- △ REQUIRES ITEM 1.4
- △ REQUIRES ITEM 14



To order spare parts add and/or replace as stated below:

SPD- prefix added to part number(s)
-ZZ replaced with finish code (see finish table)
-WW replaced with **-90** (light finish) or **-96** (dark finish)

Ex: **SPD-7-100463-PC** or **SPD-86030-96**

ITEM	PART NO.	DESCRIPTION	QTY
1.2	880102-99	CART 25MM, SNGL LVR	1
1.3	10555-98	NUT, 25MM CART KIT PACKING	1
1.4	87145-80	O-RING Ø23.00 X 1.50 (NA) BUNA-N A70	1
1.5	10556-ZZ	BONNET, TRANS KIT	1
1.8	86032-WW	SETSCREW 8-32 X 5/16 SCKT HD CUP PT SS	1
2	7-100543-ZZ	ASM, Ø22MM SHBF SPOUT. CONT. (incl. 2.3, 2.6, 2.7, 2.8, 2.9)	1
2.3	880356-81	INSERT, 1.2 GPM, TT LAMINAR (CACHE)	1
2.6	10558-81	BUSHING, KIT SPT ADPTR	1
2.7	11235-81	BUSHING, SHBF SPT ADAPTER	1
2.8	87019-80	O-RING Ø16.00 X 2.00 (NA) EPDM (NSF 61-18)	2
2.9	11301-81	FRICTION RING, SHBF, NSF 61	1
3	11189-ZZ	HDL HUB, SHBF	1
4	86170-90	SETSCREW 8-32 X 1/8" SCKT CONE PT SS	1
for 65 Series	5	7-653143-ZZ KIT, CTEMP CROSS HDL, 65 SERIES (incl. 5.4)	1
	5.4	86030-WW SETSCREW 8-32 X 1/8 SCKT HD CUP PT SS	2
for 66 Series	6	7-663144-ZZ KIT, CTEMP LEV HDL, 66 SERIES (incl. 5.4)	1
for all -2	7	11190-ZZ BODY EXTENSION, 30MM X 107MM, SHBF	1
8	10509-ZZ	BASE RING, KIT CONT SLIM	1
9	87147-80	O-RING Ø29.82 X 2.62 (-123) BUNA-N A70	1
10	87139-80	O-RING Ø44.04 X 3.53 (-224) BUNA-N A70	1
11	880309-98	MOUNTING BRACKET, SINGLE HOLE CRESCENT	1
12	10184-98	NUT, HEX W/ DOME	1
14	223472-99	KEY, TT CACHE AERATOR INSERT	1
18	882042-99	KEY, ALLEN, 5/64", BLACK	1

for ITEM 1.8, 4, & 5.4