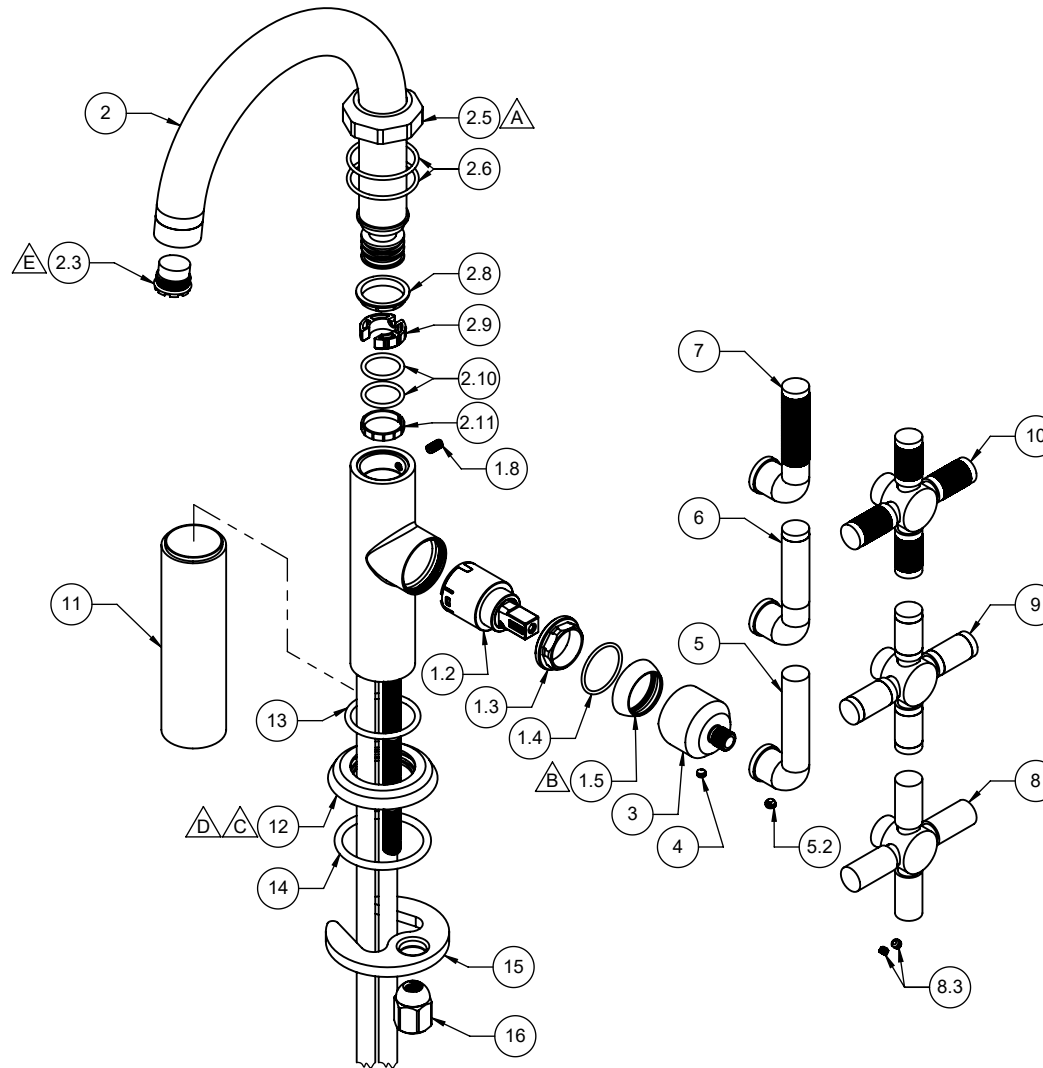


- △ REQUIRES ITEM (2.6)
- △ REQUIRES ITEM (1.4)
- △ REQUIRES ITEM (13)
- △ REQUIRES ITEM (14)
- △ REQUIRES ITEM (18)

3109-2	3109-1
3109F-2	3109F-1
3109K-2	3109K-1
3109X-2	3109X-1
3109XF-2	3109XF-1
3109XK-2	3109XK-1



3109-2 **3109-1**
3109F-2 **3109F-1**
3109K-2 **3109K-1**
3109X-2 **3109X-1**
3109XF-2 **3109XF-1**
3109XK-2 **3109XK-1**

To order spare parts add and/or replace as stated below:

SPD- prefix added to part number(s)
-ZZ replaced with finish code (see finish table)
-WW replaced with **-90** (light finish) or **-96** (dark finish)

Ex: **SPD-7-100278-PC** or **SPD-86030-96**

	ITEM	PART NO.	DESCRIPTION	QTY.
for 31X series	8	7-100291-ZZ	ASM, INDUSTRIAL X-HDL SMOOTH <i>(incl. 8.3)</i>	1
	8.3	86030-WW	SETSCREW 8-32 X 1/8 SCKT HD CUP PT SS	2
for 31XF series	9	7-100292-ZZ	ASM, INDUSTRIAL X-HDL CARBON FIBER <i>(incl. 8.3)</i>	1
for 31XK series	10	7-100293-ZZ	ASM, INDUSTRIAL X-HDL KNURLED <i>(incl. 8.3)</i>	1
for all -2	11	11190-ZZ	BODY EXTENSION, 30MM X 107MM, SHBF	1
	12	11221-ZZ	INDUSTRIAL BASE, SHBF	1
	13	87147-80	O-RING Ø29.82 X 2.62 (-123) BUNA-N A70	1
	14	87133-80	O-RING Ø37.69 X 3.53(-222) BUNA-N A70	1
	15	880309-98	MOUNTING BRACKET, SINGLE HOLE CRESCENT	1
	16	10184-98	NUT, HEX W/ DOME	1
	18	223472-99	KEY, TT CACHE AERATOR INSERT	1
for ITEM 5.2	19	882043-99	KEY, ALLEN, 3/32", BLACK	1
for ITEM 1.8, 4, & 8.3	20	882042-99	KEY, ALLEN, 5/64", BLACK	1

ITEM	PART NO.	DESCRIPTION	QTY.	
1.2	880102-99	CART 25MM, SNGL LVR	1	
1.3	10555-98	NUT, 25MM CART KIT PACKING	1	
1.4	87145-80	O-RING Ø23.00 X 1.50 (NA) BUNA-N A70	1	
1.5	10556-ZZ	BONNET, TRANS KIT	1	
1.8	86032-WW	SETSCREW 8-32 X 5/16 SCKT HD CUP PT SS	1	
2	7-100544-ZZ	ASM, Ø22MM SHBF SPOUT, INDUSTRIAL <i>(incl. 2.3, 2.5, 2.6, 2.8, 2.9, 2.10, 2.11)</i>	1	
2.3	880356-81	INSERT, 1.2 GPM, TT LAMINAR (CACHE)	1	
2.5	11222-ZZ	INDUSTRIAL TRIM RING, SHBF	1	
2.6	87196-80	O-RING Ø29.87 X 1.78 (-025) BUNA-N A70	2	
2.8	10558-81	BUSHING, KIT SPT ADPTR	1	
2.9	11235-81	BUSHING, SHBF SPT ADAPTER	1	
2.10	87019-80	O-RING Ø16.00 X 2.00 (NA) EPDM (NSF 61-18)	2	
2.11	11301-81	FRICITION RING, SHBF, NSF 61	1	
3	11189-ZZ	HDL HUB, SHBF	1	
4	86170-90	SETSCREW 8-32 X 1/8" SCKT CONE PT SS	1	
for 31 series	5	7-100296-ZZ	ASM, HANDLE, SMOOTH DISPENSER <i>(incl. 5.2)</i>	1
	5.2	86235-WW	SETSCREW 10-24 X 1/8 SCKT HD CUP PT SS	1
for 31F series	6	7-100276-ZZ	ASM, HANDLE, CARBON FIBER DISPENSER <i>(incl. 5.2)</i>	1
for 31K series	7	7-100275-ZZ	ASM, HANDLE, KNURLED DISPENSER <i>(incl. 5.2)</i>	1