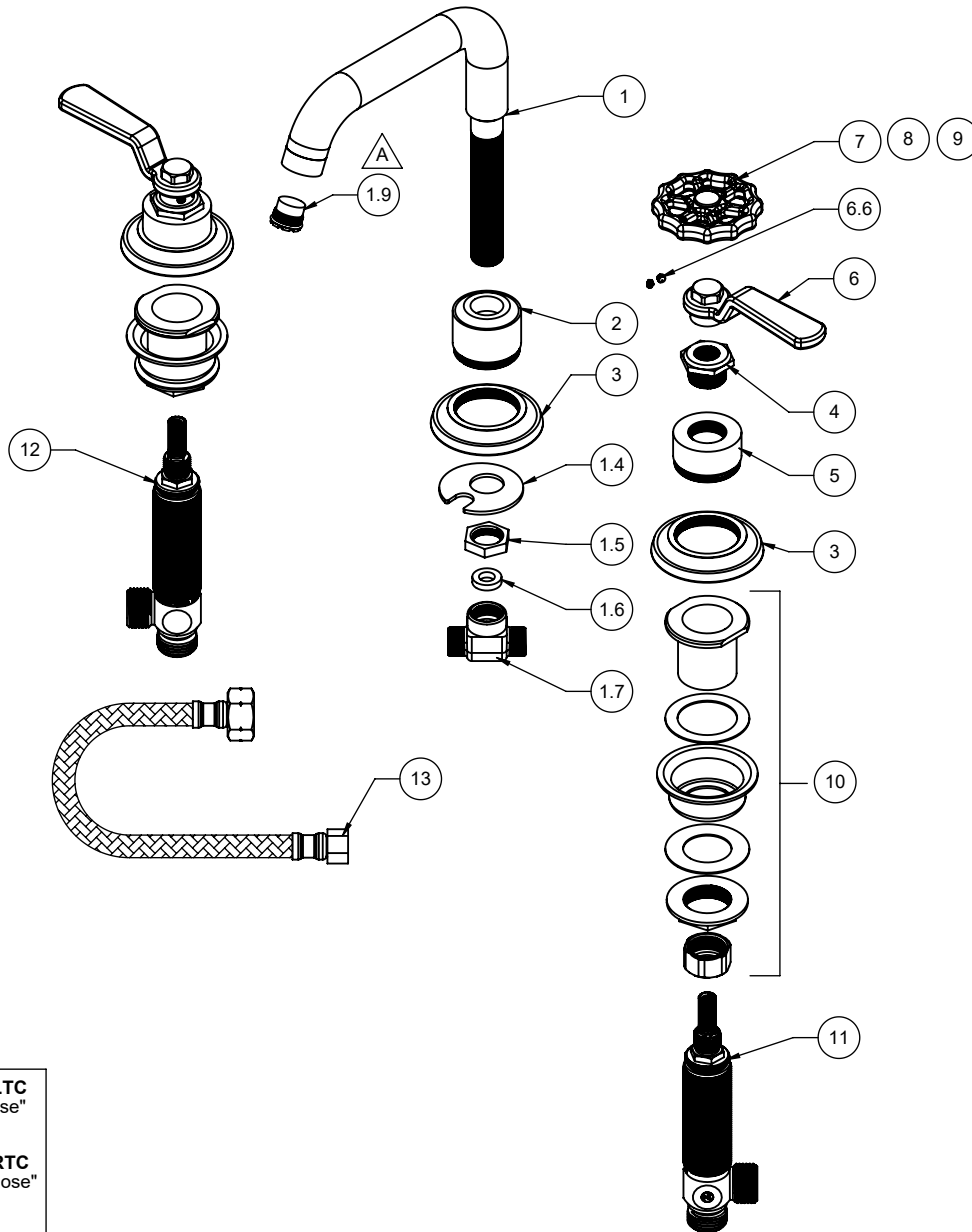


8002
8002W
8002WB
8002WR

△ REQUIRES ITEM 15



To order spare parts add and/or replace as stated below:

SPD- prefix added to part number(s)
-ZZ replaced with finish code (see finish table)
-WW replaced with **-90** (light finish) or **-96** (dark finish)

Ex: **SPD-7-100463-PC** or **SPD-86030-96**

ITEM	PART NO	DESCRIPTION	QTY.
1	7-100278-ZZ	ASM, LAV SPOUT, INDUSTRIAL, SMOOTH <i>(incl. 1.4, 1.5, 1.6, 1.7, 1.9)</i>	1
1.4	881766-99	WSHR HORSESHOE	1
1.5	881276-99	NUT, HEX 3/8"-18 NPSM X .20 HT	1
1.6	87162-80	WSHR Ø8.5 X Ø15.5 X 3.5MM EPDM A70 (NSF-61-12 & WRAS)	1
1.7	880083-90	TEE, 3-WAY LAV - SS	1
1.9	880356-81	INSERT, 1.2 GPM, TT LAMINAR (CACHE)	1
2	10749-ZZ	BASE, LAV SPT, W/THRU-HOLE	1
3	10363-ZZ	RING, BASE, TRAD	3
4	10760-ZZ	NUT, SCALLOPED ESCUTCHEON	2
5	10751-ZZ	ESCUTCHEON, SCALLOPED	2
for 80 Series	6	7-100536-ZZ ASM, BALL LEVER HDL <i>(incl. 6.6)</i>	2
	6.6	86170-WW SETScrew 8-32 X 1/8" SCKT CONE PT SS	2
for 80W Series	7	7-100465-ZZ ASM, SPOKED WHEEL <i>(incl. 6.6)</i>	2
for 80WB Series	8	7-100465B-ZZ ASM, SPOKED WHEEL - BLACK <i>(incl. 6.6)</i>	2
for 80WR Series	9	7-100465R-ZZ ASM, SPOKED WHEEL - RED <i>(incl. 6.6)</i>	2
	10	6-200294 KIT, W/S INV NUT - 2 SETS (1 SET - 6-200294-1)	2
	11	6-200087 ASM, COLD-LAV "NL" BODY & CART (.25 Pb)-G4 <i>(incl. CART-WS-LTC)</i>	1
	12	6-200088 ASM, HOT-LAV "NL" BODY, CART (.25 Pb)-G4 <i>(incl. CART-WS-RTC)</i>	1
	13	880099-99 HOSE, POLY BRAIDED, 1/2 IPS X 3/8 CMP X 12 (DN6-SILICONE) (NL, NSF-61-12 & WRAS)	2
for ITEM 6.6	14	882042-99 KEY, ALLEN, 5/64", BLACK	1
	15	223472-99 KEY, TT CACHE AERATOR INSERT	1

