



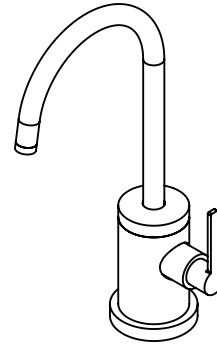
Features

- Available in 28 finishes including 13 PVD finishes
- All brass construction
- Insulated to reduce heat to faucet
- Self-Closing for hot water
- Max flow rate: 0.5 gpm (1.9 L/min)
- **Not** compatible with RO filter units
- Requires Hot Water Tank (9628SS) sold separately

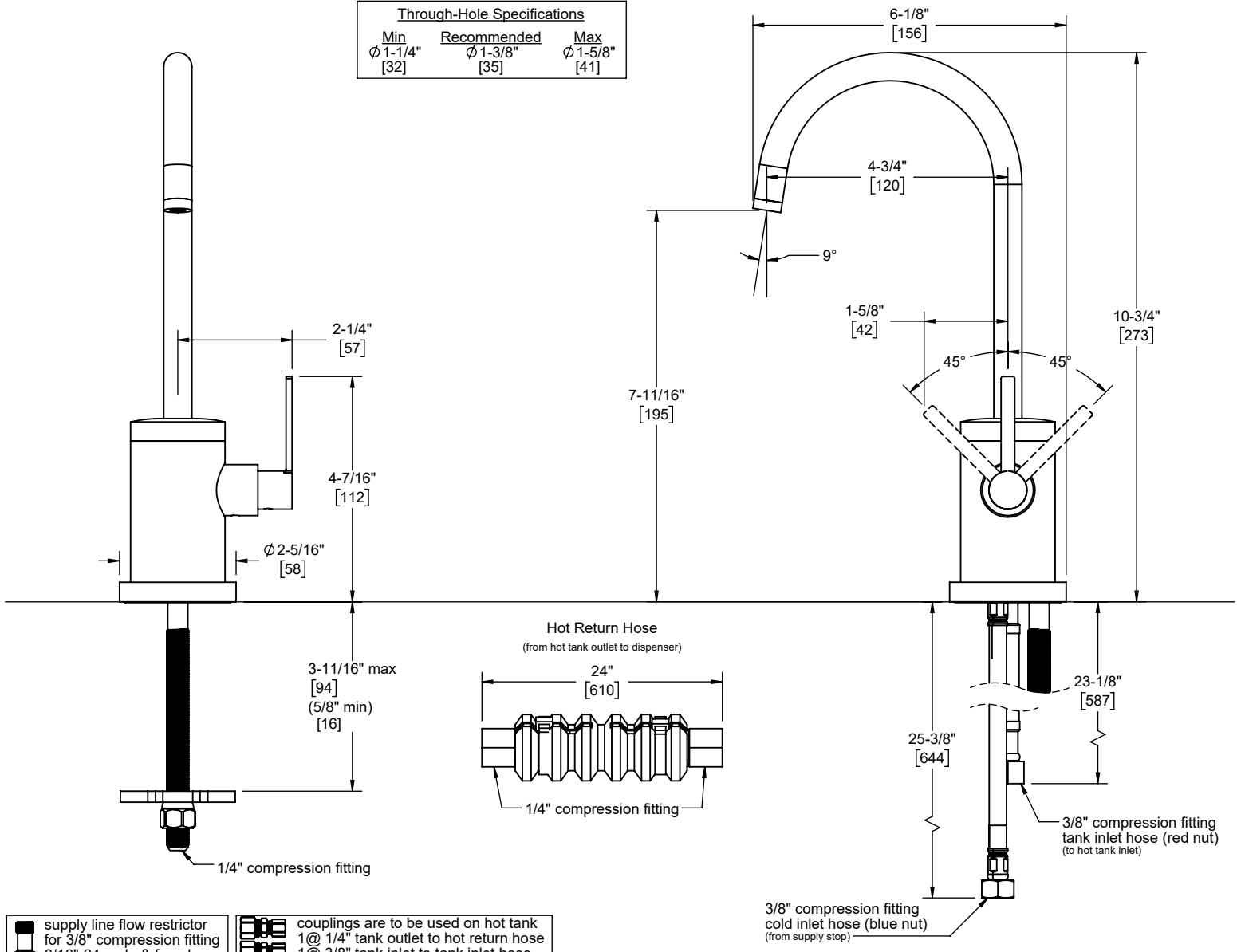
Codes/Standards Applicable

Product meets or exceeds the following:

- ASME A112.18.1/CSA B125.1
- NSF 61, NSF 372, CEC, & DOE
- Commonwealth of MA
- ADA compliant



Through-Hole Specifications		
Min	Recommended	Max
Ø 1-1/4" [32]	Ø 1-3/8" [35]	Ø 1-5/8" [41]



- supply line flow restrictor for 3/8" compression fitting 9/16"-24 male & female
- couplings are to be used on hot tank 1@ 1/4" tank outlet to hot return hose 1@ 3/8" tank inlet to tank inlet hose

Specifications subject to change without notice

Dimensions are inches, rounded to 1/16"
[Dimensions in brackets are mm, rounded to 1mm]