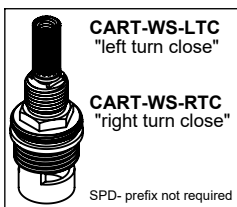
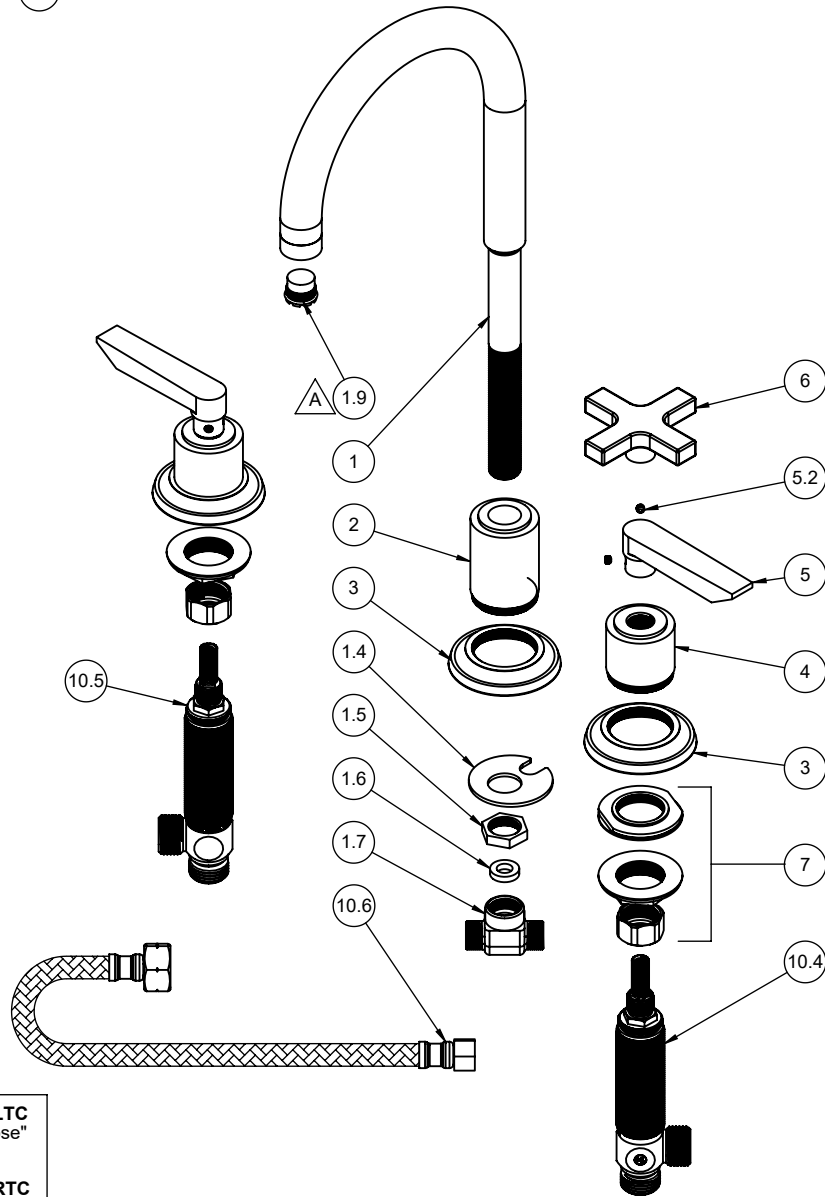


△ REQUIRES ITEM 12



To order spare parts add and/or replace as stated below:

SPD- prefix added to part number(s)
-ZZ replaced with finish code (see finish table)
-WW replaced with **-90** (light finish) or **-96** (dark finish)

Ex: **SPD-7-100463-PC** or **SPD-86030-96**

| ITEM | PART NO. | DESCRIPTION | QTY |
|--------------|-------------|--|-----|
| 1 | 7-100525-ZZ | ASM, LAV ARC SPT, SMOOTH <i>(incl. 1.4, 1.5, 1.6, 1.7, 1.9)</i> | 1 |
| 1.4 | 881766-99 | WSHR HORSESHOE | 1 |
| 1.5 | 881276-99 | NUT, HEX 3/8"-18 NPSM X .20 HT | 1 |
| 1.6 | 87162-80 | WSHR Ø8.5 X Ø15.5 X 3.5MM EPDM A70 (NSF-61-12 & WRAS) | 1 |
| 1.7 | 880083-90 | TEE, 3-WAY LAV - SS | 1 |
| 1.9 | 880356-81 | INSERT, 1.2 GPM, TT LAMINAR (CACHE) | 1 |
| 2 | 10411-ZZ | BASE, LAV SPT W/THRU-HOLE | 1 |
| 3 | 10363-ZZ | RING, BASE, TRAD | 3 |
| 4 | 652120-ZZ | ESCUTCHEON, 65 & 66 SERIES | 2 |
| for 4502A | 5 | 7-100135-ZZ ASM, LEVER HANDLE - ART DECO <i>(incl. 5.2)</i> | 2 |
| | 5.2 | 86030-WW SETSCREW 8-32 X 1/8 SCKT HD CUP PT SS | 2 |
| for 4502AX | 6 | 7-100267-ZZ ASM, SQ. CROSS HDL <i>(incl. 5.2)</i> | 2 |
| | 7 | 6-200293 KIT, W/S STD NUT - 2 SETS (1 SET - 6-200293-1) | 1 |
| | 10.4 | 6-200087 ASM, COLD-LAV "NL" BODY & CART (.25 Pb)-G4 <i>(incl. CART-WS-LTC)</i> | 1 |
| | 10.5 | 6-200088 ASM, HOT-LAV "NL" BODY, CART (.25 Pb)-G4 <i>(incl. CART-WS-RTC)</i> | 1 |
| | 10.6 | 880099-99 HOSE, POLY BRAIDED, 1/2 IPS X 3/8 CMP X 12 (DN6-SILICONE) (NL, NSF-61-12 & WRAS) | 2 |
| for ITEM 5.2 | 11 | 882042-99 KEY, ALLEN, 5/64", BLACK | 1 |
| | 12 | 223472-99 KEY, TT CACHE AERATOR INSERT | 1 |