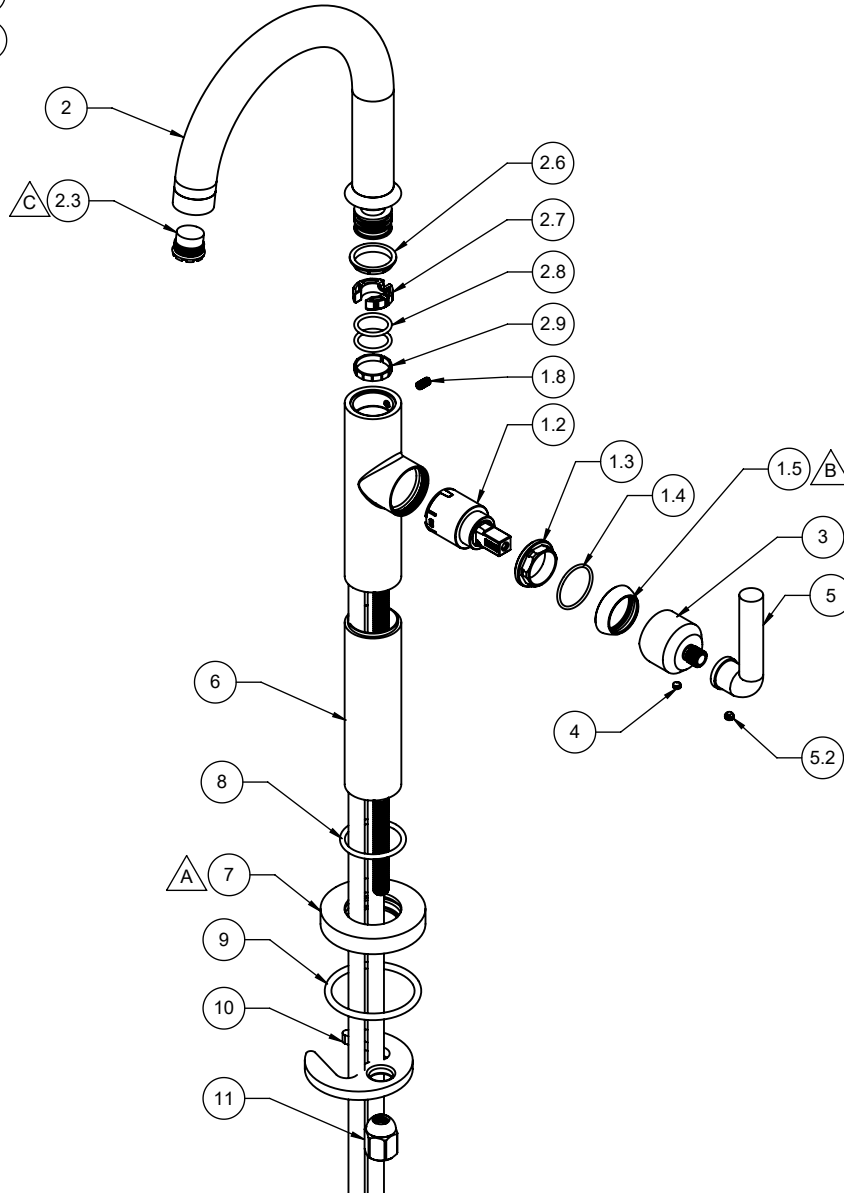


**7509-1**  
**7509-2**

- △ A REQUIRES ITEM (8) AND (9)
- △ B REQUIRES ITEM (1.4)
- △ C REQUIRES ITEM (13)



To order spare parts add and/or replace as stated below:

**SPD-** prefix added to part number(s)  
**-ZZ** replaced with finish code (see finish table)  
**-WW** replaced with **-90** (light finish) or **-96** (dark finish)

Ex: **SPD-7-100463-PC** or **SPD-86030-96**

ITEM	PART NO	DESCRIPTION	QTY	
1.2	880102-99	CART 25MM, SNGL LVR	1	
1.3	10555-98	NUT, 25MM CART KIT PACKING	1	
1.4	87145-80	O-RING Ø23.00 X 1.50 (NA) BUNA-N A70	1	
1.5	10556-ZZ	BONNET, TRANS KIT	1	
1.8	86032-WW	SETSCREW 8-32 X 5/16 SCKT HD CUP PT SS	1	
2	7-100543-ZZ	ASM, Ø22MM SHBF SPOUT. CONT. (incl. 2.3, 2.6, 2.7, 2.8, 2.9)	1	
2.3	880356-81	INSERT, 1.2 GPM, TT LAMINAR (CACHE)	1	
2.6	10558-81	BUSHING, KIT SPT ADPTR	1	
2.7	11235-81	BUSHING, SHBF SPT ADAPTER	1	
2.8	87019-80	O-RING Ø16.00 X 2.00 (NA) EPDM (NSF 61-18)	2	
2.9	11301-81	FRICTION RING, SHBF, NSF 61	1	
3	11189-ZZ	HDL HUB, SHBF	1	
4	86170-90	SETSCREW 8-32 X 1/8" SCKT CONE PT SS	1	
5	7-100296-ZZ	ASM, HANDLE, SMOOTH DISPENSER (incl. 5.2)	1	
5.2	86235-WW	SETSCREW 10-24 X 1/8 SCKT HD CUP PT SS	1	
for all -2	6	11190-ZZ	BODY EXTENSION, 30MM X 107MM, SHBF	1
	7	10509-ZZ	BASE RING, KIT CONT SLIM	1
	8	87147-80	O-RING Ø29.82 X 2.62 (-123) BUNA-N A70	1
	9	87139-80	O-RING Ø44.04 X 3.53 (-224) BUNA-N A70	1
	10	880309-98	MOUNTING BRACKET, SINGLE HOLE CRESCENT	1
	11	10184-98	NUT, HEX W/ DOME	1
	13	223472-99	KEY, TT CACHE AERATOR INSERT	1
for ITEM 5.2	14	882043-99	KEY, ALLEN, 3/32", BLACK	1
for ITEM 4	15	882042-99	KEY, ALLEN, 5/64", BLACK	1