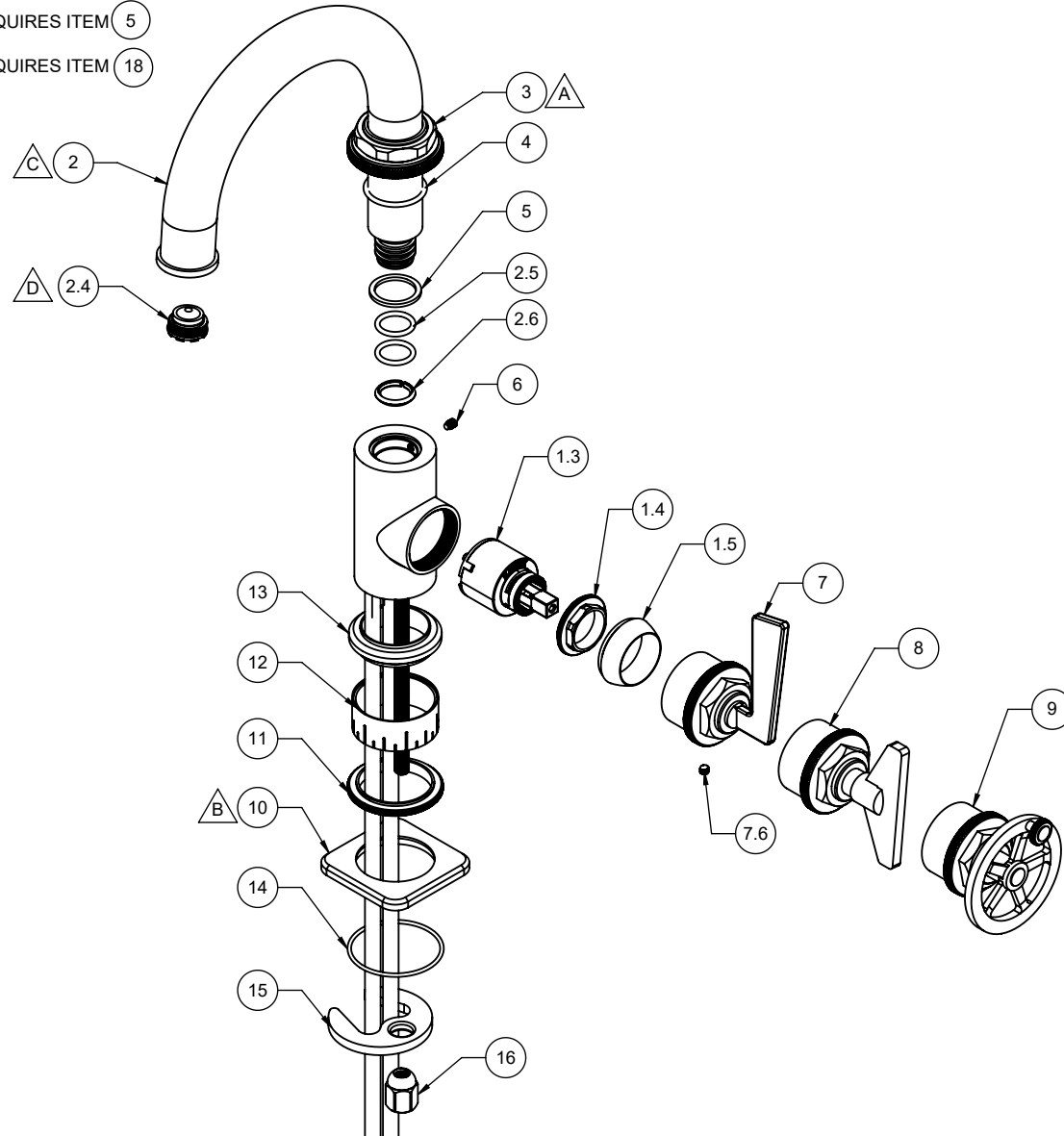


8609-1
8609B-1
8609W-1

- △ A REQUIRES ITEM 4
- △ B REQUIRES ITEM 14
- △ C REQUIRES ITEM 5
- △ D REQUIRES ITEM 18



To order spare parts add and/or replace as stated below:

SPD- prefix added to part number(s)
-ZZ replaced with finish code (see finish table)
-WW replaced with **-90** (light finish) or **-96** (dark finish)

Ex: **SPD-7-100463-PC** or **SPD-86030-96**

ITEM	PART NO	DESCRIPTION	QTY.	
1.3	880456-99	CART, 35MM SNGL LVR PROGRESSIVE CERAMIC DISC MIXING	1	
1.4	10564-98	NUT, 35MM CART KIT PACKING	1	
1.5	10565-ZZ	BONNET, STD KIT	1	
2	7-100325-ZZ	ASM, SIDE SINGLE HOLE SPOUT, CANE <i>(incl. 2.4, 2.5, 2.6)</i>	1	
2.4	880433-81	INSERT, JUNIOR, 1.2 GPM CACHE AERATED	1	
2.5	87157-80	O-RING Ø17.12 X 2.62 (-115) BUNA-N A70 (NSF-61-12 & WRAS)	2	
2.6	542920-99	C-CLAMP, PLASTIC, SPOUT	1	
3	10874-ZZ	TRIM, INDUSTRIAL SINGLE HOLE TOP	1	
4	87147-80	O-RING Ø29.82 X 2.62 (-123) BUNA-N A70	1	
5	87051-81	WSHR .902" X 1.124" X .080" UHMW BLK	1	
6	86244-90	SETSCREW 10-24 X 1/4 SCKT HD EXT TIP SS	1	
for 85 Series	7	7-100328-ZZ	ASM, FLAG LEVER, INDUST PROG SINGLE HOLE <i>(incl. 7.6)</i>	1
	7.6	86047-WW	SETSCREW 10-24 X 3/16 SCKT HD CONE PT SS	1
for 85B Series	8	7-100330-ZZ	ASM, BLADE/KEY, INDUST PROG SINGLE HOLE <i>(incl. 7.6)</i>	1
for 85W Series	9	7-100329-ZZ	ASM, HANDLE, RD HUB & BLADE LEVER <i>(incl. 7.6)</i>	1
	10	10820-ZZ	RING, SQ ROUNDED BASE	1
	11	10887-ZZ	COIN, ESCUTCHEON BOTTOM	1
	12	10822-ZZ	ESCUTCHEON, HASHED	1
	13	10867-ZZ	MID TRIM, SINGLE HOLE SIDE HDL	1
	14	87263-80	O-RING Ø49.00 X 2.00 (NA) BUNA-N A70	1
	15	880309-98	MOUNTING BRACKET, SINGLE HOLE CRESCENT	1
	16	10184-98	NUT, HEX W/ DOME	1
for ITEM 6 & 7.6	17	882043-99	KEY, ALLEN, 3/32", BLACK	1
	18	880255-81	KEY, JR AERATED CACHE	1