



California Faucets®

Descanso®

Industrial Dual Handle Wall Mount Pot Filler

Features

- 25+ artisan finishes including 12 PVD finishes
- All brass construction
- 1/4 turn ceramic disc cartridges
- Dual jointed swing spout
- 1/2" FIP inlet for quick connect
- Max flow rate: 4.0 gpm (15.1 L/min) at 60 psi

- K30-200-SL
- K30-200-KL
- K30-200-FL
- K30-200-TL
- K30-200-SX
- K30-200-KX
- K30-200-FX
- K30-200-TX

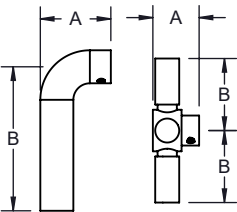
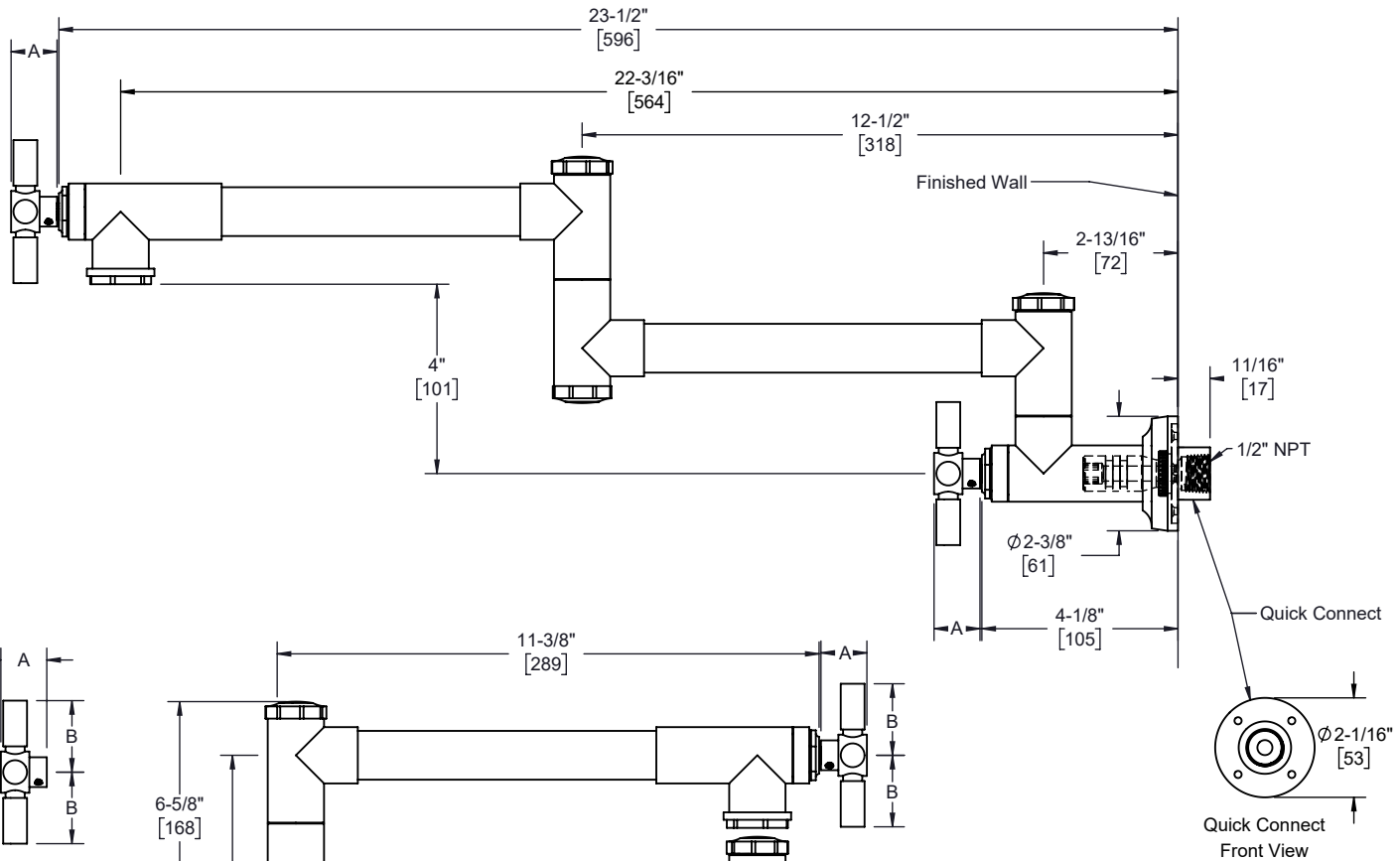


K30-200-SX shown

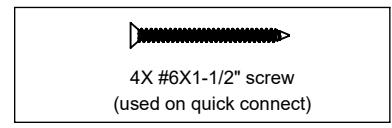
Codes/Standards Applicable

Product meets or exceeds the following:

- ASME A112.18.1/CSA B125.1
- NSF 61, & NSF 372
- Commonwealth of MA
- ADA compliant (Lever handles only)



Handle Style	A	B
SL	1-1/2" [38]	3" [76]
KL FL TL	1-1/2" [38]	3-1/8" [79]
SX KX FX TX	15/16" [24]	1-1/2" [38]



Thru-Hole Specifications		
Min	Recommended	Max
Ø 1-1/8" [29]	Ø 1-1/8" [29]	Ø 1-1/4" [32]

Specifications subject to change without notice

Dimensions are inches, rounded to 1/16"
[Dimensions in brackets are mm, rounded to 1mm]