



California Faucets®

SHOWERHEAD

5-5/8" MULTI-FUNCTION CONTEMPORARY

Features

- 1/2" FIP inlet
- 3 function: rain, air & massage
- Self-cleaning rubber jets
- Solid brass pivot ball & body
- 5-5/8" diameter, gray face
- Available in 28 finishes including 13 PVD finishes
- Replace .FR with desired max flow rate:
SH-083.25 for 2.5 gpm
SH-083.20 for 2.0 gpm
SH-083.18 for 1.8 gpm

SH-083.25

SH-083.20

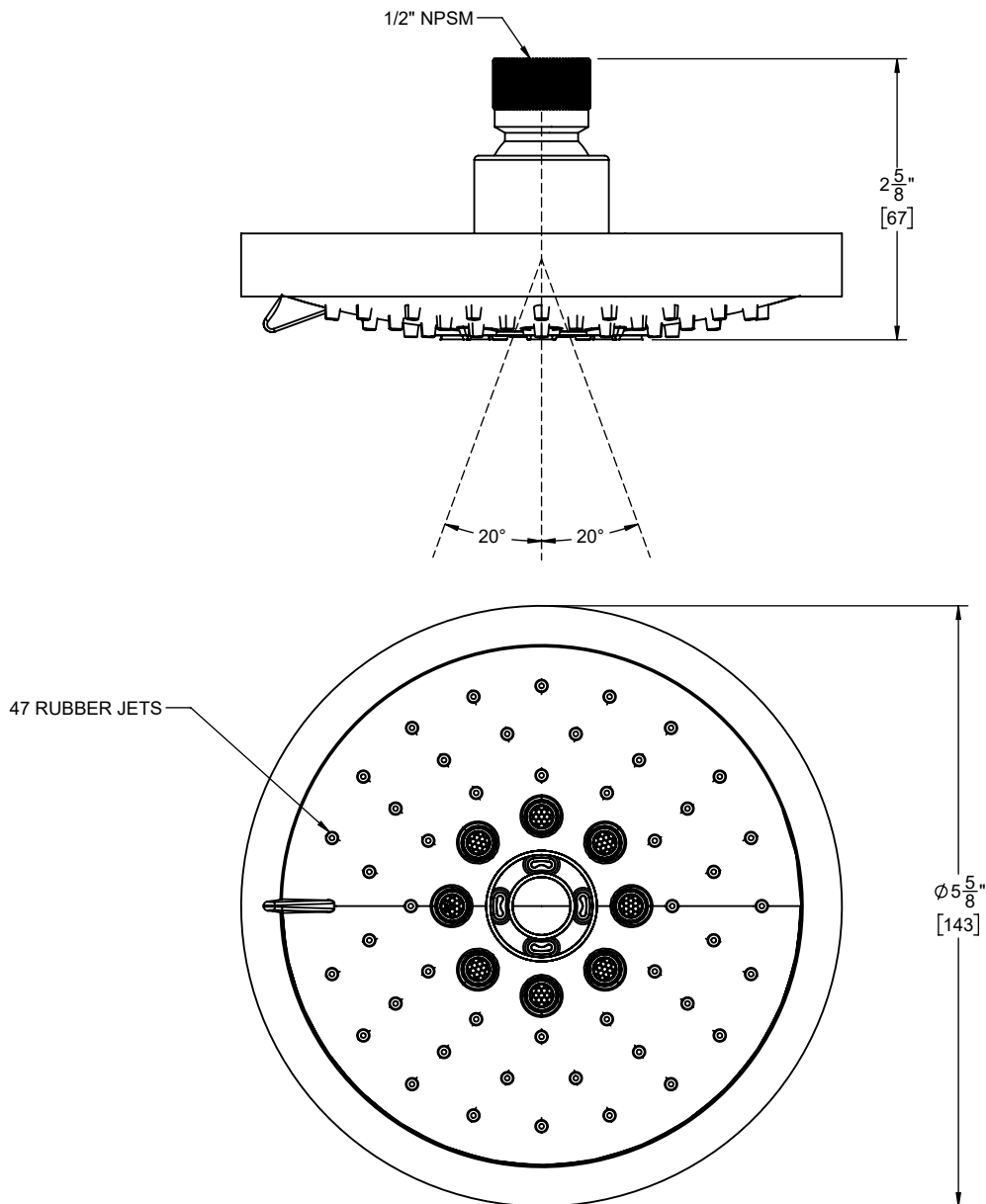
SH-083.18



Codes/Standards

Product meets or exceeds the following:

- ASME A112.18.1/CSA B125.1
- CEC (1.8 gpm)
- DOE (2.5, 2.0, & 1.8 gpm)
- Commonwealth of MA
- EPA WaterSense Showerhead (2.0 gpm)



Features

- Available in 28 finishes including 13 PVD finishes
- All brass construction

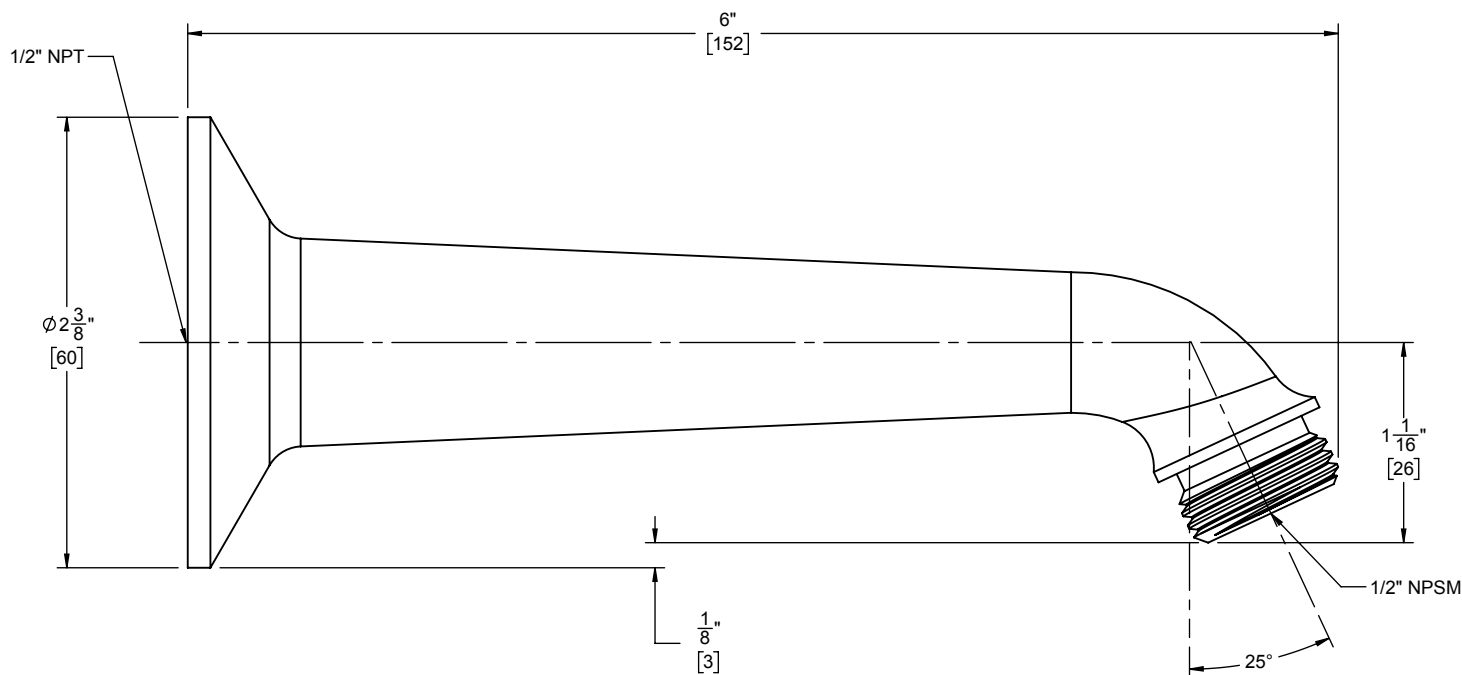
SH-01.6



Codes/Standards

Product meets or exceeds the following:

- ASME A112.18.1/CSA B125.1





California Faucets®

Handshower

4-1/16" MULTI-FUNCTION CONTEMPORARY HANDSHOWER

Features

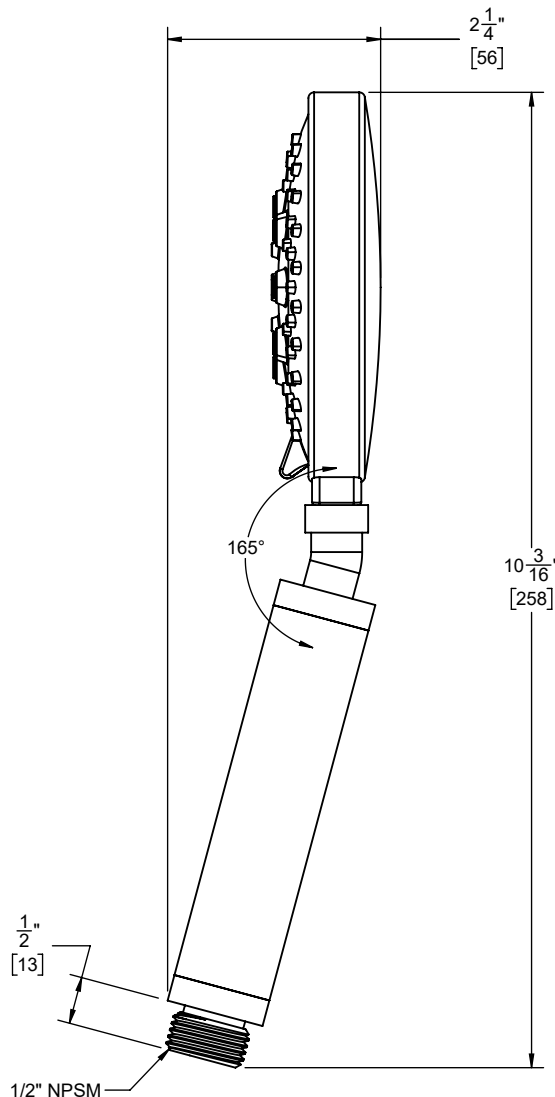
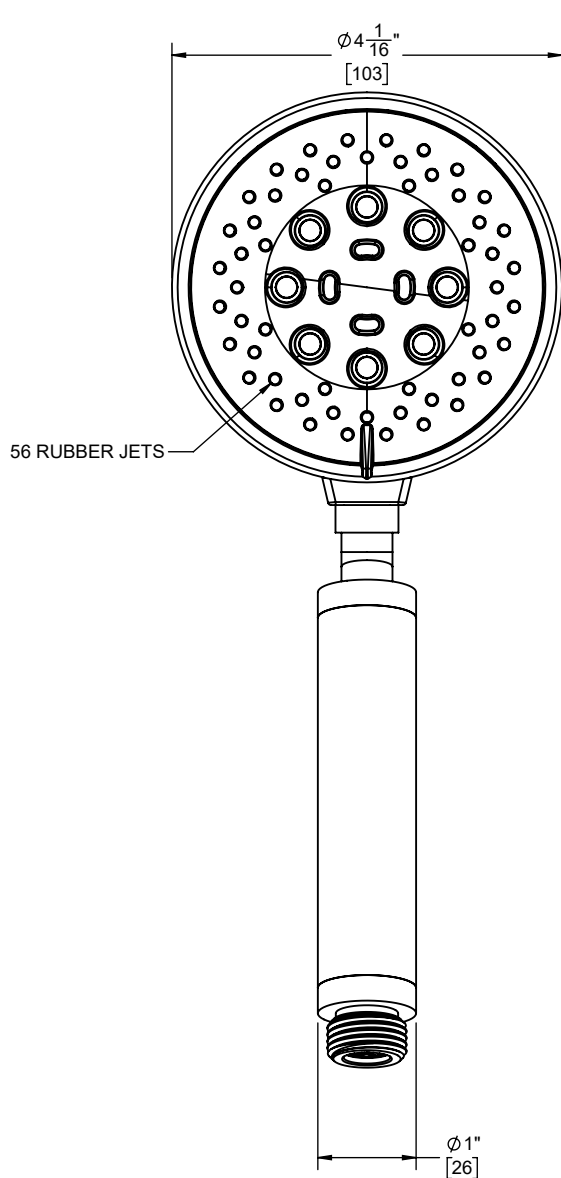
- 1/2" MIP inlet
- 3 function handshower: rain, air, & massage
- Self cleaning rubber jets
- Brass body
- 4-1/16" diameter, gray face
- Replace .FR with desired max flow rate:
HS-083.25 for 2.5 gpm
HS-083.20 for 2.0 gpm
HS-083.18 for 1.8 gpm
- Over 28 finishes including 13 PVD finishes

Codes/Standards Applicable

Product meets or exceeds the following:

- ASME A112.18.1/CSA B125.1
- CEC (1.8 gpm)
- DOE (1.8, 2.0, & 2.5 gpm)
- Commonwealth of MA
- EPA WaterSense (2.0 gpm)

HS-083.18
HS-083.20
HS-083.25



SPECIFICATIONS SUBJECT TO CHANGE WITHOUT NOTICE

ALL DIMENSIONS SHOWN TO NEAREST 1/16"
[ALL DIMENSIONS SHOWN TO NEAREST 1MM]



California Faucets®

SHOWER

Handshower supply elbow

Features

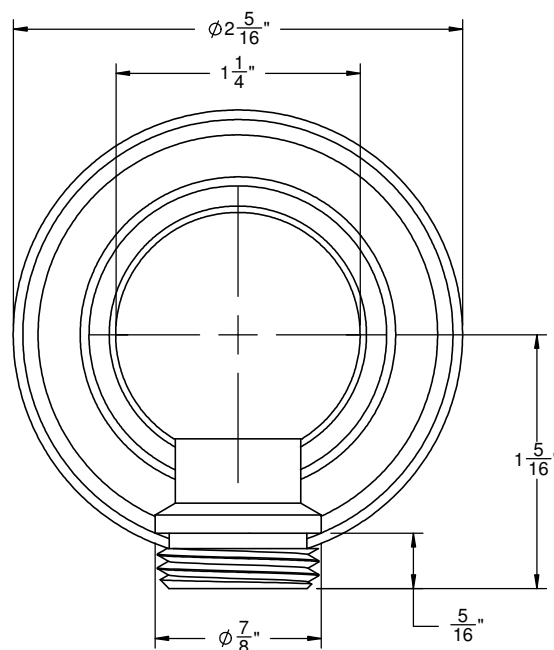
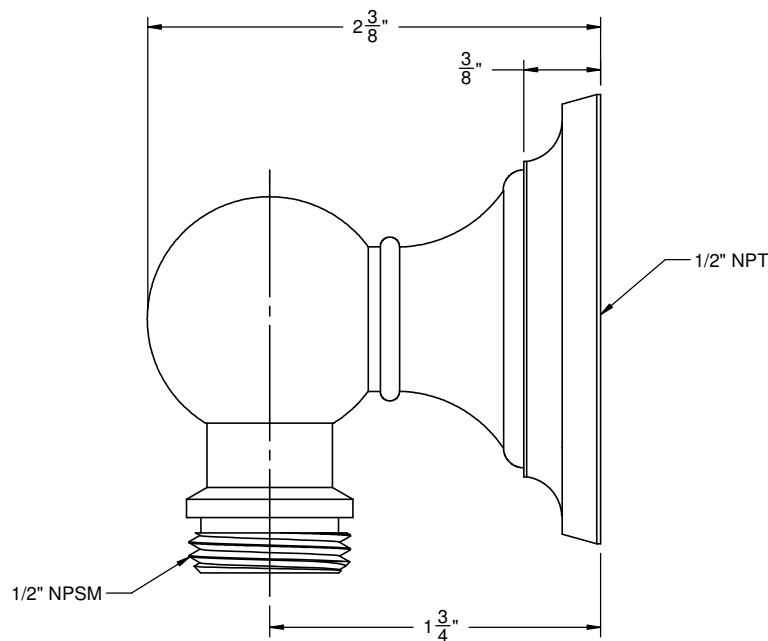
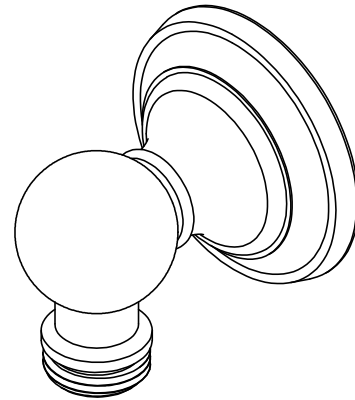
- Over 30 finishes including 14 PVD finishes
- Solid brass construction
- 1/2" NPT (female) inlet connection
- 1/2" NPSM (male) outlet connection

Codes/Standards Applicable

Meets or exceeds the following at date of manufacture:

- ASME A112.18.1/CSA B125.1

SH-10-48



ALL DIMENSIONS SHOWN TO NEAREST 1/16"



California Faucets®

SLIDE BAR

TRADITIONAL HANDSHOWER SLIDE BAR

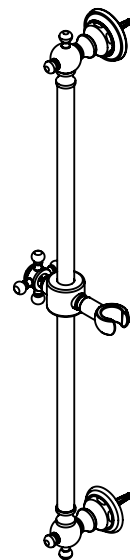
Features

- Available in 28 finishes including 13 PVD finishes
- All brass construction
- Matching handle & escutcheon for many California Faucets series
- Bar pivots 180° without loosening slide handle
- Adjustable position slide with positive-lock swivel holder
- Accepts most conical handshower hoses
- Right or left handed based on installation
- Includes all mounting hardware

Codes/Standards Applicable

Product meets or exceeds the following:

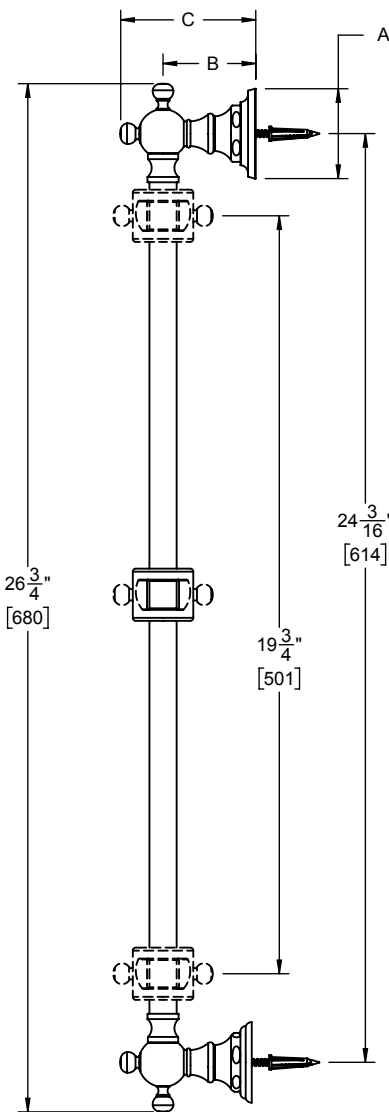
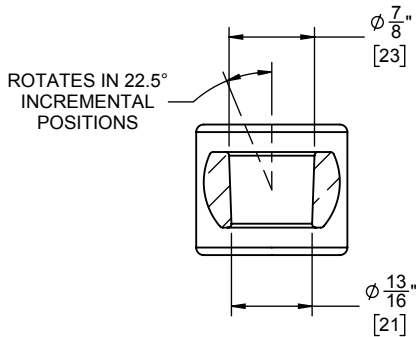
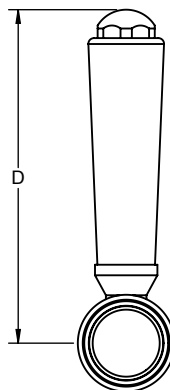
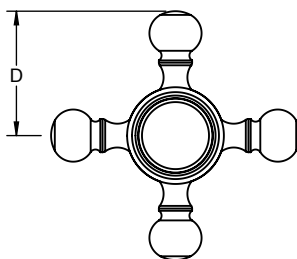
- ASME A112.18.1/CSA B125.1
- ADA (all lever handles)



SB-XX

XX = SERIES HANDLE

TABLE				
SERIES	A	B	C	D
33	2 $\frac{1}{8}$ [54]	2 $\frac{9}{16}$ [65]	3 $\frac{11}{16}$ [94]	3 $\frac{1}{2}$ [89]
34	2 $\frac{1}{8}$ [54]	2 $\frac{9}{16}$ [65]	3 $\frac{11}{16}$ [94]	1 $\frac{1}{8}$ [29]
35	2 $\frac{1}{8}$ [54]	2 $\frac{9}{16}$ [65]	3 $\frac{11}{16}$ [94]	3 $\frac{7}{16}$ [87]
36	2 $\frac{1}{8}$ [54]	2 $\frac{9}{16}$ [65]	3 $\frac{11}{16}$ [94]	3 $\frac{1}{16}$ [78]
38	2 $\frac{7}{8}$ [73]	2 $\frac{11}{16}$ [68]	3 $\frac{3}{4}$ [95]	2 $\frac{7}{8}$ [78]
40	2 $\frac{13}{16}$ [71]	2 $\frac{5}{8}$ [67]	3 $\frac{3}{4}$ [95]	3 $\frac{1}{4}$ [83]
42	2 $\frac{13}{16}$ [71]	2 $\frac{5}{8}$ [67]	3 $\frac{3}{4}$ [95]	2 $\frac{15}{16}$ [75]
44	2 [51]	2 $\frac{7}{8}$ [73]	4 $\frac{1}{16}$ [103]	2 $\frac{15}{16}$ [75]
45	2 $\frac{5}{16}$ [59]	2 $\frac{5}{16}$ [59]	3 $\frac{3}{8}$ [86]	3 [76]
46	2 $\frac{5}{16}$ [59]	2 $\frac{3}{8}$ [60]	3 $\frac{1}{2}$ [89]	3 $\frac{7}{16}$ [87]
47	2 $\frac{5}{16}$ [59]	2 $\frac{3}{8}$ [60]	3 $\frac{1}{2}$ [89]	1 $\frac{3}{8}$ [35]
48	2 $\frac{5}{16}$ [59]	2 $\frac{5}{16}$ [59]	3 $\frac{13}{16}$ [97]	3 $\frac{1}{8}$ [79]
48X	2 $\frac{5}{16}$ [59]	2 $\frac{5}{16}$ [59]	3 $\frac{13}{16}$ [97]	1 $\frac{1}{2}$ [38]
50	2 $\frac{9}{16}$ [65]	2 $\frac{5}{16}$ [59]	3 $\frac{3}{8}$ [86]	2 $\frac{13}{16}$ [71]
51	3 $\frac{1}{4}$ [83]	2 $\frac{11}{16}$ [68]	3 $\frac{13}{16}$ [97]	1 $\frac{1}{16}$ [27]
55	2 $\frac{13}{16}$ [71]	2 $\frac{5}{8}$ [67]	3 $\frac{3}{4}$ [95]	3 $\frac{5}{16}$ [84]
59	2 $\frac{13}{16}$ [71]	2 $\frac{13}{16}$ [71]	3 $\frac{7}{8}$ [98]	3 [76]
60	2 $\frac{1}{8}$ [54]	2 $\frac{5}{16}$ [59]	3 $\frac{7}{16}$ [87]	1 $\frac{5}{16}$ [33]
63	2 $\frac{5}{16}$ [59]	2 $\frac{3}{8}$ [60]	3 $\frac{1}{2}$ [89]	1 $\frac{9}{16}$ [40]
64	2 $\frac{13}{16}$ [71]	2 $\frac{13}{16}$ [71]	3 $\frac{7}{8}$ [98]	3 $\frac{5}{16}$ [84]
67	2 $\frac{1}{8}$ [54]	2 $\frac{5}{16}$ [59]	3 $\frac{7}{16}$ [87]	1 $\frac{3}{8}$ [35]
68	2 $\frac{1}{8}$ [54]	2 $\frac{9}{16}$ [65]	3 $\frac{11}{16}$ [94]	3 $\frac{3}{8}$ [86]
69	2 $\frac{1}{8}$ [54]	2 $\frac{9}{16}$ [65]	3 $\frac{11}{16}$ [94]	3 $\frac{1}{2}$ [89]



DIMENSIONS SHOWN TO NEAREST 1/16"
[DIMENSIONS SHOWN TO NEAREST 1mm]



California Faucets®

Handshower

HANDSHOWER HOSE

Features

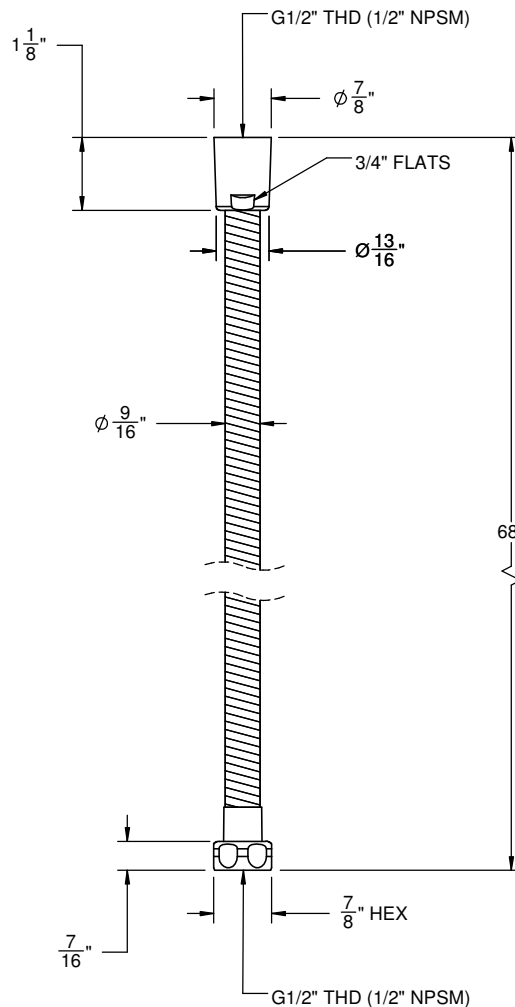
- 1/2" FIP inlet
- 1/2" FIP outlet
- Double spiral out hose for added strength
- Solid brass construction
- Over 30 finishes include 16 PVD finishes

Codes/Standards Applicable

Meets or exceeds the following at date of manufacture:

- ASME A112.18.1/CSA B125.1

HS-68



ALL DIMENSIONS SHOWN TO NEAREST 1/16"



California Faucets®

Rincon Bay™

STYLETHERM TRIM ONLY W/ SINGLE VOLUME CONTROL

Features

- 100° F safety stop button with manual override
- 5-1/4" square faceplate; flat profile
- Engraved brass temperature ring
- Single integral volume control
- All brass construction
- Over 30 finishes including 15 PVD finishes

Codes/Standards Applicable

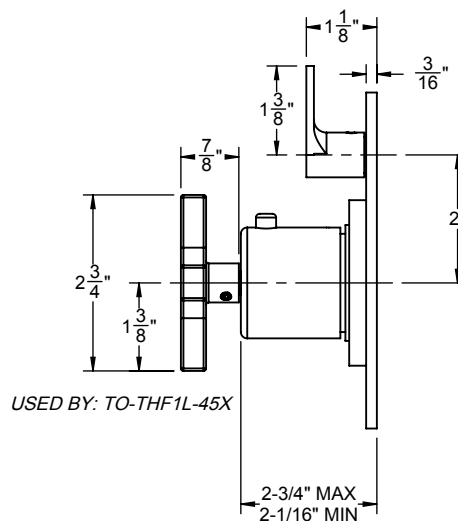
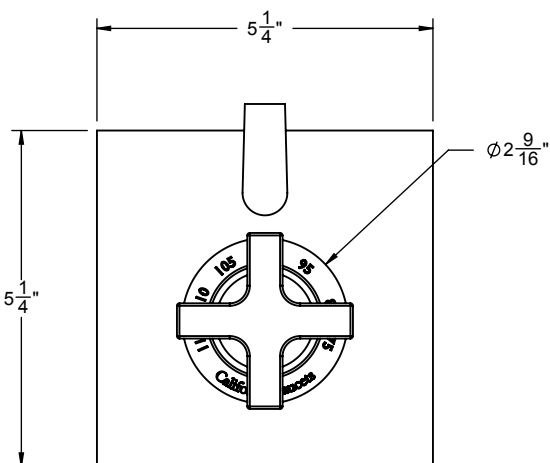
Product meets or exceeds the following:

- ASME A112.18.1/CSA B125.1
- ASSE 1016
- ADA compliant (with lever handles)

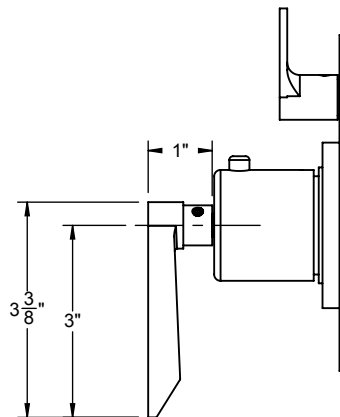
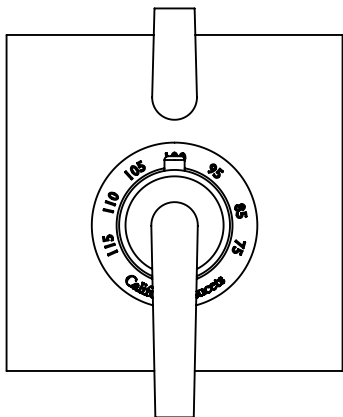
TO-THF1L-45
TO-THF1L-45X



TO-THF1L-45 SHOWN



USED BY: TO-THF1L-45X



USED BY: TO-THF1L-45