



Features

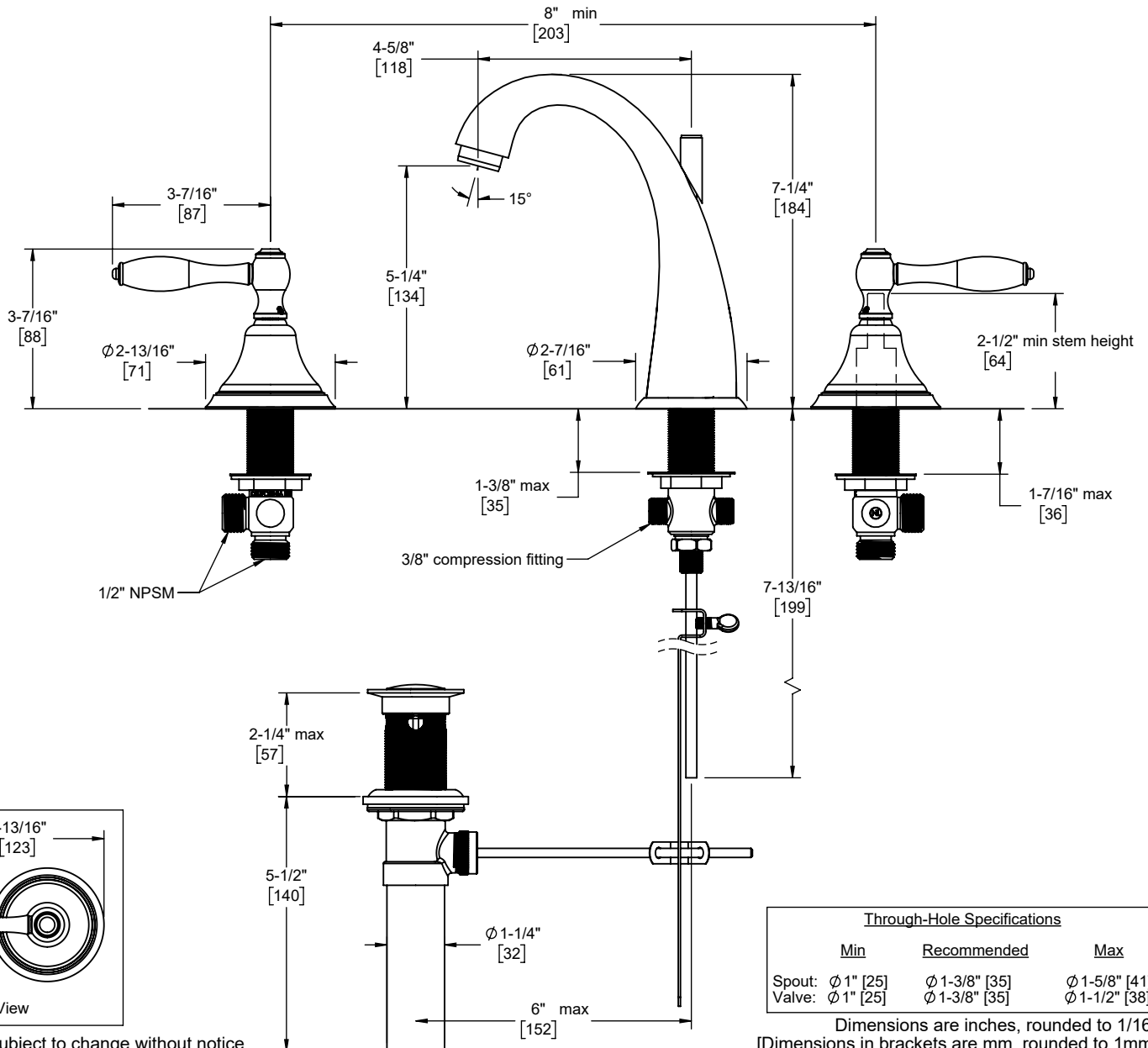
- Available in 27 finishes including 12 PVD finishes
- All brass construction
- 4-5/8" spout center to center
- 1/4 turn ceramic disc cartridge(s)
- Flexible braided hoses for ease of installation
- Φ 1-1/4" all brass touch style pop up drain assembly
- 1.2gpm (4.5 L/min) max flow rate



Codes/Standards

Product meets or exceeds the following:

- ASME A112.18.1/CSA B125.1
- NSF 61, NSF 372, CEC & DOE
- EPA WaterSense
- Commonwealth of MA
- ADA compliant



Specifications subject to change without notice