

## DOOR HANDLE / PRIVACY / LINEAR

---

**ACTION: DOOR HANDLE**

---

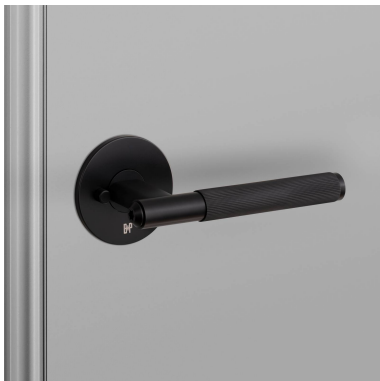
**KNURL: LINEAR**

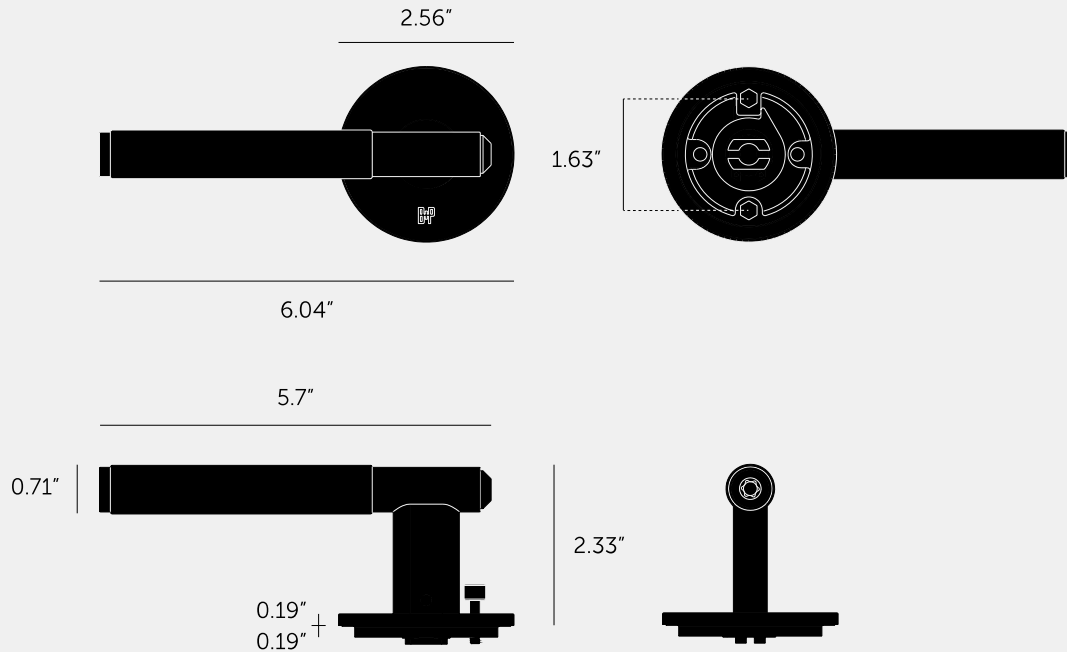
---

**RANGE: DOOR HANDLES**

---

A door lever handle made from solid metal and made from solid metal and featuring our elegant linear knurled detailing and torx screw. Works great on internal doors and can be combined with our matching door accessories. Available in four metal finishes: Steel, brass, gun metal and black.





#### SPECIFICATIONS

A pair of solid metal door handles, designed for installation onto a "pre-drilled" door (2" bore hole). Designed for use with US (centre distance 41.5 mm or 1-5/8") specific latches. Compatible with either tubular latches or mortise locks. Fits doors of thicknesses: minimum 1-3/8" to maximum 2" (with supplied fixings\*).  
\*For thicker doors, longer through bolts and a longer spindle will need to be sourced.

#### FINISH & SKU NUMBERS

sku:	finish:
NLH-051041	BRASS
NLH-071042	STEEL
NLH-481040	WELDERS BLACK
NDDK-454435	SMOKED BRONZE

#### CARE INSTRUCTIONS

Wipe with damp cloth with no loose hairs, avoid using any chemicals. Please note all finishes are prone to aging.

#### INCLUDED

1 x pair of Door Lever Handles  
1 x 5 mm x 5 mm x 112 mm Square Spindle  
2 x 5mm to 8mm Spindle Adapters (pre-installed)  
2-3/8" backset US privacy tubular latch with through bolt fixings

#### PLEASE NOTE

DISCLAIMER: Always consult a trade professional when installing these door handles. Buster + Punch is not responsible for the usage or feasibility of installation requirements. This product is not suitable for damp or wet environments. Our door handles are intended for internal use only. Not for commercial use. The Smoked Bronze finish is a living finish so it will change with time and usage.