

## 2G TOGGLE SWITCH / NON-LOGO

---

action: 3-Way Toggle

---

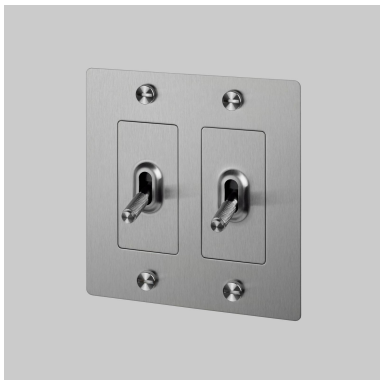
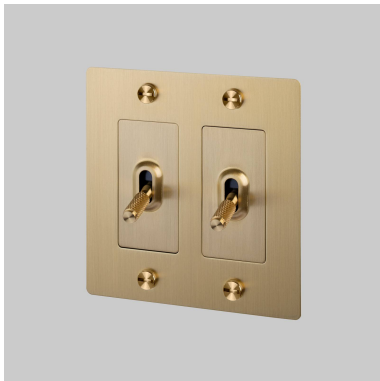
knurl: Cross

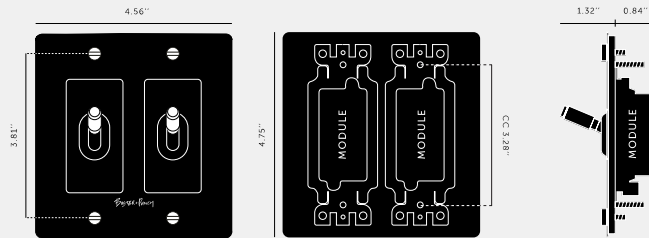
---

range: Light Switches

---

A solid metal toggle switch with a diamond-cut knurled knob to feel amazing with every touch. The switch is finished with a flat plate and our signature solid metal coin screws. Available in five different finishes. You can also team them up with our dimmers, duplex and USB outlets in matching finishes.





**SPECIFICATIONS**

Our Metal Electricity range has solid stainless steel plates, in our signature white, steel, brass, smoked bronze and black finishes.

Module: NTM-01384 (US-TO-MO-A) (2 per unit)

Style: On/ Off Toggle switch

120-277V AC /15 A / 60 HZ

3 way switching (can be controlled from 2 locations)

Certification: cETLus 5005703

**FINISH & SKU NUMBERS**

sku:	finish:
NTG-023821	● BLACK
NTG-053822	● BRASS
NTG-093823	● SMOKED BRONZE
NTG-073824	● STEEL
NTG-143825	● WHITE

**CARE INSTRUCTIONS**

Wipe with damp cloth with no loose hairs, avoid using any chemicals. All finishes are prone to aging.

**INCLUDED**

\*1 x 2G Wall Plate

2 x Toggle Module

1 x 2G Dimmer Detail Kit\*

**PLEASE NOTE**

DISCLAIMER: Always consult a trade professional when installing this toggle switch. Buster + Punch is not responsible for the usage or feasibility of installation requirements. This product is not suitable for damp or wet environments.