

## 3G PLATE / NON-LOGO

---

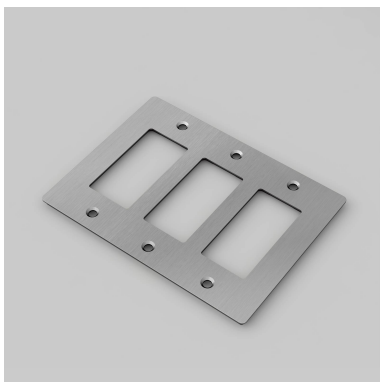
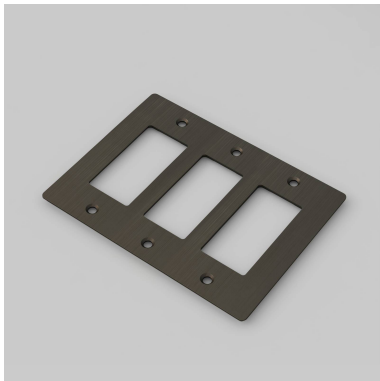
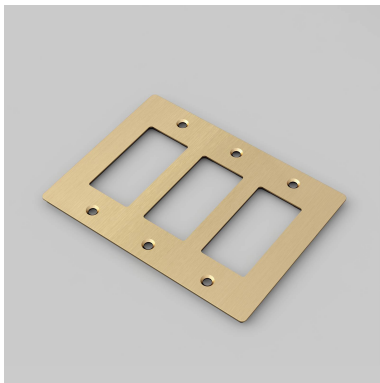
action: Electricity Wall Plate

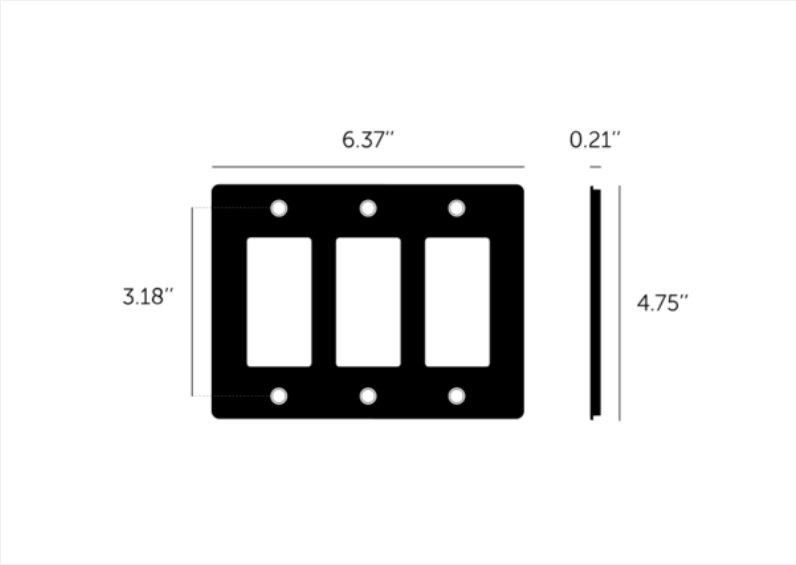
---

range: Wall Plates

---

Decorative cover plate sets in a variety of quality finishes, complete with flush fitting infills. Designed to be completed with range of module inserts to suit a broad spectrum of requirements for lighting control, power supply and device charging. Always finish with our signature details kit & coin screws.





#### SPECIFICATIONS

Our Metal Electricity range has solid stainless steel plates, in our signature white, steel, brass, smoked bronze and black finishes.

Style: 3G metal plate + infills.

For use with class 1 modules only / Must be grounded

Recommended back box:

Standard flush mounted 3G back box. See dimensions of chosen module(s) for required back box depth.

#### FINISH & SKU NUMBERS

sku:	finish:
NPL-023587	● BLACK
NPL-053588	● BRASS
NPL-093589	● SMOKED BRONZE
NPL-073590	● STEEL
NPL-143591	● WHITE

#### CARE INSTRUCTIONS

Wipe with damp cloth with no loose hairs, avoid using any chemicals. All finishes are prone to aging.

#### INCLUDED

1 x 3G Wall Plate

#### PLEASE NOTE

DISCLAIMER: Always consult a trade professional when installing this plate. Buster + Punch is not responsible for the usage or feasibility of installation requirements. This product is not suitable for lint free or wet environments.