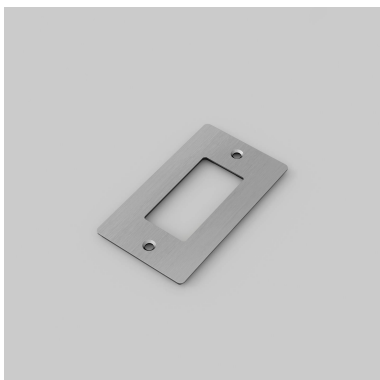
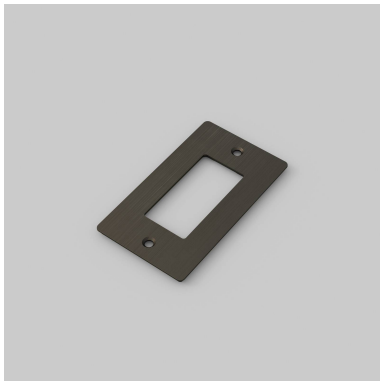
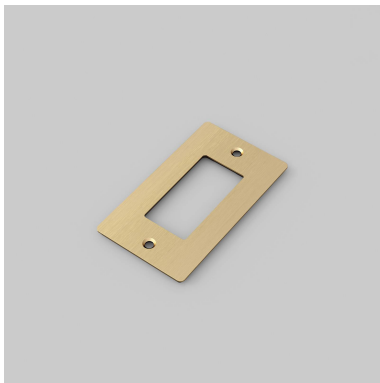


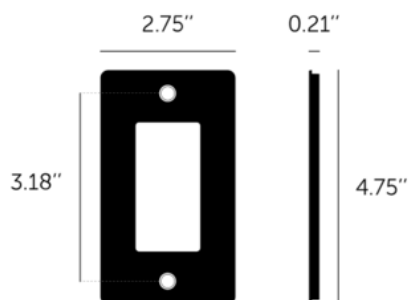
1G PLATE / NON-LOGO

action: Electricity Wall Plate

range: Wall Plates

Decorative cover plate sets in a variety of quality finishes, complete with flush fitting infills. Designed to be completed with range of module inserts to suit a broad spectrum of requirements for lighting control, power supply and device charging. Always finish with our signature details kit & coin screws.





SPECIFICATIONS

Our Metal Electricity range has solid stainless steel plates, in our signature white, steel, brass, smoked bronze and black finishes.

Style: 1G metal plate + infills.

For use with class 1 modules only / Must be grounded.

Recommended Back Box:

Standard flush mounted 1G back box. See dimensions of chosen module(s) for required back box depth.

FINISH & SKU NUMBERS

sku:	finish:
NPL-023577	● BLACK
NPL-053578	● BRASS
NPL-093579	● SMOKED BRONZE
NPL-073580	● STEEL
NPL-143581	● WHITE

CARE INSTRUCTIONS

Wipe with damp cloth with no loose hairs, avoid using any chemicals. All finishes are prone to aging.

INCLUDED

1 x 1G Wall Plate

PLEASE NOTE

DISCLAIMER: Always consult a trade professional when installing this plate. Buster + Punch is not responsible for the usage or feasibility of installation requirements. This product is not suitable for lint free or wet environments.