

**FORKED PENDANT /  
SHADE / GLOBE / OPAL  
/ MEDIUM**

---

action: Pendant Light

---

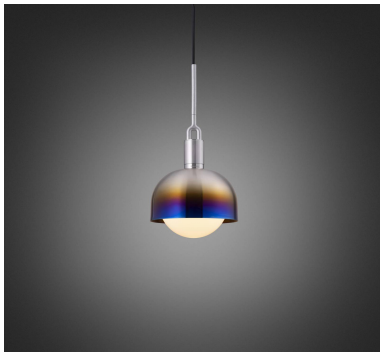
knurl: Linear

---

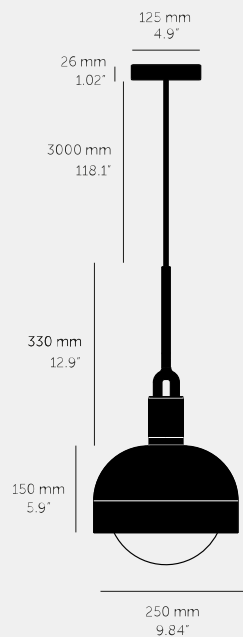
range: Forked

---

A light pendant made from cast and machined metal, featuring our signature diamond-cut linear knurl pattern and fork detailing, refined by hand. Its shade is made from hand-spun metal and it comes with a handblown glass globe.







#### SPECIFICATIONS

Pendant light

1x solid metal lamp holder

Adjustable 3000 mm cable

E26 / 110-120 VAC / 60HZ

Max 7W

Bulb included





cULus Listed SBLED

1x solid metal light shade

1x hand-blown glass globe

E26 compatible

#### FINISH & SKU NUMBERS

sku:	finish:
NFP-813163	 BRASS
NFP-893193	 BURNT STEEL
NFP-863183	 GUN METAL
NFP-833173	 STEEL

#### CARE INSTRUCTIONS

Wipe with dry cloth with no loose hairs, avoid using any chemicals.

Please note all finishes are prone to aging.

#### INCLUDED

1 x Forked Pendant

1 x Forked Shade

1 x Forked Globe

1 x Punch Bulb / Puck

#### PLEASE NOTE

DISCLAIMER: Always consult a trade professional when installing this light. Buster + Punch is not responsible for the usage or feasibility of installation requirements. This product is not suitable for damp or wet environments.