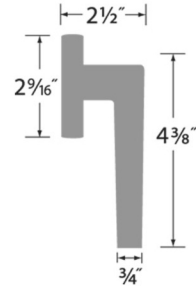
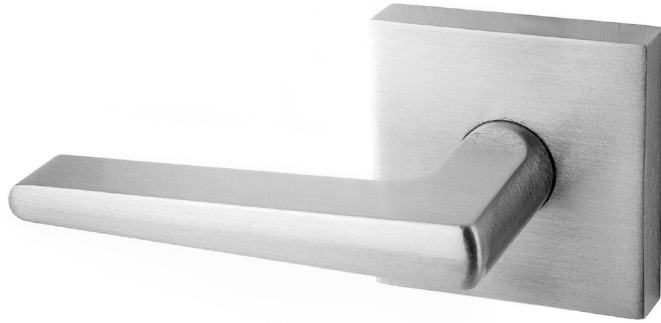


Bowman Collection



DESCRIPTION

PRODUCT CODE

Passage (hall/closet) Both sides always free

DHDW101BS

Privacy (bed/bath) Locked by push pin. Unlocked by push pin, lever turn, or emergency pin outside

DHDW102BS

Dummy (closet) Inactive, single-sided, flush mount with two wood screws

DHDW100BS

Handleset Interior Trim

DHDW100-HBS

Finishes

15 Satin Nickel
26 Polished Chrome
11P Vintage Bronze

Door Handing

Specify handing for privacy function only

Door Thickness

1 3/8" to 1 3/4"

Key Cylinder

No entry function

Strike Plate

2 1/4" x 1 3/4" full-lip radius corner standard

Latch

2 1/4" x 1" radius corner faceplate or
4 way drive-in latch
Adjustable 2 3/8" or 2 3/4"
45 degree turn radius
1/2" throw bolt

Door Prep

Crossbore 2 1/6"
Edgebore 1"

Materials

Zinc
All metal parts