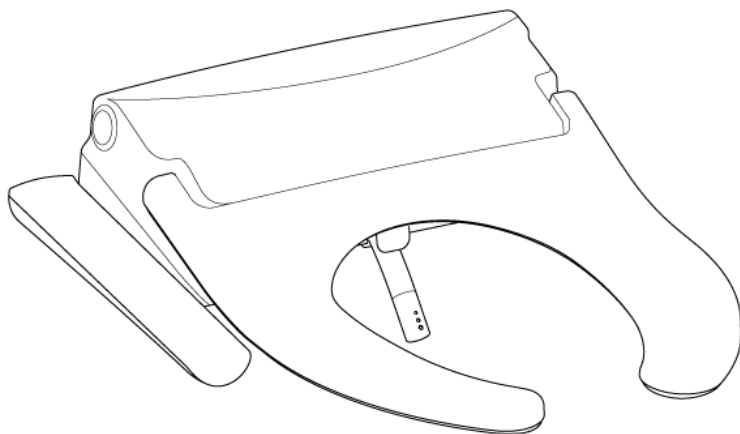


Brondell®

Swash Thinline T22 Bidet Toilet Seat with Open Front Less Cover and Side Arm Control

Model: T22-OFLC-EW



Contents

This manual contains important safety information. Before operating the bidet, please read this manual thoroughly, and retain it for future reference.

SAFETY INFORMATION

- 3** Important Safeguards

PRODUCT INFORMATION

- 7** Product Features
- 8** Product Dimensions
- 9** Product Parts

PRODUCT INSTALLATION

- 10** Installation Parts
- 11** Before Installation
- 12** Swash Installation
- 15** External Bidet Filter Installation

PRODUCT OPERATION

- 16** Control Panel
- 18** Using the Swash: Getting Started
- 19** Special Mode Operations
- 20** Expert Mode Operations Level 1
- 22** Expert Mode Operations Level 2

MAINTENANCE

- 24** Seat Cleaning, Removal, and Nozzle Cleaning
- 25** Mesh Filter and Carbon Deodorizer Cartridge
- 26** Product Storage

TECHNICAL INFORMATION

- 27** Troubleshooting
- 30** Product Specifications
- 31** Warranty
- 32** Contact Information

TRANSLATIONS

- 34** Spanish
- 66** French

Important Safeguards

READ ALL INSTRUCTIONS BEFORE USING

BE CAREFUL TO KEEP THIS SAFETY INFORMATION. PLEASE READ THIS INFORMATION TO PREVENT PROPERTY LOSS AND ENSURE SAFETY.

 **DANGER** 

Failure to observe the following warnings may result in electric shock, fire, personal injury, property damage, or product damage.

Do not use a damaged power plug or plug into a loose electric outlet.

Do not move the product by pulling the power cord.

Do not handle the product or power plug with wet hands.

Do not forcefully bend the power cord or place heavy objects on it to prevent it from being damaged or deformed.

Do not connect and pull out the power plug or cord repeatedly.

Unplug the product before cleaning, repairing, inspecting, or replacing parts.

Remove any dust or water from the power plug prior to plugging in.

Do not plug the product into an electrical outlet or power strip that is being used by too many other products. Use an electrical outlet adequate for the wattage of the product rated for a minimum of 15 amps.

If the power cord is damaged, do not attempt to repair, modify, or replace the cord yourself. Contact the Brondell Service Center toll free at 888-542-3355 or email us through our website.

If the product produces a strange noise, a burning smell, or emits smoke, unplug it immediately from the electrical outlet and contact Brondell. Failure to do so may result in electric shock or fire.

Do not insert any wires or sharp objects into any product gaps. This may result in electric shock, fire, or product damage.

Do not place an electronic or gas heater near the product or dispose of any burning materials such as a lit cigarette in the toilet. This may result in fire or product deformation. Do not place any containers filled with water or other liquids, food, metallic objects, or any flammable material on top of the product. If foreign material enters the product, this may result in electric shock or fire.

Important Safeguards

READ ALL INSTRUCTIONS BEFORE USING

BE CAREFUL TO KEEP THIS SAFETY INFORMATION. PLEASE READ THIS INFORMATION TO PREVENT PROPERTY LOSS AND ENSURE SAFETY.

DANGER

Failure to observe the following warnings may result in electric shock, fire, personal injury, property damage, or product damage.

Do not use the product in locations exposed to excessive moisture and do not splash water onto the product.

While cleaning the bathroom, pull the power plug out of the electrical outlet and exercise caution to ensure that water or cleaning supplies do not splash onto the bidet. Failure to do so may result in electric shock or fire.

If foreign material enters the product, pull the power plug out of the electrical outlet, turn off the main water valve, and call the Brondell Service Center.

Do not disassemble, repair, or modify the product yourself.

Do not use the product while wet from bathing or showering.

Do not place or store the product where it can fall or be pulled into a tub or sink.

Do not place in or drop the product into water or any other liquid.

Do not reach for the product if it has fallen into water. Unplug the product immediately and call the Brondell Service Center.

Do not use the product if it is not working properly. Please unplug the product immediately, close the main water supply valve, and call the Brondell Service Center at **888-542-3355**. Failure to do so may result in electric shock, fire, or flooding.

WARNING

Failure to observe the following warnings may result in electric shock, fire, personal injury, property damage, or product damage.

Do not plug in, operate, or store the unit in locations where flammable or combustible materials are used or kept.

Do not use industrial water, or gray water for the supply, as this may cause skin damage or disease.

Turn off the main water supply valve when cleaning.

For children and seniors who may have difficulties with adjusting temperatures or those with sensitive skin or impaired heat sensitivity, set the temperature of the wash spray and seat to “low” or “off” to prevent burning.

Close supervision is necessary when this product is used by children, seniors, or persons requiring general assistance.

Do not press the buttons using excessive force.

Do not stand on top of or place any heavy objects onto the seat cover.

Use this product for its intended use only, as described in this manual. Do not use any attachments that are not recommended by Brondell.

Important Safeguards

READ ALL INSTRUCTIONS BEFORE USING

BE CAREFUL TO KEEP THIS SAFETY INFORMATION. PLEASE READ THIS INFORMATION TO PREVENT PROPERTY LOSS AND ENSURE SAFETY.

WARNING

Failure to observe the following warnings may result in electric shock, fire, personal injury, property damage, or product damage.

Never operate this product if it has a damaged cord or plug, if it is not working properly, if it has been dropped or damaged, or dropped into water. Contact the Brondell Service Center for examination and repair.

Keep the cord away from heated surfaces and heating vents.

Never block the air openings of the product or place it on a soft surface, such as a bed or couch, where the air openings may be blocked. Keep the air openings free of lint, hair, etc.

Never drop or insert any object into any opening or hose.

Do not use the product outdoors or operate where aerosol (spray) products are being used, or a room where the product could be exposed to oxygen.

Connect the product to a properly grounded outlet only. Refer to the Grounding Instructions in the next pages of the manual.

CAUTION

Failure to observe the following warnings may result in electric shock, fire, personal injury, property damage, or product damage.

Do not connect the main water supply to the hot water pipe or supply (only connect to the cold water supply).

After the installation, make sure to check all water supply connections for leaks. Rubber washers should be in place for the water connection hoses & T-valve.

Do not open/close the seat or seat cover with excessive force.

Exercise caution that urine does not come into contact with the product - failure to do so may result in bad odors or malfunction.

If the product will not be used for a long period of time, unplug the power cord, close the main water supply valve, and drain any water in the water tank.

Do not pull out the bidet hose using excessive force.

Do not use thinner, benzene, acidic chemicals, chloride, or hydrochloric acid detergent on or near the product. This may result in corrosion to the metal parts or discoloration or scratches to the bidet body.

This appliance is not intended for use by persons (including children and seniors) with reduced physical, sensory, or mental capabilities, or lack of experience and knowledge, unless they have been given supervision or instruction concerning the use of the appliance by a person responsible for their safety.

Children should be supervised to ensure that they do not play with the appliance.

Important Safeguards

READ ALL INSTRUCTIONS BEFORE USING

BE CAREFUL TO KEEP THIS SAFETY INFORMATION. PLEASE READ THIS INFORMATION TO PREVENT PROPERTY LOSS AND ENSURE SAFETY.

⚠ ATTENTION ⚠

For those with certain medical or mobility issues in the bathroom, we recommend our Swash 1400 or Swash 1000 bidet seats, as their mounting systems are engineered for the most secure transitions from wheelchairs or walkers.

⚠ DANGER ⚠

Improper use of the grounding plug can result in a risk of electric shock.

If repair or replacement of the cord or plug is necessary, do not connect the grounding wire to either flat blade terminal. The wire with green insulation (either with or without a yellow stripe) is the grounding wire.

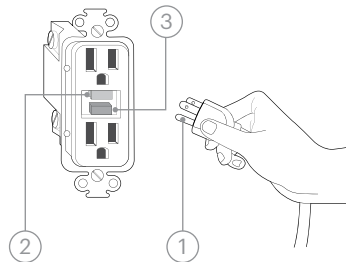
Check with a qualified electrician if the grounding instructions are not completely understood, or if there is doubt if the product is properly grounded.

GROUNDING AND GFCI OUTLET INSTRUCTIONS

This product should only be used with a grounded GFCI (Ground Fault Circuit Interrupter) outlet and a grounded three-prong electrical cord as shown to the right. In the event of an electrical short circuit, using a grounded GFCI outlet reduces the risk of electric shock.

This product is equipped with a grounded cord and is for use on a nominal 120V circuit only (minimum 15 amps) and must be plugged into an outlet that is properly grounded with a GFCI breaker as shown. Replace or repair a damaged cord immediately.

1. Grounding Pin
2. Test Button
3. Reset Button



Product Features

Stainless steel nozzle

Stainless steel resists soiling and contamination for enhanced hygiene

Rear and front warm water wash

Adjustable temperature, position, pressure, and oscillation settings

Strong wash

Concentrated stream with adjustable pressure, position, temperature, and oscillation settings

Nozzle positioning

Adjustable, 5-position nozzle ensures a comfortable and complete wash

Ceramic water heating system

Instant ceramic heating system provides an endless warm water stream for washes

Adjustable water temperature and pressure

Front, rear, and strong wash modes have 4 available water temperature settings and 5 water pressure settings

Warm air dryer

Adjustable, 5-level temperature setting for a hands-free drying experience and toilet paper reduction/elimination

Nozzle oscillation

Move function provides a massaging, oscillating cleanse during the wash cycle, ensuring a thorough and comfortable wash

Gentle wash

Activates a preset wash cycle at the softest setting for a gentle clean, followed by a drying cycle

Deodorizer

Activated charcoal deodorizing filter eliminates odors at the source

Ergonomic heated seat

Provides 4 temperature settings for comfort (off/low/medium/high)

Multicolored, illuminating nightlight

Select a preferred nightlight color to help ensure safer evening bathroom visits

Gentle-close seat and lid

Gentle-close seat and lid eliminates slamming and pinched fingers

Quick-release seat

Quick-release button for easy removal and cleaning of the seat and toilet

Nozzle cleaning

Activate for automatic or manual nozzle cleaning

Eco mode

Automatically lowers the seat temperature for energy saving when activated

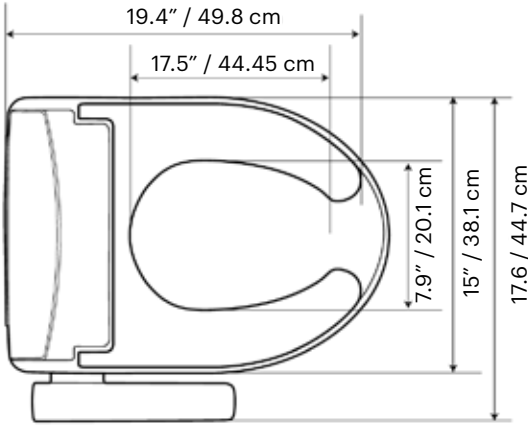
Expert mode custom settings

Personalize and change the running time of wash and dry cycles

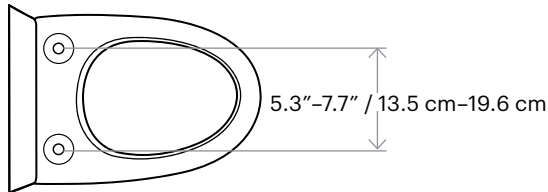
PRODUCT INFORMATION

Product Dimensions

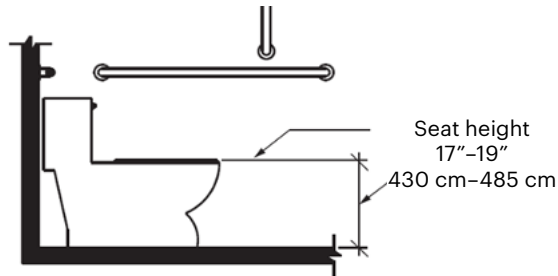
Elongated Top View



Required Distance Between Mounting Holes

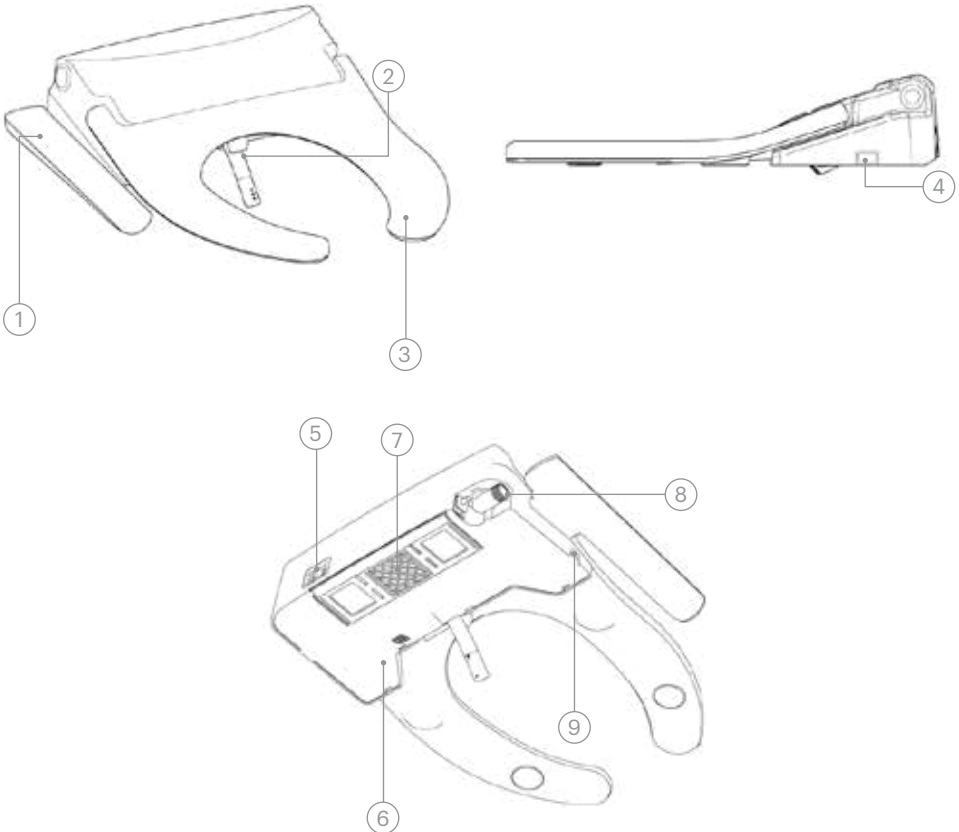


ADA Accessible Toilet Seat Height Requirements



Product Parts

- 1. Control panel
- 2. Nozzle assembly
- 3. Seat sensor area
- 4. Quick-release button
- 5. Deodorizer cover & outlet
- 6. Deodorizer inlet
- 7. Mounting plate
- 8. Water inlet with mesh filter
- 9. Nightlight



Installation Parts

1. Metal mounting bolt (2)
2. Rubber anchor (2)
3. T-valve connector with rubber washer
4. Deodorizer cover
5. Carbon deodorizer cartridge
6. Bidet hose
7. Adjustable brackets (2)
8. Mounting plate



1



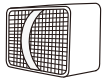
2



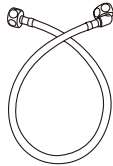
3



4



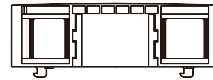
5



6



7



8

Before Installation



Do not plug the product in while the unit is upside down.
This may cause damage to the internal components.

Watch our installation video

Installation for all Swash products can be found online at brondell.com

Check bolt spread

This bidet seat can only be installed on toilets with a bolt hole spread of 5.3–7.7". (see Product Dimensions on page 8 for more information).

Check for a concealed toilet fill valve

Many modern toilets have sleek designs intended to cover and camouflage plumbing connections, which make a standard Swash installation difficult or impossible. For this, we recommend using our Alternate Swash Bidet Seat T-valve, found on brondell.com.

Check water supply line

Check the line that connects the toilet tank to the water shut off valve. If it is a rigid pipe, you may need to purchase a flexible hose to replace it before installing the Swash. The length of the hose and the size of the connectors will vary.

Residual moisture is normal

Every product is tested with pure water during production to ensure the highest quality and performance. It is normal to find a small amount of residual moisture on the product.

Tools

A Phillips head or standard screwdriver may be needed to remove the existing toilet seat and a standard wrench may be needed for tight water supply connections. Teflon tape can be helpful in creating a water-tight seal between plumbing connections.

Swash Installation

Please read these instructions carefully before installing the Swash. Failure to do so could result in flooding, leaking, or damage to the product.

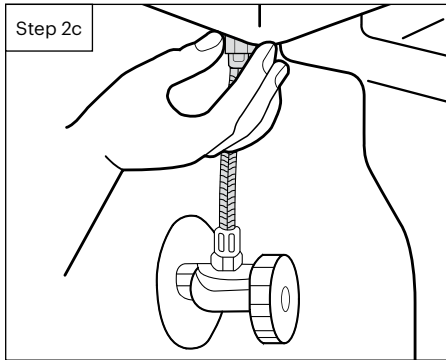
NOTE: Steps may vary by type of seat and toilet

1. Existing toilet seat removal

- Lift hinge covers and use a screwdriver to remove the mounting bolts.
- Remove the toilet seat; keep for future use.

2. Turn off water supply valve and flush toilet

- Turn water valve off to stop the flow of water.
- Flush toilet and hold down handle to completely empty tank.
- Disconnect water supply hose from toilet tank; do not disconnect from the water supply valve.



NOTES:

You may wish to place a container under the tank to catch excess water.

Do not continue without completing the above steps.

Failure to do so could result in flooding, leaking, or damage to the Swash.

3. Connect the top of the T-valve to the incoming water connection on the bottom of your toilet tank

NOTES:

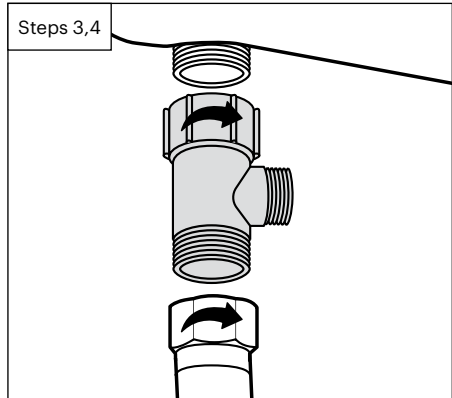
The T-valve connects to the fill valve directly under your toilet tank—it does not connect at the wall.

Check to ensure the rubber washer sits flat inside of the T-valve.

Only connect to the cold toilet water supply line.

If your water supply line is rigid you may need to replace the water supply line before continuing.

4. Connect the water supply line coming from the wall to the bottom of the T-valve

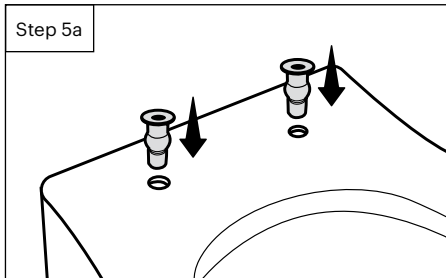


Continued following page

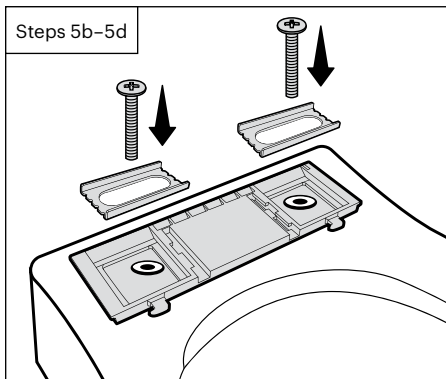
5. Installing mounting plate

- a. Wet the rubber anchors with water, squeeze the sides of the anchors, and firmly press them all the way down into the mounting holes on top of the toilet.

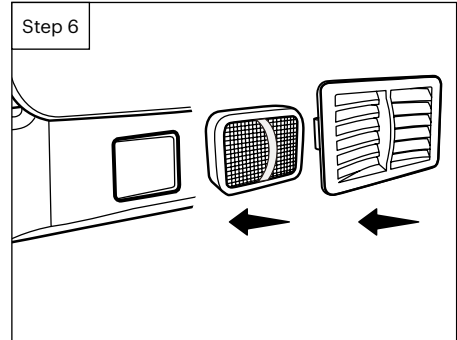
TIP: Wetting the rubber anchors will allow for easier installation. The top of the anchors should be flat to the surface.



- b. Place the mounting plate over the rubber anchors on the toilet.
- c. Place the adjustable brackets flat side down on the mounting plate over the rubber anchors.
- d. Insert the metal mounting bolts through the adjustable brackets and rubber anchors; use a Phillips screwdriver to screw in the mounting bolts and tighten.

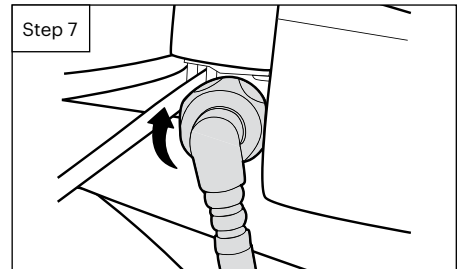


6. Insert the deodorizer cartridge into the back of the bidet body and attach the deodorizer cover until it snaps into place.



7. Connect the bidet hose to the seat

Connect the bidet hose to the water inlet and hand-tighten to secure; take care not to twist the bidet hose, excessively bend it, or strip the plastic screw threads when screwing the hose onto the bidet seat.



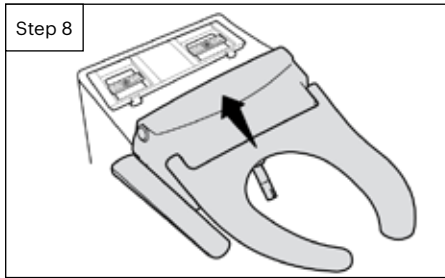
8. Attach the bidet seat to the mounting plate

- a. Set the bidet seat flat on the toilet bowl in front of the mounting plate. Slide seat forward onto plate until it clicks into place and is secure.
- b. If the seat does not align with the front edge of the toilet bowl, remove the seat by pressing the quick-release button located on the right side of the seat and slide it off the mounting plate.

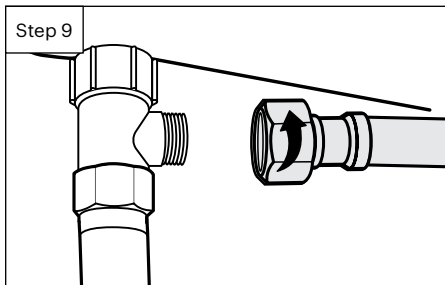
Continued following page

Swash Installation (Cont'd)

- c. Loosen the bolts and slide the mounting plate back or forth to readjust the placement; reinstall the seat and check the alignment to the edge of the toilet bowl (you may need to remove, readjust, and reinstall multiple times).
- d. When the seat is lined up properly, tighten the bolts and reinstall the bidet seat.



9. Connect the open end of the bidet hose to the T-valve



10. Turn on the water supply
- a. Open the main water supply valve slowly and check for leaks.
 - b. Wait 5 minutes, check again and, if there are no leaks, continue.
11. Plug the power cord into an electrical outlet; nozzle will extend and retract.
12. Follow instructions on page 18 for using the bidet seat

NOTES:

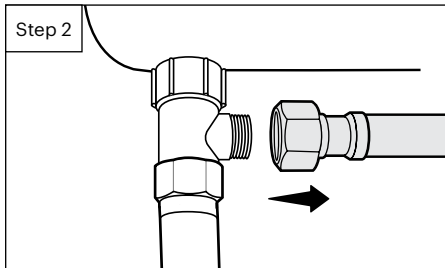
Make sure to only use a grounded GFCI (ground fault circuit interrupter) electrical outlet, as in the case of a short circuit, a grounded GFCI outlet may help prevent electric shock or injury.

If it is necessary to use an extension cord, only use those rated for a minimum of 15 amps with a 3-wire extension cord and a 3-blade grounding plug.

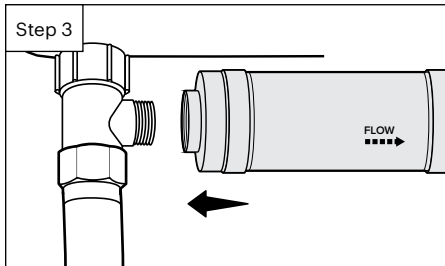
External Bidet Filter Installation (optional, not included)

NOTE: Customers with hard water, well water, and softened water can extend the life of their bidet seat by purchasing and installing an external inline water filter to be used with the bidet seat. The bidet filter should be changed every 6 months and can be purchased online at brondell.com.

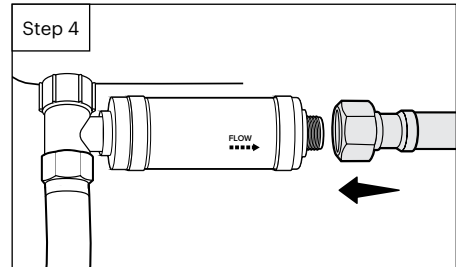
1. Turn off water supply valve and flush toilet
 - a. Turn water valve off to stop the flow of water.
 - b. Flush toilet and hold down handle to completely empty tank.
2. Disconnect the bidet hose from the T-valve



3. Connect the female end of the Swash filter to the open T-valve connection

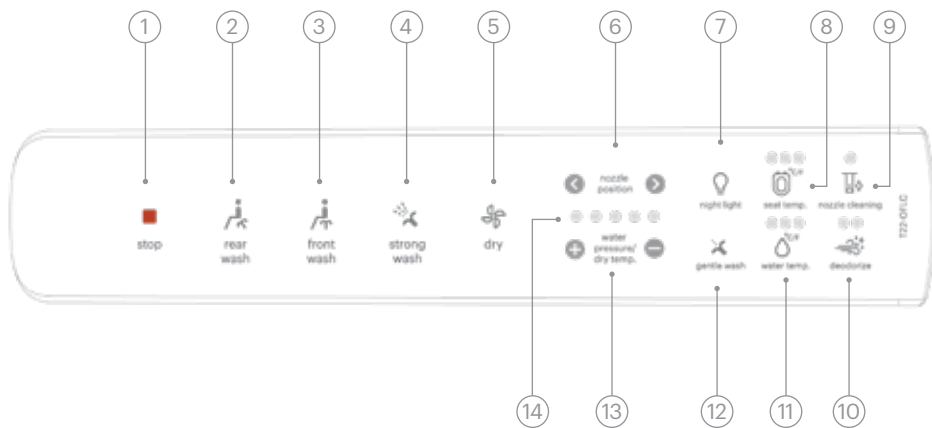


4. Connect the bidet hose to the male end of the Swash filter



5. Turn the toilet water supply valve back on

Control Panel



1. Stop Button

Stops all wash and dry functions currently operating.

2. Rear Wash / Move Button

Press once to initiate a 2-minute rear wash. Press again to initiate nozzle oscillation (repetitive forward and backward nozzle movement).

3. Front Wash / Move Button

Press once to initiate a 2-minute front wash. Press again to initiate nozzle oscillation (repetitive forward and backward nozzle movement).

4. Strong Wash / Move Button

Press once to initiate a 2-minute strong wash. Press again to initiate nozzle oscillation (repetitive forward and backward nozzle movement).

5. Dry Button

Press once to initiate a 2-minute warm air dryer cycle.

6. Nozzle Position

Press the left or right arrow to adjust the nozzle position forward and backward during a wash cycle. The 5 LED indicator lights will indicate the different positions selected.

7. Nightlight Button

Press to turn the nightlight ON/OFF and to change the color of the nightlight.

8. Seat Temperature Button and Indicator

Press to adjust the seat temperature to 1 of 4 settings (green/low: 93.2°F, yellow/medium: 98.6°F, red/high: 104°F, and OFF). Settings will be saved for the next use.

9. Nozzle Cleaning Button

Press to initiate nozzle cleaning when not sitting on the seat, or when the seat sensor is deactivated. For more nozzle maintenance instructions, see page 25.

10. Deodorizer Button

Deodorizer is defaulted to automatically turn on when seated (indicator light is ON). Press button to turn the auto deodorizer off (indicator light is OFF). See page 19 for more instructions.

11. Water Temperature Button and Indicator

Press to adjust the water temperature to 1 of 4 settings (green/low: 93.2°F, yellow/medium: 98.6°F, red/high: 104°F, and OFF). Settings will be saved for the next use.

12. Gentle Wash Button

Press to initiate a gentle wash cycle followed by a dry cycle. See page 18 for more instructions.

13. Water Pressure and Dry Temperature

Press the button + or – to adjust the water pressure during a wash cycle. Press the same button + or – to adjust the dry temperature during a dry cycle. The 5 LED indicator lights will indicate the different positions selected. Settings will be saved for the next use.

14. Five LED Indicator Lights

Indicator lights for Level 1 to Level 5 from right to left indicate nozzle position, water pressure, and dryer temperature level settings when those buttons are pressed.

Using the Swash: Getting Started

NOTE: The seat has a built-in skin conductivity sensor. The wash functions will not work unless the sensor detects someone is seated. To override the seat sensor, see instructions on page 21.

Prepare for Wash

Sit on the seat to ensure skin-to-seat contact on the seat sensor.

Warm Water Wash

When ready to wash, press the Rear Wash, Front Wash, or Strong Wash button on the control panel once to initiate a wash. The nozzle will perform a self-cleaning rinse, extend into the toilet bowl, spray for 2 minutes, turn off automatically, retract, and self-clean once again.

1. To activate the move function during a wash, press the Rear Wash, Front Wash, or Strong Wash button a second time. This will initiate the nozzle to oscillate forward and backward, providing a wider wash spray range. Press again to stop the move function.
2. While washing, users can adjust the water temperature, pressure, and nozzle position settings. See page 17 for details.
3. To stop the wash before the 2-minute cycle ends, press the Stop button to discontinue water flow.

Warm Air Dryer Function

Press the Dry button to activate the warm air dryer. The dryer will run for 2 minutes and turn off automatically.

1. While the air dryer is operating, users can adjust the dryer temperature to a comfortable level using the Dry Temp + and – button on the control panel. The dry temperature will be reflected on the 5 LED indicator lights.
2. To stop the dryer before the 2-minute cycle ends, press the Stop button.

Gentle Wash

Auto settings within the gentle wash mode are 40% softer than standard wash modes. Gentle wash will begin a wash that includes:

- full nozzle extension
- water pressure set to level 2
- front wash and oscillation for 1.5 minutes
- warm air dry cycle for 2-minutes set on level 2

NOTE: During a gentle wash cycle, water pressure and dryer settings may still be adjusted.

Special Mode Operations

Deodorizer

1. The deodorizer is defaulted to automatically turn on when seated. When the auto deodorizer is on, the deodorize indicator light is ON. After leaving the seat, it will automatically turn OFF after 1 minute.
2. To manually turn OFF the auto deodorizer, press the Deodorize button and the indicator light will turn OFF. The deodorizer will remain off until it is turned back on again by pressing the Deodorize button.

Nightlight

1. To change the nightlight color, press the Nightlight button repeatedly to cycle through and select your preferred color.
2. To turn OFF the nightlight, press and hold the Nightlight button for 3 seconds. It will beep twice to indicate it is off.
3. To turn ON the nightlight, press the Nightlight button for 1 second. It will beep once to indicate it is on.

Power ON/OFF

1. To power OFF and shut down the bidet seat, press and hold the Deodorize button for 3 seconds. The unit will make a tone and power OFF, shutting down the nightlight, seat heater, and water heater.
2. To power ON, press and hold the Deodorize button. The unit will make a tone and power ON.

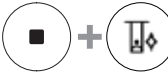
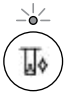


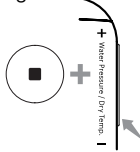
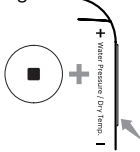




Factory Default Reset

1. Factory reset can only be performed when the seat is not occupied.
2. To reset the bidet seat back to its factory default program settings, press the Stop button 4 times within 2 seconds to clear all current programming.
3. A tone will be heard to confirm that the bidet seat has been reset.





NOTE: Factory default reset only resets programming.

Expert Mode Operations Level 1

Expert Mode Operations Level 1 allows the user to turn Eco Mode, Silent Mode, or Seat Sensor Override ON and OFF. Using the remote, follow steps 1–3 to enter, program, and exit Expert Mode Level 1.

1. Enter Expert Mode Level 1	2. Programming Expert Modes			
<p>Press/hold STOP & Nozzle Cleaning for 2 seconds.</p>  <p>Nozzle Cleaning LED starts blinking to indicate Expert Mode has been entered.</p> 	<p>Eco Mode When Eco Mode is on, the bidet seat will automatically lower the seat temperature to reduce power consumption.</p>		<p>Silent Mode When Silent Mode is on, sounds will be disabled when using the remote control.</p>	
	<p>To turn ON Eco Mode, press/hold STOP & Water Temp together.</p> 	<p>To turn OFF Eco Mode, press/hold STOP & Water Temp together.</p> 	<p>To turn ON Silent Mode, press/hold STOP & Water Pressure/ Dry Temp “-” together.</p> 	<p>To turn OFF Silent Mode, press/hold STOP & Water Pressure/ Dry Temp “-” together.</p> 
	<p>One beep will sound & yellow Deodorize light blinks to confirm.</p> 	<p>Two beeps will sound & red Deodorize light blinks to confirm.</p> 	<p>One beep will sound & yellow Deodorize light blinks to confirm.</p> 	<p>Two beeps will sound & red Deodorize light blinks to confirm.</p> 

Expert Mode Operations Level 1 (Cont'd)

2. Programming Expert Modes (cont'd)	
<p>Seat Sensor Override Seat Sensor Override bypasses the body sensor located in the seat and allows the wash and dry functions to operate without engaging skin to seat contact. Use with caution.</p>	
<p>To turn ON Seat Sensor Override (deactivate seat sensor), press/hold STOP & Seat Temp together.</p>	<p>To turn OFF Seat Sensor Override (activate seat sensor), press/hold STOP & Seat Temp together.</p>
	
<p>One beep will sound & yellow Deodorize light blinks to confirm.</p>	<p>Two beeps will sound & red Deodorize light blinks to confirm.</p>
	








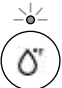








3. Exit Expert Mode Level 1
<p>Press/hold STOP & Nozzle Cleaning for 2 seconds.</p>

<p>Nozzle Cleaning LED stops blinking to indicate Special Mode has been exited.</p>
















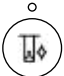

Expert Mode Operations Level 2

Expert Mode Operations Level 2 allows for customizing and changing the cycle times for Rear Wash, Front Wash, Strong Wash, Warm Air Dryer, Gentle Wash, and Gentle Wash Dry Cycle.

Custom programming must be performed in Expert Mode status with the seat sensor overridden and turned off, and with the seat unoccupied. Using the remote, follow steps 1-3 to enter, program, and exit Expert Mode Level 2.

1. Enter Expert Mode Level 2	2.Changing Cycle Times		
<p>1. Press/hold STOP & Nozzle Cleaning for 2 seconds.</p>  <p>2.Nozzle Cleaning LED starts blinking to indicate Special Mode has been entered.</p>  <p>3. Turn OFF seat sensor - place hand on right area of seat.</p>  <p>4.5 LED indicator lights turns OFF = Seat Sensor OFF.</p> 	Rear Wash (default 2 min)	Front Wash (default 2 min)	Strong Wash (default 2 min)
	<p>1. Press/hold Rear & Water Temp together.</p>  <p>2. Water Temp light blinks.</p>  <p>3. Continue to press Rear without releasing.</p>  <p>4. Press Water Temp to select new cycle time with LED light. OFF=1 min Green=2 min Yellow=3 min Red=5 min</p>  <p>5. Release to set new time.</p>	<p>1. Press/hold Front & Water Temp together.</p>  <p>2. Water Temp light blinks.</p>  <p>3. Continue to press Front without releasing.</p>  <p>4. Press Water Temp to select new cycle time with LED light. OFF=1 min Green=2 min Yellow=3 min Red=5 min</p>  <p>5. Release to set new time.</p>	<p>1. Press/hold Strong & Water Temp together.</p>  <p>2. Water Temp light blinks.</p>  <p>3. Continue to press Strong without releasing.</p>  <p>4. Press Water Temp to select new cycle time with LED light. OFF=1 min Green=2 min Yellow=3 min Red=5 min</p>  <p>5. Release to set new time.</p>

Expert Mode Operations Level 2 (Cont'd)

2.Changing Cycle Times (cont'd)			3.Exit Expert Mode Level 2
Warm Air Dryer (default 2 min)	Gentle Wash (default 1.5 min)	Gentle Wash Dry Cycle (default 2 min)	
1. Press/hold Dry & Water Temp together. 	1. Press/hold Gentle & Water Temp together. 	1. Press/hold Gentle & Seat Temp together. 	1. Turn ON seat sensor - place hand on right area of seat. 
2. Water Temp light blinks. 	2. Water Temp light blinks. 	2. Seat Temp light blinks. 	2.5 LED indicator lights turns ON = Seat Sensor ON. 
3. Continue to press Dry without releasing. 	3. Continue to press Gentle without releasing. 	3. Continue to press Gentle without releasing. 	3. Press/hold STOP & Nozzle Cleaning for 2 seconds. 
4. Press Water Temp to select new cycle time with LED light. OFF=1 min Green=2 min Yellow=3 min Red=5 min 	4. Press Water Temp to select new cycle time with LED light. OFF=30 sec Green=1 min Yellow=1.5 min Red=3 min 	4. Press Seat Temp to select new cycle time with LED light. OFF=30 sec Green=1 min Yellow=2 min Red=3 min 	4. Nozzle Cleaning LED stops blinking to indicate Expert Mode has been exited. 
5. Release to set new time.	5. Release to set new time.	5. Release to set new time.	

Seat Cleaning, Removal, & Nozzle Cleaning



Unplug the Swash from the power source before cleaning or removing the seat.

Seat Cleaning and Removal

Use a soft, damp cloth and mild cleanser (such as dish soap, Simple Green or Windex) to wipe down the seat. DO NOT scrub or use harsh, abrasive products to clean the seat. DO NOT use thinner, benzene, acidic chemicals, chloride, or hydrochloric acid detergent. This may result in corrosion to the metal parts or discoloration or scratches to the bidet body. For a more thorough cleaning, you may remove the bidet seat. To remove the seat, press the Quick Release button on the right side of the seat, and slide the seat forward off of the mounting plate and toilet.

NOTE: Be cautious of leaving home and beauty products in contact with the bidet seat, as irreversible discoloration can result. Most stains can be removed using a 1:1 mix of rubbing alcohol and water and a soft cloth or towel. However, some permanent stains are the result of substances left on the seat while the seat heater was activated. Be cautious of home and beauty products (including, but not limited to: various hair and air freshener sprays, lotions, body wash, skin tanners, body butters, and oils) that come into contact with the seat. Wash off any substances that come into contact with the seat as soon as possible. If necessary, replacement seat parts can be purchased through Brondell customer support.

Nozzle Cleaning

There are two ways to initiate nozzle cleaning:

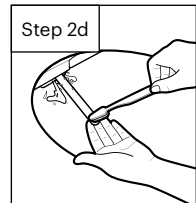
NOTE: The nozzle cleaning function will not work if the seat is occupied, or if the seat sensor has been overridden.

1. Regular cleaning

- a. Press the Nozzle Cleaning button on the control panel.
- b. Nozzle will extend into the toilet bowl and self-clean 3 times with cold water.
- c. Nozzle will retract when finished.
- d. Pressing the Stop button at any time will cancel the nozzle cleaning process.

2. Intensive cleaning

- a. Press the Nozzle Cleaning button for 3 seconds.
- b. Nozzle will extend into the toilet bowl and will self-clean 10 times with hot water.
- c. Nozzle will stop cleaning and will stay extended for 5 minutes to allow for manual cleaning.
- d. Gently clean the nozzle manually with a soft cloth or toothbrush.
- e. After 5 minutes, nozzle will perform a self-cleaning rinse 10 times before retracting.
- f. Pressing the Stop button at any time will cancel the nozzle cleaning process.
- g. Pressing the Nozzle Cleaning button during a self-clean will interrupt the process; resume self-cleaning by pressing the Nozzle Cleaning button again.

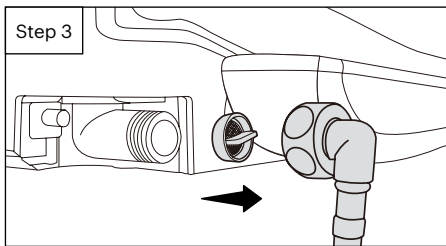


Mesh Filter and Carbon Deodorizer Cartridge

Cleaning the Mesh Filter

Cleaning intervals will differ depending on use and water quality. It is recommended to check the filter at least once per year.

1. Turn off the water supply and hold the toilet flush lever down until all water has drained from the tank.
2. Unplug the bidet seat, remove from the toilet, and disconnect the bidet hose. You may want to use a bucket to catch any dripping water from the bidet hose.
3. Remove the mesh filter from the water inlet with a pair of tweezers or needle-nosed pliers.



4. Clean the filter with a toothbrush while running it under tap water to effectively remove any foreign substances or build-up.
5. Replace the mesh filter and carefully check that it is installed correctly. Improper installation may result in the product leaking water.
6. Reconnect the bidet hose and place the seat back onto the toilet. Plug the cord back in and turn the water supply back on.

Replacing the Carbon Deodorizer Cartridge

We recommend replacing the carbon deodorizer cartridge every 6 months.

Replacements are available for purchase at brondell.com.

1. Locate the deodorizer compartment. When facing the toilet, the compartment is located at the rear, right-hand side of the unit.
2. Remove the bidet seat from the toilet by pressing the quick-release button on the right side of the bidet seat.
3. Remove the compartment cover by pulling on the plastic tab.
4. Pull out the old deodorizer cartridge from the compartment and replace it with the new cartridge.
5. Replace the compartment cover back onto the bidet seat. Replace the seat onto the toilet.

Product Storage

Short Term Non-Use

If the product will not be used for more than a few weeks, you can simply unplug it. You may also consider shutting the water supply off at the wall for extra precaution.

Long Term Non-Use

If the product will not be used for an extended time (longer than 4 months), you should unplug the unit, shut the water supply off at the wall, and remove the bidet seat from the toilet. To remove the bidet, press the quick-release button and slide the seat forward off of the mounting plate and toilet. Remove the bidet hose.

Troubleshooting

If the bidet appears to be operating abnormally, please review the troubleshooting tips before calling the Brondell Service Center, as most issues are easily resolved with a few simple steps. If you are unable to resolve the issue after checking the following items, please visit Brondell.com/Support and complete our online Support Request form or call our Customer Support team for assistance at 1-888-542-3355, Mon–Fri, 8am–2pm PST.

Check before continuing:

Make sure the bidet seat is connected to power and that the outlet is working properly.

Make sure you check & test the reset button on the GFCI outlet (Standard 120V GFCI outlet).

Make sure the main water supply valve is open.

Make sure the seat is not in standard or high-efficiency eco mode.

Confirm that there are no leaks from the hoses or water supply.

Make sure the mesh filter is clean and free of build-up or debris (see maintenance section on page 25).

After checking items above, refer to the following troubleshooting chart for additional solutions.

Problem	Possible Cause(s)	Solution(s)
The bidet seat is not working	<ol style="list-style-type: none"> 1. Bidet not plugged in 2. Water supply valve not opened fully 3. No power to bidet 4. The incoming water is too hot 5. Seat sensor is not activated 	<ol style="list-style-type: none"> 1. Make sure the bidet is plugged in 2. Check that the water supply valve at the wall is fully open 3. Check and reset GFCI outlet 4. Ensure that the bidet seat is connected to the cold-water supply 5. Adjust sitting position to fully cover the seat sensor
Product shuts off during use	<ol style="list-style-type: none"> 1. Washing time exceeded the cycle time 2. Power failure 3. Seat sensor is not activated 	<ol style="list-style-type: none"> 1. Wash cycles run for 2 minutes. Press the wash button after the wash has finished to continue the wash cycle 2. Check and reset GFCI outlet 3. Adjust sitting position to fully cover the seat sensor
Nozzle does not function properly	<ol style="list-style-type: none"> 1. Nozzle is dirty 2. Clogged filter 3. Water pressure is too low 4. External bidet filter 	<ol style="list-style-type: none"> 1. Clean the nozzle (see page 24) 2. Remove, clean, and reinstall mesh filter (see page 25) 3. Check that water supply valve at wall is fully open 4. If you have an external bidet filter, check and replace if necessary

Troubleshooting (Cont'd)

Problem	Possible Cause(s)	Solution(s)
Low water flow or spray pressure	<ol style="list-style-type: none"> 1. Clogged filter 2. Water supply valve not opened fully 3. Nozzle is dirty 4. External bidet filter 5. Pressure settings 6. Bent connection hose 	<ol style="list-style-type: none"> 1. Remove, clean, and reinstall mesh filter (see maintenance section on page 25) 2. Check that the water supply valve at wall is fully open 3. Clean the nozzle (see page 24) 4. If you have an external bidet filter, check and replace if necessary 5. Increase the water pressure settings 6. Check if connection hose is bent
Water temperature is low	Water comes out cold	The water temperature level is turned off or set to low; adjust temperature on control panel
Wash features do not work or fail to spray	Seat sensor not activated	Adjust sitting position to fully cover the seat sensor
Water (wash spray) not heated	Water temperature set to OFF	Make sure that the water temperature setting is ON
Water flows before or after use	Water coming from the nozzle	<p>The water that comes out between the nozzle before or after a wash cycle is the self-clean cycle; this is not a malfunction</p> <p>Residual water may drip into the bowl for several seconds after a wash cycle or self-clean cycle; this is not a malfunction</p>
Water leaks from areas other than the nozzle	<ol style="list-style-type: none"> 1. Water leaking from the T-valve 2. Water leaking from the bidet hose connection 3. Water leaking from under the seat 4. Damaged mesh filter 	<ol style="list-style-type: none"> 1. Make sure that the rubber gasket is inserted correctly into the T-valve (flat side down with lip pointing up towards the toilet tank connection) and firmly tighten the connector 2. Make sure that the bidet hose is correctly connected and tight, and check any rubber washers; do not over tighten 3. Check if there is anything between the mesh filter and the bidet; remove, clean, and reinstall mesh filter 4. Check if the mesh filter is damaged (see maintenance section on page 25)

Problem	Possible Cause(s)	Solution(s)
Water temp lights blinking	Water supply not connected properly	Make sure that the bidet hose is correctly connected and tight, and that water supply shut off valve is open
Seat is not heated	<ol style="list-style-type: none"> 1. Seat temperature set to OFF 2. Eco Mode is ON 	<ol style="list-style-type: none"> 1. Make sure that the seat temperature setting is turned on 2. Turn off Eco Mode
Wash or dryer works without sitting on the seat	Seat sensor override is turned on	Turn off seat sensor override

Product Specifications

SWASH THINLINE T22 BIDET TOILET SEAT WITH OPEN FRONT LESS COVER AND SIDE ARM CONTROL	
Model	T22-OFLC-EW
Power Voltage	120 V / 60 Hz
Max Power Consumption	1470 W
Supply Water Pressure	7.11 psi–106.7 psi / 0.05 MPa–0.74 MPa
Dimensions	Elongated: 20.7" x 15" x 3.9" / 52.6 cm x 38.1 cm x 9.9 cm
Weight	Elongated: 8.7 lbs / 3.9 kg
Incoming Water Temperature	50°F–89.6°F / 10°C–32°C
Mesh Filter	0.50 in / 1.27 cm (in diameter)
Seat Weight Limit	397 lbs / 180 kg
Certifications	Electrical: UL, cUL, FCC Plumbing: UPC, cUPC
WARM WATER WASHING DEVICE	
Rear Wash, Front Wash	Maximum .18 gal/min / 0.7 L/min
Strong Wash	Maximum .21 gal/min / 0.8 L/min
Default Cycle Time	2 minutes
Water Pressure Control	5 levels
Water Temperature Control	4 levels: OFF - Room Temp; Low - 93.2°F / 34°C; Medium - 98.6°F / 37°C; High - 104°F / 40°C
Max Heater Power Consumption	1400 W
Safety Devices	Thermal Fuse, Temperature Sensor, Bi-metal
HEATED SEAT	
Seat Temperature Control	4 levels: OFF - Room Temp; Low - 93.2°F / 34°C; Medium - 98.6°F / 37°C; High - 104°F / 40°C
Max Heater Power Consumption	38W
Safety Devices	Thermal Fuse, Temperature Sensor

Note: The specifications listed above are subject to change without prior notice for reasons of improving the product performance.

Warranty

Brondell products are backed by some of the most comprehensive warranties in the industry. Brondell warrants that all products (excluding consumable items) shall be free from defects in material and workmanship under normal use and service.

T22-OFLC-EW Commercial Warranty

The warranty period is 1 year from original purchase date for all Brondell products. Warranties may not apply to products that are used for heavy commercial, hospital, or other high-use non-residential applications.

Exclusions and Limitations

1. BRONDELL warrants its products to be free from manufacturing defects under normal use and service. This warranty is extended only to the ORIGINAL PURCHASER.
2. BRONDELL's obligations under this warranty are limited to repairs or replacement, at BRONDELL's option, of products or parts found to be defective, provided that such products were properly installed and used in accordance with instructions. BRONDELL reserves the right to make such inspections as may be necessary to determine the cause of the defect. BRONDELL will not charge for labor or parts in connection with warranty repairs for the first year from date of purchase on all products except those that may be subject to commercial use limitations.
3. BRONDELL is not responsible for the cost of removal, return (shipping) and/or re-installation of products. This warranty does NOT apply to:
 - Damage or loss which occurs during shipment.
 - Damage or loss sustained through any natural or man-made causes beyond the control of BRONDELL, including but not limited to fire, earthquake, floods, etc.
 - Damage or loss resulting from sediments or foreign matter contained in a water system.
 - Damage or loss resulting from negligent or improper installation including installation of a unit in a harsh or hazardous environment.
 - Damage or loss resulting from removal, improper repair, modification of the product, or improper maintenance including damage caused by chlorine or chlorine-related products.
 - Damage or loss resulting from electrical surges, electrical outages, lightning strikes, or other acts which are not the fault of BRONDELL, or which the product is not specified to tolerate.
4. This warranty gives you specific legal rights. You may have other rights which vary from state to state.

THIS WRITTEN WARRANTY IS THE ONLY WARRANTY MADE BY BRONDELL. REPAIR OR REPLACEMENT AS PROVIDED UNDER THIS WARRANTY SHALL BE THE EXCLUSIVE REMEDY AVAILABLE TO THE PURCHASER. BRONDELL SHALL NOT BE RESPONSIBLE FOR LOSS OF USE OF THE PRODUCT OR FOR OTHER INCIDENTAL, SPECIAL, FOR CONSEQUENTIAL DAMAGES OR EXPENSES INCURRED BY THE PURCHASER OR FOR LABOR OR OTHER COSTS DUE TO INSTALLATION OR REMOVAL OR COSTS OF REPAIRS BY OTHERS, OR FOR ANY OTHER EXPENSE NOT SPECIFICALLY STATED ABOVE. EXCEPT TO THE EXTENT PROHIBITED BY APPLICABLE LAW, ANY IMPLIED WARRANTIES, INCLUDING THAT OF MERCHANTABILITY, ARE EXPRESSLY LIMITED TO THE DURATION OF THIS WARRANTY. SOME STATES DO NOT ALLOW LIMITATIONS, SO THE ABOVE LIMITATION AND EXCLUSION MAY NOT APPLY TO YOU.

How to Obtain Service

To initiate a Brondell Warranty Claim, please visit Brondell.com/Support and complete our online Support Request form or call our Customer Support team for assistance at 1-888-542-3355, Mon – Fri, 8am – 2pm PST. Our dedicated Customer Support specialists will work with you to troubleshoot the issue, and depending on the results, will provide you with a Return Merchandise Authorization (RMA) number and a pre-paid shipping label, if applicable, for you to ship your Brondell product to our Service Center.

When returning your item to our Service Center, please ensure to include the RMA number and a copy of the original receipt as proof of purchase for proper identification and processing.

Brondell

Feels better already.

Brondell, Inc.
PO Box 470085
San Francisco, CA
94147-0085
support@brondell.com
www.brondell.com

For questions, contact:

Brondell Customer Service: 1-888-542-3355
Monday – Friday, 8a.m. – 2p.m. PST

Manufactured by

Brondell, Inc.
PO Box 470085
San Francisco, CA
94147-0085

Made in Korea

**Please retain receipt records
for any warranty claims.**

Brondell

Feels better already.

#23T22OFLC-0420_CERT