

# Braeburn®

## 1200NC

Up to 2 Heat / 1 Cool Conventional  
Up to 2 Heat / 1 Cool Heat Pump  
**Non-Programmable Thermostat**



ACTUAL SIZE

**2** YEAR  
LIMITED  
WARRANTY

### Features

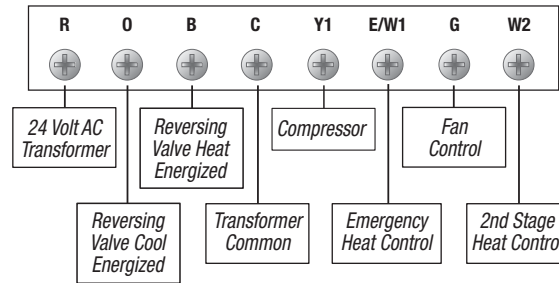
- Bright Blue Display Backlight
- Adjustable Temperature Limits
- Hardwire or Battery Powered
- Permanent Memory Retains All Settings
- Compressor Short Cycle Protection
- Separate O & B Terminals
- Adjustable Temperature Differentials
- Low Battery Indication
- Separate Heating and Cooling Set Point Temperatures
- Auxiliary Heat Indicator
- ESD Guard™ Electronic Circuitry
- Front Access Reset Button
- F° / C° Switch
- Mount to Horizontal Box
- Easy Access Front Battery Door

**BUILDER  
SERIES**

**FREE Contractor Branding! Visit [braeburnonline.com](http://braeburnonline.com)**

Toll-Free 866.268.5599 (U.S.) +1.630.844.1968 (Outside the U.S.)

## Terminal Designations



## Architectural Specifications

The digital non-programmable thermostat shall be a Braeburn® model number 1200NC, 3.72" high x 4.75" wide x 1.12" deep, powered independently with either 24 VAC or two "AA" Alkaline batteries (3.0 Volt DC). The thermostat shall be compatible with multi-stage conventional or heat pump systems with up to two stages of heating and one stage of cooling. The thermostat shall have a bright blue backlight display, front loading battery door and separate sub-base for trouble free installation. Temperature control range shall be between 45° and 90° F (7° and 32° C), accuracy of +/- 1° F (+/- .5° C), humidity range between 5% and 95% relative humidity. The thermostat shall include non-volatile memory to retain user settings, adjustable temperature limits and auxiliary heat indicator. Thermostat shall have low battery indication and a front reset button will return user settings to default values when pressed. The thermostat can be mounted to a horizontal junction box.

## Product Specifications

<b>Dimensions:</b>	3.72" x 4.75" x 1.12"
<b>Electric Rating:</b>	24 Volt AC (18-30 Volt AC) 1 amp maximum load per terminal 4 amp total maximum load (all terminals)
<b>AC Power:</b>	18-30 Volt AC
<b>DC Power:</b>	3.0 Volts DC (2 "AA" Alkaline batteries included)
<b>Compatibility:</b>	Conventional systems up to two stages of heating and one stage of cooling; Heat pump systems with one compressor and up to one auxiliary stage; 250mv - 750mv millivolt heating systems
<b>Control Range:</b>	45° to 90° F (7° to 32° C)
<b>Display Range:</b>	40° to 99° F (5° to 37° C)
<b>Accuracy:</b>	+/- 1° F (+/- .5° C)
<b>Temperature Differential:</b>	1st Stage - .5°, 1°, or 2° F (.25°, .5°, or 1° C) 2nd Stage - 2°, 3°, 4°, 5°, or 6° F (1°, 1.5°, 2°, 2.5°, or 3° C)
<b>Storage Temperature:</b>	14° to 140° F (-10° to 60° C)
<b>Operating Humidity:</b>	5% to 95% Relative Humidity
<b>Terminations:</b>	R, O, B, C, Y1, E/W1, G, W2

## Shipping Information

<b>INDIVIDUAL CARTON</b>	<b>MASTER CARTON</b>
<b>Dimensions:</b> 3.75" x 5.5" x 1.4"	<b>Quantity:</b> 12
<b>Weight:</b> .45 lbs.	<b>Dimensions:</b> 9" x 4.25" x 11.5"
	<b>Cubic Feet:</b> .25
	<b>Weight:</b> 5.7 lbs.

## Braeburn 1200NC Replaces\*

<b>Honeywell®</b>	TH2210, Y594, T841, T8411, T8424
<b>White-Rodgers®</b>	1F58, 1F59-11, 1F74-174, 1F79-111
<small>*Verify specific application requirements. All trademarks are the property of their respective owners.</small>	

## Accessories

2950 Universal Wall Plate (6.5" x 6.5" x .125")
5970 Universal Thermostat Guard

## FREE Contractor Branding Available!

Visit our website ([www.braeburnonline.com](http://www.braeburnonline.com)) for more information, contact your local distributor or call our sales department toll-free at 866.268.5599 (U.S.), +1.630.844.1968 (Outside the U.S.).

**Date:** \_\_\_\_\_  
**Job Name:** \_\_\_\_\_  
**Location:** \_\_\_\_\_  
**Contractor:** \_\_\_\_\_

**Engineer:** \_\_\_\_\_  
**Model No.:** \_\_\_\_\_  
**Submitted By:** \_\_\_\_\_  
**Submitted For Approval:** \_\_\_\_\_ **Record:** \_\_\_\_\_