

en-us Use and care manual

**Washer**  
**WAP24201UC**



Register your new Bosch now:  
[www.bosch-home.com/welcome](http://www.bosch-home.com/welcome)



**Welcome to Your New Washer!**

Congratulations on your selection of a new Bosch washer for your laundry needs. We are confident you will enjoy the superior performance and reliability.

Please do not hesitate to contact our Customer Service department if you have any questions or comments with your new washer.

Thank you for choosing Bosch.

Visit our web site at [www.bosch-home.com/us](http://www.bosch-home.com/us) for more information and to view a selection of our products.

# Table of contents

<b>Important information</b> .....	<b>4</b>	<b>Operating Instructions</b> .....	<b>22</b>
Purchase information .....	4	Before doing any laundry with your washing machine .....	22
Customer service .....	4	Before loading your first load of laundry .....	22
<b>Your washing machine is intended for</b> .....	<b>5</b>	Using the cycle selector to choose a wash cycle .....	22
<b>Importance and meaning of symbols</b> .....	<b>5</b>	Changing default cycle settings .....	22
<b>IMPORTANT SAFETY INSTRUCTIONS</b> .....	<b>6</b>	Selecting additional cycle settings .....	22
<b>Introduction to your new washer</b> .....	<b>7</b>	Loading the laundry .....	22
Standard features and helpful information .....	7	Filling the detergent and additives compartments .....	23
Special features .....	7	Starting the cycle .....	24
Environmentally friendly use of your washer .....	8	Child lock .....	24
<b>Dimensions and clearances required</b> .....	<b>8</b>	Selecting a different cycle .....	24
Appliance dimensions .....	8	Pausing/Continuing the cycle .....	24
Length of power cord and water supply hoses .....	8	Cancel cycle .....	24
Installation types .....	8	Cycle end with rinse stop .....	24
<b>Installation instructions</b> .....	<b>10</b>	Cycle end .....	24
Introduction .....	10	Removing laundry/switching the appliance off .....	24
Tools needed .....	10	<b>Signal</b> .....	<b>25</b>
Waste disposal .....	10	<b>Cleaning and maintenance</b> .....	<b>26</b>
Parts provided with your washer .....	11	Cleaning the housing and control panel .....	26
Set up on a pedestal with drawer .....	11	Cleaning the drum .....	26
Installation checklist .....	11	Descaling the washer .....	26
Importance of installing on a solid, level floor .....	11	Cleaning the detergent dispenser .....	26
Remove the transport bolts .....	12	Cleaning the water inlet strainers .....	26
Water connections .....	12	Cleaning the drain pump .....	27
Leveling the washer .....	14	<b>Troubleshooting</b> .....	<b>29</b>
Electrical connection .....	14	Emergency door lock release .....	29
Transporting the washer .....	15	Troubleshooting .....	29
<b>Getting to know your appliance</b> .....	<b>16</b>	Error messages .....	32
Control panel .....	16	<b>Customer service</b> .....	<b>32</b>
Display field .....	16	<b>STATEMENT OF LIMITED PRODUCT WARRANTY</b> ...	<b>33</b>
<b>Laundry</b> .....	<b>17</b>	Bosch Clothes Washer .....	33
Preparing the laundry .....	17		
Sorting the Laundry .....	17		
Identifying and treating stains .....	17		
<b>Laundry detergents and additives</b> .....	<b>18</b>		
Adding the correct amount of HE detergent .....	18		
<b>Cycle selection table</b> .....	<b>19</b>		
Starching .....	20		
Dyeing/bleaching .....	20		
Soaking .....	20		
<b>Default cycle settings</b> .....	<b>21</b>		
Changing the temperature range .....	21		
Changing the spin speed range .....	21		
Delay Start .....	21		
<b>Additional program settings</b> .....	<b>21</b>		
Extra Rinse .....	21		
Easy Iron .....	21		
Prewash/Pre Treat .....	21		

Additional information on products, accessories, replacement parts and services can be found at [www.bosch-home.com](http://www.bosch-home.com) and in the online shop [www.bosch-eshop.com](http://www.bosch-eshop.com)

Questions?  
1-800-944-2904  
[www.bosch-home.com](http://www.bosch-home.com)  
1901 Main Street, Suite 600  
Irvine, CA 92614

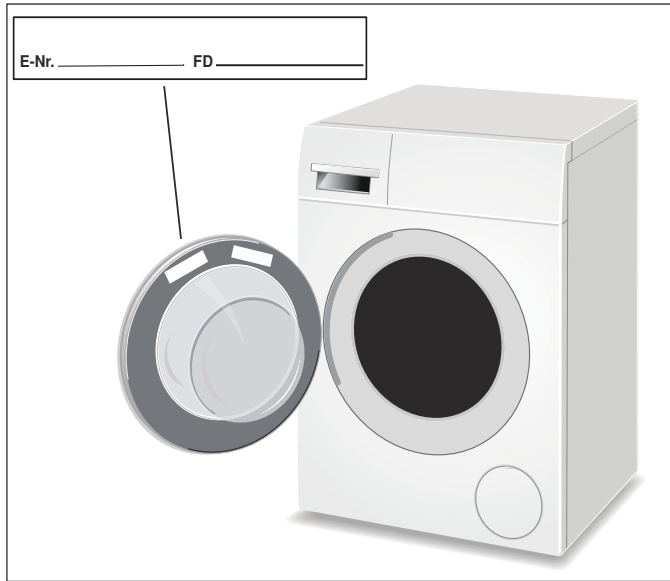
We look forward to hearing from you!

# Important information

## Purchase information

Please take a moment to record the following basic information about your new Bosch washer.

This information will be helpful in the event you need to contact Customer Service or would like to order accessories or replacement parts.



The **E-Nr.** (model number) and the **FD** (serial) number are found on the rating plate label.

*see illustration*

The model number includes the slash and a two digit number (eg: "/27"). Please be sure to include the final 2 digit number when filling in your model number. This helps make sure any parts you may need are correctly matched to your specific machine.

Date of Purchase: \_\_\_/\_\_\_/\_\_\_

Where Purchased: \_\_\_\_\_

**E-Nr.** : \_\_\_\_\_/\_\_\_\_ (ex: WFVC5330US/27)

**FD** : \_\_\_\_\_ - \_\_\_\_\_ (ex: FD 9005| 90001)

## Customer service

Your washer does not require any special care other than the maintenance and care mentioned in this manual. If you have a problem with your washer, please consult

→ *Troubleshooting; Page 29*

This may save you money. If a technician comes out to advise you of information that is in the Troubleshooting table you may be charged, even if your washer is still under warranty.

If service becomes necessary, contact your dealer or installer or an authorized service center. Do not attempt to repair the appliance yourself. Any work performed by unauthorized personnel may void the warranty.

If you are having a problem with your washing machine and are not pleased with the service you have received, please follow these steps:

1. Contact your installer or the Authorized Service Contractor in your area and explain to them why you are not satisfied. This will usually correct the problem.
2. If after working with your installer or service technician the problem still has not been resolved to your satisfaction, please let us know either by writing to us at:

BSH Home Appliances  
1901 Mainstreet, Suite 600  
Irvine, CA 92614

or calling us at:  
1-800-944-2904

When writing or calling please have the following information available:

- E-Nr. (model number, example: WTVC3300UC/27)
- FD (serial) number
- Date of Original Purchase (receipt required)
- Date Problem Occurred
- Explanation of Problem

If writing, please also include a daytime telephone number and a copy of the sales invoice.

When calling Customer Service, please be ready to provide the model number **E-Nr.** and **FD** (serial) number. This information will help provide the best support for your washer.

Additional information is available at our website.

[www.bosch-home.com/us](http://www.bosch-home.com/us)

---

## Your washing machine is intended for

- Only household use and in a non-commercial environment.
- Household use only washing machine-washable textiles
- Washing with common cold and hot (maximum 140 °F/60 °C) tap water and commercially available detergents and cleaning products suitable for use in washing machines.
- **We recommended HE (High efficiency) detergents because they are designed to deliver optimum performance from your front-loading washer. Not using HE detergent could cause problems such as oversudsing, extended cycle periods, or a decrease in wash performance.**
- The washer can be operated by people with reduced physical, sensory or mental capabilities, and by people with little experience or knowledge if they **are supervised** or **were trained** by a responsible person.
- Children may not do any laundry without supervision.
- Keep pets away from the washer.
- Set-up conditions:  
Ambient temperature: 32-104 °F/0-40 °C  
Relative humidity: under 95%
- Installation by qualified installers.
- Installation in accordance with all regulatory requirements; if in doubt have the appliance installed by a specialist familiar with these requirements.

**NOTICE:** Do not use chlorine bleach!

- When measuring all detergents/stain removers/laundry care products be sure to follow the manufacturer's instructions.

Read the use and set-up instructions and all other information included with the washer and act accordingly.

Keep documents for future use.

---

## Importance and meaning of symbols

Important safety information is contained in this manual and on the warning labels located on your washer.

Standard symbols and headings are used to identify areas where you should take precautions to avoid injury or damage. Please take a moment to become familiar with each of these symbols and what they mean before proceeding.

---

### **▲ WARNING**

---

#### WARNING

This indicates that death or serious injuries may occur as a result of non-observance of this warning.

---

---

### **▲ CAUTION**

---

#### CAUTION

This indicates that minor or moderate injuries may occur as a result of non-observance of this warning.

---

**NOTICE:** This indicates that damage to the appliance or property may occur as a result of non-observance of this warning.

**Tip:** This symbol is used to draw the user's attention to important matters.



# **IMPORTANT SAFETY INSTRUCTIONS**

## READ AND SAVE THESE INSTRUCTIONS

---

### **WARNING**

---

When properly cared for, your new appliance has been designed to be safe and reliable. Read all instructions carefully before use. These precautions will reduce the risk of burns, electric shock, fire, and injury to persons. When using appliances, basic safety precautions must be followed, including those in the following pages.

---

Examine the appliance after unpacking it. In the event of transport damage, do not plug it in.

---

### **WARNING**

---

TO REDUCE THE RISK OF FIRE, ELECTRIC SHOCK, SERIOUS INJURY OR DEATH WHEN USING YOUR WASHING MACHINE, FOLLOW BASIC PRECAUTIONS INCLUDING THE FOLLOWING

- Bosch washers are provided with an Operating, Care and Installation Instruction manual. Read and understand all instructions before using the washing machine.
  - Do not wash articles that have been previously cleaned, washed, soaked, or spotted with gasoline, dry cleaning solvents, other flammable or explosive substances as they give off vapors that could ignite or explode.
  - Do not add gasoline, dry cleaning solvents, or other flammable or explosive substances to the wash water. These substances give off vapors that could ignite or explode.
  - Under certain conditions hydrogen gas may be produced in a hot water system that has not been used for 2 weeks or more. **HYDROGEN GAS IS EXPLOSIVE.** If the hot water system has not been used for this length of time, turn on all hot water faucets and let the water flow out of each faucet for several minutes before using the washing machine. This will release any accumulated hydrogen gas. As the gas is flammable, do not smoke or use an open flame while carrying out this procedure.
  - Before the appliance is removed from service or discarded, remove the door to prevent children from playing or hiding inside. Also remove the power cord/plug.
  - Do not allow anyone to climb, lean or hang on any part of the washer including any protruding components such as the appliance door or a pullout shelf.
  - Use caution when draining hot water from the washer drum such as during pump maintenance or when using the emergency door open procedure.
  - Do not reach into the appliance if the wash drum is moving.
  - Do not tamper with the controls.
  - Do not repair or replace any part of the appliance or attempt any service unless specifically recommended in the user manual or in published user repair instructions that you understand and have the skills to carry out.
- Always unplug the washing machine from the power supply before attempting any service. Disconnect the power cord by grasping the plug, not the cord.
  - Do not machine wash fiberglass materials (such as curtains and window coverings that use fiberglass materials). Small particles may remain in the washing machine and stick to fabrics in subsequent wash loads causing skin irritation.
  - Do not install or store the washer where it will be exposed to the weather. Hoses and internal parts may be damaged if exposed to freezing temperatures.
  - Do not use the washing machine if it has a worn power cord or loose plug.
  - The washing machine must only be used for its intended purpose.
  - Always follow the fabric care instructions recommended by the clothing manufacturer.
  - Make sure all water connections to the washing machine have shut-off valves that are readily accessible during normal operation of the washer. Turn off both valves during periods in which the washer is not in use and before leaving for extended periods such as vacations to reduce the risk of water damage in the event of a leak. Turn the valves back on prior to resuming use of the washer.
  - Do not operate the washing machine if parts are missing or broken.
  - Do not operate the washing machine until you are sure that:
    - the washing machine has been installed according to the Installation Instructions.
    - all water, drain, power and grounding connections are in compliance with all local regulations and/or other applicable regulations and requirements.
  - See the installation instructions in this manual for grounding requirements.  
→ *Electrical connection; Page 14*
-

# ⚠ IMPORTANT SAFETY INSTRUCTIONS

## READ AND SAVE THESE INSTRUCTIONS

---

### WARNING

---

#### WARNINGS FOR CHILDREN

- Do not allow children to play on or in the appliance. Close supervision of children is necessary when the appliance is used near children.
  - Make sure to utilize all child lock/safety features of your appliance, and be sure to turn the appliance **Off** when not in use.
  - Appliances are not intended for use by children, however when children become old enough to operate the appliance, it is the responsibility of the parents or legal guardians to ensure they are instructed in safe practices by qualified persons.
  - Keep all laundry aids (including detergents, bleach, fabric softener, etc.) out of the reach of children.
- 

---

### WARNING

---

#### STATE OF CALIFORNIA PROPOSITION 65 WARNINGS

This product contains chemicals known to the State of California to cause cancer, birth defects or other reproductive harm.

---

#### SAVE THESE INSTRUCTIONS!

Keep These Instructions for Future Reference

In case of change of ownership, manual should be conveyed with the washer.

---

## Introduction to your new washer

---

### ⚠ WARNING

---

#### RISK OF FIRE, ELECTRIC SHOCK OR INJURY

To reduce the risk of fire, electric shock or injury to persons, read the IMPORTANT SAFETY INSTRUCTIONS of this manual before installing or operating this appliance.

→ *IMPORTANT SAFETY INSTRUCTIONS; Page 6*

---

### Web Site

Visit our web site at [www.bosch-home.com/us](http://www.bosch-home.com/us) for more information and to view a selection of our products.

### About this manual

These operating and installation instructions may apply to more than one model of washer. Illustrations used may show details that differ from your particular model. Read your user manual. It contains valuable information about safety, installation and operation of your new appliance.

This can save you time, make it easier to correctly install and use your washer, and improve your overall satisfaction with your new appliance.

### Special features

- Load adjust matches the water and power consumption to each cycle according to the amount of laundry sensed in the drum and the type of fabric. The load adjust function runs automatically to keep energy and water consumption as low as possible. The water level sensor ensures the water level is correct for the laundry and the cycle selected.
- The automatic unbalanced load detection system spins the laundry several times to ensure even distribution. If the laundry is unevenly distributed, the spin speed is reduced, or the laundry may not be spun for reasons of safety. In the Wool cycle, the spin cycle is attempted only twice in order to prevent felting.

## Standard features and helpful information

### Thank you for choosing Bosch for your laundry appliance needs.

Please read and follow the use & care, important safety instructions and troubleshooting information contained in this manual. Please retain this manual for future reference.

### Standard features

- 17.7 lb (8 kg) large drum capacity (for regular cotton loads).
- Low washing and spinning noise levels.
- Large door opening featuring magnetic lock, 180° opening angle.

### Quality tested

Every Bosch washer is thoroughly tested before leaving the factory. As a result, a small amount of residual water may remain in the washer drum. We recommend running the **Maintenance** cycle to remove this water prior to washing your first load of laundry.

→ *Before loading your first load of laundry; Page 22*

## Environmentally friendly use of your washer

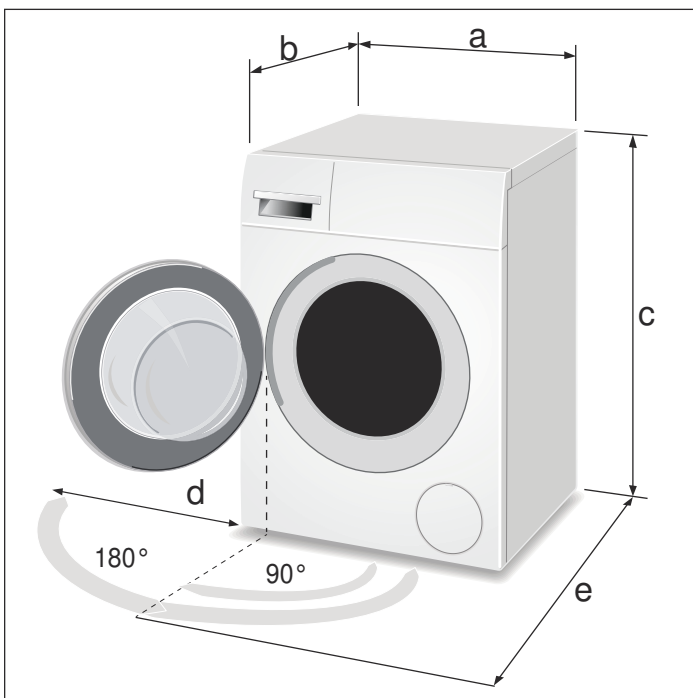
Your new Bosch washing machine is designed to use water, energy and detergent in a highly efficient way to help reduce operating costs, conserve resources and protect the environment.

- Utilize the maximum amount of laundry for the appropriate cycle.
- Avoid using too much detergent.
- Wash normally soiled laundry without a prewash.

- Save energy and detergent when washing lightly and normally soiled laundry.
- **Energy-saving mode:** The display panel lighting goes out after a few minutes and **Start/Pause** flashes. To activate the display, press any button. Energy-saving mode is not activated if a program is running.
- If the laundry will be dried in a dryer afterwards, select spin speed according to the dryer manufacturer's instruction.

## Dimensions and clearances required

### Appliance dimensions



Label	Dimension	U.S.	Metric
a	width	23.6 in.	60 cm
b	depth (to front of door)	25 in.	64 cm
c	height (minimum*)	33.2 in.	85 cm
	height (maximum*)	33.8 in.	86 cm
d	side clearance (door open 180°)	15.8 in.	40 cm
e	depth (door open 90°)	42.5 in.	108 cm
Weight	approximate	169.8 lbs.	77.2 kg

\* height of appliance depends on the extension of the height adjustable appliance feet.

### Length of power cord and water supply hoses

	To left of washer*		To right of washer*	
	U.S.	Metric	U.S.	Metric
Electric power cord	51 in.	130 cm	47 in.	119 cm
Water supply hoses	53 in.	135 cm	33 in.	84 cm
Drain Hose	37 in.	94 cm	55 in.	140 cm

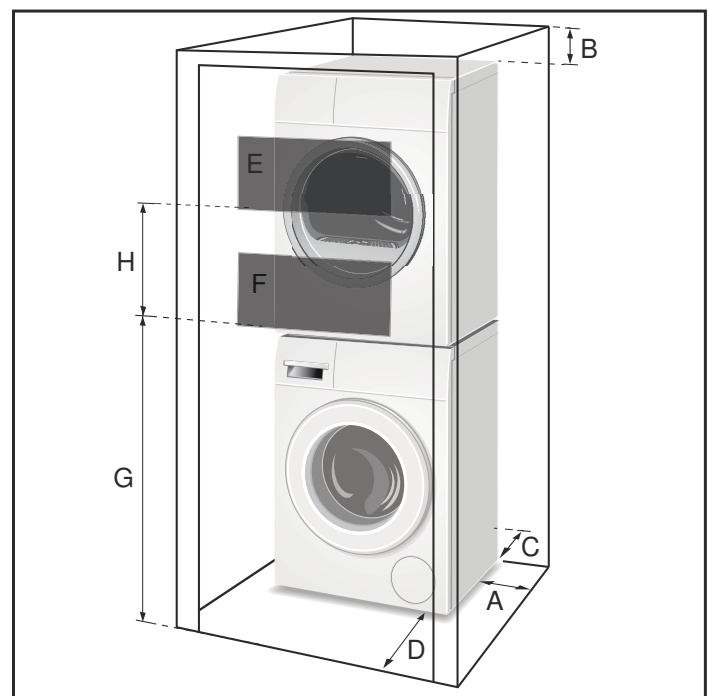
\* Facing the front of the washer

### Installation types

#### Stacked washer and dryer

A Bosch dryer of the same dimensions can be placed on top of the washer to save space.

Use the special washer-dryer sets which can be obtained from customer service or your local dealer (see the dryer user manual).





**Clearance requirements (Minimum)**

A	Both Sides	0.6 in.	1.5 cm
B	Top	6.3 in.	16 cm
C	Rear*	3.2 in.	8 cm
D	Front	3.4 in.	8.5 cm

\* Rear clearance as close to wall as venting or water connection will allow. If the washer is installed with a dryer, the greater rear clearance for the dryer venting is required for the laundry pair.

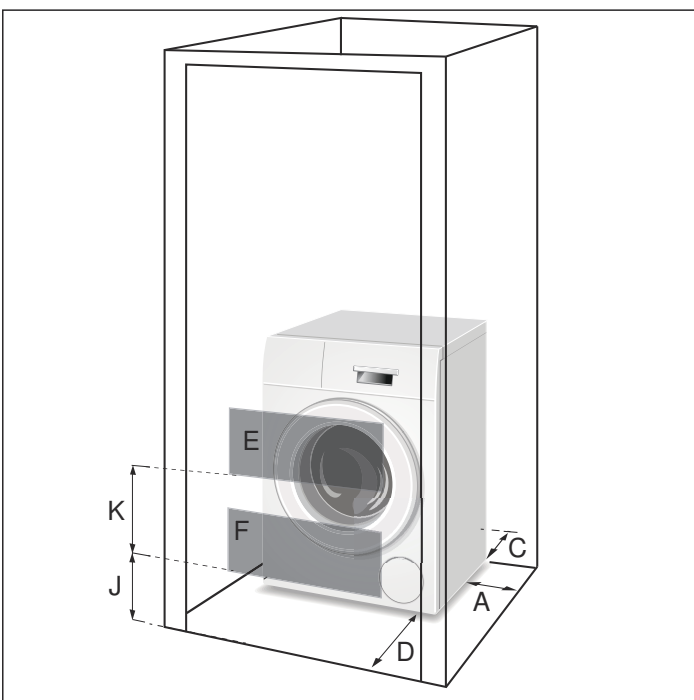
**Ventilation area (Minimum)**

E	Top	63 sq. in.	404 sq. cm
F	Bottom	63 sq. in.	404 sq. cm

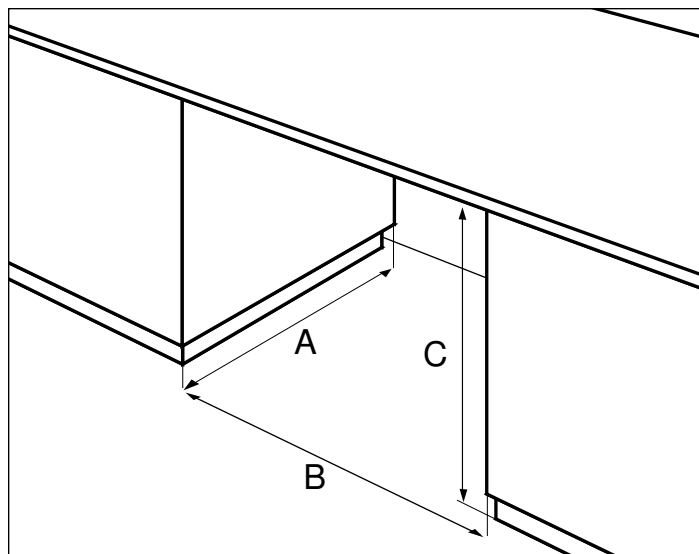
**Vent spacing (actual not minimum dimensions)**

G	37 in.	94 cm
H	26 in.	66 cm
J	3 in.	7.6 cm
K	29 in.	73 cm

**Stand alone (shown) or Side-by-Side**



**Under counter (Preferred)**

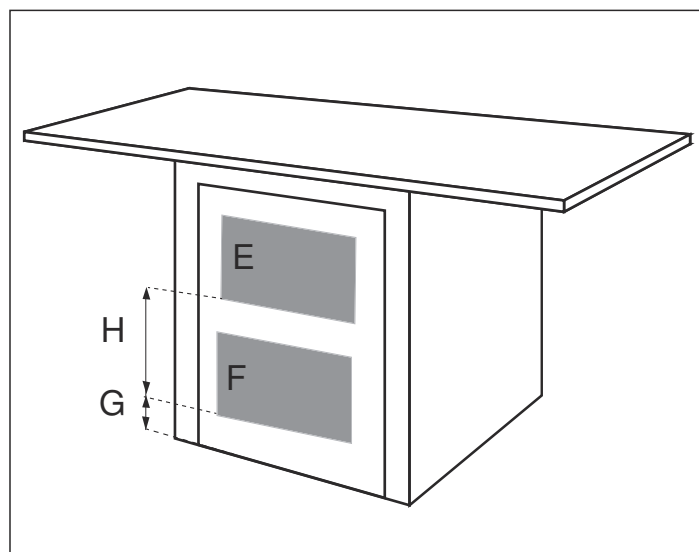


Front of the appliance fully open.  
No doors or coverings.

**Minimum opening dimensions**

A	23.8 in.	60.5 cm
B	23.8 in.	60.5 cm
C	33.5 in.	85 cm

**Under counter (Less Desirable)**



If front of the appliance is covered ventilation openings must be installed.

E & F are minimum area sizes

E	63 sq.in.	404 sq.cm
F	63 sq.in.	404 sq.cm

G & H

actual spacing dimensions for min. open area sizes

G	3 in.	7.6 cm
H	14 in.	35.6 cm

# Installation instructions

---

## ▲ WARNING

RISK OF FIRE, ELECTRICAL SHOCK OR INJURY TO PERSONS

To reduce the risk of fire, electric shock or injury to persons, read the Important Safety Instructions at the front of this manual before installing or operating this appliance.

---

---

## ▲ CAUTION

WASHING MACHINE IS HEAVY

Use additional help and care when lifting and positioning.

---

## Introduction

Read these installation instructions completely and carefully before starting to install your new washing machine. The information contained can save you time and effort and will help to ensure optimum performance of your new washer. Be sure to observe all warnings and cautions.

### NOTICES

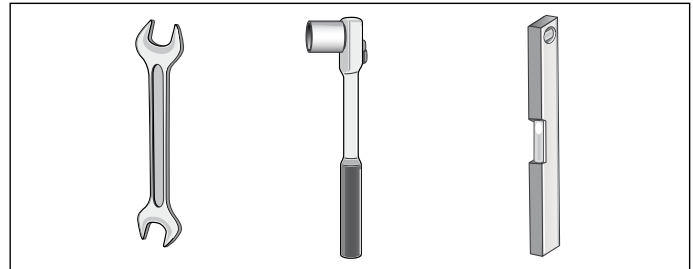
- Frozen hoses can tear or burst. Do not install the washing machine outdoors or in an area exposed to freezing conditions.
- If the washing machine is located in a room which will be exposed to temperatures below freezing, or if it is located in a cabin that is being shut down for the winter, any residual water in the pump or water inlet hose(s) must be drained.
- Take care not to damage the washing machine. Do not hold on to protruding parts (e.g. door) when lifting.
- In addition to the safety information listed here, the local water and electricity supplier may have special requirements.
- If in doubt, have the appliance connected by an authorized technician.

These installation instructions are intended for use by qualified installers. In addition to these instructions, the installation must comply with:

- for the United States - National Electrical Code, ANSI/NFPA70 - and latest editions of the State and municipal and/or local regulations.
- for Canada - Canadian Electrical Code C22.1 - and the latest editions of the Provincial, Municipal and/or local regulations.

## Tools needed

The following tools may be helpful during installation of your washer.



- 13mm socket for removing the transport bolts.
- 17mm wrench for adjusting the appliance feet.
- Bubble level for leveling the appliance.

## Waste disposal

### Disposal of Packaging Materials

After unpacking your new appliance dispose of the protective packaging materials in an environmentally friendly way. Ask your dealer or inquire with your local authority regarding currently acceptable means of disposal.

---

## ▲ WARNING

WARNINGS FOR CHILDREN

Do not let children play with packaging and associated parts to avoid risk of choking or suffocation.

---

### Disposal of Your Old Appliance

Your old appliance can be recycled if it is no longer to be used. Prior to disposing of your old appliance observe the following precautions to reduce safety risks.

---

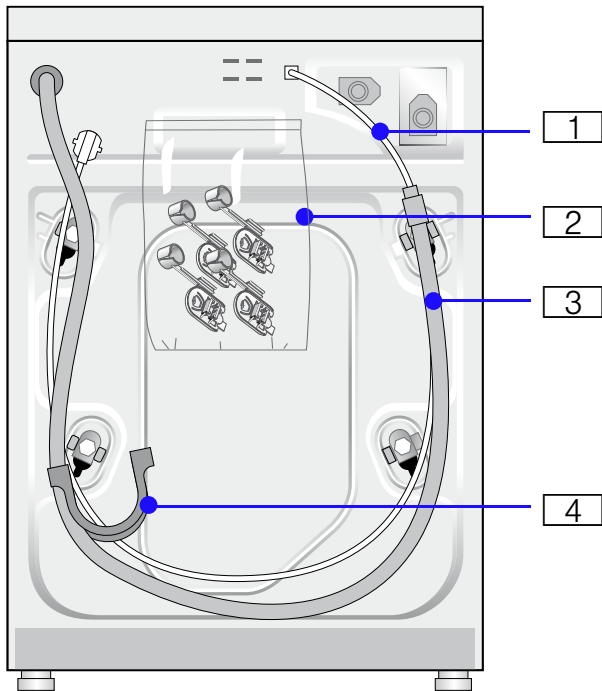
## ▲ WARNING

TO AVOID RISK OF INJURY OR DEATH, DO THE FOLLOWING

- after unplugging the old appliance, remove the electric power cord and dispose of properly.
  - remove the door or permanently disable the door lock to prevent children from being locked inside.
-

## Parts provided with your washer

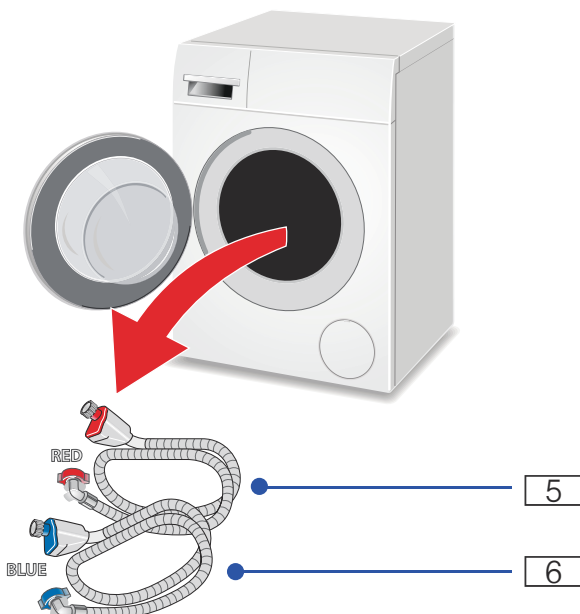
Back side of the washing machine



- 1 Power cord with plug
- 2 Literature pack; contents:
  - User manual
  - Warranty
  - Covers with hose holders
- 3 Drain hose
- 4 Elbow to form the hose to fit the drain pipe

### Washer drum contents

2 water supply hoses are shipped in the washer drum. Be sure to remove each of these items from the drum before using the washer.



- 5 Hot water connection
- 6 Cold water connection

**NOTICE:** If any parts are missing please notify your dealer immediately.

## Set up on a pedestal with drawer

Pedestal item number: WMZ 20490

Mount washer on the pedestal according to the instructions in the installation kit.

## Installation checklist

Review the following list and check off each step as it is completed during installation.

✓	Installation Step	Page
	If installing to a pedestal (base), complete the base installation before removing the transportation bolts	12
	Completely remove all four shipping bolts keeping the bolt and bushing assemblies intact	12
	Connect the water supply hose and drain hose	12
	Connect the electrical power	14
	Slide the washing machine into its final location	
	Level the washing machine (as low as possible)	14
	Before washing laundry, run a maintenance cycle	22

## Importance of installing on a solid, level floor

Your new Bosch washing machine utilizes high spin speeds to achieve superior water removal from your laundry resulting in reduced drying time. It is important to install your washing machine on a floor that will provide firm support. This prevents the washer from experiencing excess vibration during spinning that could cause the washer to move or be noisy.

The installation surface must be solid and level in both directions. Avoid installing your washer on soft surfaces such as floors with carpet or foam backed covering material.

If installing the washer on a wooden floor, observe the following:

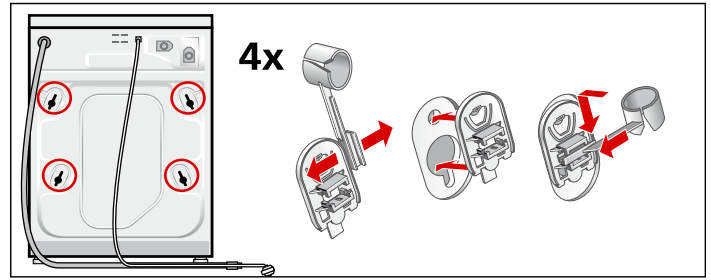
- install the washer in a corner for better support if possible.
- if necessary, reinforce the floor by screwing a water resistant wooden board to the floor (minimum of 1.18 in./30 mm thick).
- secure the front feet of the washing machine with holding brackets. A set of holding brackets can be obtained from a specialist store or from Customer Service (part number WMZ 2200).

## Remove the transport bolts

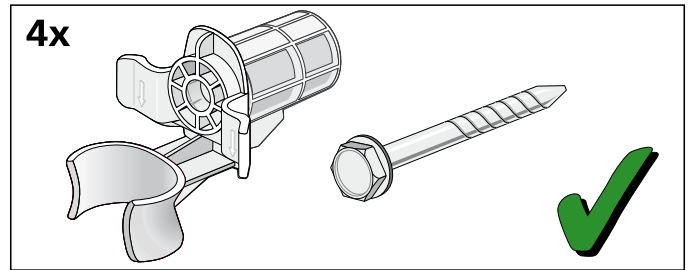
### ▲ CAUTION

#### DAMAGE TO THE APPLIANCE

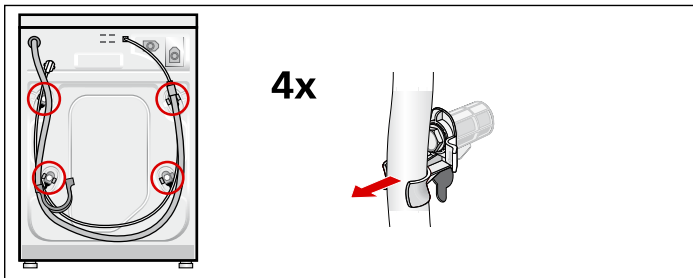
- The machine is secured for transport with transport bolts.
- Transport bolts that are not removed can damage the drum during operation of the machine, the washer will vibrate, and it will be much noisier during spin cycles if the transport bolts are not removed before use.
- Be sure to remove all 4 transport bolts completely before first use. Keep the transport bolts.
- If a pedestal was purchased with the washer, it must be installed first, prior to removing the transport bolts. Please consult the pedestal installation instructions.
- In order to prevent transport damage during later transport, be sure to re-install the bolts before transport.



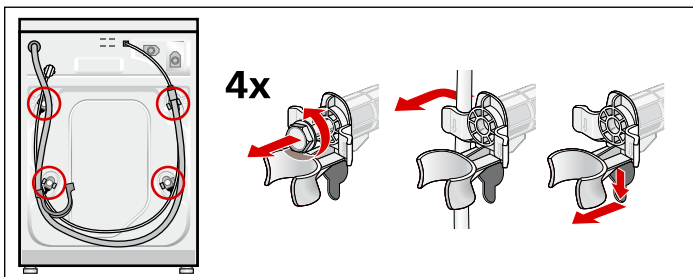
**NOTICE:** Keep the assemblies together and store them for later use such as when moving the washer.



### 1. Remove hoses from the brackets.



### 2. Loosen and remove all 4 transport bolts. Remove the sleeves. Take the power cable out of the brackets.



### 3. Place covers over the transport bolt holes

Four plastic covers are provided in the small parts bag included with your washer. Separate these covers and install one in each hole where the transport bolts were removed.

Lock covers firmly by pressing on the snap hook.

Insert hose holder. Secure hoses in the hose holders.

## Water connections

### Water supply hose connections

#### NOTICES

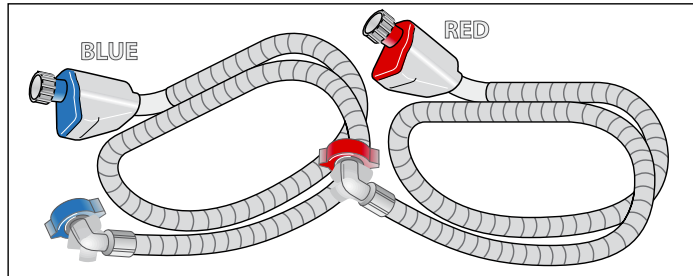
- The washing machine must only be operated with cold and hot (max. 140 °F/60 °C) tap water. Do not connect the appliance to the mixer tap of a pressurized hot-water boiler.
- To prevent water damage, the hot and cold water valves should be accessible when the washing machine is in place and should always be turned off when the washing machine is not in use.
- If installing the washing machine in a new building or a building in which the plumbing system was recently installed or upgraded, flush the lines before installing the washing machine to remove any sand, dirt or residue.
- To prevent leakage or water damage, follow the instruction in this chapter.
- If in doubt, have the appliance connected by a technician.

Connect your washer to the wall faucets using the included AquaSecure water supply hose.

Observe each of the following:

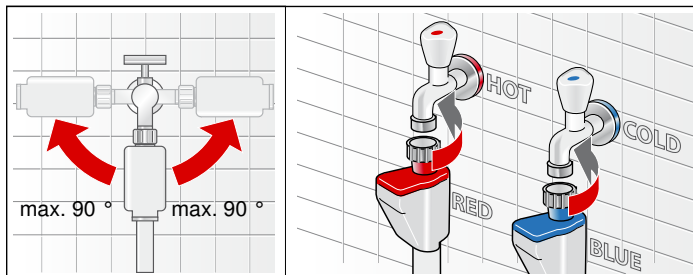
- Only use the new water supply hose shipped with your washer. Never connect old used hoses.
- The water supply hoses must not be kinked, bent or flattened in such a way as to potentially diminish water flow.
- The water supply pressure must be between **14,5 to 145 psi (1 - 10 bar)** with a minimum of 2.2 U.S. gallons (8 liters) of flow per minute. A pressure regulator valve must be installed if the maximum water pressure is exceeded.

- Make sure the water supply faucet is easily accessible when the washer is in use. The faucet should be turned off if the washer is going to be unused for extended periods of time.
- Make sure rubber washers are in place at both ends of the water supply hose. Missing washers could cause leaks.
- The connection points are under full water pressure. Turn on the water tap and check for leaks.
- Periodically inspect the water supply hose and replace with a new hose if cuts, kinks or leaks are observed.

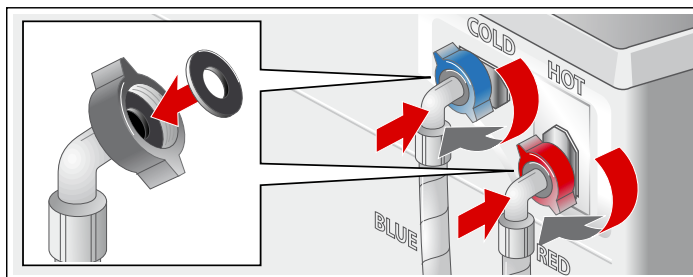


Water connection hoses

- red - Hot water-hose
- blue - Cold water-hose

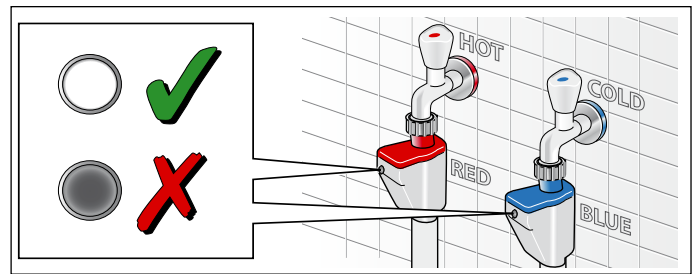


**Attach this end to water tap.** Hand tighten only.



**Attach this end of the hose to the back of the washing machine.** Hand tighten only.

## About the AquaSecure Hose



The AquaSecure hose prevents potential flooding in the event the hose develops an internal leak. If the hose leaks, the indicator turns red and water flow is blocked.

## Water drain hose connection

### NOTICES

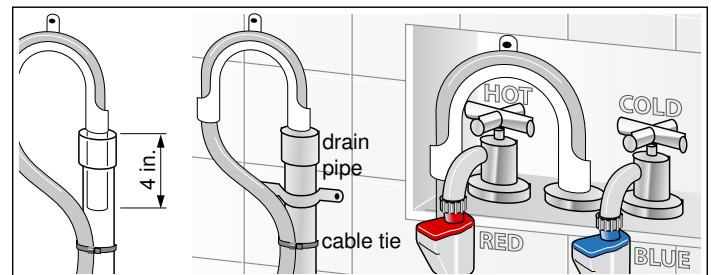
- Do not reuse an old drain hose. Only use the drain hose and parts included with your washer.
- Do not kink or modify the water drain hose.

### Height of drain point

Height difference between the floor and drainage point:  
max. 39 in. (100 cm).

## Types of drainage hookups

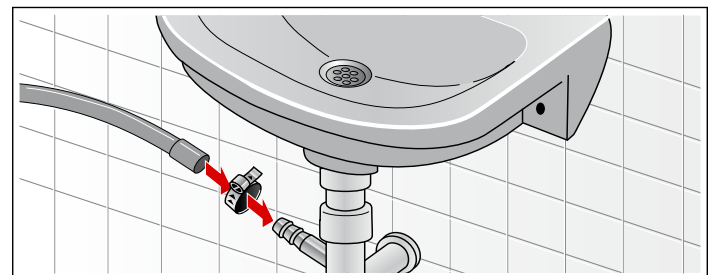
### Standpipe



Attach the drain hose using the elbow included with your washer.

Fit the drain hose to the elbow provided leaving a maximum of 4 inches of drain hose projecting. Insert this section of the drain hose into the drain pipe. Secure the elbow and hose with a nylon tie strap or the equivalent to keep the hose from coming out of the drain pipe during use.

### Sink siphon



Secure the drain hose to the sink siphon using a  $\varnothing$  0.9 - 1.6 in. (20-44 mm) hose clip (available from a hardware store).



## Wash Basin

### ⚠ WARNING

#### SCALDING

When washing at high temperatures, there is a risk of scalding if you touch hot suds, e.g. when pumping out hot suds into a wash basin.

Do not reach into the hot suds.

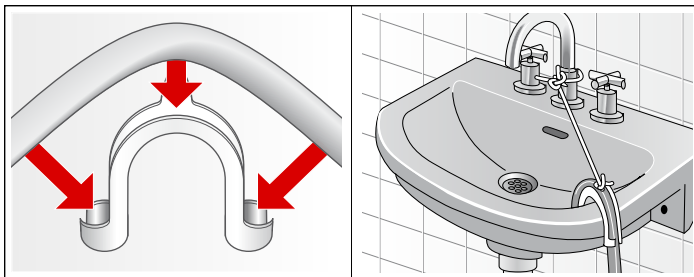
### ⚠ CAUTION

#### APPLIANCE DAMAGE/DAMAGE TO TEXTILES

If the end of the drain hose is dipped into the pumped-out water, water can be sucked back into the appliance and can damage the appliance/textiles.

Make sure that:

- The sealing plugs do not seal the drain of the wash basin.
- The end of the drain hose does not dip into the pumped-out water.
- The water flows out fast enough.



Attach the drain hose securely to the wash basin.

**NOTICE:** In any multi-story installation, the washer should be installed on a drained floor to prevent water damage to rooms below in the event of a leak.

## Leveling the washer

### Importance of leveling the washer

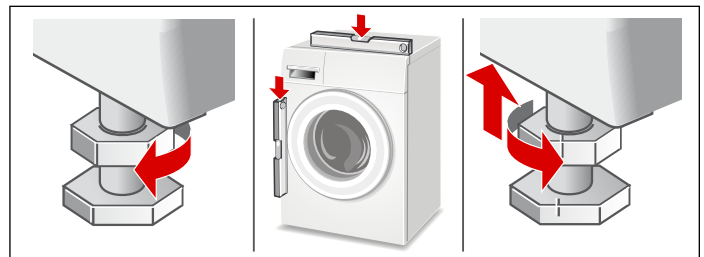
Your new washer uses high spins speeds to remove water at the end of the wash cycle. It is important that your washer is level and that all four washer feet press with equal pressure against the floor. This will help assure the quietest, most vibration-free use of your washer.

### Follow these steps:

1. Install the washer on a level and solid surface, preferably in a corner of a room.
2. If the floor is uneven (or unlevel) adjust the washer feet as required to level the washer. Do not place anything under the washer feet to help level the washer.
3. Extend the washer feet no more than is necessary. The more the feet are extended, the more vibration the washer will experience. Start with the washer feet turned all the way in and adjust each foot as necessary.

4. Use a bubble level to check the top of the washer to make sure it is level side to side and front to rear.
5. Press down on each corner of the washer top to make sure the washer doesn't "wobble". There should be no "give" or movement. All four washer feet should press equally against the floor. This is just as important as the washer being level to prevent vibration.
6. When the washer is level and does not wobble, lock the washer feet in place by tightening the locknuts against the washer bottom. Be sure to do this without changing the height of the foot (hold the foot while tightening the locknut).

### Procedure for adjusting the washer feet:



1. After determining which washer feet need to be extended, have someone lift up on the washer slightly to take pressure off the foot to be adjusted.
2. Turn the grey plastic foot to extend it downward as far as necessary to raise the corner of the washer the correct amount to level the washer.
3. When the height of the foot is correct, use a 17 mm open end wrench to tighten the locknut against the washer bottom. The locknut should be tight against the bottom of the washer to lock the foot in place.

## Electrical connection

### ⚠ WARNING

#### ELECTRICAL SHOCK

Improper connection of the ground may result in electric shock. Have the appliance checked by a qualified technician or licensed electrician if you are in doubt as to whether the washer has been properly grounded.

### ⚠ WARNING

#### ELECTRICAL SHOCK

To reduce the risk of fire or electrical shock, DO NOT use an extension cord or an adapter to connect the washing machine to the power supply.

### ⚠ WARNING

#### ELECTRICAL SHOCK

To reduce the risk of electrical shock:

- Only pull out the main cable by the plug and never by the cable, as this could damage it.
- Never touch or hold the main plug with wet hands.
- Never unplug the main plug during operation.

## Grounding Instructions

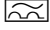
This appliance must be grounded. In the event of malfunction or breakdown, grounding will reduce the risk of electric shock by providing a path of least resistance for the electric current. This appliance is equipped with a cord that has an equipment grounding conductor and a grounding plug. The plug must be plugged into an appropriate outlet that is properly installed and grounded in accordance with all local codes and ordinances.

## Important Points

- Do not modify the plug provided with the appliance. If the plug will not fit into the outlet have a properly grounded outlet installed by a qualified electrician. Do not cut, remove or bypass the grounding prong on the washer power cord plug.
- The washer power cord plug must be easily accessible when the washer is operating.
- When unplugging or plugging in the washer power cord, grasp the plug. Do not pull on the power cord to unplug the washer.
- The household electrical supply must be suitable for the voltage specification shown on the washer rating plate (located inside the washer door, immediately below the drum opening).  
→ *Purchase information; Page 4*  
See the table below for connection specifications and fuse/breaker requirements.

Volts	Hertz	Ampers	Watts
208 - 240	60	12	2.880 max.

- The wiring for the electrical outlet circuit must be sufficient to meet the appliance requirements. Use of a Ground Fault Circuit Interrupter (GFCI) is recommended.
- Protect the power cord from physical damage, such as being twisted, kinked, pinched, caught in a door, or walked upon.
- If the power cord is damaged, it must be replaced by a qualified person to avoid a fire/shock hazard. Replacement power cords are available through Customer Service.  
→ *Customer service; Page 4*
- The washing machine must only be connected to an individual branch circuit via a socket which has been properly installed and grounded.
- Make sure that:
  - the power plug fits into the socket
  - the wire size is sufficient
  - the grounding system is properly installed:
- The power cord may be replaced by an electrician only. Replacement power cords are available from Customer Service. To reduce the risk of fire or electrical shock, DO NOT use an extension cord or an adapter to connect the washing machine to the power supply. If a ground fault circuit breaker is to be used, only use the types marked with the following symbol:

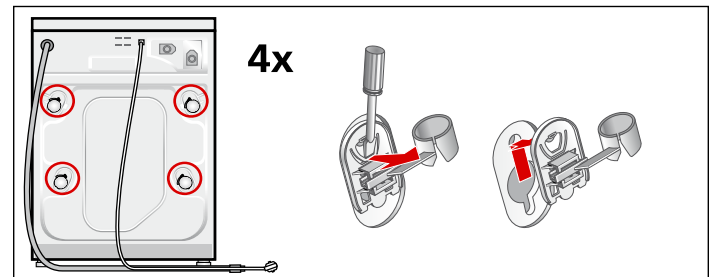
 Only this symbol can guarantee compliance with all current regulations.

## Transporting the washer

### Before transporting the washer

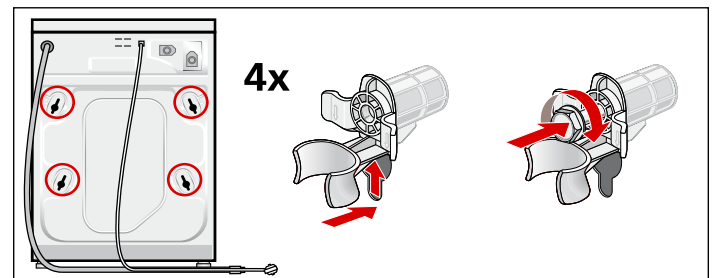
1. Disconnect the washer power cord from the wall outlet.
2. Turn off the water supply to the washer.
3. Disconnect water supply lines from the tap.
4. Disconnect the drain hose from the drain location.
5. Install the transport bolt assemblies as shown below.

### Remove the transport bolt hole covers



1. Remove all four transport bolt hole covers.
2. Pull the tip of the arrow on the cover out slightly to disengage the locking tab.
3. Rotate the cover counterclockwise to remove. Repeat for all 4 transport bolt hole covers.

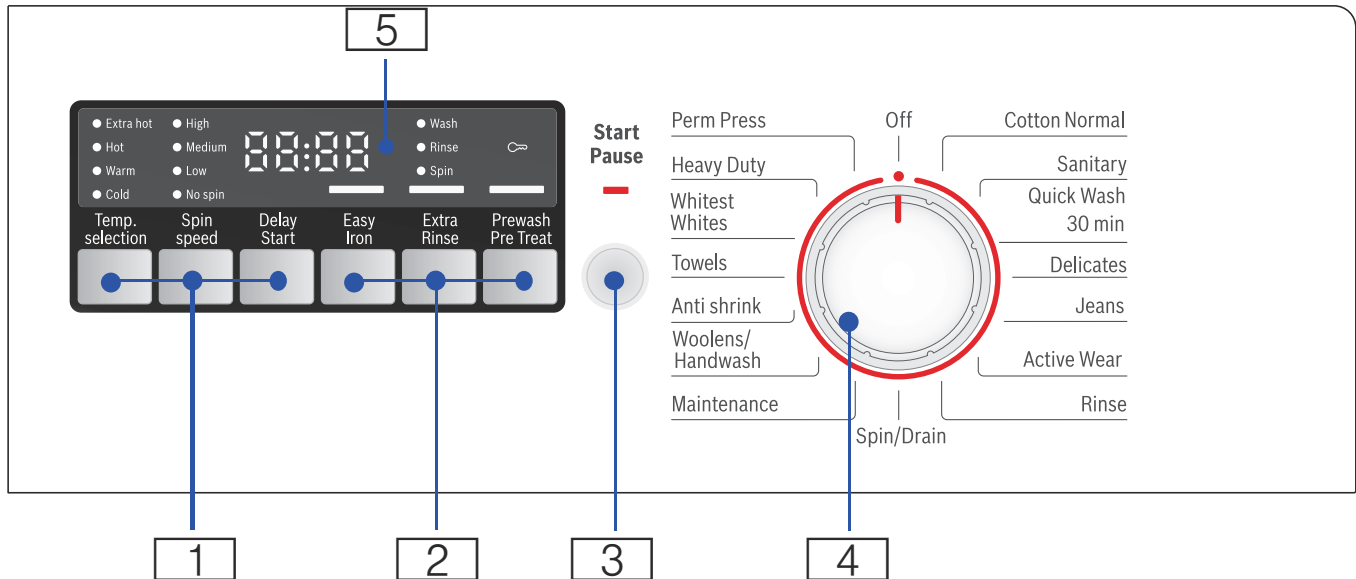
### Insert the transport bolt assemblies



1. Each assembly consists of a plastic bushing and a bolt that extends through the bushings. Unscrew the bolt until the threaded end is flush with the end of the plastic bushing.
2. Insert the transportation bolt and bushing assembly as shown. The metal housing slides around the bolt through the slot in the plastic bushing as the bushing is slid into place. The open part of the bushing slot should be facing the direction shown to allow the assembly to slide fully into place.
3. When the bolt is in place screw it in until the bolt threads engage the drum. Double check and ensure bolts are screwed into threaded holes and not into adjacent cracks or crevices. Repeat the process for all 4 transportation bolt assemblies before tightening any all the way. Complete tightening all 4 bolt assemblies until they are each snug in place.

# Getting to know your appliance

## Control panel



**1 Temp. selection, Spin Speed, Delay-Start**  
To change the default cycle settings.  
Indicator lamp lights up if the setting is active.

**2 Easy Iron, Extra Rinse, Prewash/Pre Treat**  
Additional option settings.  
Indicator on = setting is active.

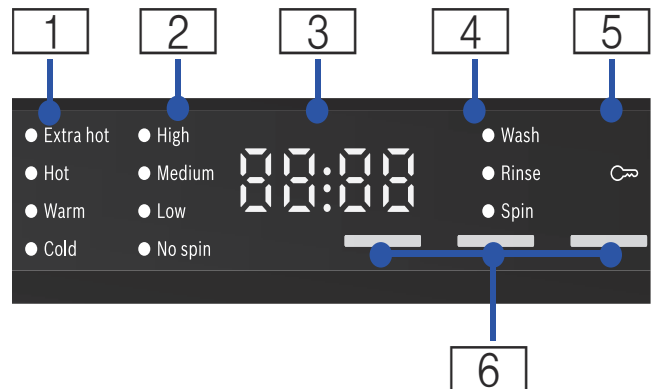
**3 Start/Pause**

- starts or pauses the selected cycle
- lit steady - cycle running, can be paused
- blinking - settings can be changed; cycle can be started; door is locked (water may be hot); cycle is in Pause mode

**4 Cycle Selector for selecting a cycle and on/off switch;**  
turns in both directions.

**5 Display field for settings and information.**

## Display field



**1** Selectable temperature ranges  
Extra hot, Hot, Warm, Cold

**2** Selectable spin speed ranges  
High, Medium, Low, No spin

**3** 4 Digit Display:

- delay start-time  
adjustable in 1h (hours) steps to 24 hours
- cycle duration  
for example 2:40 (hours:minutes)

**4** Cycle status sequence

**5** Child lock

**6** Indicator lamps for additional option settings

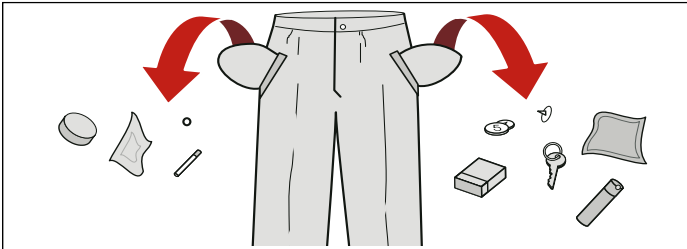
# Laundry

## Preparing the laundry

**NOTICE:** Damage to the appliance/fabrics

Foreign objects (e.g. coins, paper-clips, needles, nails) may damage the laundry or components in the washing machine.

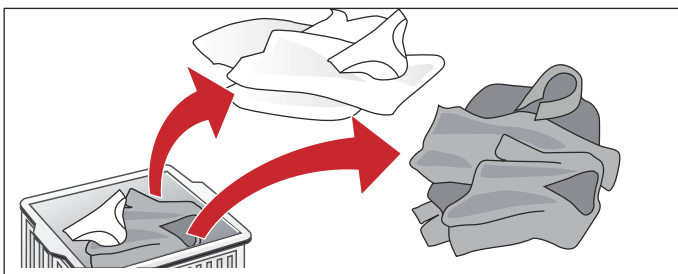
Therefore, note the following tips when preparing your laundry:



- Empty all pockets to ensure no loose debris (coins, keys, other hard objects) are placed in the washer drum.
- Close any fasteners (such as zippers and hooks) that could cause laundry to catch or become entangled.
- Remove any foreign objects or non-washable parts.
- Turn trousers and knitted wear inside out prior to washing.
- Place small items (such as socks and handkerchiefs) and underwired bras into a mesh bag prior to washing.

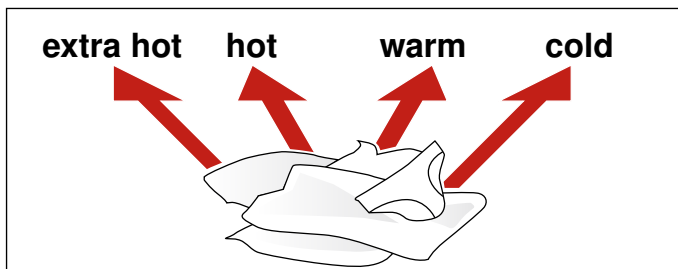
## Sorting the Laundry

Sort laundry items according to color, degree of soiling and recommended wash temperature range.



Wash white items separately from colored items. Otherwise, white items may tend to become grey.

## Observe laundry care labels



Check the care labels on each laundry item prior to washing. Choose an appropriate wash cycle that does not exceed the temperature recommended.

## Determining degree of soiling

### • Light soiling

No visible soiling or stains, but may have absorbed some body odor. This could include light weight summer clothing such as T-shirts, shirts, or blouses worn for only one day. Also to freshen bed linen or guest towels.

### • Normal soiling

Visible soiling and/or a few light stains. This could include clothing such as T-shirts, shirts, or blouses that have been sweated in or worn several times. Also tea towels, hand towels or bed linen used for up to one week. Net curtains (without nicotine stains) that have not been washed for up to a half year.

### • Heavy soiling

Visible soiling and stains. This could include kitchen towels, fabric napkins, baby bibs, children's outer clothing or football jerseys and shorts stained with grass and/or earth. Also could include working clothes such as overalls and jeans and other clothing worn for outside work and activities such as gardening, home and yard maintenance or worn during sports activities.

## Identifying and treating stains



Oils and grease: normal body skin oil, cooking oils/fats, sauces, mineral oil, or wax (containing fat/oil). Treatment: scrape residue from fabric. Pretreat. Wash using hottest water safe for the fabric. For heavy stains, apply non-flammable dry cleaning fluid to back of stain, replacing towels under stain frequently. Rinse thoroughly and wash using hottest water safe for the fabric.



Beverages and juices: tea, coffee, red wine, fruit, vegetables. Treatment: Pretreat stain. Wash using cold water.



Proteins and carbohydrates: blood, egg, milk, starch. Treatment: Rinse immediately in cold water. If stain remains, soak in cold water with an enzyme prewash.



Soot, earth, sand (pigments), red clay (such as soiling of tennis clothing). Brush off residue if present. Pretreat or soak with a laundry product containing enzymes.

## Removing stains

- Remove/pretreat stains as soon as possible after they have occurred.
- Dab with a soapy solution. Do not rub.
- Select an appropriate wash cycle and wash the item. Several washing cycles may be required in order to remove stubborn or dried-in stains.

# Laundry detergents and additives

## Adding the correct amount of HE detergent

### ⚠ WARNING

#### WARNING

To avoid risk of poisoning, keep detergents and cleaning products out of the reach of children.

Avoid overuse of detergent.

Measure out the detergent according to:

- The amount of laundry.  
→ *Sorting the Laundry; Page 17*
- The degree of soiling.
- The water hardness. This information can be obtained from your local water authority. Soft water requires less detergent.

### Too much detergent

- Excessive foam will reduce washing agitation and cause poor washing and rinsing results.
- Not environmentally compatible (wastes detergent and is not good for the environment).

### Too little detergent

- Laundry will not be washed clean.
- Eventually the laundry will take on a grey and hard appearance. Greyish-brown grease spots may stain the laundry, heating elements may begin to calcify.

The fabric care label is important for selecting the correct detergent, temperature and treatment of the laundry.

If desired you can visit the following sites for additional information on detergents and fabric care.

→ [www.textileaffairs.com](http://www.textileaffairs.com) or [www.cleanright.eu](http://www.cleanright.eu)

- **Standard detergent with optical brighteners**  
Suitable for boil-washable white laundry made from linen or cotton  
Program: Cottons / Cold - Extra hot
- **Detergent for colours without bleach or optical brighteners**  
Suitable for coloured laundry made from linen or cotton  
Program: Cottons / Cold - Hot
- **Detergent for colours/delicates without optical brighteners**  
Suitable for coloured laundry made from easy-care fibres, synthetic fibres  
Program: Easy-Care / Cold - Hot
- **Detergent for delicates**  
Suitable for delicate, fine fabrics, silk or viscose  
Program: Delicate/Silk / Cold - Hot

- **Detergent for woollens**  
Suitable for wool  
Wool program: Cold - Warm

## Saving energy and detergent

For light and normal soiling, you can save energy (lower washing temperature) and detergent.

Saving	Soiling/note
Reduced temperature and detergent quantity as per the recommended dosage	<b>Light</b> e.g.: <ul style="list-style-type: none"><li>• Light summer/sports clothing (worn for a few hours)</li><li>• T-shirts, shirts, blouses (worn for up to one day)</li><li>• Guest bed linen and hand towels (used for one day)</li></ul> No visible dirt or stains. Clothing has taken on some body odour.
Temperature as per the care label and detergent quantity as per the recommended dosage for heavy soiling	<b>Normal</b> e.g.: <ul style="list-style-type: none"><li>• T-shirts, shirts, blouses (sweat soaked, worn a few times)</li><li>• Towels, bedding (used for up to one week)</li></ul> Visible dirt or a few light stains.
	<b>Heavy</b> Dirt and/or stains clearly visible, e.g. tea towels, baby items, work clothing

**NOTICE:** When measuring the amount of all detergents/additives/care products and cleaning agents, please always check the manufacturer's instructions and information.



# Cycle selection table

Cycles	max. Load up to:	selectable cycle settings, default settings (bold)		Type of laundry	additional cycle settings ; Information
		Temperature	Spin speed		
<b>Cotton Normal</b>	full load	Extra hot Hot <b>Warm</b> Cold	<b>High</b> Medium Low No spin	Sturdy fabric, cotton or linen fabric that withstands very hot water	Easy Iron, Extra Rinse, Pre-wash/Pre Treat
<b>Sanitary</b>	full load	<b>Extra hot</b> Hot Warm Cold	<b>High</b> Medium Low No spin	Sturdy fabric, cotton or linen fabric that withstands very hot water	Easy Iron, Extra Rinse, Pre-wash/Pre Treat ; longer wash and rinse with more water for especially sensitive skin
<b>Quick Wash 30 min</b>	1/2 load	Hot <b>Warm</b> Cold	High <b>Medium</b> Low No spin	Easy-care fabrics made of cotton, linen, synthetic fibres or blended fabrics ; suitable for slightly-soiled laundry	
<b>Delicates</b>	1/3 load	Hot <b>Warm</b> Cold	Medium <b>Low</b> No spin	for delicate, washable fabrics, e.g. made of cotton, satin, synthetic fibres or blended fabrics (e.g. curtains) ; bulky items (e.g. comforters)	Easy Iron, Extra Rinse, Pre-wash/Pre Treat ; spinning only between rinse cycle
<b>Jeans</b>	1/2 load	Hot <b>Warm</b> Cold	High <b>Medium</b> Low No spin	dark cotton textiles and dark easy-care textiles; Wash textiles inside-out.	Easy Iron, Extra Rinse, Pre-wash/Pre Treat
<b>Active Wear</b>	1/3 load	Hot <b>Warm</b> Cold	<b>Medium</b> Low No spin	Fabric for outdoor wear	Easy Iron, Extra Rinse, Pre-wash/Pre Treat
<b>Rinse</b>	full load		<b>High</b> Medium	Extra rinse with spin	Easy Iron, Extra Rinse
<b>Spin/Drain</b>	full load		Low No spin	Extra spin with selectable speed If this cycle should only drain, set the spin speed to <b>No spin</b> .	Easy Iron
<b>Maintenance</b>	empty		Medium <b>Low</b>	special cycle for cleaning the drum	default temperature: <b>Extra hot</b> ; not visible in the display field and not possible to change the temperature.
<b>Woolens/Hand-wash</b>	1/3 load	<b>Warm</b> Cold	<b>Medium</b> Low No spin	Hand and machine washable wool/wool blend fabrics	Especially gentle washing cycle to avoid shrinkage, long cycle pauses (clothing rests in sudsy water)
<b>Anti shrink</b>	1/3 load	Hot <b>Warm</b> Cold	<b>Medium</b> Low No spin	non-iron shirts/blouses of cotton, linen; synthetic or mixed materials	Easy Iron, Extra Rinse, Pre-wash/Pre Treat
<b>Towels</b>	1/2 load	<b>Extra hot</b> Hot Warm Cold	<b>High</b> Medium Low No spin	durable, boil-proof cotton towels ; especially soft towels	Extra Rinse, Prewash/Pre Treat

Cycles	max. Load up to:	selectable cycle settings, default settings (bold)		Type of laundry	additional cycle settings ; Information
		Temperature	Spin speed		
<b>Whitest/Whites</b>	full load	Extra hot <b>Hot</b> Warm Cold	<b>High</b> Medium Low No spin	White sturdy fabric, cotton or linen fabric that withstands very hot water	Easy Iron, Prewash/Pre Treat
<b>Heavy Duty</b>	full load	Extra hot Hot <b>Warm</b> Cold	<b>High</b> Medium Low No spin	For heavily to lightly soiled (white) cottons, household linens, work and play clothes.	Easy Iron, Prewash/Pre Treat
<b>Perm Press</b>	1/2 load	Hot <b>Warm</b> Cold	<b>High</b> Medium Low No spin	Cotton, linen synthetic or blended fabrics	Easy Iron, Extra Rinse, Prewash/Pre Treat ; reduce rinse and final spin cycle

### Tips

Do not wash new multicolored laundry together with other laundry.


The cycles are time-controlled for lightly soiled fabrics. If fabrics are heavily soiled, reduce the load or select, e.g. Prewash/Pre Treat.

Rinse cycles use cold water only.

For cycles with pre-wash, divide detergent into chamber I and II.

## Starching

**NOTICE:** Laundry must not be treated with fabric softener.

Starching is possible in all wash programs if liquid starch is used. Measure starch into compartment  in accordance with the manufacturer's instructions (clean first if necessary).

## Dyeing/bleaching

Dye should only be used in normal household quantities. Salt may damage stainless steel. Always follow the dye manufacturer's instructions.

Do **not** use the washing machine to bleach clothes.

## Soaking

1. Pour soaking agent/detergent into compartment **II** in accordance with the manufacturer's instructions.
2. Turn the program selector to **Cotton Normal Cold** program.
3. **Press Start/Pause.**
4. After approx. ten minutes, press Start/**Pause.**
5. After the required soaking time, press **Start/Pause** again to continue or change the program.

### NOTICES

- Load laundry of the same color.
- No additional detergent is required; the soaking solution is used for washing.

---

## Default cycle settings

At the factory, a temperature range, spin speed range, and cycle duration ("Finish at" time) are pre-set for all cycles.

After selection of the cycle, these values are displayed in the display field.

You can change the default settings as follows.

### Changing the temperature range

Before and during the cycle, you can change the default temperature range depending on the cycle progress.

Press the appropriate button until the desired setting is displayed.

The maximum temperature range that can be set depends on the cycle selected.

→ *Cycle selection table; Page 19*

### Changing the spin speed range

Before and during the cycle, you can change the spin speed range depending on the cycle progress.

Press the appropriate button until the desired setting is displayed.

**No spin setting:** Rinse stop = without final spin, the laundry remains in the last rinse water.

The maximum speed range that can be set depends on the cycle selected.

→ *Cycle selection table; Page 19*

### Delay Start

When you select a cycle, the duration of the cycle in question is displayed.

Before the cycle start, the cycle end ("Finish at" time) can be pre-selected in one-hour steps (h=hour) up to a maximum of 24h.

Press the **Delay Start** button until the desired setting is displayed.

**NOTICE:** The cycle duration is included in the set "Finish at" time.

After the start, the pre-selected time, e.g. **8h** is displayed and counted down until the wash cycle begins. Then the cycle duration, e.g. **2:40** (hours:minutes) is displayed.

### Changing the pre-selected time:

If the "Delay Start" function has been activated and before the wash cycle has started, you can change the delay time as follows:

1. Press Start/**Pause**.
2. Press the **Delay Start** button until the desired number of hours is displayed.
3. **Press the** Start/Pause button

**NOTICE:** The cycle duration is adjusted automatically when the cycle is running. Changes to the default cycle settings or cycle settings also cause changes in the cycle duration.

---

## Additional program settings

### Extra Rinse

Auxillary rinse cycle. Longer cycle duration. For areas with very soft water or for further improvement of rinse results.

### Easy Iron

Special spin cycle with final loosening up of laundry. Delicate final spin - moisture remaining in the laundry is slightly increased.

### Prewash/Pre Treat

For heavily soiled washing. Pour detergent into dispensers I and II.

# Operating Instructions

---

## ▲ WARNING

---

### WARNING

To reduce the risk of fire, electric shock, or injury to persons, read the Important Safety Instructions and Operating Instructions before operating this appliance.

---

## Before doing any laundry with your washing machine

Check to make sure your washer has been installed properly by following the installation instructions in this manual.

→ *Installation instructions; Page 10*

---

## ▲ WARNING

---

### WARNING

Before installing or using your washing machine read and follow all installation and operating instructions.

---

Check the machine. Never start a damaged machine! Contact your customer service!

Check to be sure your household electrical system voltage and the voltage specifications on the washing machine rating plate correspond.

Check to be sure the washer hot and cold water supply taps are turned on.

## Turning the washing machine on and off

The rotating Cycle Selector turns the washer on as wash cycles are selected and off when the selector is later turned to the vertical **Off** position.

## Before loading your first load of laundry

Your new washing machine was tested before leaving the factory. This process involves running various wash cycles. As a result, a small amount of water may remain in the tub and drainage system. Run a Maintenance cycle with no laundry to clean the system before your first load of laundry.

First add 1 to 2 tablespoons of detergent to the leftmost compartment of the detergent dispenser. Then run the **Maintenance** cycle.

→ *Cycle selection table; Page 19*

Wait for the cycle to finish.

## Using the cycle selector to choose a wash cycle

**NOTICE:** If you have activated the child lock, you must deactivate it before you can set a cycle.

→ *Child lock; Page 24*

Use the cycle selector to select the desired cycle. Turns in both directions.

The machine is switched on.

In the display field, the cycle duration for the selected cycle appears and the indicator lamps for the pre-set temperature and spin speed range light up.

## Changing default cycle settings

You can use the default settings or change the default settings.

Press the appropriate button until the desired setting is displayed.

The settings are active without confirmation.

They are not retained after the appliance is switched off.

→ *Default cycle settings; Page 21*

→ *Cycle selection table; Page 19*

## Selecting additional cycle settings

By selecting additional settings, you can adjust the washing process still better to suit the items you are washing.

The settings can be selected and deselected depending on the cycle progress.

The indicator lamps of the buttons light up if the setting is active.

The settings are not retained after the appliance is switched off.

→ *Additional program settings; Page 21*

→ *Cycle selection table; Page 19*

## Loading the laundry

---

## ▲ WARNING

---

### WARNING

To avoid risk of explosion! Laundry items that have been pretreated with any material containing solvents (e.g. stain remover, cleaner's solvent) must be rinsed out thoroughly by hand before they are placed in the washing machine.

---

## Loosen the laundry being loaded and mix small and large items

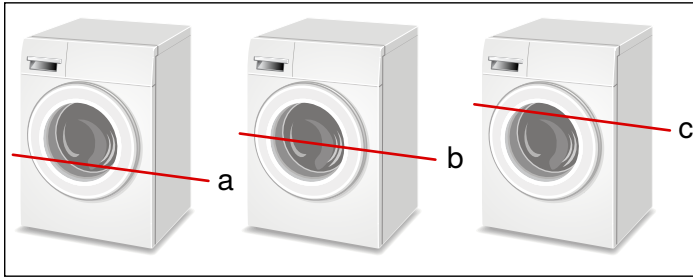
Unfold the sorted items and place them loosely in the drum. Mix small and large items to help them better distribute in the drum during the spin cycle.

**Tip:** Do not exceed the maximum load recommended for the type of wash. Overloading will cause poor wash results and will cause creasing.

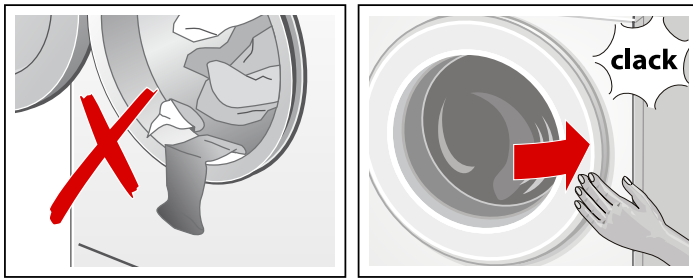
## Recommended Load Size

Recommended maximum load size can be found:

→ *Standard features and helpful information; Page 7*



- a **1/3 Load** - woollens, delicates, silk
- b **1/2 Load** - cotton, synthetic fabrics, or knitted textiles
- c **Full Load** - cotton and linen



## Tips

After loading, close the door carefully so as not to trap any items between the door and the rubber seal. The door should close easily and should not be forced to close.

Foreign objects left in the drum may damage laundry. Before inserting any laundry, check to make sure no foreign objects are in the drum.

## Filling the detergent and additives compartments

**NOTICE:** Damage to the appliance

Detergent and laundry pre-treatment aids (e.g. spot remover, pre-wash sprays, etc.) can cause damage if they come into contact with the surfaces of the washer. Do not let these substances touch the surfaces of the washer. If necessary, wipe off spray traces and other traces/drops immediately with a soft cloth.

## Measuring

Measure out the detergent and laundry care products according to:

- the water hardness; consult your water utility company for details
- the manufacturer's instructions on the packaging
- Quantity of laundry
- Soiling

## Filling

### ▲ WARNING

#### IRRITATION OF EYES/SKIN!

When opening the detergent drawer during operation, detergent or laundry care products may spray out.

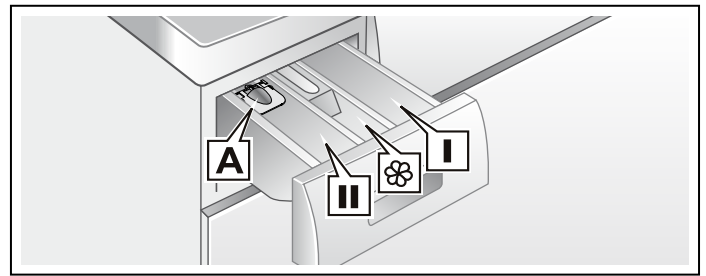
Open the drawer carefully.

In case of contact with detergent or laundry care products, rinse the eyes or skin thoroughly.

In case of accidental ingestion, consult a doctor.

**NOTICE:** Thin thick fabric softener and laundry care products with water; this prevents clogging.

Pour the detergent and laundry care product into the appropriate chambers:



Detergent dispenser A	for liquid detergent
Dispenser I	Detergent for pre-wash
Dispenser ⌘	Fabric softener, starch

Do not exceed max

### Tips

Do not pour fabric softener directly into the wash load.

Fabric softener is automatically dispensed during the last rinse cycle.

Dilute concentrated or thick fabric softener or fabric conditioner with water (2/3's water) before pouring it into the dispenser (prevents blockage of overflow).

Dispenser II	Detergent for main wash, water softener, spot remover,
--------------	--

**NOTICE:** Do not use bleach and liquid chlorine bleach or color safe bleach.

1. Open the detergent dispenser drawer.
2. Add detergent or additive.
3. Avoid overfilling the compartment to prevent early dispensing.
4. Close the detergent dispenser drawer completely before starting the wash cycle.

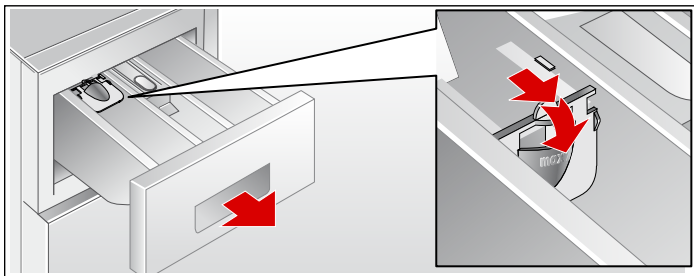
**Tip:** DO NOT operate the washer without the detergent compartment in place and fully closed.



## Liquid detergent dispenser

To measure liquid detergent:

1. Pull out the detergent drawer. Press down on the insert and remove the drawer completely.
2. Push the liquid detergent dispenser forward.
3. Insert the drawer again.



**NOTICE:** Do not use the liquid detergent dispenser with gel-type detergents and powdered detergents or for cycles with pre-wash and selected "Finish at" time.

## Starting the cycle

Press the Start/Pause button. Indicator lamp lights up and the cycle starts.

**NOTICE:** If you want to protect the cycle against inadvertent adjustment, select the child lock.


→ *Child lock; Page 24*


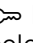
During the cycle, the display field indicates the "Finish at" time and, after starting the washing cycle, the cycle duration and the symbols for the cycle progress.

→ *Display field; Page 16*

## Child lock

You can secure the washer against inadvertent changing of the set functions. To do this, activate the child lock after cycle start.

To **Activate/Deactivate**, press Start/Pause for approx. 5 seconds. In the display field, you will see the  symbol.

-  lit steady: The child lock is active.
-  blinking: The child lock is active and the cycle selector has been adjusted. To prevent a cycle interruption, set the cycle selector back to the initial cycle. The symbol lights up again.

**NOTICE:** The child lock can remain activated until the next cycle start even after switching the machine off. Then you must deactivate the child lock before cycle start and if necessary activate it again after cycle start.

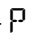
## Selecting a different cycle

If you have inadvertently started the wrong cycle, you can change this as follows:

1. Press Start/Pause.
2. Select another cycle.
3. Press **Start/Pause**. The new cycle starts from the beginning.

## Pausing/Continuing the cycle

e.g. for soaking → *Soaking; Page 20*

Press Start/Pause. -  - appears on the display panel; washing machine door cannot be opened. To continue the cycle, press **Start/Pause**.

## Cancel cycle

For cycles with a high temperature:

1. Press Start/Pause.
2. Cool the laundry off: Select **Rinse**.
3. Press **Start/Pause**.

For cycles with a low temperature:

1. Press Start/Pause.
2. Select **Spin/Drain**.
3. Press **Start/Pause**.

## Cycle end with rinse stop

Appears in the display field – – – and the indicator lamp on the Start/Pause button blinks.

In order to exit the cycle, set the cycle selector to Spin/Drain or select a spin speed range, then press the **Start/Pause** button.

## Cycle end

**End** appears in the display field and the Start/Pause button indicator lamp is off.

If the cycle status sequence **Wash** is also flashing in the display field, the washer has detected too much foam during the washing cycle and it has then automatically switched on a rinse to remove the foam.

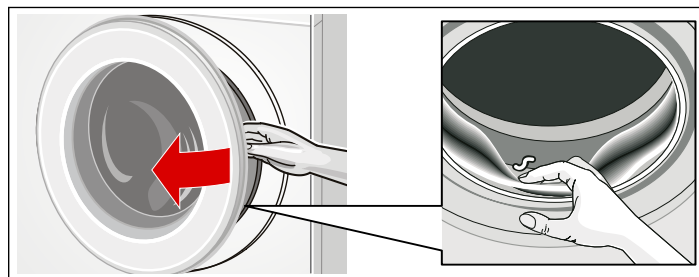
**NOTICE:** Use less detergent the next time you run the washer with the same load.

## Removing laundry/switching the appliance off

1. Open the front door of the washer and remove the laundry.
2. Turn the cycle selector to the **Off** position. Appliance is switched off.
3. Turn off the water tap.

### NOTICES

- Do not leave any laundry in the drum. It can shrink or be discolored by the next laundry.

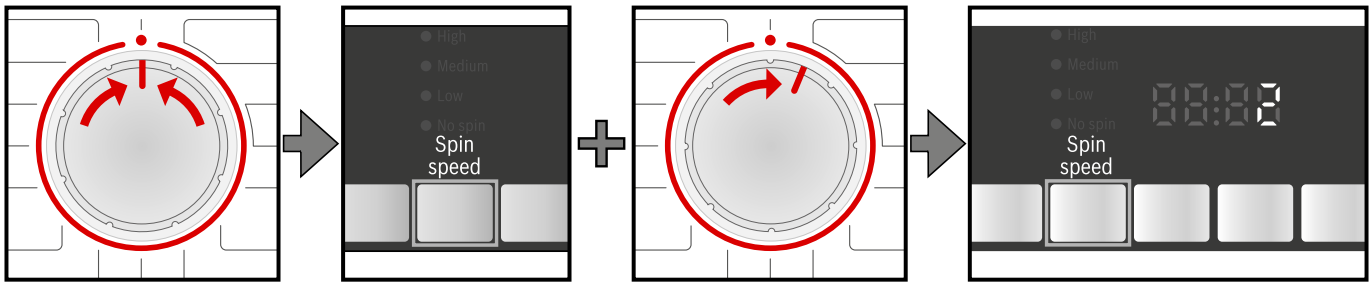


- Remove any remaining items from the drum and rubber gasket.

- Leave the front door and detergent drawer open so that any remaining water can dry up.
- Always wait for the end of the cycle; otherwise the appliance may still be locked. If locked, switch the appliance on and wait until it unlocks.
- If at the end of the cycle the display is not lit up, the energy saving mode is active. To see display, press any button.

## Signal

### 1. Activate adjustment mode for the signal volume

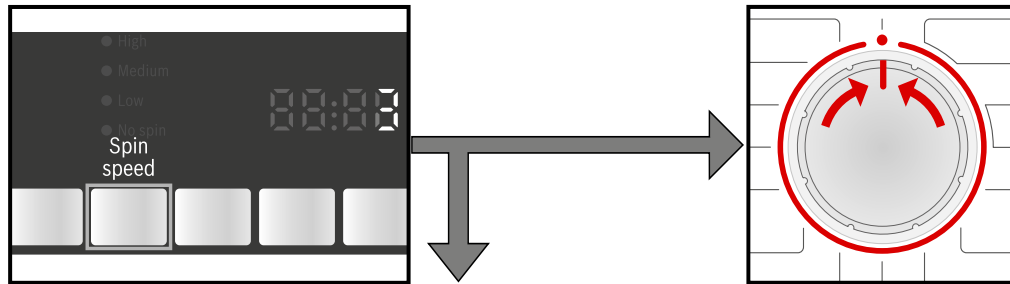


Place on ●.

Hold **Spin speed** button down + turn one position to the right.

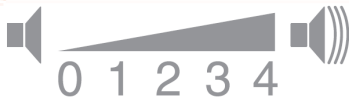
Hold down for an additional 5 s until the display elements light up. Adjustment mode is activated.

### 2. Setting volume for button signals (depending on the model)

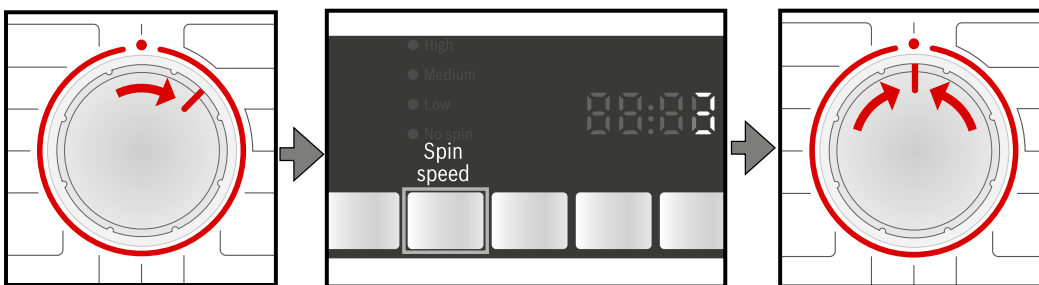


Press until the desired volume has been reached. to 3. or

● in order to exit the adjustment mode for the signal volume.



### 3. Setting volume for indicator signals



Turn one position to the right.

Press until the desired volume has been reached.

● in order to exit the adjustment mode for the signal volumen.

# Cleaning and maintenance

Your washer is designed to give you many years of service. Observe the following instructions to maintain and protect your washer and keep it in top operating condition.

## ▲ WARNING

### RISK OF ELECTRIC SHOCK!

To avoid risk of electric shock always disconnect the washer from the power outlet prior to cleaning. Never clean the washer with a pressure washer.

## Cleaning the housing and control panel

## ▲ WARNING

### RISK OF EXPLOSION!

To avoid risk of explosion never clean the washer with flammable solvents.

As required, you may clean the washer housing and control panel.

- use hot soapy water or a mild (non-abrasive) cleansing agent.
- Dry with a soft towel.
- Remove residue immediately.
- Do not use high pressure spray.

## Cleaning the drum

Metallic debris left in the drum can produce rust spots on the drum. Never use steel wool to try to remove these.

Use a chlorine-free cleansing agent and follow the manufacturer's instructions.

## Descaling the washer

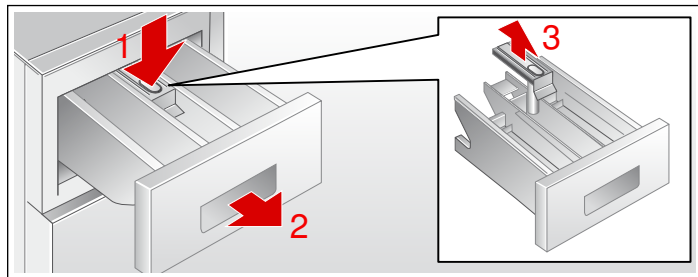
Provided that you use correct amounts of detergent with your wash loads, descaling is not necessary. If descaling the washer drum does become necessary, please follow the descaling product manufacturer's instructions.

Small amounts of descaling agent can be used to remove white spots on the washer drum caused by lime or mineral deposits or small amounts of rust caused by metal objects left in the drum.

**NOTICE:** Descaling agents contain acids which may attack parts of the washing machine and may discolor the laundry.

## Cleaning the detergent dispenser

If there is a buildup of residual detergent or additives, or if the softener compartment is not rinsed out well enough, it may be helpful to clean the dispenser.



1. Open the dispenser drawer fully. Press down on the drawer catch (1) and pull the drawer (2) from the washer housing.
2. Remove the liquid detergent insert (3) by grasping it and pulling it upwards from the detergent dispenser drawer.
3. Clean the insert by holding it under warm running water. Lightly wipe away any remaining detergent residue.
4. Reinsert the liquid detergent insert and slide the detergent dispenser drawer back into place and close the drawer securely.

**Tip:** Do not operate the washer without the detergent drawer in place and completely closed.

## Cleaning the water inlet strainers

If the washer water supply slows or stops completely, the water inlet strainer may be blocked. Cleaning is recommended every 6 months in any event to reduce chances of valve blockage in areas using hard water.

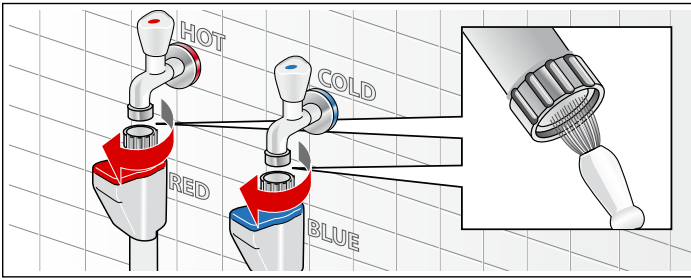
## Release the water under pressure in the supply hoses

Normal water pressure in your home will cause some water to leak when you remove the water supply hose from the back of the washer. You can minimize this by first de-pressurizing the hoses.

1. Turn off the water tap.
2. Turn the cycle selector to any wash cycle (not to Drain or Spin).
3. Press Start/Pause and allow 30 seconds to pass.
4. Turn the cycle selector to the **Off** position.

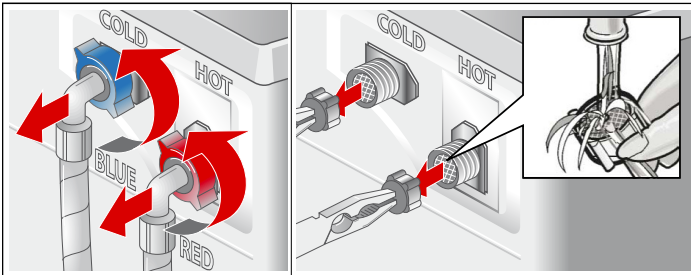
This should reduce the water pressure on the water supply hose.

## Clean the strainers at the water tap end of the hose



1. Remove the hose from the tap.
2. Rinse the strainer under running water. Look at the strainer to see if any visible debris is still present. Rinse again if necessary to remove the debris.
3. Reconnect the hose to the tap.

## Clean the strainers at the washer end of the hose



1. Remove the hose from the inlet on the back of the washer.
2. Using narrow pliers, grasp and pull the strainer from the inlet port.
3. Rinse the strainer under running water.
4. Reconnect the hose to the back of the washer and turn on the water tap. Check to see if water flows by starting a warm water wash cycle.

**NOTICE:** Check for leaks to be sure the rubber washers are seated at both ends of the water supply hose and the connections are properly tightened.

## Cleaning the drain pump

### ▲ WARNING

#### RISK OF SCALDING

Risk of hot water injury to skin!

Allow the water to cool down prior to actuating the emergency door lock release.

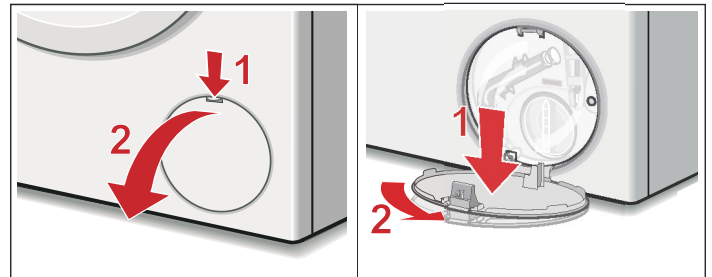
Caution, you are responsible for ensuring the safety of doing so. The water in the drum may be very hot and may pose a scald risk. Also, the drum may be full of water.

It may be necessary to clean the washer drain pump if the washer fails to drain (sound of water being pumped from the washer cannot be heard when the washer should be draining and other nearby drains, such as a sink, are draining properly).

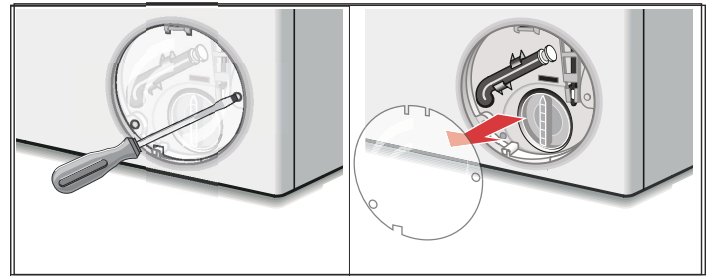
The washer pump can become blocked by loose debris (a good reason to check the drum and remove any visible debris after each load.) Fabrics that give off large amounts of fluff may also cause blockage.

To access the washer drain pump, the service cover must first be removed (see steps below). With the service cover removed, proceed as follows:

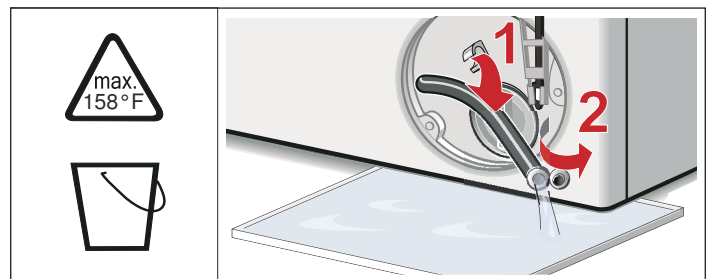
1. If the washer has not been drained, try to drain it now. Turn the cycle selector to the **Spin/Drain** cycle, select **No spin** and press the **Start/Pause** button. Wait a few moments to let the cycle drain the water from the drum. If the pump is totally blocked, the water will be unable to drain and the cycle will end.
2. Shut off the tap so that no more water flows in and has to be drained.  
Switch the appliance off. Unplug the power plug.



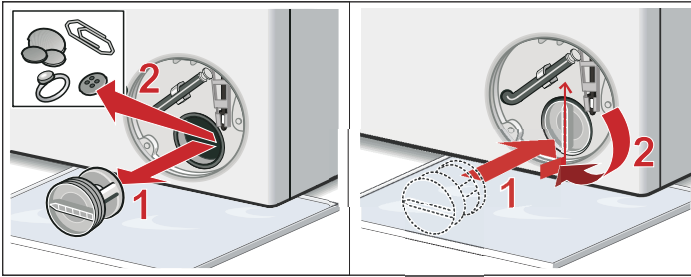
3. Open and remove the service cover.



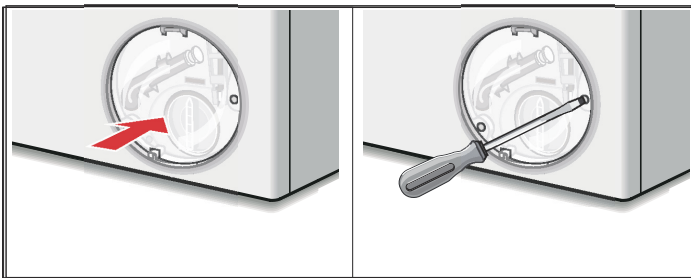
4. Loosen the screws and remove the protective film.



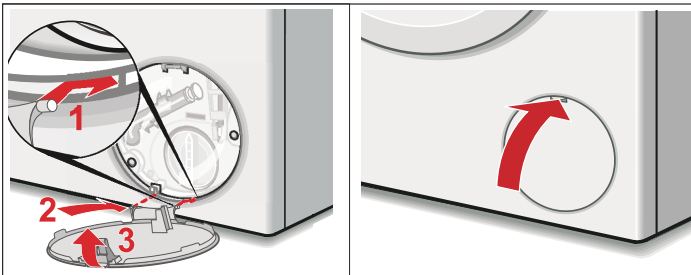
5. Use the pull-out drain hose located in the pump access opening to drain the remaining water into a suitable container (up to 5.3 U.S. gallons/20 liters of water may be drained). Pull the sealing cap from the hose and lay the hose over the side of the container and allow the water to finish draining from the drum. When finished, replace the sealing cap into the end of the hose and restore the hose to its storage location.



6. Turn the pump cover counterclockwise to remove it. A small amount of residual water may flow out when the cover is removed. Clean the interior of the pump housing, removing any debris or foreign objects. Check to be sure the impeller wheel at the back of the pump housing can now turn freely. Remove any lint, debris or detergent residue from the threads of the pump cover and the pump cover housing. Replace the pump cover and tighten the screws. Handle must be vertical.



7. Screw the protective film on the pump on again.



8. Insert the service cover snap it in, and close it.

**NOTICE:** In order to prevent detergent from flowing unused into the drain during the next wash cycles: pour 0.26 U.S. gallons/1 liter water into the chamber II. Turn the cycle selector to the **Spin/Drain** cycle, select **No spin** and press the **Start/Pause** button.



# Troubleshooting

## Emergency door lock release

In the event of a power interruption the program will continue running when the power supply has been restored.

If the washer door must be opened and the normal door unlock procedures do not work, the emergency door lock release rod can be actuated to open the door.

---

### ▲ WARNING

#### RISK OF SCALDING

To avoid risk of scalding, allow water to cool down prior to activating the emergency door lock release. The drum may be full of hot water which could cause burn injury.

---

---

### ▲ WARNING

#### RISK OF INJURY

You may injure your hands if you reach into the drum while it is turning.

Do not reach into the drum when it is turning. Wait until the drum has stopped turning.

---

---

### ▲ CAUTION

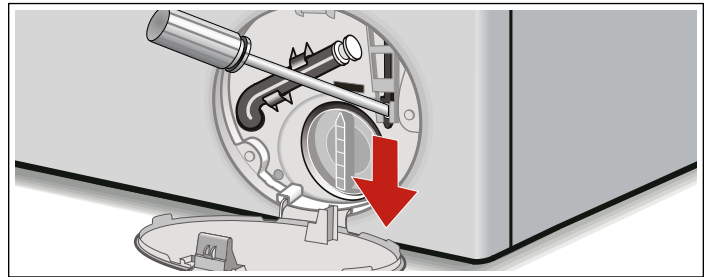
#### WATER DAMAGE

Any escaping water may cause water damage.

Do not open the washing machine door if water can be seen through the glass.

---

1. Turn the washer off by rotating the cycle selector to the **Off** position. Any running program will then be cancelled. Disconnect the mains plug.
2. Allow the water in the drum to cool off.
3. Allow the washer drum to come to a stand still (no longer spinning).
4. Before opening the washer door, perform the drain procedure included in the pump maintenance section following.  
→ *Cleaning the drain pump; Page 27*
5. Loosen screws and remove the protective foil.
6. The washing machine door can then be opened. Pull the emergency release downwards with a tool and release.



7. The door can then be opened.

## Troubleshooting

If you encounter a problem, consider the suggestions and instructions below before you call customer service.

---

### ▲ WARNING

#### ELECTRIC SHOCK

To avoid risk of electric shock, repairs should be carried out by an authorized technician.

---

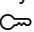
If repairs are necessary and you cannot eliminate the fault with the aid of the table below, follow these steps:

1. Turn the cycle selector to **Off**.
2. Disconnect the washer from the power outlet.
3. Turn off the water faucet.
4. Call Customer Service.  
→ *Customer service; Page 4*

**NOTICE:** The troubleshooting items listed below can help you resolve minor issues with your washer quickly and without the necessity of waiting for a service call.

**Service calls for issues that could have been solved by using this table may not be covered under the warranty. Please rule out any of these issues before calling customer service.**

## Determining the Problem

Problem	Possible cause(s)	Solution(s)
Washer door cannot be opened.	Child lock is activated.	Deactivated Child lock (press and hold Start/Pause for 5 seconds).
	A power failure occurred.	If a cycle is interrupted by a power failure, it will resume when the power is restored.
	Cycle is running, or water level is high or hot.	Wait until the cycle ends.
	Electric power cord has become loose or unplugged.	Make sure the electric cord is securely plugged in.
	Cycle selector turned to <b>Off</b> before end of cycle.	Turn the cycle selector to a cycle.
	Select <b>No spin</b> .	In order to exit the cycle, set the cycle selector to Spin/Drain or select a spin speed range, then press the <b>Start/Pause</b> button.
	Emergency door lock released is activated.	→ <i>Emergency door lock release; Page 29</i>
Door still cannot be opened, even after turning the washer <b>Off</b> and back on again.	Child lock is activated	Deactivated Child lock (press and hold Start/Pause for 5 seconds).
	Door is locked for safety reasons (high water level, temperature of water hot, or high drum speed (drum is turning).	
Wash cycle time is increased.	Your washer utilizes sensors to monitor certain characteristics of the wash load. Increases in wash cycle time could be due to: Excess suds.	Solutions are based on the specific reason the wash time has been extended.  Use less detergent.
	The automatic unbalanced load detection system spins the laundry several times to ensure even distribution.	Always load the washer with a mixture of large and small wash items (easier to distribute in the drum).
Cycle does not start - Start/Pause flashes.	<b>Start/Pause</b> button not pressed / selected?	Press the <b>Start/Pause</b> button to start the cycle.
	Washer door is not closed properly.	Check if laundry is caught in the door. Close the door until a click is heard, the cycle should start.
Cycle does not start - Delay start-Time is displayed.	Cycle ending time has been selected and activated.	Wash cycle will begin at proper time to complete at the selected finish time.
Cycle does not start -  symbol flashes.	Child lock is activated.	Deactivate Child lock (press and hold Start/Pause for 5 seconds).
Detergent residue remains in the detergent dispenser.	Dry detergent may have been damp or lumpy.	Clean and dry the detergent dispenser.
	Excess liquid detergent may have been added.	See Adding the correct amount of HE detergent to determine proper detergent usage.
	Use the dosing cup for liquid detergent when dosing powder detergent. Powder detergent may have been damp or lumpy.	Clean and dry the detergent dispenser.
Water does not appear to be coming into the washer, or detergent is not washed away.	Start/Pause selected?	Select Start/Pause.
	Water faucet not turned on.	Turn on water faucet.
	Supply hose kinked or pinched (reduce flow).	Eliminate the cause.
	Water supply hose strainers clogged.	Clean the water inlet strainers.
	Water pressure too low.	Eliminate the cause.

<b>Problem</b>	<b>Possible cause(s)</b>	<b>Solution(s)</b>
Water cannot be seen in the drum.	The water level in your high efficiency front load washer is below the visible part of the drum, this is normal.	No action needed.
Water has not drained completely.	Suds may be excessive (usually due to too much detergent or non-HE detergent being used).	Use less detergent for future loads. Be sure to use only high efficiency HE-detergents.
	<b>No spin</b> is selected.	In order to exit the cycle, set the cycle selector to Spin/Drain or select a spin speed range, then press the <b>Start/Pause</b> button.
	Pump is blocked.	Check and clean the drain pump, water drain hose and/or the drain pipe.
	Drain hose or drain pipe is blocked.	Clean drainage pipe and/or drainage hose.
Water is coming out from the underneath the washer.	Water supply hose is leaking: is not screwed on tight at both ends, or rubber washer not placed in hose.	Eliminate the cause: tighten the hose (by hand at the washer end), check for rubber washer in place.
	Drain hose is leaking.	Check the drain hose, be sure that it is on the washer securely with the clamp in place; may need to replace the drain hose if leaking continues.
Foam comes out of the detergent dispenser drawer. The cycle status sequence Wash flashes in the display.	Too much detergent was used, or a non-HE detergent was used; pump was not able to pump out the increased suds.	Immediate fix: mix 1 tablespoonful of fabric softener with 1/2 liter (1 pint) of water and pour this mixture into the detergent compartment (not with waterproof fabrics).
		To prevent: use less detergent for future wash loads.
Repeated spinning.	The Unbalanced Load Detection system is attempting to balance the load through repeated spins.	To prevent: always load the washer with a mixture of large and small wash items (easier to distribute in the drum).
No spin took place (laundry is still wet).	Load size too small.	Add more laundry.
	Large items may have become entangled in the drum and could not be distributed by the Unbalanced Load Detection system; spin cycle therefore canceled for safety reasons.	To prevent: always load the washer with a mixture of large and small wash items (easier to distribute in the drum).
	Excessive suds: too much detergent was used, or a non-HE detergent was used.	Immediate fix: mix 1 tablespoonful of fabric softener with 1/2 liter (1 pint) of water and pour this mixture into the detergent compartment (not with waterproof fabrics). To prevent: use less detergent for future wash loads.
Detergent residue on the laundry.	Some phosphate-free detergents contain water-insoluble residues may appear as light spots on the laundry.	Brush off when laundry is dry or execute the program <b>Rinse</b> .
System shakes or shudders when spin speed increases.	The washer drum suspension system shifts during spinning as the speed increases. This may result in a slight shaking of the washer during the spin speed transition.	Mix small and large laundry items together in the load to minimize this effect. Check to be sure the washer is level and all four feet press equally against the floor. Transport bolts removed? → <i>Remove the transport bolts; Page 12</i>

## Error messages

Display	Fault	Measure
E:16	Door not closed properly.	Check to be sure no laundry is caught in the washer door. Close the door securely.
E:17	Water tap not turned on.	Turn on water tap.
	Water supply hose kinked or pinched closed.	Eliminate the cause, replace the hose if damage.
	Strainer in water supply hose clogged.	Clean the water inlet strainer. → <i>Cleaning the water inlet strainers; Page 26</i>
	Water pressure too low.	Eliminate the cause.
E:18	Too much detergent used or non-HE detergent used.	Use less detergent for future loads. Only use HE detergents. → <i>Your washing machine is intended for; Page 5</i>
	Pump is blocked (obstructed).	Clean the washer drain hose and/or the drain pipe. May need to perform pump maintenance to clear blockage. → <i>Cleaning the drain pump; Page 27</i>
Other displays		Turn off machine, wait 5 seconds and turn on again. If the display shows again, call customer service.

**NOTICE:** Error messages should be listed here. Include those that the customer can benefit by seeing and understanding what the code means. Some error codes can only inform the customer to call Customer Service.

---

## Customer service

Contact our Customer Service Department if your appliance needs repair. Our central Customer Service will be happy to supply you with details on a center close to you.

**E-Nr.** and **FD** (serial) number:

When you contact our Customer Service, please have the **E-Nr.** (model number) and the **FD** (serial) number for your appliance available. You can find the identification plate with these numbers on the underside of the appliance and in the appliance booklet.

Questions? Please contact us. We look forward to hearing from you!

1-800-944-2904

www.bosch-home.com

1901 Main Street, Suite 600  
Irvine, CA 92614

# STATEMENT OF LIMITED PRODUCT WARRANTY

## Bosch Clothes Washer

**What this Warranty Covers & Who it Applies to:** The limited warranty provided by BSH Home Appliances Corporation (Bosch) in this Statement of Limited Product Warranty applies only to the Bosch Clothes Washer ("Product") sold to you, the first using purchaser, but strictly conditioned on the Product having been purchased: (1) for your normal, household (non-commercial) use, and has in fact at all times only been used for normal household purposes (any commercial use or setting of the Product automatically voids the warranty); (2) new at retail (not a display, "as is", or previously returned model) purchased directly by the end-user consumer, and not for resale, or commercial use; and (3) within the United States or Canada, and has at all times remained within the country of original purchase. The warranties stated herein apply only to the first purchaser of the Product and are not transferable. Bosch reserves the right to request proof of purchase at the time any warranty claim is submitted to confirm that the Product falls within the scope of this limited product warranty. The warranty is automatically void if the Product was a display model, sold "as is", tampered with, a damaged or "scratch and dent" model, or a previously returned model, a free give-away, charitable donation or contest prize.

### Limitation for Third Party Accessories and Water

**Supply Hoses:** Third party accessories, including water supply hoses other than those shipped with your Bosch washer, and any consequential damages resulting therefrom, are not covered by this warranty. This limitation expressly includes the implied warranties of merchantability and fitness for a particular purpose, which are also expressly excluded with respect to third party accessories, including water supply hoses other than those shipped with your Bosch washer. Use of third party accessories, including water supply hoses other than those shipped with your Bosch washer, does not void this warranty on any other part, and all other provisions of this warranty remain in effect.

Please make sure to return your registration card; while not necessary to effectuate warranty coverage, it is the best way for Bosch to notify you in the unlikely event of a safety notice or product recall.

**How Long the Warranty Lasts:** Bosch warrants that the Product is free from defects in materials and workmanship for a period of three hundred sixty-five days (365) days from the date of purchase. The foregoing timeline begins to run upon the date of purchase, and shall not be stalled, tolled, extended, or suspended, for any reason whatsoever.

**Repair/Replace as Your Exclusive Remedy:** During this warranty period, Bosch or one of its authorized service providers will repair your Product without charge to you (subject to certain limitations stated herein) if your

Product proves to have been manufactured with a defect in materials or workmanship. If reasonable attempts to repair the Product have been made without success, then Bosch will replace your Product (upgraded models may be available to you, in Bosch's sole discretion, for an additional charge). All removed parts and components shall become the property of Bosch at its sole option. All replaced and/or repaired parts shall assume the identity of the original part for purposes of this warranty and this warranty shall not be extended with respect to such parts. Bosch's sole liability and responsibility hereunder is to repair manufacturer-defective Product only, using a Bosch-authorized service provider during normal business hours. For safety and property damage concerns, Bosch highly recommends that you do not attempt to repair the Product yourself, or use an un-authorized servicer; Bosch will have no responsibility or liability for repairs or work performed by a non-authorized servicer. If you choose to have someone other than an authorized service provider work on your Product, THIS WARRANTY WILL AUTOMATICALLY BECOME NULL AND VOID. Authorized service providers are those persons or companies that have been specially trained on Bosch products, and who possess, in Bosch's opinion, a superior reputation for customer service and technical ability (note that they are independent entities and are not agents, partners, affiliates or representatives of Bosch). Notwithstanding the foregoing, Bosch will not incur any liability, or have responsibility, for the Product if it is located in a remote area (more than 100 miles from an authorized service provider) or is reasonably inaccessible, hazardous, threatening, or treacherous locale, surroundings, or environment; in any such event, if you request, Bosch would still pay for labor and parts and ship the parts to the nearest authorized service provider, but you would still be fully liable and responsible for any travel time or other special charges by the service company, assuming they agree to make the service call.

### LENGTH OF WARRANTY

2 year Limited Warranty on Drive Motor from Date of Purchase

## SCOPE OF WARRANTY

Bosch will repair or replace, free of charge any motor or component part of the motor that proves defective under conditions of normal home use during the first 2 years from the date of purchase, labor charges excluded.

**Out of Warranty Product:** Bosch is under no obligation, by law or otherwise, to provide you with any concessions, including repairs, pro-rates, or Product replacement, once this warranty has expired.

**Warranty Exclusions:** The warranty coverage described herein excludes all defects or damage that are not the direct fault of Bosch, including without limitation, one or more of the following: (1) use of the Product in anything other than its normal customary and intended manner (including without limitation, any form of commercial use, use or storage of an indoor product outdoors, use of the Product in conjunction with air or water-going vessels); (2) any party's willful misconduct, negligence, misuse, abuse, accidents, neglect, improper operation, failure to maintain, improper or negligent installation, tampering, failure to follow operating instructions, mishandling, unauthorized service (including self-performed "fixing" or exploration of the appliance's internal workings); (3) adjustment, alteration or modification of any kind; (4) a failure to comply with any applicable state, local, city, or county electrical, plumbing and/or building codes, regulations, or laws, including failure to install the product in strict conformity with local fire and building codes and regulations; (5) ordinary wear and tear, spills of food, liquid, grease accumulations, or other substances that accumulate on, in, or around the Product; and (6) any external, elemental and/or environmental forces and factors, including without limitation, rain, wind, sand, floods, fires, mud slides, freezing temperatures, excessive moisture or extended exposure to humidity, lightning, power surges, structural failures surrounding the appliance, and acts of God. In no event shall Bosch have any liability or responsibility whatsoever for damage to surrounding property, including cabinetry, floors, ceilings, and other structures or objects around the Product. Also excluded from this warranty are scratches, nicks, minor dents, and cosmetic damages on external surfaces and exposed parts; Products on which the serial numbers have been altered, defaced, or removed; service visits to teach you how to use the Product, or visits where there is nothing wrong with the Product; correction of installation problems (you are solely responsible for any structure and setting for the Product, including all electrical, plumbing or other connecting facilities, for proper foundation/flooring, and for any alterations including without limitation cabinetry, walls, floors, shelving, etc.); and resetting of breakers or fuses. TO THE EXTENT ALLOWED BY LAW, THIS WARRANTY SETS OUT YOUR EXCLUSIVE REMEDIES WITH RESPECT TO PRODUCT, WHETHER THE CLAIM ARISES IN CONTRACT OR TORT (INCLUDING STRICT LIABILITY, OR NEGLIGENCE) OR OTHERWISE. THIS WARRANTY IS IN LIEU OF ALL OTHER WARRANTIES, WHETHER EXPRESS OR IMPLIED. ANY WARRANTY IMPLIED BY LAW, WHETHER FOR MERCHANTABILITY OR FITNESS FOR A PARTICULAR PURPOSE, OR OTHERWISE, SHALL BE EFFECTIVE ONLY FOR THE

PERIOD THAT THIS EXPRESS LIMITED WARRANTY IS EFFECTIVE. IN NO EVENT WILL THE MANUFACTURER BE LIABLE FOR CONSEQUENTIAL, SPECIAL, INCIDENTAL, INDIRECT, "BUSINESS LOSS", AND/OR PUNITIVE DAMAGES, LOSSES, OR EXPENSES, INCLUDING WITHOUT LIMITATION TIME AWAY FROM WORK, HOTELS AND/OR RESTAURANT MEALS, REMODELLING EXPENSES IN EXCESS OF DIRECT DAMAGES WHICH ARE DEFINITELY CAUSED EXCLUSIVELY BY Bosch, OR OTHERWISE. SOME STATES DO NOT ALLOW THE EXCLUSION OR LIMITATION OF INCIDENTAL OR CONSEQUENTIAL DAMAGES, AND SOME STATES DO NOT ALLOW LIMITATIONS ON HOW LONG IMPLIED WARRANTY LASTS, SO THE ABOVE LIMITATIONS MAY NOT APPLY TO YOU. THIS WARRANTY GIVES YOU SPECIFIC LEGAL RIGHTS, AND YOU MAY ALSO HAVE OTHER RIGHTS, WHICH VARY FROM STATE TO STATE. No attempt to alter, modify or amend this warranty shall be effective unless authorized in writing by an officer of BSH.

**How to Obtain Warranty Service:** To obtain warranty service for your Product, you should contact the nearest Bosch authorized service center.

**BSH Home Appliances Corporation** - 1901 Main Street, Suite 600, Irvine, CA 92614 / 800-944-2904







9000826642  
9309



**BOSCH**

1901 Main Street, Suite 600 • Irvine, CA 92614 • 1-800-944-2904  
[www.bosch-home.com](http://www.bosch-home.com) • © 2012 BSH Home Appliances