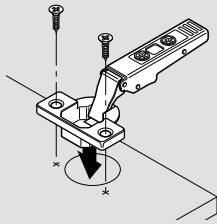


General specifications

Hinge-to-door attachment

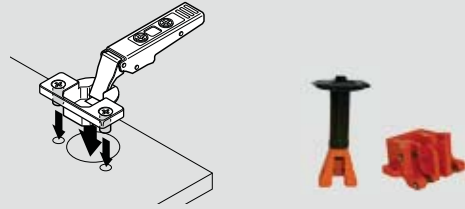
Screw-on

Use #6 wood screws



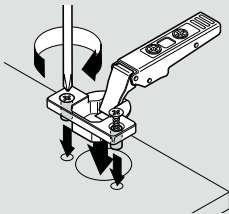
Press-in

Pre-attached Ø8 mm dowels installed with Blum knock-in tool or MINIPRESS with universal insertion ram



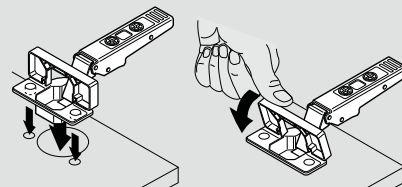
EXPANDO

Pre-attached Ø8 mm expanding dowels



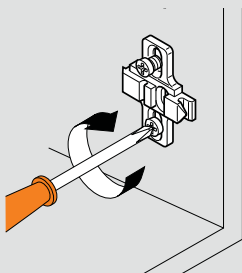
INSERTA

Tool-free attachment (cup expands into Ø35 mm hole)

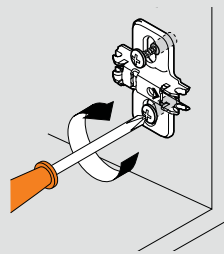


Mounting plate-to-cabinet

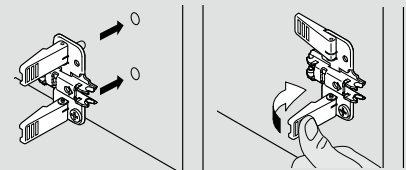
Screw-on



EXPANDO



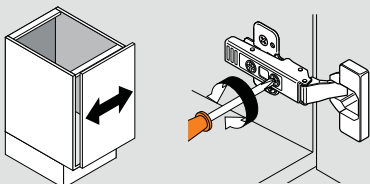
INSERTA



Three-dimensional adjustment

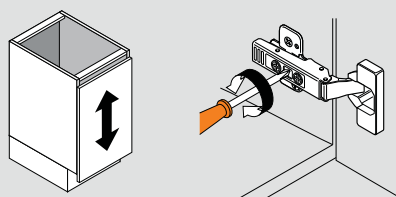
Side adjustment

Rotate front screw to increase or decrease door overlay +/- 2 mm.



Height adjustment

Rotate cam screw on mounting plate to adjust door position (+/- 2 mm). On non-cam mounting plates, loosen screws, adjust door and retighten screws.



Depth adjustment

Rotate rear Spiral Tech cam screw to adjust door position (+3 mm, -2 mm). For CLIP hinges, loosen rear screws, adjust door and retighten screws.

