

MOVENTO Installer's Guide



For detailed videos visit
youtube.com/bluminc



> For more information visit
youtube.com/bluminc

Dimensions in millimeters (inch equivalents as noted) – Technical specifications subject to change without notice For more information about installing Blum products, please visit blum.com or call 1-800-438-6788 for customer service. © 2018 Blum, Inc.



Step 1
First, touch to open drawer.



Step 2
With the drawer fully extended, reach under the drawer and squeeze the release levers for the locking devices. Then pull drawer straight out.



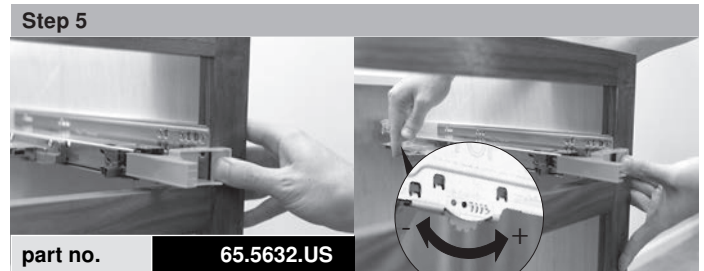
Step 3
Carefully remove the synchronization rod. Repeat these steps on the remaining drawers.

Visit youtube.com/bluminc for more information on how to remove the TIP-ON BLUMOTION synchronization rod video.



Step 4
Now install the cabinet, ensuring that the cabinet remains square and true.

For proper function, it is important that the cabinet does not become racked during installation.

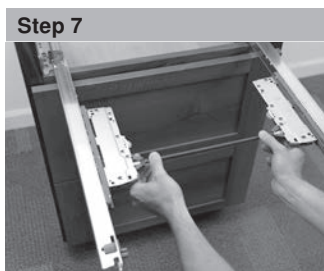


Step 5
Next, use the orange front gap template to ensure the front gap is set correctly for optimal function of TIP-ON BLUMOTION.

Visit youtube.com/bluminc to watch the TIP-ON BLUMOTION front gap template video.



Step 6
Touch to extend the right and left runner.



Step 7
Insert the synchronization rod.



Step 8
Insert the drawer.



Additional instructions -->
Repeat this process for the other drawers in the cabinet.

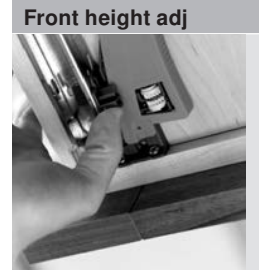
Drawer adjustments



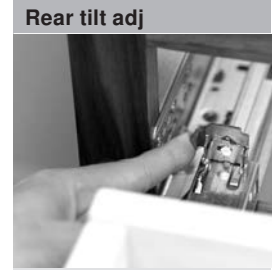
Front side-to-side adj
Rotate side-to-side adjustment left or right equally on both locking devices. Drawer front moves in the same direction as rotation.



Rear side-to-side adj
Rotate the rear side-to-side adjustment left or right to re-align the back of the drawer box with the front.



Front height adj
To raise front - Press up on adjustment tab and push toward back of drawer.

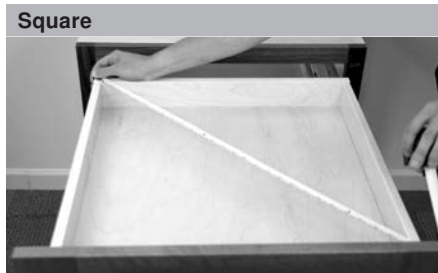


Rear tilt adj
To raise drawer back/tilt front - Rotate gray tilt adjustment lever on the rear of each runner.

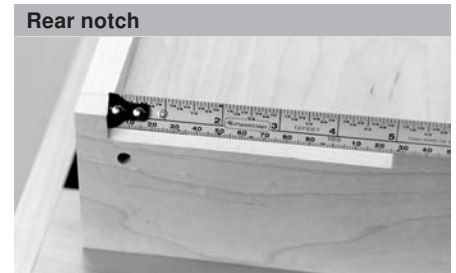
Troubleshooting



Level
Check to ensure that the runners are level, perpendicular to the face of the cabinet, and parallel to each other.



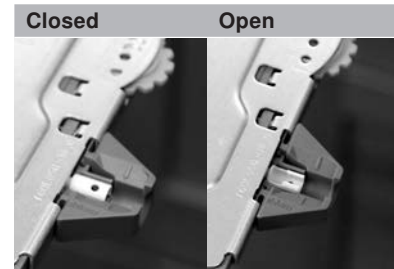
Square
Check drawer box squareness, either by measuring from inside corner to inside corner, or by using a framing square.



Rear notch
Measure the rear notches of the drawer. Make sure they meet Blum's specifications.

View TIP-ON BLUMOTION section of MOVENTO brochure for further instructions.

Helpful hints



Closed **Open**
To remove or insert the synchronization rod, the pinions must be put in the open position by touching the drawer front or runners to open them.



Broken synchronization adapter
If a synchronization adapter is broken, it can easily be replaced by simply sliding another in its place.

Front gap template alternative

TIP-ON BLUMOTION depth adjustment with a combination square

Top view

763/769 (X = runner setback + 32 (1-1/4"))
769R (X = runner setback + 17.5 (11/16"))

If a front gap template is not present on the job site, a combination square can be used to set the front gap. Please refer to the MOVENTO brochure for more information.