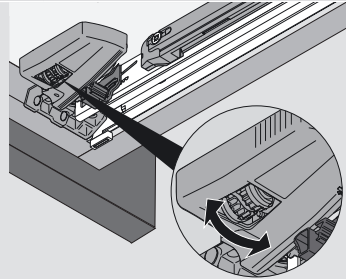


**Front side-to-side adjustment**

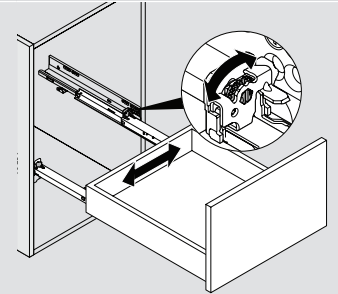
Rotate side-to-side adjustment left or right on both locking devices. Drawer front moves in the same direction as rotation.



Maximum 1.5 (1/16") to left or right (tool-free)

**Rear side-to-side adjustment**

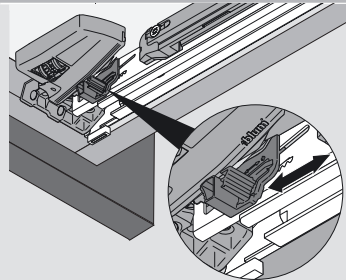
Rotate side-to-side adjustment left or right on the rear hook of the right hand runner. Drawer back moves in the same direction as rotation.



Maximum 1.5 (1/16") to left or right (tool-free)

**Height adjustment**

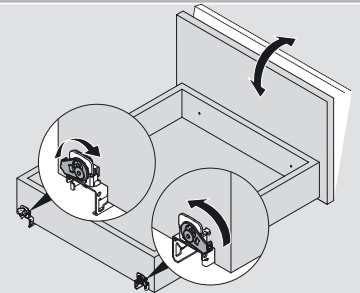
Press up on adjustment tab and push toward back of drawer.



Maximum 3 (1/8") rise of drawer front (tool-free)

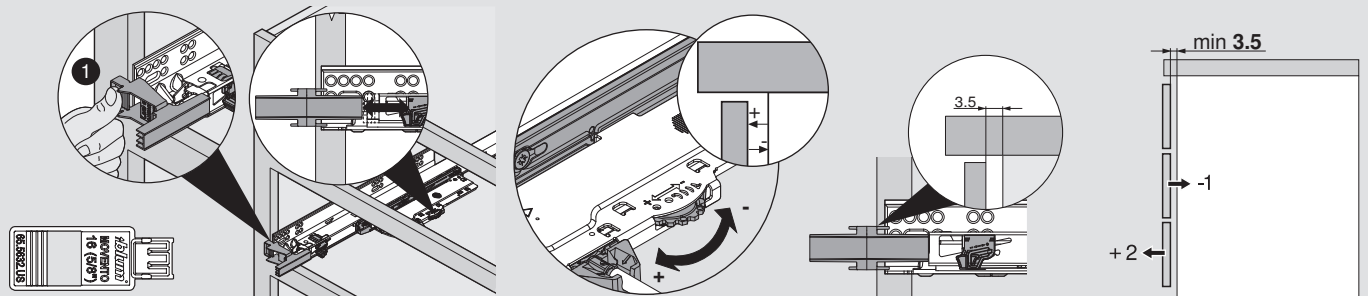
**Tilt adjustment**

Rotate the tilt adjustment lever on the rear of each runner to tilt the top of the drawer front forward.



Maximum 5 (3/16") rise of drawer back (tool-free)

**Depth adjustment with optional TIP-ON BLUMOTION**

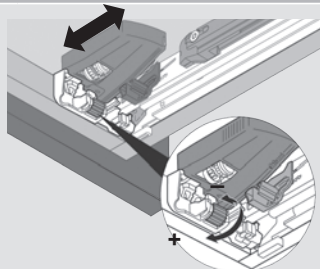


**NOTE:** Using the 65.5632.US front gap template is highly recommended. Adjust left and right runner.

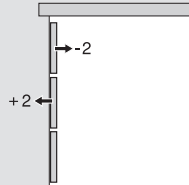
**NOTE:** If using 15/32" or 1/2" drawer thickness without T59.K010M, 13 (1/2") text should be visible instead.

**Front side-to-side adjustment**

Rotate the depth adjustment forward or backward. Drawer moves in the same direction as rotation.



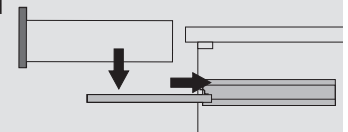
Maximum 2 (3/32") in or out (tool-free)



**NOTE:** Not for use with TIP-ON BLUMOTION.

**Insert drawer**

Extend the runners fully. Place the drawer on the runners and close. The locking devices automatically engage with the runners. Make adjustments if necessary.



**Drawer removal**

Squeeze orange release levers on locking devices. Pull drawer out and up.

