

Lift mechanism set	
	<ul style="list-style-type: none"> — Lift mechanism (qty 2) — #7 x 35 mm (1-3/8") wood screw (qty 10)
	Part no.
	20L2100.N5
	20L2300.N5
	20L2500.N5
	20L2700.N5
20L2900.N5	

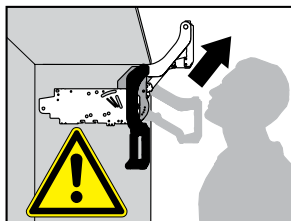
Cover set	
	<ul style="list-style-type: none"> — Right and left cover plate — Non-handed cover caps
	Part no.
Cover set	20L8000.N1

Arm assembly set		
	<ul style="list-style-type: none"> — Right and left arm assembly — Stabilizer rod cover cap (qty 2) 	
	Part no.	
	300 (11-13/16") — 349 (13-3/4")	20L3200.06
	350 (13-13/16") — 399 (15-13/16")	20L3500.06
	400 (15-3/4") — 550 (21-5/8")	20L3800.06
	450 (17-11/16") — 580 (22-13/16")	20L3900.06

Oval stabilier rod	
	<ul style="list-style-type: none"> — Oval stabilizer rod — Aluminum rod length 1061 (41-3/4"), cut to size — Length = interior cabinet opening minus 129 (4-13/16")
	Part no.
Oval stabilizer rod	20Q1061UA

NOTE: For cabinets wider than 48" two stabilizer rods and stabilizer rod connector set required

Narrow aluminum hardware set	
	<ul style="list-style-type: none"> — Arm assembly mounting plate (qty2) — 699.110 — Aluminum screw for narrow aluminum lever arm mounting plate (qty 8)
	Part no.
Narrow aluminum hardware set	20S4200A

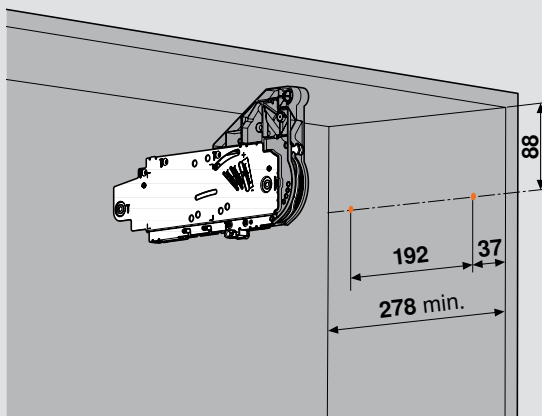


WARNING

Risk of injury from spring-loaded arm

- Do not push arm assembly down or leave in the down position
- Remove mechanism before installing or removing cabinet

1 Locating pin locations and minimum depth



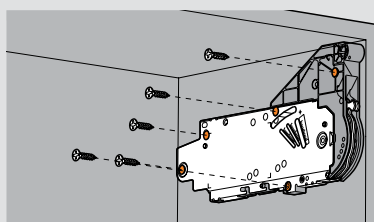
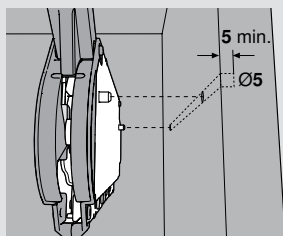
Part no.

Universal individual template is available for pre-boring 5 mm locating pins

65.1051.02

2 Attaching the lift mechanism

Align the lift mechanism in the cabinet using the 5 mm locator pins and attach the mechanism with the five wood screws provided.



#7 x 35 (1-3/8") wood screws (qty 5)

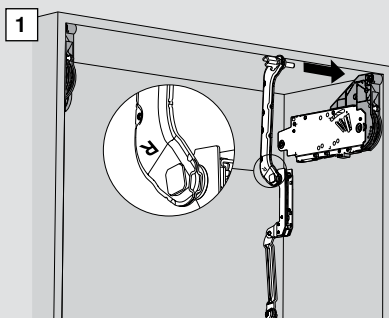
3 Attaching the arm assembly



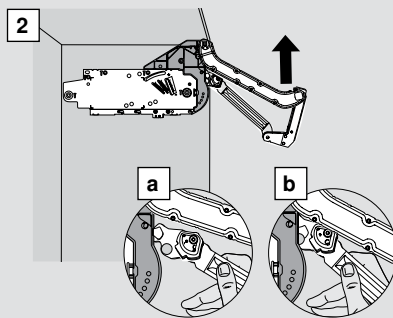
Risk of injury from spring loaded arm

NOTE: Before starting, see safety note on page 2

Find the right and left arm assemblies and match them to the correct side of the cabinet



Attach the arm assembly to the lift mechanism as shown in illustrations.

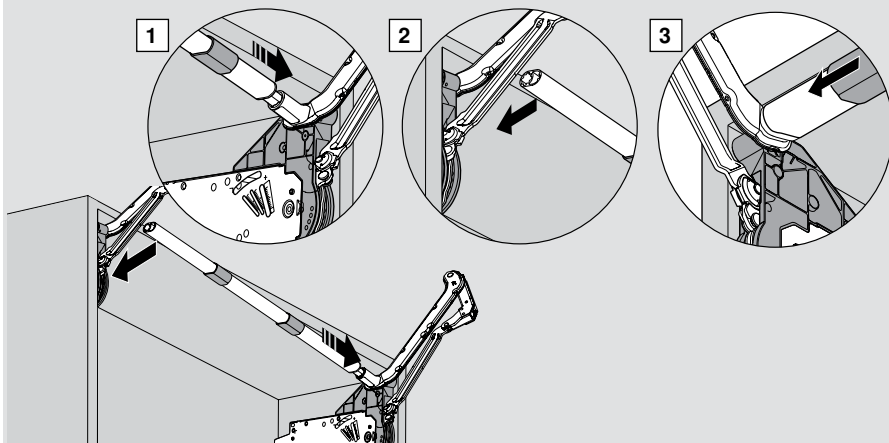


Lift up on the arm assembly to lock into place.

4 Attaching the stabilizer rod

Cut the stabilizer rod to fit the cabinet.

Length = Interior cabinet opening minus 129 (5-1/16")

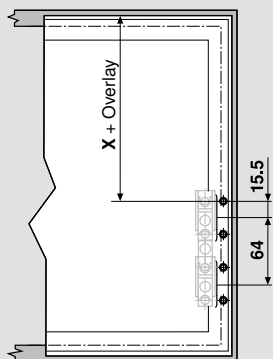


After cutting the rod to size, slide the stabilizer arm cover caps onto the rod. Attach the stabilizer rod to spring loaded arm assembly then slide stabilizer arm cover caps over rod on each end.

Attaching the mounting plates

5a Mounting plate position

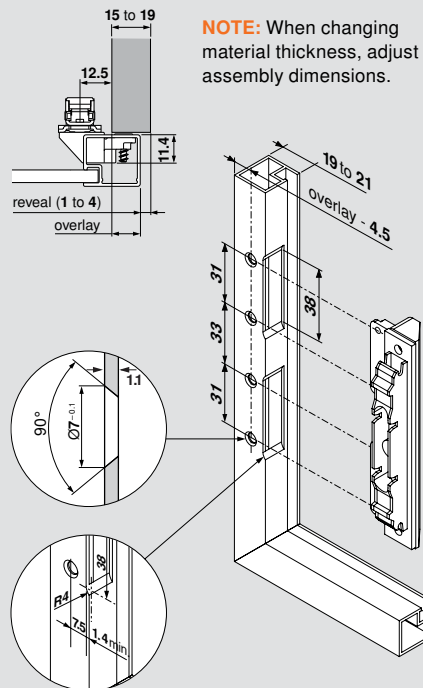
Attach the mounting plate to the door.



NOTE: All four screws must be installed

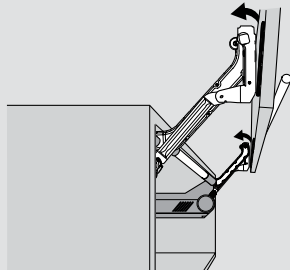
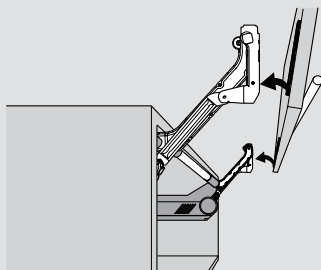
Arm assembly	X
20L3200.06	153.5
20L3500.06	203.5
20L3800.06	253.5
20L3900.06	303.5

5b Planning narrow alum. frames



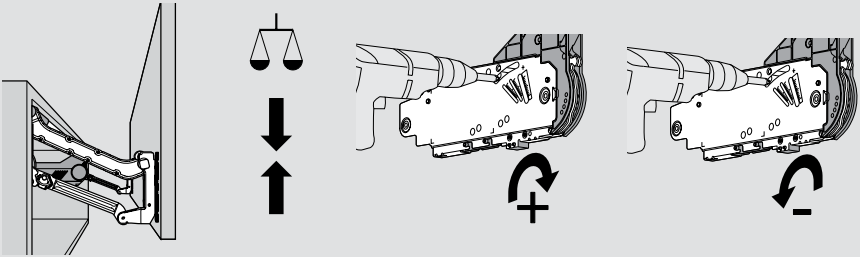
6 Attaching the door

Attach the door to the arm assembly using the CLIP mechanism.



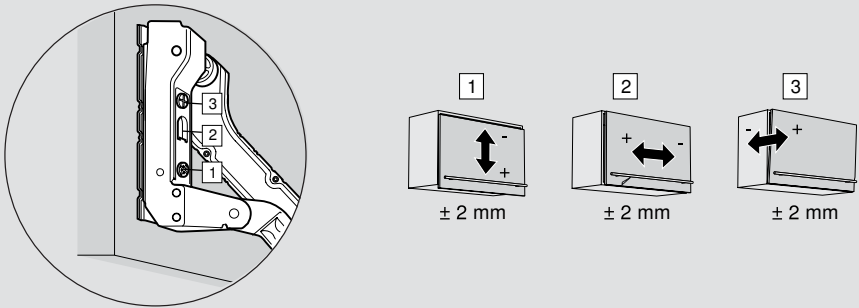
7 Adjusting the lift mechanism tension

Use a screw gun and the supplied #2x2 POZI driver bit to adjust the lift mechanism to the desired tension.



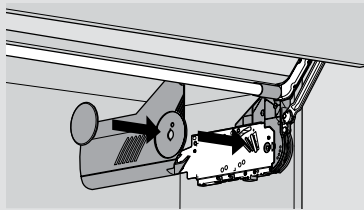
8 Adjusting the door

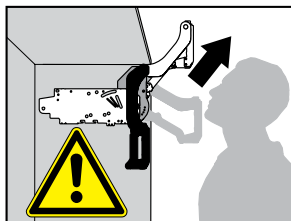
Use a POZI screwdriver to adjust cam adjustments for each of the three-dimensional adjustments. Tension should be the same on both lift mechanisms.



9 Attach covers

Snap the symmetrical cover caps on each cover plate. Place the left and right cover plates over the appropriate lift mechanisms and snap them in place.



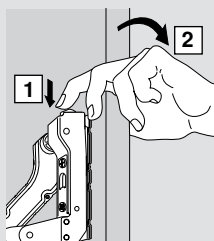


WARNING

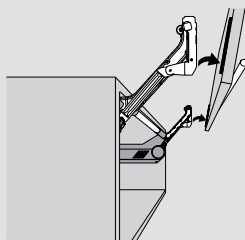
Risk of injury from spring-loaded arm

- Do not push arm assembly down or leave in the down position
- Remove mechanism before installing or removing cabinet

1 Removing the door



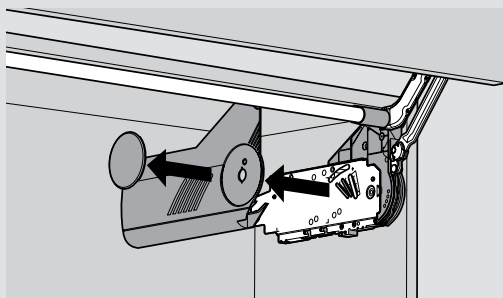
Open the door. Support the door with one hand and push down on tab to disengage the CLIP mechanisms on the arm assemblies of the mounting plates.



Lift the door off the mounting plates.

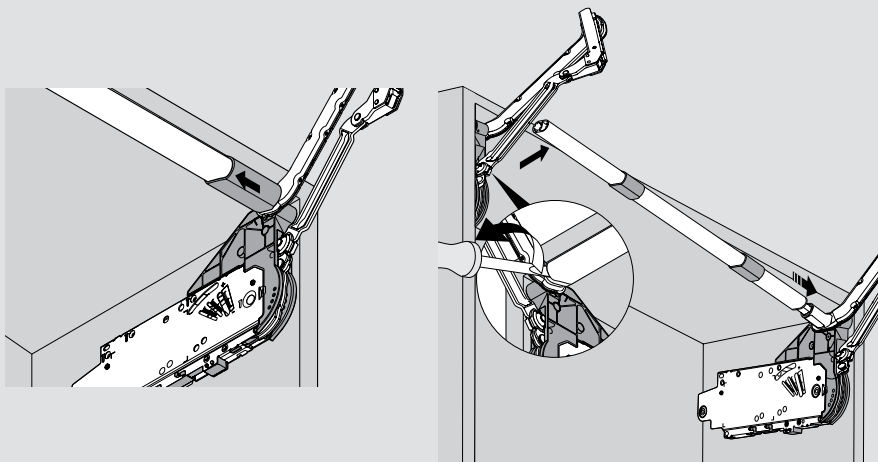
2 Remove the covers

Remove the cover caps and cover plate.

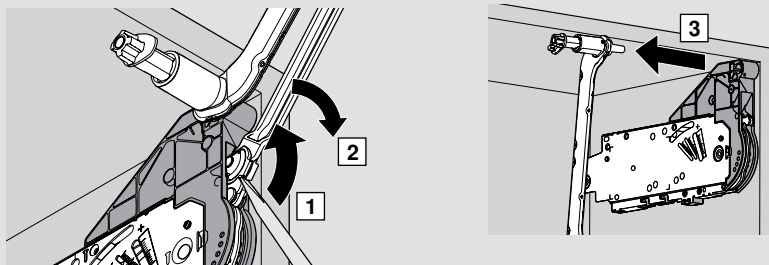


3 Remove the stabilizer rod

Pull back the stabilizer rod cover caps and remove the stabilizer rod from arm assembly.



4 Removing the arm assembly

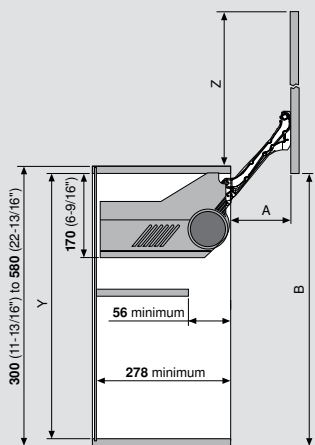


Use a screwdriver to disengage both arm assemblies. Remove arm assembly from mechanism.

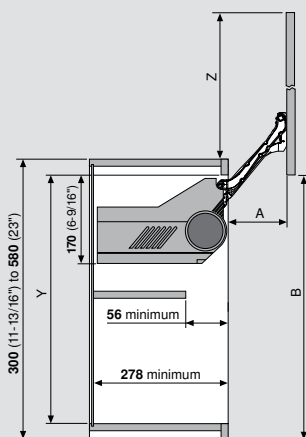
NOTE: Both tabs must be disengaged

Space requirements

Panel



Face frame



Panel and face frame

Arm assembly	Cabinet height	Min. Y	A	B *	Z *
20L3200.06	300 (11-13/16") – 349 (11-13/16")	262	114	257	257
20L3500.06	350 (13-13/16") – 399 (15-13/16")	312	146.5	345	345
20L3800.06	400 (15-3/4") – 550 (21-5/8")	362	178.5	433	433
20L3900.06	450 (17-11/16") – 580 (22-13/16")	412	211	522	522

*based on top and bottom reveals of 0 mm – B and Z dimensions can be ± 15 mm due to range of adjustment, overpush and accuracy of installation

	Inch	mm	
	1/32	.031	1
	1/16	.063	1.5
	3/32	.094	2
	1/8	.125	3
	5/32	.156	4
	3/16	.188	5
	7/32	.219	5.5
	1/4	.25	6
	9/32	.281	7
	5/16	.313	8
	11/32	.344	9
	3/8	.375	9.5
	13/32	.406	10
	7/16	.438	11
	15/32	.469	12
	1/2	.5	13
	17/32	.531	13.5
	9/16	.563	14
	19/32	.594	15
	5/8	.625	16
	21/32	.656	17
	11/16	.688	17.5
	23/32	.719	18
	3/4	.75	19
	25/32	.781	20
	13/16	.813	20.5
	27/32	.844	21
	7/8	.875	22
	29/32	.906	23
	15/16	.938	24
	31/32	.969	24.5
	1	1	25.4