



## Sink Specifications

Color	SKU
Satin brushed finish	443145

## Design and Planning Tips

- Min cabinet size: 24 in

What is included:  
Installation instructions  
Cut-out template  
Limited Lifetime Warranty

Drain hole compatible with 3.5" strainers or waste flanges

Depending on cabinet construction, a different cabinet size may be required.

Nested SKU: 203955

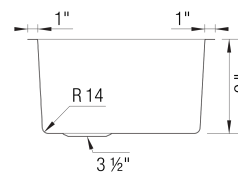
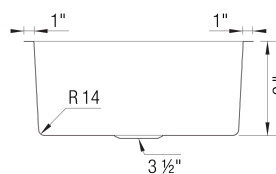
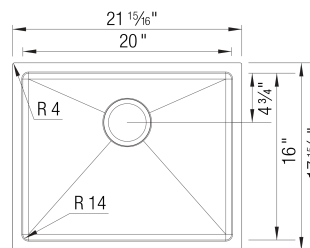
## Codes & Standards

ASME A112.19.3-2017/CSA B45.4-17

## Optional Accessories

Sink clips	212594
Sink Grid	235958
Colander	224387
CapFlow Strainer Cover	517666
Ash Compound Cutting Board	231609
Glass Cutting Board	224390
Elevated Grid	231608

## QUATRUS R15 Small Stainless steel Satin brushed finish



## Warranty

BLANCO offers a limited lifetime warranty on all sinks and faucets, as well as a one-year warranty on all custom accessories.

## Code/Standards Compliance

BLANCO sinks and faucets are third-party tested and certified to standards and listed by applicable certification bodies. For more information on individual product listings, contact our office or listing organization.



View our how-to videos to learn more about installing and caring for BLANCO products:  
<https://www.blanco.com/us-en/service/how-to-videos/how-to-videos-for-sinks/>

Questions? Contact us today



BLANCO America, Inc.  
110 Mount Holly By-Pass  
Lumberton, NJ 08048

Phone & Fax  
Phone: 888-668-6201  
Fax: 609-668-6211

While BLANCO endeavors to provide accurate information, all dimensions are nominal, cannot be guaranteed, and are subject to change or cancellation. BLANCO assumes no responsibility for use of superseded or voided specifications.