



Sink Specifications

Color	SKU
brushed finish	522215

Design and Planning Tips

- Min cabinet size: 27 in
- Apron front height: 9 in

What is included:
Installation instructions
Limited Lifetime Warranty

Custom cabinet installation required.
Cubed weight: 111 lbs.

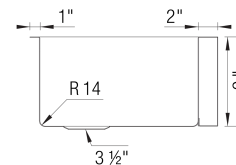
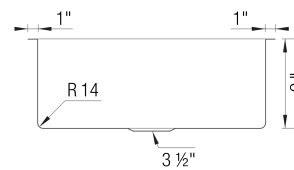
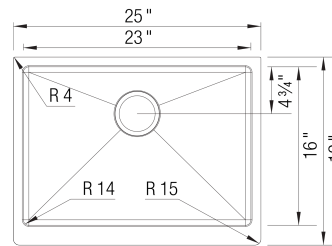
Codes & Standards

ASME A112.19.3-2017/CSA B45.4-17

Optional Accessories

Colander	224387
Ash Compound Cutting Board	231609
Board	
Glass Cutting Board	224390
CapFlow Strainer Cover	517666

QUATRUS R15 Apron Medium Stainless steel brushed finish



Warranty

BLANCO offers a limited lifetime warranty on all sinks and faucets, as well as a one-year warranty on all custom accessories.

Code/Standards Compliance

BLANCO sinks and faucets are third-party tested and certified to standards and listed by applicable certification bodies. For more information on individual product listings, contact our office or listing organization.



View our how-to videos to learn more about installing and caring for BLANCO products:
<https://www.blanco.com/us-en/service/how-to-videos/how-to-videos-for-sinks/>

Questions? Contact us today



BLANCO America, Inc.
110 Mount Holly By-Pass
Lumberton, NJ 08048

Phone & Fax
Phone: 888-668-6201
Fax: 609-668-6211

While BLANCO endeavors to provide accurate information, all dimensions are nominal, cannot be guaranteed, and are subject to change or cancellation. BLANCO assumes no responsibility for use of superseded or voided specifications.