



Wall Mounting Instructions



Before you start... We recommend the following:

Select a suitable position on the wall with access to a power supply.

Select a wall/vertical face with structural integrity for fixing the ironing board. Allow for weight of ironing board supported by 5 screws against wall. eg. In the case of wooden wall, ensure you have located a vertical wall stud.



Ensure that there is adequate room to rotate the ironing board when in use. eg. 4 1/2" clearance radius as board swivels.

Make sure the power supply is within reach of the ironing board.

1 Wall Plate Mounting

- If structural wall is wooden pre-drill a 5/32" hole, at desired height off the floor at center of the wall stud.
- For masonry walls, drill a 1/4" hole in the wall at the same height and insert wall plug.
- Position the wall plate with a 1 1/2" long screw through the center screw hole in the wall plate. Mark inner 4 holes for wood or outer 4 holes for masonry.

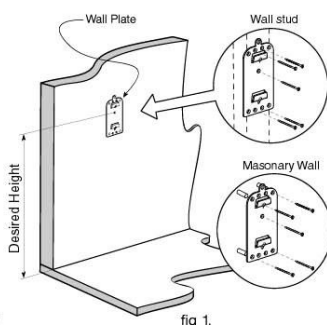


fig 1.



Use a spirit level to align wall plate vertically.

- Remove wall plate, drill remaining marked holes and re-mounting wall plate.

2 Ironing Board Mounting

- Align the ironing board wall unit over the wall plate and lower into position.



Be careful not to squash fingers between plastic on underside when pivoting into position.

- Press firmly down in place. The self locking design will ensure constant support and stability.
- Once in place, fit the lock screw (item g) into the top screw hole of the wall plate using the supplied Allen key tool.

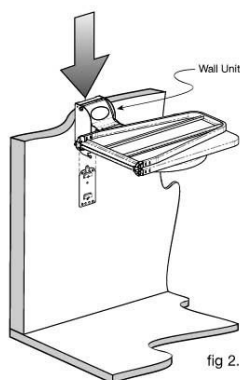
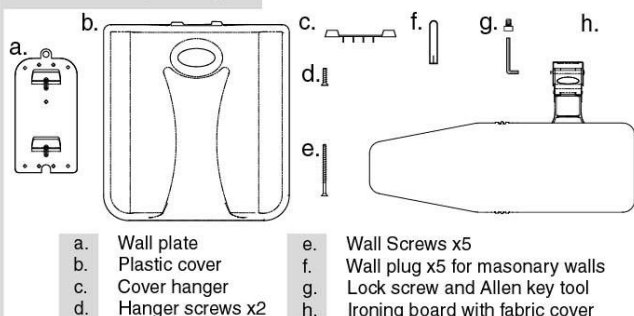


fig 2.

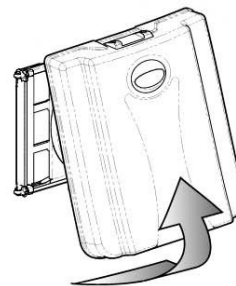
Contents of package:



User Instructions

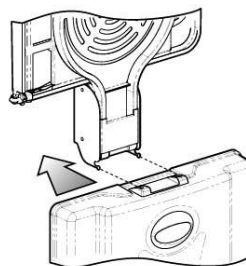
1

Remove plastic cover from wall unit. Place left hand in recess on underside of cover and right hand on contoured front handle. With left hand pull outwards from underside while supporting cover with front handle.



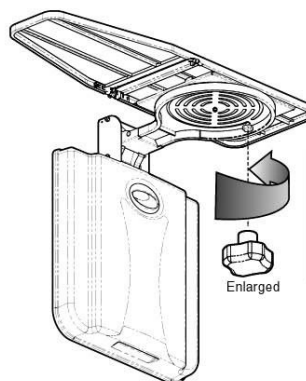
2

Locate and align the top hanger recesses on the cover (item c) with the hooks on the wall bracket to suspend cover.



3

Grip top of ironing board to pull into horizontal position. Unfold ironing board halves.



4

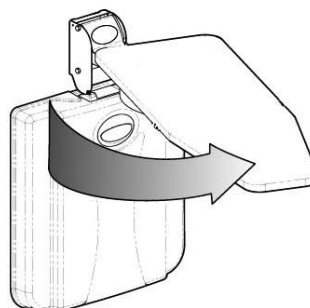
Loosen knob on underside of main body to swivel ironing board away from wall.



Enlarged

5

Choose ironing board position. Tighten knob on underside.



6

Remember to fold board, reposition base and tighten knob before lifting to vertical position when finished. Replace cover as shown.

