

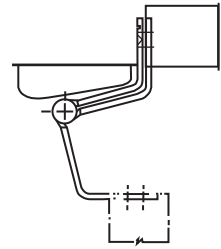
5 KNUCKLE SWING CLEAR HINGES

Standard Weight Plain Bearing “Swing Clear” Full Mortise



F248 – (ANSI A8123) Steel – polished and plated or phosphated and prime coated for painting

- Equipped with easily seated non-rising pins
- Reversible flush tips and pins
- Ideal for remodeling or new construction
- Available for full mortise application on square edge doors only
- Designed to replace existing 3 1/2" (89mm) or 4" (102mm) hinges for Swing Clear openings (some modification of preparation may be required for residential use)
- Designed to swing doors completely clear of the opening when door is opened 95°



Class Number	Size Length of Joint		Gauge of Metal		Flat Head Wood Screws/ Per Piece	Quantity Per Box	Quantity Per Case	Case Weight	
	Inches	(mm)	Inches	(mm)				Lbs.	(Kg)
F248	3 1/2	(89)	.123	(3.1)	6-10 X 1	2 EA.	20 EA.	16	(7)
	4	(102)	.130	(3.3)	8-12 X 1 1/4	2 EA.	20 EA.	24	(11)

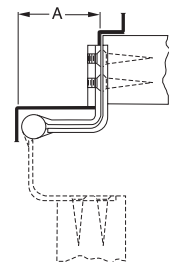
Standard Weight Ball Bearing “Swing Clear” Full Mortise



FBB248 – (ANSI A8122) } Steel –
FBB258 – (ANSI A8122) } polished and plated or phosphated and prime coated for painting

STSFBB248 – (ANSI A5122) } Stainless Steel –
STSFBB258 – (ANSI A5122) } highly polished or satin finish

- Reversible flush tips and pins
- Ideal for remodeling or new construction
- Specify FBB248 and STSFBB248 for full mortise application on square edge doors
- Specify FBB258 and STSFBB258 for full mortise application on bevel edge doors
- Designed to swing doors completely clear of the opening when door is opened 90°
- Equipped with two Stanley permanently lubricated non-detachable ball bearings
- Hinges can be furnished with hospital tips (HT)



FBB248 (Shown) and STSFBB248
{For square edge doors}

FBB258 and STSFBB258
{For doors beveled 1/8" in 2" (3.2 in 51mm)}

Class Number	Size Length of Joint		Minimum Clearance Required Dimensions "A"		Gauge of Metal		Flat Head Screws/ Per Piece		Quantity Per Box	Quantity Per Case	Case Weight	
	inches	(mm)	inches	(mm)	inches	(mm)	Frame Leaf-Machine	Door Leaf-Wood			Lbs.	(Kg)
FBB248, STSFBB248	4 1/2	(114)	2 1/8	(54)	.134	(3.4)	4-12-24 X 1 1/2	4-12 X 1 1/4	3 EA.	24 EA.	36	(17)
FBB258, STSFBB258	4 1/2	(114)	2 1/8	(54)	.134	(3.4)	4-12-24 X 1 1/2	4-12 X 1 1/4	3 EA.	24 EA.	36	(17)

5 KNUCKLE SWING CLEAR HINGES

Heavy Weight Ball Bearing "Swing Clear"



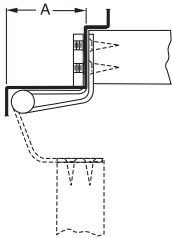
FBB268 – (ANSI A8121)
FBB278† – (ANSI A8121)
FBB269 – (ANSI A8421)
FBB264 – (ANSI A8221)
FBB274† – (ANSI A8221)
FBB266 – (ANSI A8321)

Steel –
 polished and plated or
 phosphated and prime
 coated for painting

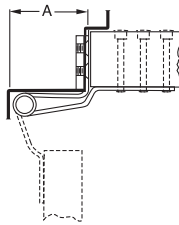
STSFBB268 – (ANSI A5121)
STSFBB278† – (ANSI A5121)
STSFBB269 – (ANSI A5421)
STSFBB264 – (ANSI A5221)
STSFBB274† – (ANSI A5221)
STSFBB266 – (ANSI A5321)

Stainless Steel –
 highly polished
 or satin finish

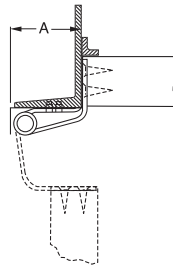
- For corridor doors to patients' rooms, operating rooms, emergency rooms, or wherever conditions require a completely clear opening in hospitals, institutions or public buildings
- Designed to swing door completely clear of the opening when door is opened 95°
- Consult factory for hinges available to clear 90°
- Equipped with four Stanley permanently lubricated non-detachable ball bearings
- Pins in nonferrous hinges are stainless steel
- Heavy weight gauges increase available bearing surface area for maximum friction reduction
- Hinges can be furnished with hospital tips
- Full surface and half surface hinges packed with flat head machine screws and grommet nuts for door leaf, specify door thickness if other than 1 3/4"
- Consider using a back plate on full surface and half surface hinges
- For half mortise and full surface hinges to fit narrow metal frames, consult factory
- Reversible flush tips and pins



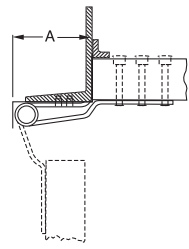
Full Mortise - FBB268 and STSFBB268
 {For square edge doors} (shown)
FBB278† and STSFBB278†
 {For doors beveled 1/8" in 2" (3.2 in 51mm)}



Half Surface
FBB269
 and **STSFBB269**



Half Mortise
 For Channel Iron Frames
FBB264 and STSFBB264
 {For square edge doors} (shown)
FBB274† and STSFBB274†
 {For doors beveled 1/8" in 2" (3.2 in 51mm)}



Full Surface
 For Channel Iron Frames
FBB266 and STSFBB266

Class Number	Size Length of Joint		Minimum Clearance Required Dimensions "A"		Gauge of Metal		Flat Head Screws/ Per Piece		Quantity Per Box	Quantity Per Case	Case Weight	
	inches	(mm)	inches	(mm)	inches	(mm)	Frame Leaf-Machine	Door Leaf-Wood			Lbs.	(Kg)
FBB268, STSFBB268	4 1/2	(114)	2 1/8	(54)	.180	(4.6)	4-12-24 X 1/2	4-12 X 1 1/4 W.S	3 EA.	15 EA.	31	(14)
FBB268, STSFBB268	5	(127)	2 1/8	(54)	.190	(4.8)	4-12-24 X 1/2	4-12 X 1 1/4 W.S	3 EA.	15 EA.	35	(16)
FBB278†, STSFBB278†	4 1/2	(114)	2 1/8	(54)	.190	(4.8)	4-12-24 X 1/2	4-12 X 1 1/4 W.S	3 EA.	15 EA.	31	(14)
FBB278†, STSFBB278†	5	(127)	2 1/8	(54)	.190	(4.8)	4-12-24 X 1/2	4-12 X 1 1/4 W.S	3 EA.	15 EA.	35	(16)
FBB269, STSFBB269	5	(127)	2 1/8	(54)	.190	(4.8)	4-12-24 X 1/2	5-1/4-20 X 1 1/4 M.S.*	3 EA.	9	(4)
FBB264, STSFBB264	5	(127)	2 1/8	(54)	.190	(4.8)	4-12-24 X 1/2	4-12 X 1 1/4 W.S	3 EA.	15 EA.	35	(16)
FBB274† STSFBB274	5	(127)	2 1/8	(54)	.190	(4.8)	4-12-24 X 1/2	4-12 X 1 1/4 W.S	3 EA.	15 EA.	35	(16)
FBB266, STSFBB266	5	(127)	2 1/8	(54)	.190	(4.8)	4-12-24 X 1/2	5-1/4-20 X 1 1/4 M.S.*	3 EA.	15 EA.	35	(16)

* Furnished with through-bolts and grommet nuts.

† For doors beveled 1/8" IN 2" (3.2MM IN 51 MM) on hinge side.

For frame and door leaf dimensions refer to template furnished on request. If door closers, friction or overhead door holders are to be used in conjunction with these hinges, consult manufacturer of the device to be used for application details