



## Rim Type

### Performance Features

- Tested and certified to significantly exceed 500,000 cycles required for Grade 1 certification.
- Field sizeable. 36" to 32" door application (91.44cm-81.28cm).
- Consistent styling allows for harmonization with other STANLEY Commercial Hardware products.

### Certifications



- ANSI/BHMA A156.3 – Grade 1.
- UL/cUL listed (3 hours) for "A" label door applications (8' x 8')
- ANSI A117.1 Section 404.2.6 Accessibility Code (ADA Compliant)
- California Administrative Code Title 24 (for Sierra and Summit lever trims)

### Product Specifications

- Handing – All QED300 Series Exit Devices are non-handed.
- Door thickness – 1 3/4" standard (44.5mm).
- Latch bolt – Stainless steel 3/4" throw (19mm).
- Strike – Stainless steel body with plated steel roller standard fire-rated stainless steel strike, with stainless steel roller standard on QED313.
- Fasteners – Wood and machine screws standard. Sex bolts optional. (Standard on fire-rated device).
- Head cap & end cap – Zinc die-cast.
- Trims – Sierra, Summit and Slate styles available.  
Escutcheon offering – Dummy, passage, keyed, night latch.  
Pull plate offering – Dummy, thumbpiece, night latch, flat plate.
- Stile width – 3 7/8" minimum (98mm).
- Dogging – Hex key dogging and cylinder dogging available.
- Standard backset – 2 1/4" (57mm) to face of doorstop.

### Keying

- Offered with the following keyway options: BF-SFIC "F", KW-Kwikset, WE-Weiser, SC-Schlage, GA-Yale, LA-Sargent & LC-Less Cylinder.  
Consult factory for other cylinder options and for details on Mortise and Rim Cylinder requirements.

### Warranty

- Lifetime Mechanical and 3-year finish



QED311



Sierra (E)

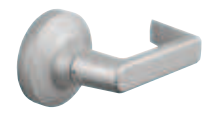
Summit (M)

Slate (A)

Thumbpiece Plate (L)



QRT360 M



QRT320 E

### Functions

Series	Description
QED311	Rim Hex Dog
QED312	Rim Cylinder Dog
QED313	Rim Fire-Rated

### Exit Trim Offerings

ANSI	Series	Description
02	QET320	Dummy Lever Escutcheon
02	QET325	Dummy Pull Plate
14	QET330	Passage Lever Escutcheon
08	QET360	Keyed Lever Escutcheon
05	QET365	Thumbpiece
02	QET367	Dummy Thumbpiece Pull Escutcheon
03	QET370	Night Latch Lever Escutcheon
03	QET375	Night Latch Pull
—	QET377	Gull Wing Pull Escutcheon
01	QET390	Flat Plate
02	QRT320	Dummy Round Rose Lever
14	QRT330	Passage Round Rose Lever
08	QRT360	Keyed Round Rose Lever
03	QRT370	Night Latch Round Rose Lever

### Finishes

BHMA	Description
689	Painted Aluminum
690	Painted Duranodic Bronze

### Surface Vertical Rod (SVR) Type

#### Performance Features

- Tested and certified to significantly exceed 500,000 cycles required for Grade 1 certification.
- Field sizeable. 36" to 32" door application (91.44cm-81.28cm).
- Thru-bolt trim design for increased security and durability.
- Consistent styling allows for harmonization with other STANLEY Commercial Hardware products.

#### Certifications



- ANSI/BHMA A156.3 – Grade 1.
- UL/cUL listed (1.5 hours) for "A" label door applications (8' x 8')
- ANSI A117.1 Section 404.2.6 Accessibility Code (ADA Compliant)
- California Administrative Code Title 24 (for Sierra and Summit lever trims)

#### Product Specifications

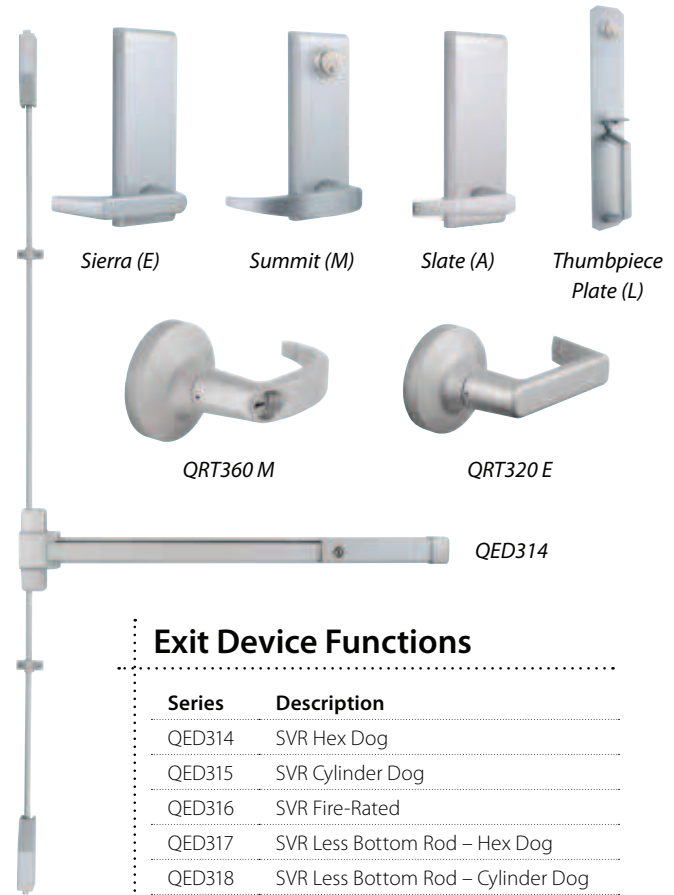
- Handing – All QED300 Series Exit Devices are non-handed.
- Door thickness – 1 3/4" standard (44.5mm).
- Door height – 7' standard with 84" rods; 8' optional with 96" rods (2.1336m x 2.438m).
- Latch bolt – 1/2" (12.7mm) throw on top latch; 3/8" (9.53mm) on bottom latch.
- Fasteners – Wood and machine screws standard. Sex bolts optional. (Standard on fire-rated device).
- Head cap & end cap – Zinc die-cast.
- Trims – Sierra, Summit and Slate styles available. Escutcheon offering – Dummy, passage, keyed, night latch. Pull plate offering – Dummy, thumbpiece, night latch, flat plate.
- Stile width – 3 1/2" minimum (89mm).
- Dogging – Hex key dogging and cylinder dogging available.
- Standard backset – 2 1/4" (57mm) to face of doorstop.
- QED319 includes bottom fire latch.

#### Keying

- Offered with the following keyway options: BF-SFIC "F", KW-Kwikset, WE-Weiser, SC-Schlage, GA-Yale, LA-Sargent & LC-Less Cylinder. Consult factory for other cylinder options and for details on Mortise and Rim Cylinder requirements.

#### Warranty

- Lifetime Mechanical and 3-year finish



#### Exit Device Functions

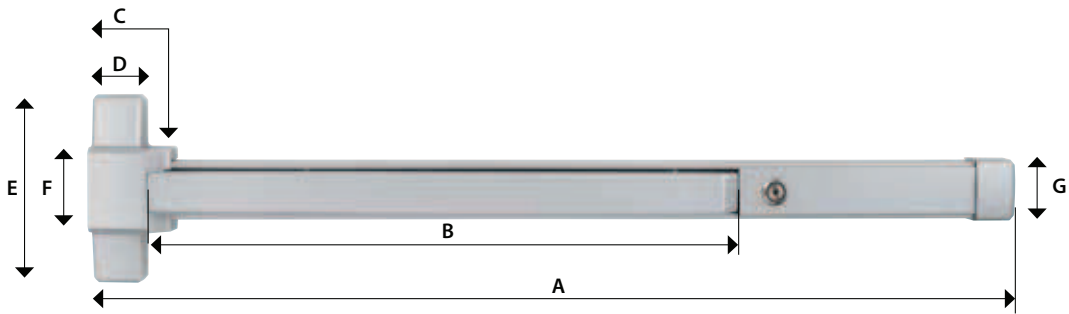
Series	Description
QED314	SVR Hex Dog
QED315	SVR Cylinder Dog
QED316	SVR Fire-Rated
QED317	SVR Less Bottom Rod – Hex Dog
QED318	SVR Less Bottom Rod – Cylinder Dog
QED319	SVR Less Bottom Rod – Fire-Rated

#### Exit Trim Offerings

ANSI	Series	Description
02	QET320	Dummy Lever Escutcheon
02	QET325	Dummy Pull Plate
14	QET330	Passage Lever Escutcheon
08	QET360	Keyed Lever Escutcheon
05	QET365	Thumbpiece
02	QET367	Dummy Thumbpiece Pull Escutcheon
03	QET370	Night Latch Lever Escutcheon
03	QET375	Night Latch Pull
01	QET390	Flat Plate
02	QRT320	Dummy Round Rose Lever
14	QRT330	Passage Round Rose Lever
08	QRT360	Keyed Round Rose Lever
03	QRT370	Night Latch Round Rose Lever

#### Finishes

BHMA	Description
689	Painted Aluminum
690	Painted Duranodic Bronze



QED300 Series	36" Device							
	Minimum Door Width	Device Length	Pushpad Length	Head Cap Length	Head Cap Length	Head Cap Width	Head Cap Width	End Cap Length
Measurement		A	B	C	D	E	F	G
Panic Rated (with Dogging)	30"	27"	19"	2.75"	1.75"	6.25"	3"	2"
	762mm	685.80mm	482.60mm	69.90mm	44.50mm	158.80mm	76.20mm	50.80mm
Fire-Rated or Panic with Dogging Removed	28"	25"	19"	2.75"	1.75"	6.25"	3"	2"
	711.20mm	635mm	482.60mm	69.90mm	44.50mm	158.80mm	76.20mm	50.80mm

Model/Series	Functions	Case Qty
QED311	Rim Hex Dog	4
QED312	Rim Cylinder Dog	4
QED313	Rim Fire-Rated	4
QED314	SVR Hex Dog	4
QED315	SVR Cylinder Dog	4
QED316	SVR Fire-Rated	4
QED317	SVR Less Bottom Rod – Hex Dog	4
QED318	SVR Less Bottom Rod – Cylinder Dog	4
QED319	SVR Less Bottom Rod – Fire-Rated (Includes Auxiliary Bottom Fire Latch)	4

**Other Options**

8FT	Vertical rod kit for 8FT door application
48"	48" Device

11	Rim Hex Dog
12	Rim Cylinder Dog
13	Rim Fire-Rated
14	SVR Hex Dog
15	SVR Cylinder Dog
16	SVR Fire-Rated
17	SVR LBR – Hex Dog
18	SVR LBR – Cylinder Dog
19	SVR LBR – Fire-Rated

7FT	7 ft Rod
8FT	8 ft Rod

KW	Kwikset "KW"
WE	Weiser "E"
SC	Schlage "C"
GA	Yale "GA"
LA	Sargent "LA"
BF	SFIC "F"
LC	Less Cylinder

Base Part Number							
Series	Function	Size	Height	Finish	Keyway	Keying	Notes
<b>QED3</b>	<b>15</b>	<b>36"</b>	<b>7FT</b>	<b>689</b>	<b>KW</b>	<b>KD</b>	<b>XXXX</b>

QED3xx	Grade 1 Standard-Duty Exit Device
--------	-----------------------------------

36"	36" Device	689	Painted Aluminum
48"	48" Device	690	Painted Duranodic Bronze

KD	Keyed Different
KA	Keyed Alike
CK	Construction Keyed
CMK	Construction Master Keyed
MAIS	Maison Keyed
MK	Master Keyed
GMK	Grand Master Keyed
GGMK	Great Grand Master Keyed
ZB	Zero Bitted

### Example

If you ordered: QED315 36" 7FT 689 KW KD

You would get: Grade 1 Standard-Duty Surface Vertical Rod Exit Device 36", with Cylinder Dogging, for a 7' height, in Painted Aluminum finish. Kwikset Keyway, Keyed Different.