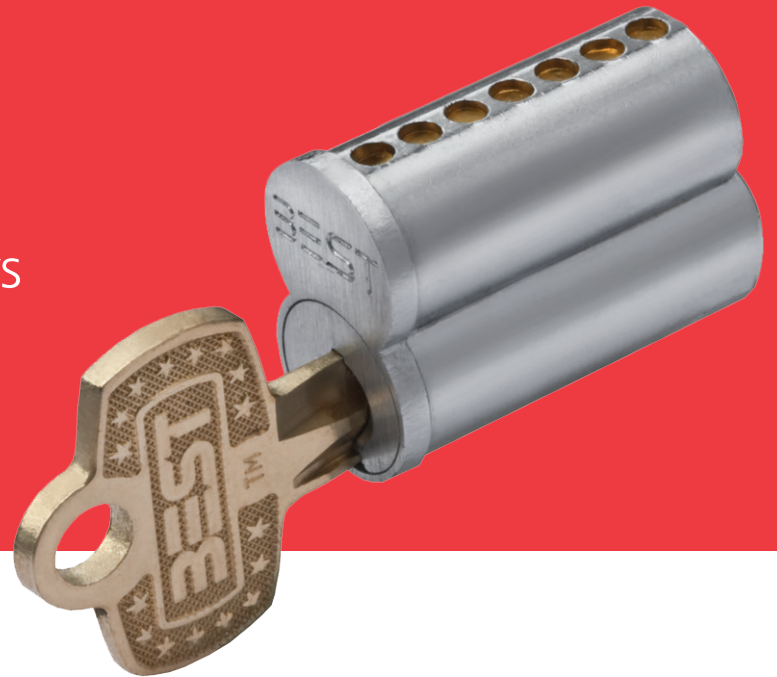


BEST Standard Cores and Keys



Industry-leading quality, flexibility, and performance.

BEST's Standard Cores and Keys draw on the legacy of quality and expertise that keep our products on the forefront of the industry. Held to our strict internal standards for materials, workmanship, and innovation, Standard Cores and Keys incorporate an attention to detail that makes them easy to install and retrofit while maintaining exceptional security and performance over time.





Exceptional solutions for more applications.

Our Standard Cores and Keys stand at the pinnacle of mechanical locking solutions, with features that exceed industry standards and deliver results in a wide range of applications.

| BEST Standard Cores and Keys Specifications | |
|---|--|
| Certifications | ANSI/BHMA A156.5 Series—Grade 1 BAA & TAA compliant |
| Product Specifications | Core: Brass alloy Key: Nickel silver SFIC Construction Core available |
| Keying | 5-pin SFIC 6-pin SFIC 7-pin SFIC 29 unique keyways |
| All Finishes | 605: Bright Brass 606: Satin Brass 611: Bright Bronze 612: Satin Bronze 613: Oil-rubbed Bronze 625: Bright Chrome 626: Satin Chrome 690: Dark Bronze Coated |
| Warranties | Three-year limited |

Featured Finishes



605: Bright Brass



606: Satin Brass



612: Satin Bronze



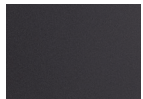
613: Oil-rubbed
Bronze



625: Bright Chrome



626: Satin Chrome



690: Dark Bronze
Coated

Features

BEST Standard Cores and Keys

- **Enhanced integrity.** We manufacture Standard Cores and Keys with tighter tolerances for greater lock integrity and the highest mechanical security.
- **Industry-leading quality.** Each Standard offering is subject to our stringent internal quality requirements, which meet or exceed industry standards.
- **Long-term durability.** Brass alloy core construction and nickel silver keys and pins result in reliable performance over time.
- **Easy retrofit.** BEST's small format interchangeable cores make retrofitting and rekeying simple. Individually capped core pin chambers reduce repinning labor.
- **More flexibility.** BEST Standard Cores and Keys 5-, 6-, and 7-pin SFIC options allow for more flexibility. Masterkeyed shear lines allow multi-level access.

BEST Standard Cores and Keys deliver exceptional quality and performance for flexible solutions that fit a variety of applications.