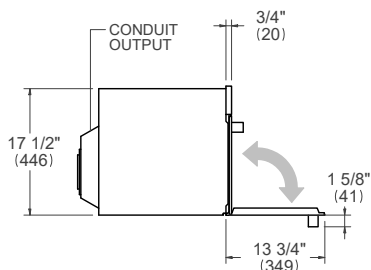
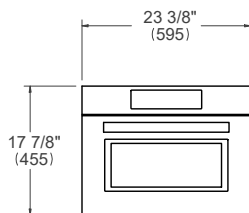


PRODUCT DIMENSIONS

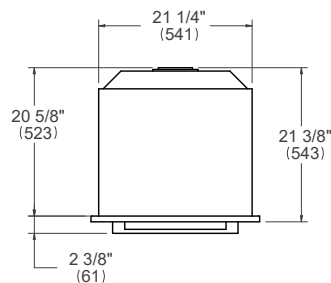
SIDE VIEW



FRONT VIEW

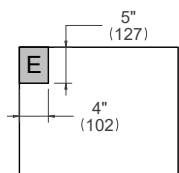


TOP VIEW



ELECTRICAL CONNECTION

FRONT VIEW



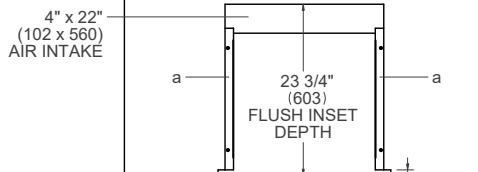
For single ovens installed into a wall cabinet, the electrical junction box may be located above, below to the left or right of the unit within reach of the power cord. Placement within the opening may require additional cabinet depth.

INSTALLATION REQUIREMENTS

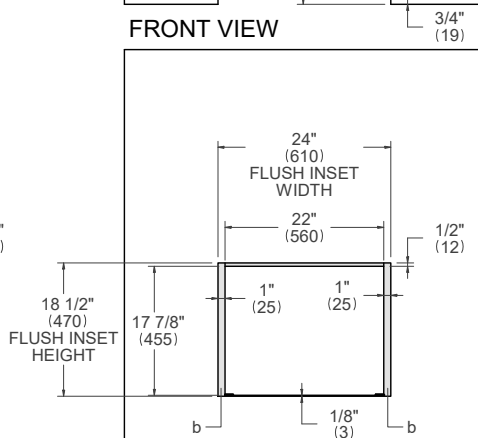
Minimum suggested load on cabinet base board is 110 lb (50 kg)

CUTOUT DIMENSIONS

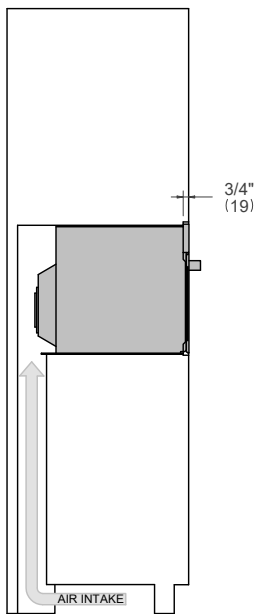
TOP VIEW



FRONT VIEW



SIDE VIEW



AIR INTAKE
4" x 15"
(102 x 380)

AIR INTAKE
4" x 15"
(102 x 380)

- (a) Spacers – Included with appliance
- (b) Visible Area – Match finish to outside cabinet panels