

**BERTAZZONI**  
PRODUCT GUIDE  
FEBRUARY 2017



DISTINCTIVE  
APPLIANCES INC.  
INSPIRING LIFESTYLES  
FOR OVER 35 YEARS



## INDEX

FREESTANDING	Heritage	Gas Ranges	3
	Master	Gas Ranges	4
	Master	Dual Fuel Ranges	5
	Master	Induction Ranges	6
	Professional	Induction Ranges	7
	Professional	Gas Ranges	8-9
	Professional	Dual Fuel Ranges	10
BUILT-IN	Professional	Electric Single Ovens	11
	Professional	Electric Double Ovens & Warming Drawer	12
	Professional	Specialty Ovens & Microwaves	13
	Professional	Gas Rangetops	14
	Professional	Gas, Electric & Segmented Cooktops	15-16-17
	Professional	Electric & Induction Cooktops	18
	Master	Electric Single & Double Ovens	19
	Master	Specialty Ovens & Warming Drawer	20
	Master	Gas Cooktops	21
REFRIGERATION	Pro/Mas/Her	French-door Refrigerator & Accessories	22
CLEAN UP	Pro/Mas/Her	Built-in Dishwasher & Accessories	23
VENTILATION	Professional	Undermount & Insert Hoods	24-25
	Professional	Wallmount Hoods & OTR	26
	Pro/Her	Visor Hoods & Wallmount Hoods with Canopies	27
ACCESSORIES		Duct Covers, Extensions, Recirculation Kits, Air Bracket	28
		Baffle & Mesh Filters	29
		Backsplashes	30
		Trims, Toekick Panels	31
		Simmer/Wok/Griddle Plates, Telescopic Shelves, Trays	32
		Ventilation Accessories Guide Matrix	34

## TWO YEAR LIMITED WARRANTY

Bertazzoni SpA will repair or replace any component part which fails or proves defective due to materials and/or workmanship within 2 years from the date of installation and under conditions of normal residential use. Repair or replacement will be free of charge, including labor at standard rates and shipping expenses. Repair service must be performed by a Bertazzoni Authorized Service Center during normal working hours. Cosmetic damages must be reported no later than 30 days after installation. This warranty does not cover the use of the product in any commercial application.



# PRODUCT GUIDE

## FEBRUARY 2017



### HERITAGE Series

#### FREESTANDING

#### MODEL

#### FINISH



#### 48" NATURAL GAS RANGE - 6 BURNERS + GRIDDLE

HER486GGASNE01		NERO / Matt Black
HER486GGASCR01		CREMA / Cream
HER486GGASVI		VINO / Burgundy

- 6 brass burners 750-18,000 BTUs / 1100W stainless steel griddle with drip tray
- Main gas convection oven (3.6 cu.ft) and gas infrared broiler + auxiliary standard gas oven (2.2 cu.ft)
- Functions (main oven): traditional bake, gas convection, broil, defrost/dehydrate, sabbath mode
- Included oven equipment: 2 telescopic glide shelf, 1 baking tray, 2 heavy gauge wire shelves, 1 grill trivet for tray
- Wok ring, simmer plate, propane conversion kit and 4" backguard are included (optional flat island trim available)
- Bottom flap storage compartment
- Thermocouple technology (gas shut-off safety)
- Full-width triple glass and soft-motion oven door hinges
- Voltage: 120 V, 60Hz / Power rating: 10 A - 1200 W
- Dimensions: (W) 47-7/8" (D) 25-3/16" (H) 35-1/2" > 37-1/4" (height adjustable stainless steel legs)



#### 36" NATURAL GAS RANGE - 6 BURNERS

HER366GASNE01		NERO / Matt Black
HER366GASCR01		CREMA / Cream
HER366GASVI01		VINO / Burgundy

- 6 brass burners 750-18,000 BTUs
- Gas convection oven (4.4 cu.ft) and gas infrared broiler
- Functions: traditional bake, gas convection, broil, defrost/dehydrate, sabbath mode
- Included oven equipment: 1 telescopic glide shelf, 1 baking tray, 2 heavy gauge wire shelves, 1 grill trivet for tray
- Wok ring, simmer plate, propane conversion kit and 4" backguard are included (optional flat island trim available)
- Bottom flap storage compartment
- Thermocouple technology (gas shut-off safety)
- Full-width triple glass and soft-motion oven door hinges
- Voltage: 120 V, 60Hz / Power rating: 1.5 A - 150 W
- Dimensions: (W) 35-7/8" (D) 25-3/16" (H) 35-1/2" > 37-1/4" (height adjustable stainless steel legs)



# PRODUCT GUIDE

## FEBRUARY 2017



### MASTER Series

#### FREESTANDING

#### MODEL FINISH



#### 48" GAS RANGE - 6 BRASS BURNERS AND GRIDDLE

MAS486GGASXT01	<input type="checkbox"/>	Stainless	Natural gas
MAS486GGASXTLP01	<input type="checkbox"/>	Stainless	Propane



#### 36" GAS RANGE - 5 BURNERS

MAS365GASXT01	<input type="checkbox"/>	Stainless	Natural gas
MAS365GASXTLP01	<input type="checkbox"/>	Stainless	Propane
MAS365GASXE01	<input type="checkbox"/>	Stainless	Natural gas
MAS365GASXELP01	<input type="checkbox"/>	Stainless	Propane



#### 30" GAS RANGE - 4 BURNERS

MAS304GASXT01	<input type="checkbox"/>	Stainless	Natural gas
MAS304GASXTLP	<input type="checkbox"/>	Stainless	Propane
MAS304GASXE01	<input type="checkbox"/>	Stainless	Natural gas
MAS304GASXELP01	<input type="checkbox"/>	Stainless	Propane



#### 24" GAS RANGE

MAS244GASXE01	<input type="checkbox"/>	Stainless	Natural gas
MAS244GASXELP01	<input type="checkbox"/>	Stainless	Propane

#### ALL MODELS

- XT models functions: traditional bake, gas convection, broil, convection broil, defrost/ dehydrate, sabbath mode
- XE models functions: traditional bake, gas convection, broil, defrost/ dehydrate, sabbath mode
- Included oven equipment: 1 telescopic glide shelf (2 for 48"), 1 baking tray, 2 heavy gauge wire shelves, 1 grill trivet for tray
- Wok ring, simmer plate, propane conversion kit and 4" backguard are included (optional flat island trim available)
- Thermocouple technology (gas shut-off safety)
- Bottom flap storage compartment (XT models only)
- Thermometer gage (XT models only)
- Quadruple glass oven door (XT models) - Full-width triple glass (XE models)
- Soft-motion oven door hinges
- Voltage: 120 V, 60Hz / Power rating: 1.5 A - 150 W (48" model: 10 A - 1200 W)

#### 48" WIDE MODEL

- 6 brass burners 750-18,000 BTUs / 1100W stainless steel griddle with drip tray
- Main gas convection oven (3.6 cu.ft) and gas infrared broiler + auxiliary standard gas oven (2.2 cu.ft)
- Dimensions: (W) 48-7/8" (D) 25-3/16" (H) 35-1/2" > 37-1/4" (height adjustable stainless steel legs)

#### 36" WIDE MODEL

- 5 brass burners 750-18,000 BTUs (aluminum burners for XE models)
- Gas convection oven (4.4 cu.ft) and gas infrared broiler
- Dimensions: (W) 35-7/8" (D) 25-3/16" (H) 35-1/2" > 37-1/4" (height adjustable stainless steel legs)

#### 30" WIDE MODEL

- 4 brass burners 750-18,000 BTUs (aluminum burners for XE models)
- Gas convection oven (3.6 cu.ft) and gas infrared broiler
- Dimensions: (W) 29-13/16" (D) 25-3/16" (H) 35-1/2" > 37-1/4" (height adjustable stainless steel legs)

#### 24" WIDE MODEL

- 4 aluminum burners 750-18,000 BTUs
- Gas convection oven (2.4 cu.ft) and gas infrared broiler
- Dimensions: (W) 23-13/16" (D) 25-3/16" (H) 35-1/2" > 37-1/4" (height adjustable stainless steel legs)

**WHEN ORDERING,  
YOU MUST SPECIFY  
BETWEEN NATURAL GAS  
OR PROPANE (LP)**



# PRODUCT GUIDE

## FEBRUARY 2017



### MASTER Series

#### FREESTANDING

#### MODEL FINISH



#### 48" DUAL FUEL RANGE - 6 BRASS BURNERS AND GRIDDLE

MAS486GDFSXT	<input type="checkbox"/>	Stainless	Dual Fuel
--------------	--------------------------	-----------	-----------



#### 36" DUAL FUEL RANGE - 5 BURNERS

MAS365DFSXT	<input type="checkbox"/>	Stainless	Dual Fuel
MAS365DFMXE	<input type="checkbox"/>	Stainless	Dual Fuel



#### 30" DUAL FUEL RANGE - 4 BURNERS

MAS304DFSXT	<input type="checkbox"/>	Stainless	Dual Fuel
MAS304DFMXE	<input type="checkbox"/>	Stainless	Dual Fuel

#### ALL MODELS

- XT models functions: convection, bake, convection bake, broil, convection broil, turbo convection, defrost/ dehydrate, proofing, warming, self clean
- XE models functions: bake, traditional bake, upper bake, broil, large broil, convection broil, convection, defrost/ dehydrate
- Included oven equipment: 1 telescopic glide shelf, 1 baking tray, 2 heavy gauge wire shelves, 1 grill trivet for tray
- Wok ring, simmer plate, propane conversion kit and 4" backguard are included (optional flat island trim available)
- Thermocouple technology (gas shut-off safety)
- Quadruple glass oven door (XT models) - Full-width triple glass (XE models)

#### 48" WIDE MODEL

- 6 brass burners 750-18,000 BTUs / 1100W stainless steel griddle with drip tray
- Main electric self-clean convection oven (3.4 cu.ft) and electric grill + auxiliary electric oven (1.7 cu.ft)
- Voltage: 120/208 V - 120/240 V, 60Hz
- Power rating: 32 A - 6700 W, 37 A - 8500 W
- Dimensions: (W) 48-7/8" (D) 25-3/16" (H) 35-1/2" > 37-1/4" (height adjustable stainless steel legs)

#### 36" WIDE MODEL

- 5 brass burners 750-18,000 BTUs (aluminum burners for XE models)
- XT models: electric self-clean convection oven (4.0 cu.ft) and electric grill
- XE models: electric convection oven (4.4 cu.ft) and electric grill
- Voltage: 120/208 V - 120/240 V, 60Hz /
- Power rating: (XT) 24.3 A - 5000 W, 27.8 A - 8000 W / (XE) 12 A - 2400 W, 13.5 A - 3100 W
- Dimensions: (W) 35-7/8" (D) 25-3/16" (H) 35-1/2" > 37-1/4" (height adjustable stainless steel legs)

#### 30" WIDE MODEL

- 4 brass burners 750-18,000 BTUs (aluminum burners for XE models)
- XT models: electric self-clean convection oven (3.4 cu.ft) and electric grill
- XE models: electric convection oven (3.6 cu.ft) and electric grill
- Voltage: 120/208 V - 120/240 V, 60Hz
- Power rating: (XT) 21 A - 4400 W, 24 A - 5000 W / (XE) 12 A - 2400 W, 13.5 A - 3100 W
- Dimensions: (W) 29-13/16" (D) 25-3/16" (H) 35-1/2" > 37-1/4" (height adjustable stainless steel legs)



# PRODUCT GUIDE

## FEBRUARY 2017



### MASTER Series

**FREESTANDING**

**MODEL**

**FINISH**



#### 30" INDUCTION RANGE - 4 BURNERS

MAS304INSXT	<input type="checkbox"/>	Stainless
MAS304INMXE	<input type="checkbox"/>	Stainless

#### XT MODEL

- 4 induction zones : 1 x 5" - 2 x 7" - 1 x 8" (Between 1400W to 2300W / Booster from 2200W to 3700W)
- Electric convection self-clean oven (3.4 cu.ft) and electric broiler
- Functions : convection, bake, convection bake, turbo convection, convection broil, defrost/dehydrate, proofing, warming, broil, self clean
- Included oven equipment: 1 telescopic glide shelf, 1 baking tray, 2 heavy gauge wire shelves, 1 grill trivet for tray
- 4" backguard included (optional flat island trim available)
- Residual heat indicator
- Quadruple glass and soft motion oven door
- Soft-motion oven door hinges
- Voltage: 120/208 V - 120/240 V, 60Hz / Power rating: 53 A - 11800 W, 56 A - 12900 W
- Dimensions: W 29-13/16" / H 35-1/2" > 37-1/4" / D 25-3/16" (height adjustable stainless steel wrapped legs)

#### XE MODEL

- 4 induction zones : 1 x 5" - 2 x 7" - 1 x 8" (Between 1400W to 2300W / Booster from 2200W to 3700W)
- Electric convection oven (3.6 cu.ft) and electric broiler
- Functions: bake, traditional bake, upper bake, broil, large broil, convection broil, convection, defrost/dehydrate
- Included oven equipment: 1 telescopic glide shelf, 1 baking tray, 2 heavy gauge wire shelves, 1 grill trivet for tray
- 4" backguard included (optional flat island trim available)
- Residual heat indicator
- Full-width triple glass oven door
- Soft-motion oven door hinges
- Voltage: 120/208 V - 120/240 V, 60Hz / Power rating: 44 A - 9800 W, 45.5 A - 10500 W
- Dimensions: W 29-13/16" / H 35-1/2" > 37-1/4" / D 25-3/16" (height adjustable stainless steel legs)



# PRODUCT GUIDE

## FEBRUARY 2017



### PROFESSIONAL Series

#### FREESTANDING

#### MODEL

#### FINISH

#### 30" INDUCTION RANGE - 4 BURNERS

PRO304INSX		Stainless
PRO304INSAR		ARANCIO / Orange
PRO304INSBI		BIANCO / Pure White
PRO304INSGI		GIALLO / Yellow
PRO304INSRO		ROSSO / Red
PRO304INSVI		VINO / Burgundy
PRO304INSNE		NERO / Black
PRO304INMXE		Stainless



#### X MODELS (colored finish models included)

- 4 induction zones : 1 x 5" - 2 x 7" - 1 x 8" (Between 1400W to 2300W / Booster from 2200W to 3700W)
- Electric convection self-clean oven (3.4 cu.ft) and electric broiler
- Functions : convection, bake, convection bake, turbo convection, convection broil, defrost/dehydrate, proofing, warming, broil, self clean
- Included oven equipment: 1 telescopic glide shelf, 1 baking tray, 2 heavy gauge wire shelves, 1 grill trivet for tray
- 4" backguard included (optional flat island trim available)
- Residual heat indicator
- Quadruple glass and soft motion oven door
- Soft-motion oven door hinges
- Voltage: 120/208 V - 120/240 V, 60Hz / Power rating: 53 A - 11800 W, 56 A - 12900 W
- Dimensions: W 29-13/16" / H 35-1/2" > 37-1/4" / D 25-3/16" (height adjustable stainless steel wrapped legs)

#### XE MODELS

- 4 induction zones : 1 x 5" - 2 x 7" - 1 x 8" (Between 1400W to 2300W / Booster from 2200W to 3700W)
- Electric convection oven (3.6 cu.ft) and electric broiler
- Functions: bake, traditional bake, upper bake, broil, large broil, convection broil, convection, defrost/dehydrate
- Included oven equipment: 1 telescopic glide shelf, 1 baking tray, 2 heavy gauge wire shelves, 1 grill trivet for tray
- 4" backguard included (optional flat island trim available)
- Residual heat indicator
- Full-width triple glass oven door
- Soft-motion oven door hinges
- Voltage: 120/208 V - 120/240 V, 60Hz / Power rating: 44 A - 9800 W, 45.5 A - 10500 W
- Dimensions: W 29-13/16" / H 35-1/2" > 37-1/4" / D 25-3/16" (height adjustable stainless steel legs)



# PRODUCT GUIDE FEBRUARY 2017



## PROFESSIONAL Series

### FREESTANDING

### MODEL FINISH



#### 48" GAS RANGE - 6 BRASS BURNERS + GRIDDLE

PRO486GGASX01	<input type="checkbox"/>	Stainless Steel (Natural)
PRO486GGASXLP01	<input type="checkbox"/>	Stainless Steel (Propane)
PRO486GGASAR01	<input type="checkbox"/>	ARANCIO / Orange
PRO486GGASBI01	<input type="checkbox"/>	BIANCO / Pure White
PRO486GGASGI	<input type="checkbox"/>	GIALLO / Yellow
PRO486GGASRO01	<input type="checkbox"/>	ROSSO / Red
PRO486GGASVI	<input type="checkbox"/>	VINO / Burgundy
PRO486GGASNE01	<input type="checkbox"/>	NERO / Black

- 6 brass burners 750-18,000 BTUs / 1100W stainless steel griddle with drip tray
- Main gas convection oven (3.6 cu.ft) and gas infrared broiler + auxiliary standard gas oven (2.2 cu.ft)
- Functions (main oven): traditional bake, gas convection, broil, defrost/dehydrate, sabbath mode
- Included oven equipment: 2 telescopic glide shelf, 1 baking tray, 2 heavy gauge wire shelves, 1 grill trivet for tray
- Wok ring, simmer plate, propane conversion kit and 4" backguard are included (optional flat island trim available)
- Bottom flap storage compartment
- Thermocouple technology (gas shut-off safety)
- Full-width triple glass and soft-motion oven door hinges
- Voltage: 120 V, 60Hz / Power rating: 10 A - 1200 W
- Dimensions: (W) 47-7/8" (D) 25-3/16" (H) 35-1/2" > 37-1/4" (height adjustable stainless steel legs)

**WHEN ORDERING,  
YOU MUST SPECIFY  
BETWEEN NATURAL GAS  
OR PROPANE (LP)**

#### 36" GAS RANGE - 6 BRASS BURNERS

PRO366GASX01	<input type="checkbox"/>	Stainless Steel (Natural)
PRO366GASXLP01	<input type="checkbox"/>	Stainless Steel (Propane)
PRO366GASAR01	<input type="checkbox"/>	ARANCIO / Orange
PRO366GASBI	<input type="checkbox"/>	BIANCO / Pure White
PRO366GASGI01	<input type="checkbox"/>	GIALLO / Yellow
PRO366GASRO01	<input type="checkbox"/>	ROSSO / Red
PRO366GASVI01	<input type="checkbox"/>	VINO / Burgundy
PRO366GASNE01	<input type="checkbox"/>	NERO / Black

- 6 brass burners 750-18,000 BTUs
- Gas convection oven (4.4 cu.ft) and gas infrared broiler
- Functions: traditional bake, gas convection, broil, defrost/dehydrate, sabbath mode
- Included oven equipment: 1 telescopic glide shelf, 1 baking tray, 2 heavy gauge wire shelves, 1 grill trivet for tray
- Wok ring, simmer plate, propane conversion kit and 4" backguard are included (optional flat island trim available)
- Bottom flap storage compartment
- Thermocouple technology (gas shut-off safety)
- Full-width triple glass and soft-motion oven door hinges
- Voltage: 120 V, 60Hz / Power rating: 1.5 A - 150 W
- Dimensions: (W) 35-7/8" (D) 25-3/16" (H) 35-1/2" > 37-1/4" (height adjustable stainless steel legs)







# PRODUCT GUIDE

## FEBRUARY 2017



### PROFESSIONAL Series

#### FREESTANDING

#### MODEL FINISH



#### 36" GAS RANGE - 5 BRASS BURNERS

PRO365GASXFR01	<input type="checkbox"/>	Stainless Steel (Natural)
PRO365GASXLPFR01	<input type="checkbox"/>	Stainless Steel (Propane)

#### 36" GAS RANGE - 5 ALUMINUM BURNERS\*

PRO365GASXVFR	<input type="checkbox"/>	Stainless Steel (Natural)
PRO365GASXVFRLP	<input type="checkbox"/>	Stainless Steel (Propane)



#### 30" GAS RANGE - 4 BRASS BURNERS

PRO304GASXFR01	<input type="checkbox"/>	Stainless Steel (Natural)
PRO304GASXLPFR01	<input type="checkbox"/>	Stainless Steel (Propane)
PRO304GASARFR01	<input checked="" type="checkbox"/>	ARANCIO / Orange
PRO304GASBI01	<input type="checkbox"/>	BIANCO / Pure White
PRO304GASGI01	<input type="checkbox"/>	GIALLO / Yellow
PRO304GASRO01	<input type="checkbox"/>	ROSSO / Red
PRO304GASVI01	<input type="checkbox"/>	VINO / Burgundy
PRO304GASNE01	<input type="checkbox"/>	NERO / Black

**WHEN ORDERING,  
YOU MUST SPECIFY  
BETWEEN NATURAL GAS  
OR PROPANE (LP)**

#### 30" GAS RANGE - 4 ALUMINUM BURNERS\*

PRO304GASXVFR	<input type="checkbox"/>	Stainless Steel (Natural)
PRO304GASXVFRLP	<input type="checkbox"/>	Stainless Steel (Propane)



#### 24" GAS RANGE - 2 ALUMINUM BURNERS\*

PRO244GASXFR01	<input type="checkbox"/>	Stainless (Natural)
PRO244GASXLPFR01	<input type="checkbox"/>	Stainless (Propane)

#### ALL MODELS WITH BRASS BURNERS

- Functions: traditional bake, gas convection, broil, defrost/dehydrate, sabbath mode
- Included oven equipment: 1 telescopic glide shelf, 1 baking tray, 2 heavy gauge wire shelves, 1 grill trivet for tray
- Wok ring, simmer plate, propane conversion kit and 4" backguard are included (optional flat island trim available)
- Thermocouple technology (gas shut-off safety)
- Bottom flip storage compartment
- Full-width triple glass oven door
- Voltage: 120 V, 60Hz / Power rating: 1.5 A - 150 W

#### \*ALL MODELS WITH ALUMINUM BURNERS

- 1 telescopic glide shelf - NOT INCLUDED
- Bottom flip storage compartment NOT AVAILABLE

#### 36" WIDE MODEL

- 5 brass burners 750-18,000 BTUs
- Gas convection oven (4.4 cu.ft) and gas infrared broiler
- Bottom flap storage compartment
- Dimensions: (W) 35-7/8" (D) 25-3/16" (H) 35-1/2" > 37-1/4" (height adjustable legs)

#### 30" WIDE MODEL

- 4 brass burners 750-18,000 BTUs
- Gas convection oven (3.6 cu.ft) and gas infrared broiler
- Bottom flap storage compartment
- Dimensions: (W) 29-13/16" (D) 25-3/16" (H) 35-1/2" > 37-1/4" (height adjustable legs)

#### 24" WIDE MODEL

- 4 aluminum burners 750-18,000 BTUs
- Gas convection oven (2.4 cu.ft) and gas infrared broiler
- Dimensions: (W) 23-13/16" (D) 25-3/16" (H) 35-1/2" > 37-1/4" (height adjustable legs)



# PRODUCT GUIDE

## FEBRUARY 2017



### PROFESSIONAL Series

#### FREESTANDING

#### MODEL FINISH



#### 48" DUAL FUEL RANGE - 6 BRASS BURNERS + GRIDDLE

PRO486GDFSX		Stainless Steel
PRO486GDFSAR		ARANCIO / Orange
PRO486GDFSBI		BIANCO / Pure White
PRO486GDFSGI		GIALLO / Yellow
PRO486GDFSRO		ROSSO / Red
PRO486GDFSVI		VINO / Burgundy
PRO486GDFSNE		NERO / Black



#### 36" DUAL FUEL RANGE - 6 BRASS BURNERS

PRO366DFSX		Stainless Steel
PRO366DFSAR		ARANCIO / Orange
PRO366DFSBI		BIANCO / Pure White
PRO366DFSGI		GIALLO / Yellow
PRO366DFSRO		ROSSO / Red
PRO366DFSVI		VINO / Burgundy
PRO366DFSNE		NERO / Black



#### 30" DUAL FUEL RANGE - 4 BRASS BURNERS

PRO304DFSX		Stainless Steel
PRO304DFSAR		ARANCIO / Orange
PRO304DFSBI		BIANCO / Pure White
PRO304DFSGI		GIALLO / Yellow
PRO304DFSRO		ROSSO / Red
PRO304DFSVI		VINO / Burgundy
PRO304DFSNE		NERO / Black

#### ALL MODELS

- Functions: convection, bake, convection bake, turbo convection, convection broil, defrost/ dehydrate, proofing, warming, broil, self clean
- Included oven equipment: 1 telescopic glide shelf, 1 baking tray, 2 heavy gauge wire shelves, 1 grill trivet for tray
- Wok ring, simmer plate, propane conversion kit and 4" backguard are included (optional flat island trim available)
- Thermocouple technology (gas shut-off safety)
- Bottom flip storage compartment + Quadruple glass door oven

#### 48" WIDE MODEL

- 6 brass burners 750-18,000 BTUs / 1100W stainless steel griddle with drip tray
- Main electric self-clean convection oven (3.4 cu.ft) and electric grill + auxiliary electric oven (1.7 cu.ft)
- Auxiliary oven functions: upper bake, traditional bake, bake, broil
- Voltage: 120/208 V - 120/240 V, 60Hz / Power rating: 32 A - 6700 W, 37 A - 8500 W
- Dimensions: (W) 47-7/8" (D) 25-3/16" (H) 35-1/2" > 37-1/4" (height adjustable stainless steel wrapped legs)

#### 36" WIDE MODEL

- 6 brass burners 750-18,000 BTUs
- Electric convection oven (4.0 cu.ft) and electric grill
- Voltage: 120/208 V - 120/240 V, 60Hz / Power rating: 24.3 A - 5000 W, 27.8 A - 8000 W
- Dimensions: (W) 35-7/8" (D) 25-3/16" (H) 35-1/2" > 37-1/4" (height adjustable stainless steel wrapped legs)

#### 30" WIDE MODEL

- 4 brass burners 750-18,000 BTUs
- Electric convection oven (3.4 cu.ft) and electric grill
- Voltage: 120/208 V - 120/240 V, 60Hz / Power rating: 21 A - 4400 W, 24 A - 5000 W
- Dimensions: (W) 29-13/16" (D) 25-3/16" (H) 35-1/2" > 37-1/4" (height adjustable stainless steel wrapped legs)



**PRODUCT GUIDE**  
**FEBRUARY 2017**



**PROFESSIONAL Series**

**BUILT-IN**

**MODEL**

**FINISH**

**COOKING MODES:** 1 CONVECTION 2 BROILER 3 CONVECTION BROILER 4 CONVECTION BAKE 5 BAKE 6 TURBO 7 DEHYDRATION/DEFROSTING 8 PROOFING 9 SABBATH MODE/WARMING (ONLY ON XT MODEL) 10 PYROLYTIC 11 AUTO COOKING MODE (ONLY ON XT MODEL)

**30" ELECTRIC SINGLE CONVECTION OVEN - TOP VERSION**



PROFS30XT	<input type="checkbox"/>	Stainless
<ul style="list-style-type: none"> <li>- LCD touch control interface + knobs</li> <li>- Flush front design</li> <li>- Dual diagonal convection system</li> <li>- Net usable volume: 4.1 cu.ft</li> <li>- 4 heating elements: 3400W+2100W+2x1650W</li> <li>- Pyrolytic self cleaning cycle</li> <li>- 10 cooking modes + Assistant automated cooking</li> <li>- 33 preset cooking sequences with Assistant</li> </ul>		<ul style="list-style-type: none"> <li>- Dimensions: W 29-3/4" / D min. 21-5/8" max. 22-5/8" / H 28-11/16"</li> <li>- Full extension telescopic slide out rack</li> <li>- Meat probe</li> <li>- Soft motion door with quadruple glass</li> <li>- 7 shelf positions with 2 wire shelves</li> <li>- 1 baking tray included</li> <li>- Suitable for undercounter installation</li> </ul>

**30" ELECTRIC SINGLE CONVECTION OVEN - VALUE VERSION**



PROFS30XV	<input type="checkbox"/>	Stainless
<ul style="list-style-type: none"> <li>- LED touch control interface + knobs</li> <li>- Flush front design</li> <li>- Dual diagonal convection system</li> <li>- Net usable volume: 4.1 cu.ft</li> <li>- 4 heating elements: 3400W+2100W+2x1650W</li> <li>- Pyrolytic self cleaning cycle</li> </ul>		<ul style="list-style-type: none"> <li>- 9 cooking modes</li> <li>- Dimensions: W 29-3/4" / D min. 21-5/8" max. 22-5/8" / H 28-11/16"</li> <li>- Soft motion door with quadruple glass</li> <li>- 7 shelf positions with 2 wire shelves</li> <li>- 1 baking tray included</li> <li>- Suitable for undercounter installation</li> </ul>

**24" SINGLE CONVECTION OVEN**



PROFS24XV	<input type="checkbox"/>	Stainless
<ul style="list-style-type: none"> <li>- Capacity 2.3 cu.ft</li> <li>- 6 cooking functions</li> <li>- 2 wire shelves, 1 baking tray, 5 shelf positions</li> <li>- Metal finish knobs with LED display interface</li> </ul>		<ul style="list-style-type: none"> <li>- Triple glass inner oven door</li> <li>- Dimensions: W 23 3/8" / D 21 13/16" / H 23 3/8"</li> <li>- Installs flush with cabinet doors</li> </ul>

**NEW**



# PRODUCT GUIDE

## FEBRUARY 2017



### PROFESSIONAL Series

**BUILT-IN**

**MODEL**

**FINISH**

**COOKING MODES:** 1 CONVECTION 2 BROILER 3 CONVECTION BROILER 4 CONVECTION BAKE 5 BAKE 6 TURBO 7 DEHYDRATION/DEFROSTING  
8 PROOFING 9 SABBATH MODE/WARMING (ONLY ON XT MODEL) 10 PYROLYTIC 11 AUTO COOKING MODE (ONLY ON XT MODEL)



#### 30" ELECTRIC DOUBLE CONVECTION OVEN - TOP VERSION

PROFD30XT



Stainless

- LCD touch control interface + knobs
- Flush front design
- Dual diagonal convection system
- Net usable volume: 4.1 cu.ft each cavity
- 4 heating elements: 3400W+2100W+2x1650W
- Pyrolytic self cleaning cycle
- 33 preset cooking sequences with Assistant
- 10 cooking modes + Assistant automated cooking
- Dimensions: W 29-3/4" / D min. 22-1/16" max. 23-1/16" / H 53-1/4"
- Full extension telescopic slide out rack in both cavities
- Meat probe
- Soft motion door with quadruple glass
- 7 shelf positions with 2 wire shelves
- 2 baking trays included
- Fully featured cooking mode lower oven



#### 30" ELECTRIC DOUBLE CONVECTION OVEN - VALUE VERSION

PROFD30XV



Stainless

- LED touch control interface + knobs
- Flush front design
- Dual diagonal convection system
- Net usable volume: 4.1 cu.ft each cavity
- 4 heating elements: 3400W+2100W+2x1650W
- Pyrolytic self cleaning cycle
- Dimensions: W 29-3/4" / D min. 22-1/16" max. 23-1/16" / H 53-1/4"
- 9 cooking modes
- Soft motion door with quadruple glass
- 7 shelf positions with 2 wire shelves
- 2 baking trays included
- Fully featured cooking mode lower oven



#### 30" CONVECTION WARMING DRAWER

PROWD30X



Stainless

- Capacity 1.5 cu.ft
- Flush front design
- Ceramic-finished drawer
- Soft closing operation
- Lateral convection & thermostat light
- Power rating 400W
- Max. Temperature 185° F
- Dimensions: W 29-7/8" / D 21-1/4" / H 10-3/64"



# PRODUCT GUIDE

## FEBRUARY 2017



### PROFESSIONAL Series

#### BUILT-IN

#### MODEL FINISH

#### 30" ELECTRIC CONVECTION SPEED OVEN



PROSO30X  Stainless

- Combination of electric convection + grill with microwave (6 fonctions)
- Touch LED display + knobs
- Flush front design
- Oven volume: 1.34 cu.ft
- 5 preset auto cooking modes
- Dimensions: W 29-3/4" / D 21-17/64" / H 18-5/8"
- Cooling fan
- 1 glass turntable tray
- 2 shelf positions
- Suitable for under-counter installation

#### 30" ELECTRIC CONVECTION STEAM OVEN



PROCS30X  Stainless

- Combination of electric convection + grill with steam (6 fonctions)
- Touch LED display + knobs
- Flush front design
- Oven volume: 1.10 cu.ft
- Dimensions: W 29-3/4" / D 21-17/64" / H 18-5/8"
- 1 stainless tray (40mm) and 1 perforated stainless tray (20mm)
- 2 shelf positions
- Suitable for under-counter installation

#### 24" ELECTRIC SPEED OVEN (COMBI MICROWAVE) WITH OPTIONAL TRIM KIT



SO24PROX  Stainless  
TR30PROSO\* (trim kit)  Stainless



- Combination of electric convection + grill with microwave (6 fonctions)
- LCD touch control glass interface
- Flush front design
- 5 power levels (200 W to 1000 W)
- 13 preset cooking modes
- European convection ring heating element
- 1.35 cu.ft stainless cavity
- Broiler: 1500W electric grill
- New Professional Series handle and stainless front
- Cooling fan
- Glass turntable
- W 23-7/16" / D min. 17-3/4 max. 20-7/16" / H 17-15/16"
- Side Panel (2): W 2-31/32" / H 17-29/32

\*SIDE TRIM PANELS AVAILABLE AS OPTIONAL ACCESSORY IN CASE OF A 30" WIDTH INSTALLATION.

#### 30" BUILT-IN MICROWAVE OVEN WITH FRAME



MO30STANE  Black  
FR30PROX-WMC\* (frame)  Stainless with metal conduit

- Capacity 2 cu.ft
- 10 power levels / Power 1100 watts
- Turntable diameter 16"
- White cavity finishing
- Sensor heat, defrost, cook function, timer
- Preset cooking modes
- Dimensions: W 24" / D 21-3/4" / H 12-1/2"
- Frame dimensions: W 29-7/8" / D 1" / H 18-1/4"

\*FRAME REQUIRED BUT SOLD SEPARATELY.

#### 30" VENTILATION MICROWAVE OVEN - OVER THE RANGE



KOTR30X  Stainless + Black

- Controls include pre-set functions, cooking timer and sensor controls for reheating and defrosting.
- Oven volume: 1.6 cu.ft
- 10 Power levels
- 300 CFM internal blower
- Power: 1000W
- Dimensions: W 29 13/16" / D 14 7/8" / H 16 1/8"

**NEW**



**PRODUCT GUIDE**  
**FEBRUARY 2017**



**PROFESSIONAL Series**

**BUILT-IN**

**MODEL FINISH**



**48" RANGETOP / 6 BURNERS + GRIDDLE**

CB486G00X	<input type="checkbox"/>	Stainless
<ul style="list-style-type: none"> <li>- 6 brass burners 750-18,000 BTUs</li> <li>- Electric griddle: 1100 Watts</li> <li>- Cast iron professional grade grates</li> <li>- Propane conversion kit included</li> </ul>		
<ul style="list-style-type: none"> <li>- Thermocouple gas shut-off safety</li> <li>- Metal knobs</li> <li>- Wok ring, simmer plate and 3/4" backguard included</li> <li>- Dimensions: W 47-13/16" / H 7-5/16" (with grates) / D 25-3/16"</li> </ul>		



**36" RANGETOP / 6 BURNERS**

CB36600X	<input type="checkbox"/>	Stainless
<ul style="list-style-type: none"> <li>- 6 brass burners 750-18,000 BTUs</li> <li>- Cast iron professional grade grates</li> <li>- Propane conversion kit included</li> <li>- Thermocouple gas shut-off safety</li> </ul>		
<ul style="list-style-type: none"> <li>- Metal knobs</li> <li>- Wok ring, simmer plate and 3/4" backguard included</li> <li>- Dimensions: W 35-13/16" / H 7-5/16" (with grates) / D 25-3/16"</li> </ul>		



**36" RANGETOP / 5 BURNERS**

CB36500X	<input type="checkbox"/>	Stainless
<ul style="list-style-type: none"> <li>- 5 brass burners 750-18,000 BTUs</li> <li>- Cast iron professional grade grates</li> <li>- Propane conversion kit included</li> <li>- Thermocouple gas shut-off safety</li> </ul>		
<ul style="list-style-type: none"> <li>- Metal knobs</li> <li>- Wok ring, simmer plate and 3/4" backguard included</li> <li>- Dimensions: W 35-13/16" / H 6-1/2" / D 25-3/16"</li> </ul>		



# PRODUCT GUIDE

## FEBRUARY 2017



### PROFESSIONAL Series

#### BUILT-IN

#### MODEL FINISH

#### 36" GAS COOKTOP / 6 BURNERS - HIGH PROFILE



DB36600X	<input type="checkbox"/>	Stainless
<ul style="list-style-type: none"> <li>- 6 brass burners 750-18,000 BTUs</li> <li>- Cast iron professional grade grates</li> <li>- Thermocouple gas shut-off safety</li> <li>- Propane conversion kit included</li> </ul>		<ul style="list-style-type: none"> <li>- High profile main top</li> <li>- Metal knobs</li> <li>- Wok ring and simmer plate included</li> <li>- Dimensions: W 36-13/32" / H 1-3/8" + profile height / D 21-1/4"</li> </ul>

#### 36" GAS COOKTOP / 6 BURNERS



QB36600X	<input type="checkbox"/>	Stainless
<ul style="list-style-type: none"> <li>- 6 brass burners 750-18,000 BTUs</li> <li>- Cast iron professional grade grates</li> <li>- Thermocouple gas shut-off safety</li> <li>- Propane conversion kit included</li> </ul>		<ul style="list-style-type: none"> <li>- Low profile main top</li> <li>- Metal knobs</li> <li>- Wok ring and simmer plate included</li> <li>- Dimensions: W 36-13/16" / H 2-11/16" / D 21-1/4"</li> </ul>

#### 36" GAS COOKTOP / 5 BURNERS



QB36500X	<input type="checkbox"/>	Stainless
<ul style="list-style-type: none"> <li>- 5 brass burners 750-18,000 BTUs</li> <li>- Cast iron professional grade grates</li> <li>- Thermocouple gas shut-off safety</li> <li>- Propane conversion kit included</li> </ul>		<ul style="list-style-type: none"> <li>- Low profile main top</li> <li>- Metal knobs</li> <li>- Wok ring and simmer plate included</li> <li>- Dimensions: W 36-13/16" / H 2-11/16" / D 21-1/4"</li> </ul>

#### 36" GAS COOKTOP / 5 BURNERS



Q36500X	<input type="checkbox"/>	Stainless
<ul style="list-style-type: none"> <li>- 5 aluminium burners 750-18,000 BTUs</li> <li>- Cast iron professional grade grates</li> <li>- Thermocouple gas shut-off safety</li> <li>- Propane conversion kit included</li> </ul>		<ul style="list-style-type: none"> <li>- Low profile main top</li> <li>- Metal coated knobs</li> <li>- Wok ring and simmer plate included</li> <li>- Dimensions: W 36-13/16" / H 2-11/16" / D 21-1/4"</li> </ul>

#### 30" GAS COOKTOP / 4 BURNERS



QB30400X	<input type="checkbox"/>	Stainless
<ul style="list-style-type: none"> <li>- 4 brass burners 750-18,000 BTUs</li> <li>- Cast iron professional grade grates</li> <li>- Thermocouple gas shut-off safety</li> <li>- Propane conversion kit included</li> </ul>		<ul style="list-style-type: none"> <li>- Low profile main top</li> <li>- Metal knobs</li> <li>- Wok ring and simmer plate included</li> <li>- Dimensions: W 29-7/16" / H 2-5/8" / D 21-1/4"</li> </ul>

#### 30" GAS COOKTOP / 4 BURNERS



Q30400X	<input type="checkbox"/>	Stainless
<ul style="list-style-type: none"> <li>- 4 aluminium burners 750-18,000 BTUs</li> <li>- Cast iron professional grade grates</li> <li>- Thermocouple gas shut-off safety</li> <li>- Propane conversion kit included</li> </ul>		<ul style="list-style-type: none"> <li>- Low profile main top</li> <li>- Metal coated knobs</li> <li>- Wok ring and simmer plate included</li> <li>- Dimensions: W 29-7/16" / H 2-5/8" / D 21-1/4"</li> </ul>



# PRODUCT GUIDE FEBRUARY 2017



## PROFESSIONAL Series

**BUILT-IN**

**MODEL FINISH**

### 36" GAS COOKTOP - 5 BURNERS



V36500X  Stainless

- 5 aluminium burners 750-13,000 BTUs
- Cast iron grates
- Propane conversion kit included
- Dimensions: W 35-13/16" / H 1-1/2" / D 21-11/16"
- Thermocouple gas shut-off safety
- Easy to clean one-piece surface
- Metal coated knobs
- Slim depth installation compatible

### 24" GAS COOKTOP - 4 BURNERS



V24400X  Stainless

- 4 aluminium burners 750-13,000 BTUs
- Cast iron grates
- Propane conversion kit included
- Dimensions: W 23-1/4" / H 1-1/2" / D 19-5/8"
- Thermocouple gas shut-off safety
- Easy to clean one-piece surface
- Metal coated knobs
- Slim depth installation compatible

### 24" SEGMENTED COOKTOP - 3 BURNERS



PMB24300X  Stainless

- 3 brass burners > 750-18000 Btu (dual zone) + 6500 Btu + 3400 Btu
- Dimensions: W 23-3/16" / H 2-11/16" / D 20-15/32"
- Metal coated knobs
- Wok ring included
- Thermocouple gas shut-off safety

### 24" SEGMENTED COOKTOP - 4 BURNERS



PM24400X  Stainless

- 4 aluminium burners > 11000 Btu + 2 x 6500 Btu + 3400 Btu
- Dimensions: W 23-3/16" / H 2-11/16" / D 20-15/32"
- Metal coated knobs
- Thermocouple gas shut-off safety

### 36" SEGMENTED COOKTOP / 5 GAS BURNERS



PM36500X  Stainless

- 5 brass burners 750-18,000 BTUs
- Thermocouple gas shut-off safety
- Propane conversion kit included
- Metal knobs
- Cast iron grates
- Wok ring included
- Dimensions: W 35-1/32" / H 2-11/16" / D 20-15/32"





# PRODUCT GUIDE

## FEBRUARY 2017



### PROFESSIONAL Series

#### BUILT-IN

#### MODEL

#### FINISH

#### 36" SEGMENTED COOKTOP / 5 GAS BURNERS



PM365S0X



Stainless

- 5 brass burners 750-18,000 BTUs
- Thermocouple gas shut-off safety
- Propane conversion kit included
- Metal knobs

- Cast iron grates
- Wok ring included
- 110 Volts hook up
- Dimensions: W 35-1/32" / H 2-11/16" / D 20-15/32"

#### 36" SEGMENTED COOKTOP / 3 GAS BURNERS AND GRIDDLE



PM3630GX



Stainless

- 3 brass burners 750-18,000 BTUs
- Thermocouple gas shut-off safety
- Propane conversion kit included
- Metal knobs
- Cast iron grates

- Wok ring included
- Electric griddle: 800 Watts
- 110 Volts hook up
- Dimensions: W 35-1/32" / H 2-11/16" / D 20-15/32"

#### 36" SEGMENTED COOKTOP / 3 GAS BURNERS AND 2 INDUCTION ZONES



PM36310X



Stainless and ceramic glass

- 3 brass burners 750-18,000 BTUs
- Maximum induction power per zone: 1,800 watts
- Thermocouple gas shut-off safety
- Propane conversion kit included
- Metal knobs

- Electrical requirements: 120/208 V - 60 Hz - 13.50 A and 120/240 V - 60 Hz - 15.50 A
- Cast iron grates
- Wok ring included
- Residual heat indicator
- Dimensions: W 35-1/32" / H 2-11/16" / D 20-15/32"

#### 36" SEGMENTED COOKTOP / 1 GAS BURNER, 2 INDUCTION ZONES AND GRIDDLE



PM3611GX



Stainless and ceramic glass

- 1 brass burner 750-18,000 BTUs
- Maximum induction power per zone: 1,800 watts
- Thermocouple gas shut-off safety
- Propane conversion kit included
- Metal knobs
- Cast iron grate

- Wok ring included
- Residual heat indicator
- Electrical requirements: 120/208 V - 60 Hz - 20.20 A and 120/240 V - 60 Hz - 22.20 A
- Electric griddle: 800 Watts
- Dimensions: W 35-1/32" / H 2-11/16" / D 20-15/32"

#### 36" SEGMENTED COOKTOP / 5 INDUCTION ZONES



PM3601GX



Ceramic glass with stainless frame

- Maximum induction power per zone: 3,000 watts
- Metal knobs
- Residual heat indicator

- Electrical requirements: 120/208 Vac - 60 Hz - 40 A and 120/240 Vac - 60 Hz - 45.80 A
- Dimensions: W 35-1/32" / H 2-11/16" / D 20-15/32"



# PRODUCT GUIDE FEBRUARY 2017



## PROFESSIONAL Series

### BUILT-IN

### MODEL FINISH

#### 30" ELECTRIC COOKTOP - 4 RADIANT ELEMENTS



P304CERNE  Black Ceran + Metal Trim

- 4 zones > 2 x 1200W + 1100W + 1800W (double zone 2500W)
- Electromechanical controls - Push & Turn
- Metal coated knobs
- Electrical requirements: 120/208 Vac - 60 Hz - 24 A and 120/240 Vac - 60 Hz - 28 A
- Dimensions: W 30" / H 2-3/16" / D 18"

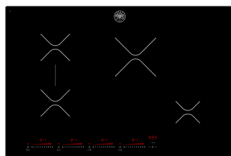
#### 24" ELECTRIC COOKTOP - 4 RADIANT ELEMENTS



P244CERNE  Black Ceran + Metal Trim

- 4 zones > 2 x 1200W + 2 X 1800W
- Electromechanical controls - Push & Turn
- Metal coated knobs
- Electrical requirements: 120/208 Vac - 60 Hz - 22 A and 120/240 Vac - 60 Hz - 25 A
- Dimensions: W 24" / H 3-1/8" / D 21"

#### 30" INDUCTION COOKTOP - 4 COOKING ZONES

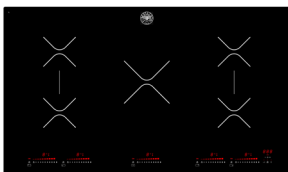


P304IAE  Bevelled Ceramic Glass

- Touch-through-glass controls
- 4 Induction zones of up to 3700W
- Timed cooking function for each heating zone
- 14 Power levels
- Dimensions: W 30 11/16" / D 20 15/32" / H 2 7/16"
- 1 bridge cooking zone
- Wear-resistant ceramic glass surface, easy to clean

**NEW**

#### 36" INDUCTION COOKTOP - 5 COOKING ZONES



P365IAE  Bevelled Ceramic Glass

- Touch-through-glass controls
- 5 Induction zones of up to 5500W
- Timed cooking function for each heating zone
- 14 Power levels
- Dimensions: W 34 5/8" / D 20 15/32" / H 2 7/16"
- 2 bridge cooking zone
- Wear-resistant ceramic glass surface, easy to clean

**NEW**



# PRODUCT GUIDE

## FEBRUARY 2017



### MASTER Series

**BUILT-IN**

**MODEL**

**FINISH**

**COOKING MODES:** 1 CONVECTION 2 BROILER 3 CONVECTION BROILER 4 CONVECTION BAKE 5 BAKE 6 TURBO 7 DEHYDRATION/DEFROSTING  
8 PROOFING 9 SABBATH MODE/WARMING (ONLY ON XT MODEL) 10 PYROLYTIC 11 AUTO COOKING MODE (ONLY ON XT MODEL)



#### 30" ELECTRIC CONVECTION OVEN - TOP VERSION

MASFS30XT	<input type="checkbox"/>	Stainless	SINGLE
MASFD30XT	<input type="checkbox"/>	Stainless	DOUBLE

- LCD touch control interface + knobs
- Flush front design
- Dual diagonal convection system
- Net usable volume: 4.1 cu.ft
- 4 heating elements: 3400W+2100W+2x1650W
- Pyrolytic self cleaning cycle
- 10 cooking modes + Assistant automated cooking
- 33 preset cooking modes sequences with Assistant
- Full extension telescopic slide out rack
- Meat probe
- Soft motion door with quadruple glass
- 7 shelf positions with 2 wire shelves
- 1 baking tray included
- Suitable for undercounter installation (single oven only)
- Double oven: fully featured cooking mode lower oven

#### Dimensions

SINGLE: W 29-3/4" / D min. 22-1/16" max. 23-1/16" / H 28-11/16"

DOUBLE: W 29-3/4" / D min. 22-1/16" max. 23-1/16" / H 53-1/4"



#### 30" ELECTRIC CONVECTION OVEN - VALUE VERSION

MASFS30XV	<input type="checkbox"/>	Stainless	SINGLE
MASFS30XV	<input type="checkbox"/>	Stainless	DOUBLE

- LED touch control interface + knobs
- Flush front design
- Dual diagonal convection system
- Net usable volume: 4.1 cu.ft
- 4 heating elements: 3400W+2100W+2x1650W
- Pyrolytic self cleaning cycle
- 9 cooking modes
- Soft motion door with quadruple glass
- 7 shelf positions with 2 wire shelves
- 1 baking tray included
- Suitable for undercounter installation (single oven only)
- Double oven: fully featured cooking mode lower oven

#### Dimensions

SINGLE: W 29-3/4" / D min. 22-1/16" max. 23-1/16" / H 28-11/16"

DOUBLE: W 29-3/4" / D min. 22-1/16" max. 23-1/16" / H 53-1/4"





# PRODUCT GUIDE

## FEBRUARY 2017



### MASTER Series

#### BUILT-IN

#### MODEL FINISH



#### 30" ELECTRIC CONVECTION SPEED OVEN

MASSO30X  Stainless

- Combination of electric convection + grill with microwave (6 fonctions) - Dimensions: W 29-3/4" / D 21-17/64" / H 18-5/8"
- Touch LED display + knobs
- Flush front design
- Oven volume: 1.34 cu.ft
- 5 preset auto cooking modes
- Cooling fan
- 1 glass turntable tray
- 2 shelf positions
- Suitable for under-counter installation



#### 30" ELECTRIC CONVECTION STEAM OVEN

MASCS30X  Stainless

- Combination of electric convection + grill with steam (6 fonctions) - Dimensions: W 29-3/4" / D 21-17/64" / H 18-5/8"
- Touch LED display + knobs
- Flush front design
- Oven volume: 1.10 cu.ft
- 1 stainless tray (40mm) and 1 perforated stainless tray (20mm)
- 2 shelf positions
- Suitable for under-counter installation



#### 30" CONVECTION WARMING DRAWER

MASWD30X  Stainless

- Capacity 1.5 cu.ft
- Flush front design
- Ceramic-finished drawer
- Soft closing operation
- Lateral convection & thermostat light
- Power rating 400W
- Max. Temperature 185° F
- Dimensions: W 29-7/8" / D 21-1/4" / H 10-3/64"



#### 48" RANGETOP / 6 BURNERS + GRIDDLE

CB48M6G00X  Stainless

- 6 brass burners 750-18,000 BTUs
- Electric griddle: 1100 Watts
- Cast iron professional grade grates
- Propane conversion kit included
- Thermocouple gas shut-off safety
- Metal knobs
- Wok ring, simmer plate and 3/4" backguard included
- Dimensions: W 47-13/16" / H 7-5/16" (with grates) / D 25-3/16"



#### 36" RANGETOP / 6 BURNERS

CB36M600X  Stainless

- 6 brass burners 750-18,000 BTUs
- Cast iron professional grade grates
- Propane conversion kit included
- Thermocouple gas shut-off safety
- Metal knobs
- Wok ring, simmer plate and 3/4" backguard included
- Dimensions: W 35-13/16" / H 7-5/16" (with grates) / D 25-3/16"



#### 36" RANGETOP / 5 BURNERS

CB36M500X  Stainless

- 5 brass burners 750-18,000 BTUs
- Cast iron professional grade grates
- Propane conversion kit included
- Thermocouple gas shut-off safety
- Metal knobs
- Wok ring, simmer plate and 3/4" backguard included
- Dimensions: W 35-13/16" / H 7-5/16" (with grates) / D 25-3/16"



# PRODUCT GUIDE

## FEBRUARY 2017



### MASTER Series

**BUILT-IN**

**MODEL**

**FINISH**

#### 36" GAS COOKTOP / 6 BURNERS - LOW PROFILE



QB36M600X



Stainless

- 6 brass burners 750-18,000 BTUs
- Cast iron professional grade grates
- Thermocouple gas shut-off safety
- Propane conversion kit included

- Low profile main top
- Metal knobs
- Wok ring and simmer plate included
- Dimensions: W 36-13/16" / H 2-11/16" / D 21-1/4"

#### 36" GAS COOKTOP / 5 BURNERS



QB36M500X



Stainless

- 5 brass burners 750-18,000 BTUs
- Cast iron professional grade grates
- Thermocouple gas shut-off safety
- Propane conversion kit included

- Low profile main top
- Metal knobs
- Wok ring and simmer plate included
- Dimensions: W 36-13/16" / H 2-11/16" / D 21-1/4"

#### 36" GAS COOKTOP / 5 BURNERS



Q36M500X



Stainless

- 5 aluminium burners 750-18,000 BTUs
- Cast iron professional grade grates
- Thermocouple gas shut-off safety
- Propane conversion kit included

- Low profile main top
- Metal coated knobs
- Wok ring and simmer plate included
- Dimensions: W 36-13/16" / H 2-11/16" / D 21-1/4"

#### 30" GAS COOKTOP / 4 BURNERS



QB30M400X



Stainless

- 4 brass burners 750-18,000 BTUs
- Cast iron professional grade grates
- Thermocouple gas shut-off safety
- Propane conversion kit included

- Low profile main top
- Metal knobs
- Wok ring and simmer plate included
- Dimensions: W 29-7/8" / H 2-5/8" / D 21-1/4"

#### 30" GAS COOKTOP / 4 BURNERS



Q30M400X



Stainless

- 4 aluminium burners 750-18,000 BTUs
- Cast iron professional grade grates
- Thermocouple gas shut-off safety
- Propane conversion kit included

- Low profile main top
- Metal coated knobs
- Wok ring and simmer plate included
- Dimensions: W 29-7/8" / H 2-5/8" / D 21-1/4"



# PRODUCT GUIDE

## FEBRUARY 2017



### REFRIGERATION

### MODEL

### FINISH

### HANDLE



Professional Series

#### 36" FREESTANDING FRENCH DOOR + HANDLE KIT

REF36X + PROHK36REF	<input type="checkbox"/>	No Fingerprint Stainless	Professional
REF36X + MASHK36REF	<input type="checkbox"/>	No Fingerprint Stainless	Master
REF36X + HERHK36REF	<input type="checkbox"/>	No Fingerprint Stainless	Heritage

- French door with two separate freezer drawers
- LED lights on sides and top part of the cabinet
- Open door alarm
- Door Storage: 2 stationary + 4 height adjustable (fit for 4 liter container)
- Shelves: 2 stationary / 4 height-adjustable
- Foldable glass shelf
- Interior LED touch-interface
- Temperature controlled crispener
- Drawers (refrigerator): 2 large + 1 small (humidity controlled)
- Drawers (freezer): 2 + 1 tray for ice cubes
- Automatic Ice maker (2.6 lbs/24 hr capacity of ice)
- Dimensions: W 35-7/8" / H 70" / D 30-3/4" (with handles)  
D 28-1/2" (without handles)

#### THE REFRIGERATOR MUST BE ORDERED WITH THE HANDLE



Master Series



Heritage Series



### ACCESSORIES

#### 30" HANDLE FOR REFRIGERATOR - PRO / HERITAGE SERIES

HK30PROX	W 30"	<input type="checkbox"/>	Stainless
HK30HERX	W 30"	<input type="checkbox"/>	Chrome

#### 36" HANDLE FOR REFRIGERATOR - HERITAGE SERIES

HK36HERX	W 36"	<input type="checkbox"/>	Chrome
----------	-------	--------------------------	--------



# PRODUCT GUIDE

## FEBRUARY 2017



### CLEAN UP

### MODEL

### FINISH

### HANDLE



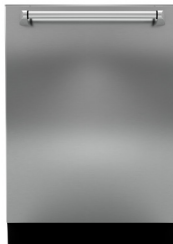
Professional Series

#### 24" BUILT-IN DISHWASHER + HANDLE KIT

DW24XT + PROHK24DW	<input type="checkbox"/>	No Fingerprint Stainless	Professional
DW24XT + MASHK24DW	<input type="checkbox"/>	No Fingerprint Stainless	Master
DW24XT + HERHK24DW	<input type="checkbox"/>	No Fingerprint Stainless	Heritage
DW24XV + PROHK24DW	<input type="checkbox"/>	No Fingerprint Stainless	Professional
DW24XV + MASHK24DW	<input type="checkbox"/>	No Fingerprint Stainless	Master
DW24XV + HERHK24DW	<input type="checkbox"/>	No Fingerprint Stainless	Heritage

- 6 washing cycles: heavy, auto, normal, quick, eco, rinse.
- Washing options: power zone (XT only), extra dry, sani boost, high temp, delay start 24h.
- Sound insulation: 45 db (XT) 48db (XV)
- Place settings: 16 (XT) 14 (XV)
- LED touch controls (concealed)
- Energy star certification
- Food disposer
- Spray arms: 4 (XT, including power zone) 3 (XV)
- Racks: 3 (XT, including flexible top drawer) 2 (XV)
- Turbo drying system
- 2 LED lights (XT only)
- Triple-stage filter in stainless steel and plastic
- Dimensions: W 23-3/4" / H 33-3/4" / D 24-1/2" (without handle)

#### THE DISHWASHER MUST BE ORDERED WITH THE HANDLE



Master Series



Heritage Series

### ACCESSORIES



#### 24" HANDLE FOR DISHWASHER - PRO / HERITAGE / MASTER SERIES

HK24PROX	W 24"	<input type="checkbox"/>	Stainless
HK24MASX	W 24"	<input type="checkbox"/>	Stainless
HK24HERX	W 24"	<input type="checkbox"/>	Chrome

#### PANELS FOR DISHWASHERS

DWPNLXG	W 24"	<input type="checkbox"/>	Stainless FOR BLOMBERG
DWPNLXH	W 24"	<input type="checkbox"/>	Stainless FOR BSH
DWPNLXO	W 24"	<input type="checkbox"/>	Stainless FOR ASKO



DWPNL\_ + HK24PROX  
Professional Series



DWPNL\_ + HK24MASX  
Master Series



DWPNL\_ + HK24HERX  
Heritage Series

Specifications and features may vary. Please refer to the manufacturer's website for the latest updates.



# PRODUCT GUIDE

## FEBRUARY 2017



### PROFESSIONAL Series

#### VENTILATION

#### MODEL FINISH

#### 48" UNDERMOUNT CANOPY HOOD - 2 MOTORS



KU48PRO2X/14



Stainless

- 1200 CFM (2 motors)
- Electronic controls (3 speeds)
- Stainless baffle filters

- 4 halogen lights
- Dimensions: W 47-13/16" / D 12" - 22-7/16" / H 10-1/8"
- Total H (incl. duct cover) 46-5/8" to 82-5/8"

#### 36" UNDERMOUNT CANOPY HOOD - 2 MOTORS



KU36PRO2X/14



Stainless

- 1200 CFM (2 motors)
- Electronic controls (3 speeds)
- Stainless baffle filters

- 4 halogen lights
- Dimensions: W 35-7/8" / D 12" - 22-7/16" / H 10-1/8"
- Total H (incl. duct cover) 46-5/8" to 82-5/8"

#### 48" UNDERMOUNT CANOPY HOOD



KU48PRO1X/14



Stainless

- 600 CFM (1 motor)
- Electronic controls (3 speeds)
- Aluminium mesh filters

- 2 halogen lights
- Dimensions: W 47-13/16" / D 12" - 19-5/16" / H 10-1/8"
- Total H (incl. duct cover) 46-5/8" to 82-5/8"

#### 36" UNDERMOUNT CANOPY HOOD



KU36PRO1X/14



Stainless

- 600 CFM (1 motor)
- Electronic controls (3 speeds)
- Aluminium mesh filters

- 2 halogen lights
- Dimensions: W 35-7/8" / D 12" - 19-5/16" / H 10-1/8"
- Total H (incl. duct cover) 46-5/8" to 82-5/8"

#### 30" UNDERMOUNT CANOPY HOOD



KU30PRO1X/14



Stainless

- 600 CFM (1 motor)
- Electronic controls (3 speeds)
- Aluminium mesh filters

- 2 halogen lights
- Dimensions: W 29-15/16" / D 12" - 19-5/16" / H 10-1/8"
- Total H (incl. duct cover) 46-5/8" to 82-5/8"

#### 24" UNDERMOUNT CANOPY HOOD



KU24PRO1X/14



Stainless

- 600 CFM (1 motor)
- Electronic controls (3 speeds)
- Aluminium mesh filters

- 2 halogen lights
- Dimensions: W 23-15/16" / D 12" - 19-5/16" / H 10-1/8"
- Total H (incl. duct cover) 46-5/8" to 82-5/8"





**PRODUCT GUIDE**  
**FEBRUARY 2017**



**PROFESSIONAL Series**

**VENTILATION**

**MODEL FINISH**

**36" UNDERMOUNT CANOPY HOOD - VALUE VERSION**



KU36PRO1XV	<input type="checkbox"/>	Stainless
<ul style="list-style-type: none"> <li>- 400 CFM (1 motor)</li> <li>- Slider controls (3 speeds)</li> <li>- 2 halogen lights</li> </ul>		<ul style="list-style-type: none"> <li>- Aluminium mesh filters</li> <li>- Dimensions: W 36" / D 17-33/64" / H 8-17/64"</li> </ul>

**30" UNDERMOUNT CANOPY HOOD - VALUE VERSION**



KU30PRO1XV	<input type="checkbox"/>	Stainless
<ul style="list-style-type: none"> <li>- 400 CFM (1 motor)</li> <li>- Slider controls (3 speeds)</li> <li>- 2 halogen lights</li> </ul>		<ul style="list-style-type: none"> <li>- Aluminium mesh filters</li> <li>- Dimensions: W 30" / D 17-33/64" / H 8-17/64"</li> </ul>

**24" UNDERMOUNT CANOPY HOOD - VALUE VERSION**



KU24PRO1XV	<input type="checkbox"/>	Stainless
<ul style="list-style-type: none"> <li>- 400 CFM (1 motor)</li> <li>- Slider controls (3 speeds)</li> <li>- 2 halogen lights</li> </ul>		<ul style="list-style-type: none"> <li>- Aluminium mesh filters</li> <li>- Dimensions: W 24" / D 17-33/64" / H 8-17/64"</li> </ul>

**46" INSERT HOOD - 2 MOTORS**



KIN46PROX	<input type="checkbox"/>	Stainless
<ul style="list-style-type: none"> <li>- 1000 CFM (2 motors)</li> <li>- Double electronic slider controls (3 speeds)</li> <li>- 4 halogen lights</li> </ul>		<ul style="list-style-type: none"> <li>- Stainless baffle filters</li> <li>- Dimensions: W 46" / D 18-1/2" / H 12-1/4"</li> </ul>

**36" INSERT HOOD - 2 MOTORS**



KIN36PROX	<input type="checkbox"/>	Stainless
<ul style="list-style-type: none"> <li>- 1000 CFM (2 motors)</li> <li>- Double electronic slider controls (3 speeds)</li> <li>- 4 halogen lights</li> </ul>		<ul style="list-style-type: none"> <li>- Stainless baffle filters</li> <li>- Dimensions: W 34-1/4" / D 18-1/2" / H 12-1/4"</li> </ul>

**30" INSERT HOOD**



KIN30PROX	<input type="checkbox"/>	Stainless
<ul style="list-style-type: none"> <li>- 600 CFM (1 motor)</li> <li>- Electronic with buttons + remote control (3 speeds)</li> <li>- 2 halogen lights</li> </ul>		<ul style="list-style-type: none"> <li>- European baffle filters</li> <li>- Dimensions: W 28-3/8" / D 15-3/4" / H 11-1/8"</li> </ul>

Specifications and features may vary. Please refer to the manufacturer's website for the latest updates.



# PRODUCT GUIDE

## FEBRUARY 2017



### PROFESSIONAL Series

#### VENTILATION

MODEL	FINISH
-------	--------

#### 48" WALLMOUNT HOOD



KG48CONX	<input type="checkbox"/>	Stainless + black glass
<ul style="list-style-type: none"> <li>- 600 CFM (1 motor)</li> <li>- 3 speed touch control glass panel (3 speeds)</li> <li>- Aluminium mesh filters (euro style)</li> <li>- 2 halogen lights</li> </ul>		<ul style="list-style-type: none"> <li>- Duct cover included</li> <li>- Dimensions: W 47-11/16" / D 18-1/2" / H 3-1/8"</li> <li>Total H 19-5/16" to 33-3/16"</li> </ul>

#### 36" WALLMOUNT HOOD



KG36CONX	<input type="checkbox"/>	Stainless + black glass
<ul style="list-style-type: none"> <li>- 600 CFM (1 motor)</li> <li>- 3 speed touch control glass panel (3 speeds)</li> <li>- Aluminium mesh filters (euro style)</li> <li>- 2 halogen lights</li> </ul>		<ul style="list-style-type: none"> <li>- Duct cover included</li> <li>- Dimensions: W 35-7/8" / D 18-1/2" / H 3-1/8"</li> <li>Total H 19-5/16" to 33-3/16"</li> </ul>

#### 30" WALLMOUNT HOOD



KG30CONX	<input type="checkbox"/>	Stainless + black glass
<ul style="list-style-type: none"> <li>- 600 CFM (1 motor)</li> <li>- 3 speed touch control glass panel (3 speeds)</li> <li>- Aluminium mesh filters (euro style)</li> <li>- 2 halogen lights</li> </ul>		<ul style="list-style-type: none"> <li>- Duct cover included</li> <li>- Dimensions: W 30-7/8" / D 18-1/2" / H 3-1/8"</li> <li>Total H 19-5/16" to 33-3/16"</li> </ul>

**NEW**

#### 48" WALLMOUNT HOOD



K48CONX/14	<input type="checkbox"/>	Stainless
<ul style="list-style-type: none"> <li>- 600 CFM (1 motor)</li> <li>- Electronic controls (3 speeds)</li> <li>- Aluminium mesh filters</li> <li>- 2 halogen lights</li> </ul>		<ul style="list-style-type: none"> <li>- Duct cover included</li> <li>- Dimensions: W 48" / D 19-11/16" / H 4-11/16"</li> <li>Total H 21-11/16" to 35-13/16"</li> </ul>

#### 36" WALLMOUNT HOOD



K36CONX/14	<input type="checkbox"/>	Stainless
<ul style="list-style-type: none"> <li>- 600 CFM (1 motor)</li> <li>- Electronic controls (3 speeds)</li> <li>- Aluminium mesh filters</li> <li>- 2 halogen lights</li> </ul>		<ul style="list-style-type: none"> <li>- Duct cover included</li> <li>- Dimensions: W 36" / D 19-11/16" / H 4-11/16"</li> <li>Total H 21-11/16" to 35-13/16"</li> </ul>

#### 30" VENTILATION MICROWAVE OVEN



KOTR30X	Stainless	
<ul style="list-style-type: none"> <li>- Designed to be located above the cooktop or range</li> <li>- Integrated, multi stage range hood function</li> <li>- Stainless steel front and black glass window</li> <li>- Oven volume: 1.6 cu.ft</li> <li>- 10 Power levels</li> </ul>		<ul style="list-style-type: none"> <li>- Dimensions: W 29 13/16" / D 14 7/8" / H 16 1/8"</li> <li>- Controls include pre-set functions, cooking timer and sensor controls for reheating and defrosting.</li> <li>- 300 CFM internal blower</li> </ul>

**NEW**



# PRODUCT GUIDE

## FEBRUARY 2017



### PROFESSIONAL Series

#### VENTILATION

#### MODEL FINISH



**NEW**

#### 30" TELESCOPIC VISOR HOOD

KTV24PRO1X	<input type="checkbox"/>	Stainless
<ul style="list-style-type: none"> <li>- 500 cfm (1 motor)</li> <li>- Touch-sensitive digital controls (3 speeds)</li> <li>- 2 halogen lights</li> </ul>		<ul style="list-style-type: none"> <li>- Aluminum mesh filters</li> <li>- Dimensions: W 30" / D 11" à 17-5/16" / H 1-5/8"</li> </ul>



**NEW**

#### 24" TELESCOPIC VISOR HOOD

KTV30PRO1X	<input type="checkbox"/>	Stainless
<ul style="list-style-type: none"> <li>- 500 cfm (1 motor)</li> <li>- Touch-sensitive digital controls (3 speeds)</li> <li>- 2 halogen lights</li> </ul>		<ul style="list-style-type: none"> <li>- Aluminum mesh filters</li> <li>- Dimensions: W 23-11/16" / D 11" à 17-5/16" / H 1-5/8"</li> </ul>

### HERITAGE Series

#### 48" WALLMOUNT HOOD



K48HERX/14	<input type="checkbox"/>	Stainless
<ul style="list-style-type: none"> <li>- 600 CFM (1 motor)</li> <li>- Electronic controls (3 speeds)</li> <li>- 2 halogen lights</li> <li>- Stainless baffle filters</li> </ul>		<ul style="list-style-type: none"> <li>- Must be sold with KC48 HER __</li> <li>- Dimensions: W 48" / D 19-11/16" / H 4-3/4"</li> <li>Total H (with canopy) 26-1/2" to 40-5/8"</li> </ul>

#### 48" CANOPY TO COMPLETE ASSEMBLY

KC48HERNE	<input type="checkbox"/>	NERO / Black
KC48HERCR	<input type="checkbox"/>	CREMA / Beige
KC48HERVI	<input type="checkbox"/>	VINO / Burgundy
- Chrome utensils bar included with the canopy		

#### 36" WALLMOUNT HOOD



K36HERX/14	<input type="checkbox"/>	Stainless
<ul style="list-style-type: none"> <li>- 600 CFM (1 motor)</li> <li>- Electronic controls (3 speeds)</li> <li>- 2 halogen lights</li> <li>- Stainless baffle filters</li> </ul>		<ul style="list-style-type: none"> <li>- Must be sold with KC36 HER __</li> <li>- Dimensions: W 36" / D 19-11/16" / H-4 3/4"</li> <li>Total H (with canopy) 26-1/2" to 40-5/8"</li> </ul>

#### 36" CANOPY TO COMPLETE ASSEMBLY

KC36HERNE	<input type="checkbox"/>	NERO / Black
KC36HERCR	<input type="checkbox"/>	CREMA / Beige
KC36HERVI	<input type="checkbox"/>	VINO / Burgundy
- Chrome utensils bar included with the canopy		

Specifications and features may vary. Please refer to the manufacturer's website for the latest updates.



# PRODUCT GUIDE

## FEBRUARY 2017



### ACCESSORIES

### MODEL

### FINISH

**ALL Series  
Consult Ventilation  
Accessories Guide  
at page 34**

#### DUCT COVER

901261	Full Width	Stainless
901262	Narrow/Tall	Stainless
901263	Medium	Stainless
901265	Full Width	Stainless
901266	Full Width	Stainless
901281	Narrow/Short	Stainless



901261



901262



901263



901265



901266



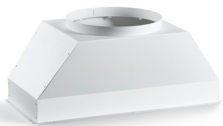
901281

#### DUCT EXTENSION KITS

901255	- For all PRO hood models
901363	- For all CON/14 and HER/14 hood models

#### AIR BRACKET FOR 48" & 36" PRO - 2 MOTORS

901264	- For KU48 PRO 2X - KU36 PRO 2X
	- Diameter: 9-13/16"



#### FLOW THROUGH RESTRICTOR

Z130018	- Reducing performance from 440 or 600 cfm hoods to 300 cfm.
	- Can be installed with all range hood models except 1000 and 1200 cfm models.

#### RECIRCULATION KITS

901271
901335
901336
901394
901395
901396
901397
901426
901430
901452
901453

**ALL Series  
Consult Ventilation  
Accessories Guide  
at page 34**





# PRODUCT GUIDE

## FEBRUARY 2017



### ACCESSORIES

### MODEL

### FINISH



#### BAFFLE FILTER KIT FOR 30" WIDE HOOD - PRO SERIES

901366  Stainless

- For hood [KU30 PRO/14](#) - 1 package contains 3 filters

#### BAFFLE FILTER KIT FOR 24", 36" AND 48" WIDE HOODS - PRO SERIES

901365  Stainless

- For hoods [KU24 PRO/14](#), [KU36 PRO/14](#) and [KU48 PRO/14](#)  
 - 1 package contains 4 filters suitable for all 3 hoods: 24" requires 2 filters / 36" requires 3 filters / 48" requires 4 filters.

#### BAFFLE FILTER KIT FOR 36" & 48" WIDE HOOD - MASTER / HERITAGE

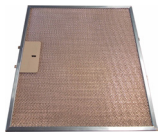
901364  Stainless

- For hoods [K36 CON/14](#), [K48 CON/14](#), [K36 HER/14](#) and [K48 HER/14](#)  
 - 1 package contains 4 filters: 36" requires 3 filters / 48" requires 4 filters.

#### MESH FILTER KIT FOR 24", 36" AND 48" WIDE HOODS - PROFESSIONAL

901402 Aluminum

- For hoods [KU24 PRO1 X/14](#), [KU36 PRO1 X/14](#) and [KU48 PRO1 X/14](#)  
 - For hoods [KU24 PRO1 XV](#) and [KU36 PRO1 XV](#)  
 - 1 package contains 4 filters (W 10-15/16" D 11-1/2" H 1/4")



#### MESH FILTER KIT FOR 30" WIDE HOODS - PROFESSIONAL

901403 Aluminum

- For hoods [KU30 PRO1 X/14](#) and [KU30 PRO1 XV](#) - 1 package contains 4 filters (W 12-15/16" D 11-1/2" H 1/4")

#### MESH FILTER KIT FOR 36" AND 48" WIDE HOOD - PRO & HERITAGE

901404 Aluminum

- For hoods [K36 CON X/14](#) and [K48 CON X/14](#)  
 - For hoods [K36 HER X/14](#) and [K48 HER X/14](#)  
 - 1 package contains 4 filters (W 10-15/16" D 11-1/2" H 1/4")



# PRODUCT GUIDE

## FEBRUARY 2017



### ACCESSORIES

### MODEL

### FINISH



#### 48" HERITAGE SERIES BACKSPLASH WITH UTENSIL BAR

BS48HERX Stainless

- Dimensions: W 47-13/16" / H 26-9/16"



#### 36" HERITAGE SERIES BACKSPLASH WITH UTENSIL BAR

BS36HERX Stainless

- Dimensions: W 35-13/16" / H 26-9/16"



#### 48" PRO & MASTER RANGE BACKSPLASH

SP48STAX Stainless

- Dimensions: W 47-13/16" / H 26-9/16"



#### 36" PRO & MASTER RANGE BACKSPLASH

SP36STAX Stainless

- Dimensions: W 35-13/16" / H 26-9/16"



#### 30" PRO & MASTER RANGE BACKSPLASH

SP30STAX Stainless

- Dimensions: W 29-13/16" / H 26-9/16"



#### 24" PRO RANGE BACKSPLASH

SP24STAX Stainless

- Dimensions: W 23-3/4" / H 26-9/16"



# PRODUCT GUIDE

## FEBRUARY 2017



### ACCESSORIES

### MODEL

### FINISH

#### 3/4" ISLAND TRIM FOR ALL SERIES - PRO / HERITAGE / MASTER



IRF48X	W 48"	<input type="checkbox"/>	Stainless
IRF36X	W 36"	<input type="checkbox"/>	Stainless
IRF30X	W 30"	<input type="checkbox"/>	Stainless
IRF24X	W 24"	<input type="checkbox"/>	Stainless

#### 36" SIDE TRIM SET FOR PRO / MASTER SERIES (2 pieces)



ST36X	<input type="checkbox"/>	Stainless Steel
ST36AR	<input type="checkbox"/>	ARANCIO / Orange
ST36BI	<input type="checkbox"/>	BIANCO / Pure White
ST36GI	<input type="checkbox"/>	GIALLO / Yellow
ST36RO	<input type="checkbox"/>	ROSSO / Red
ST36VI	<input type="checkbox"/>	VINO / Burgundy
ST36NE	<input type="checkbox"/>	NERO / Black

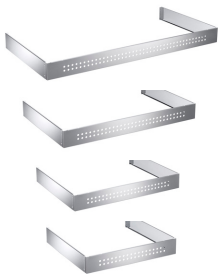
- Lateral trim for open-sided installation (W: 3-3/4" / H: 30-1/2")

#### 36" SIDE TRIM SET FOR HERITAGE (2 pieces)

ST36HERNE	<input type="checkbox"/>	NERO / Black
ST36HERCR	<input type="checkbox"/>	CREMA / Beige
ST36HERVI	<input type="checkbox"/>	VINO / Burgundy

- Lateral trim for open-sided installation

#### 4" TOEKICK PANEL FOR PRO / HERITAGE / MASTER SERIES



TKS48X	W 48"	<input type="checkbox"/>	Stainless
TKS36X	W 36"	<input type="checkbox"/>	Stainless
TKS30X	W 30"	<input type="checkbox"/>	Stainless
TKS24X	W 24"	<input type="checkbox"/>	Stainless



# PRODUCT GUIDE FEBRUARY 2017



## ACCESSORIES

## MODEL FINISH



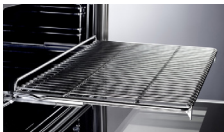
### SIMMER PLATE

408077	<input checked="" type="checkbox"/>	Cast Iron
--------	-------------------------------------	-----------



### WOK RING

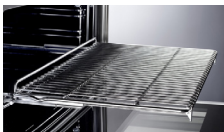
408084	<input checked="" type="checkbox"/>	Cast Iron
--------	-------------------------------------	-----------



### 36" TELESCOPIC GLIDE SHELF SET

TGSCS36	<input type="checkbox"/>	Chrome
---------	--------------------------	--------

- For dual self clean range models fits 36" Ranges - Wire shelf included



### 30" AND 48" TELESCOPIC GLIDE SHELF SET

TGSCS30	<input type="checkbox"/>	Chrome
---------	--------------------------	--------

- For dual self clean range models fits 30" and 48" Ranges (main cavity only) - Wire shelf included



### 30" TELESCOPIC GLIDE SHELF SET

TG	<input type="checkbox"/>	Chrome
----	--------------------------	--------

- For 30" wall oven (1 set) - Wire shelf included



### TELESCOPIC GLIDE SHELF SET

TGC	<input type="checkbox"/>	Chrome
-----	--------------------------	--------

- For all gas and electric cavity manual clean range models - Wire shelf NOT included



### PORTABLE GRIDDLE FOR 6 BURNERS CONFIGURATION

SG36X	<input type="checkbox"/>	Stainless Steel
-------	--------------------------	-----------------

### GRIDDLE PLATE - FOR ALL RANGES

C I PAN	<input checked="" type="checkbox"/>	Cast Iron
---------	-------------------------------------	-----------

### PORCELAIN TRAY

901272		Porcelain
--------	--	-----------

### GLASS TRAY

901273		Glass
--------	--	-------







**2017 VENTILATION ACCESSORIES GUIDE**

Range hood Category	Series	Size	Model #	Duct cover	Duct cover extension	Recirculation kit	Air bracket for 2 in 1 ducting	Baffle Filters	Mesh Filters	Flow through Restrictor *	
Cabinet Mount/ Visor Hood	ALL	24"	<b>KTV24PRO1X</b>	n/a	n/a	901453	n/a	n/a	n/a	n/a	
		30"	<b>KTV30PRO1X</b>	n/a	n/a	901453	n/a	n/a	n/a	Z130018	
Wall Mount	Design	30"	<b>KG30CONX</b>	included	not available	901271	n/a	n/a	n/a	Z130018	
		36"	<b>KG36CONX</b>	included	not available	901271	n/a	n/a	n/a	Z130018	
	<b>K36CONX/14</b>		included	901363	901426 Kit diverter + charcoal filters 901395 kit charcoal filters	n/a	901364	901404	Z130018		
	<b>KG48CONX</b>		included	not available	901271	n/a	n/a	n/a	Z130018		
	<b>K48CONX/14</b>		included	901363	901426 Kit diverter + charcoal filters 901395 kit charcoal filters	n/a	901364	901404	Z130018		
	Heritage	36"	<b>K36HERX/14</b>	included	not available	901426 Kit diverter + charcoal filters 901395 kit charcoal filters	n/a	901364	901404	n/a	
		48"	<b>K48HERX/14</b>	included	not available	901426 Kit diverter + charcoal filters 901395 kit charcoal filters	n/a	901364	901404	n/a	
	Undermount/ Wall Mount	Professional	24"	<b>KU24PRO1X/14</b>	Narrow 901262 Narrow ceiling 8-10ft 901281	901255	901426 Kit diverter + charcoal filters 901394 kit charcoal filters	n/a	901365	n/a	Z130018
<b>KU24PRO1XV</b>				Narrow 901262 Narrow ceiling 8-10ft 901281	901255	901396 recirculation kit 901430 charcoal filter kit	n/a	n/a	901402	Z130018	
30"			<b>KU30PRO 1 XV</b>	Narrow 901262 Narrow ceiling 8-10ft 901281 Medium 901263 Full Width 901266	901255	901335 recirculation kit 901430 charcoal filter kit	n/a	n/a	901403	Z130018	
			<b>KU30PRO1X/14</b>	Narrow 901262 Narrow ceiling 8-10ft 901281 Medium 901263 Full Width 901266	901255	901426 Kit diverter + charcoal filters 901394 kit charcoal filters	n/a	901366	901403	Z130018	
			<b>KU36PRO1XV</b>	Narrow 901262 Narrow ceiling 8-10ft 901281 Medium 901263 Full Width 901265	901255	901336 recirculation kit 901430 charcoal filter kit	n/a	n/a	901402	Z130018	
			<b>KU36PRO1X/14</b>	Narrow 901262 Narrow ceiling 8-10ft 901281 Medium 901263 Full Width 901265	901255	901426 Kit diverter + charcoal filters 901394 kit charcoal filters	n/a	901365	901402	Z130018	
36"			<b>KU36PRO2X/14</b>	Medium 901263 Full Width 901265	901255	n/a	901264	901365	n/a	n/a	
			48"	<b>KU48PRO1X/14</b>	Narrow 901262 Narrow ceiling 8-10ft 901281 Full Width 901261	901255	901426 Kit diverter + charcoal filters 901394 kit charcoal filters	n/a	901365	901402	Z130018
				<b>KU48PRO2X/14</b>	Medium 901263 Full Width 901261	901255	n/a	901264	901365	n/a	n/a
			Liners	ALL	30"	<b>KIN30PROX</b>	n/a	n/a	901397	n/a	n/a
36"	<b>KIN36PROX</b>	n/a			n/a	901397	included	n/a	n/a	n/a	
46"	<b>KIN46PROX</b>	n/a			n/a	901397	included	n/a	n/a	n/a	
OTR	ALL	30"	<b>KO30PROX</b>	n/a	n/a	n/a	n/a	n/a	n/a	n/a	
			<b>KOTR30X</b>	n/a	n/a	901452	n/a	n/a	n/a	n/a	

\*Available only as a Spare



# PRODUCT GUIDE



[www.bertazzoni.com](http://www.bertazzoni.com)

PROUDLY DISTRIBUTED BY



DISTINCTIVE  
APPLIANCES INC.

INSPIRING LIFESTYLES  
FOR OVER 35 YEARS

QUEBEC - ONTARIO - MARITIMES

T 800 361 0799 F 450 682 7943

[www.distinctive-online.com](http://www.distinctive-online.com) [info@distinctive-online.com](mailto:info@distinctive-online.com)

## ADMINISTRATION

1795 Autoroute Laval Ouest, Laval (QC) H7L 3W3

## SHOWROOMS

8210 Devonshire Road, Town of Mount Royal (QC) H4P 2P7

6900 Airport Road (Suite 206), Mississauga (ON) L4V 1E8

## PART & SERVICE

[service@distinctive-online.com](mailto:service@distinctive-online.com)

## ORDER DESK

[orderdesk@distinctive-online.com](mailto:orderdesk@distinctive-online.com)

**REV\_FEB.23.2017**