

## PARTS LIST / LISTE DES PIÈCES / LISTA DE PIEZA

ITEM / NO D'ARTICLE / ARTICULO.: P301792

Description/ La Description / Descripción: Cabinet / Armoire / Gabinete

**⚠ WARNING**



**Children have died from furniture tipover. To reduce the risk of furniture tipover:**

- ALWAYS install anti-tip device provided.
- NEVER put a TV on this product.
- NEVER allow children to stand, climb, or hang on any drawers, doors, or shelves.
- NEVER open more than one drawer at a time.
- Place heaviest items in the lowest drawers.

*This is a permanent label. Do not remove!*



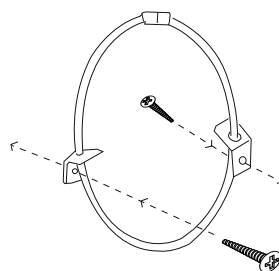
• ALWAYS install anti-tip device provided.

• NEVER put a TV on this product.

• NEVER allow children to stand, climb, or hang on any drawers, doors, or shelves.

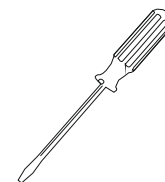
• NEVER open more than one drawer at a time.

• Place heaviest items in the lowest drawers.

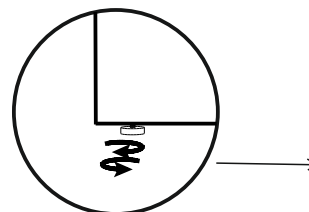


A

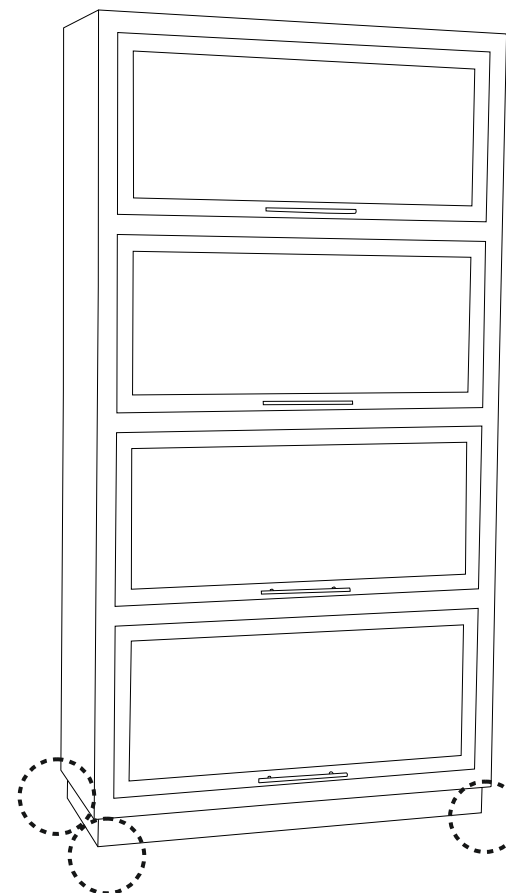
x2 Furniture Tipping Restraint  
x2 Systeme antibasculement  
x2 Control para evitar vulcos



(Not Included)



**NOTE:-  
ADJUST LEVELER IF NEEDED TO LEVEL  
CABINET ON UNEVEN FLOOR**



\*Replaceable Part

**⚠ WARNING**



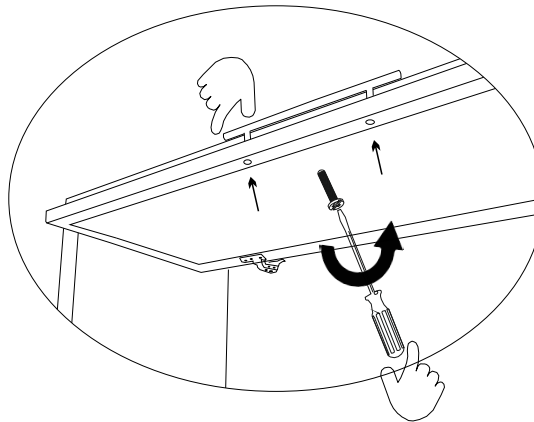
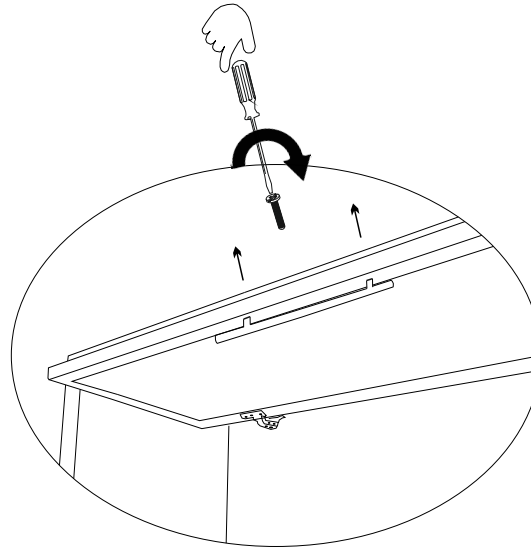
**Children have died from furniture tipover. To reduce the risk of furniture tipover:**

- ALWAYS install anti-tip device provided.
- NEVER put a TV on this product.
- NEVER allow children to stand, climb, or hang on any drawers, doors, or shelves.
- NEVER open more than one drawer at a time.
- Place heaviest items in the lowest drawers.

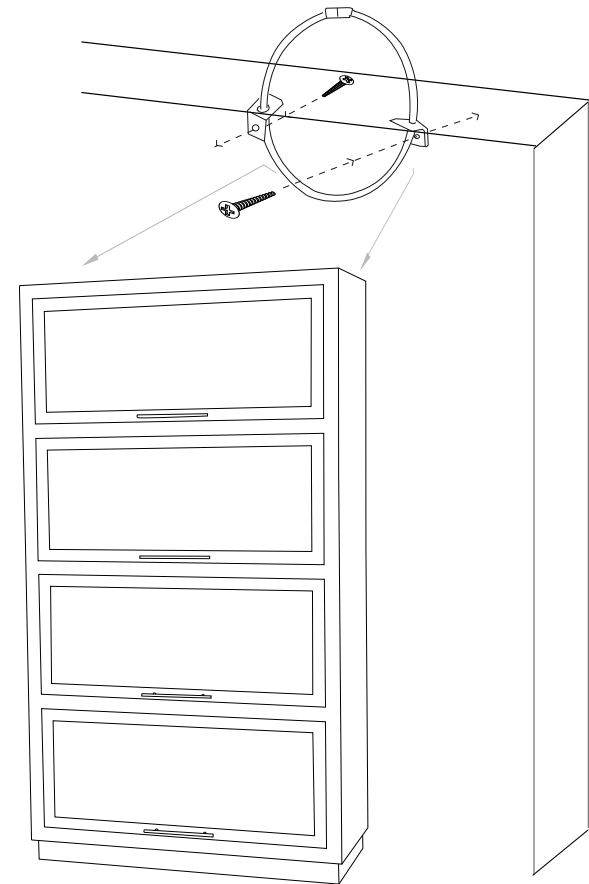
*This is a permanent label. Do not remove!*



• NEVER put a TV on this product.



Wall  
Mur  
Pared

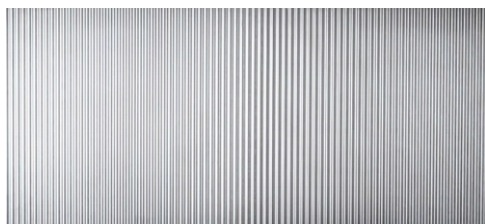


\* Replaceable Part

**REPLACEABLE PART / PARTIE REMPLAÇABLE / PARTE REEMPLAZABLE**

ITEM / NO D'ARTICLE / ARTICULO.: P301792

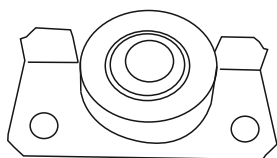
Description/ La Description / Descripción: Cabinet / Armoire / Gabinete



**RP301792-GLASS** - Glass door  
Porte vitrée  
Puerta de vidrio



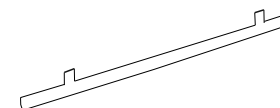
**RP301792-GLIDE** - Drawer glides  
Glissières de tiroir  
Guías para cajones



**RP301792-WHEEL** - Sliding Wheel  
Roue coulissante  
Rueda deslizante



**RP301792-CATCH** - Magnet catch  
Loqueteau magnétique  
Captura magnética



**RP301792-PULL** - Pull with screws  
Tirer avec des vis  
Tirar con tornillos

*\* Replaceable Part*

## **Protect Your Wood or Laminate Flooring**

\*This statement applies to any floor without carpet.

If not careful, all furniture including upholstery and case pieces can scratch, scuff and even gouge floors. The recommendation is to have felt, rubber pads or area rugs under furniture on flooring without carpet.

### **Moving your furniture**

Pushing and dragging furniture over floors without carpet can lead to scratches and scuffs. Have someone help when moving the larger pieces of furniture by lifting, try using a dolly or moving pads.

### **Felt and rubber pads**

Applying furniture pads to the feet of furniture helps cushion contact points. Furniture pads can be found at local hardware stores. Felt pads slide easily across the floor, making them ideal for dining chairs and other pieces that move with use. Rubber pads will help furniture stay in place and are perfect for larger pieces, like sofas and loveseats.

### **Area rugs and rug pads**

Using an area rug under furniture is another way to protect your floor from scratches and scuffmarks. A rug pad under the area rug will provide extra cushion and added protection.