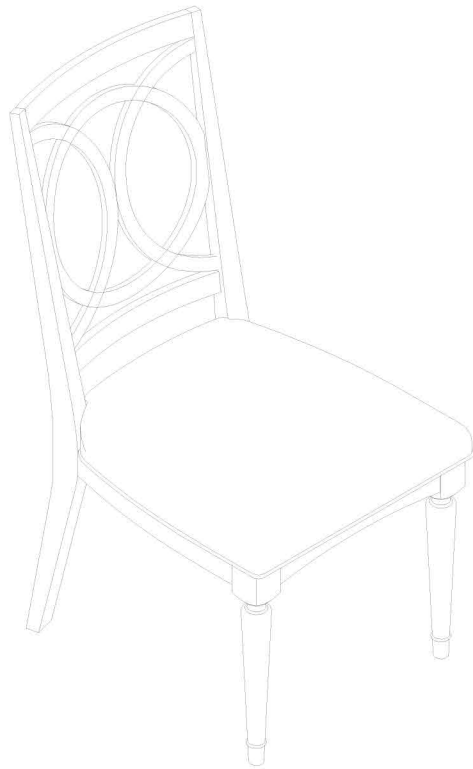


PARTS LIST / LISTE DES PIÈCES / LISTA DE PIEZAS

DESCRIPTION / LA DESCRIPCION / DESCRIPCIÓN : BACK SIDE CHAIR / CHAISE D'APPOINT / SILLA



(A)

x1 Chair Back *
x1 Dossier de chaise
x1 Respaldo de silla



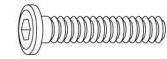
(B)

x1 Seat Frame *
x1 Cadre du Siège
x1 Armadura del asiento



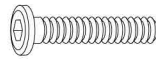
(C)

x2 Legs *
x2 Jambes
x2 Piernas



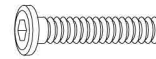
(D)

x2 Allen bolt $\phi 5/16$ "x38mm *
x2 Vis à tête creuse hexagonale $\phi 5/16$ "x38mm
x2 Perno Allen $\phi 5/16$ "x38mm



(E)

x4 Allen bolt $\phi 5/16$ "x57mm *
x4 Vis à tête creuse hexagonale $\phi 5/16$ "x57mm
x4 Perno Allen $\phi 5/16$ "x57mm



(F)

x4 Allen bolt $\phi 5/16$ "x83mm *
x4 Vis à tête creuse hexagonale $\phi 5/16$ "x83mm
x4 Perno Allen $\phi 5/16$ "x83mm



(G)

x10 Lock washer $\phi 5/16$ "*
x10 Rondelle de blocage $\phi 5/16$ "
x10 Arandela de Seguridad $\phi 5/16$ "



(H)

x10 Flat Washer $\phi 5/16$ "x22x1.5mm *
x10 Rondelle plate $\phi 5/16$ "x22x1.5mm
x10 Arandela plana $\phi 5/16$ "x22x1.5mm



(I)

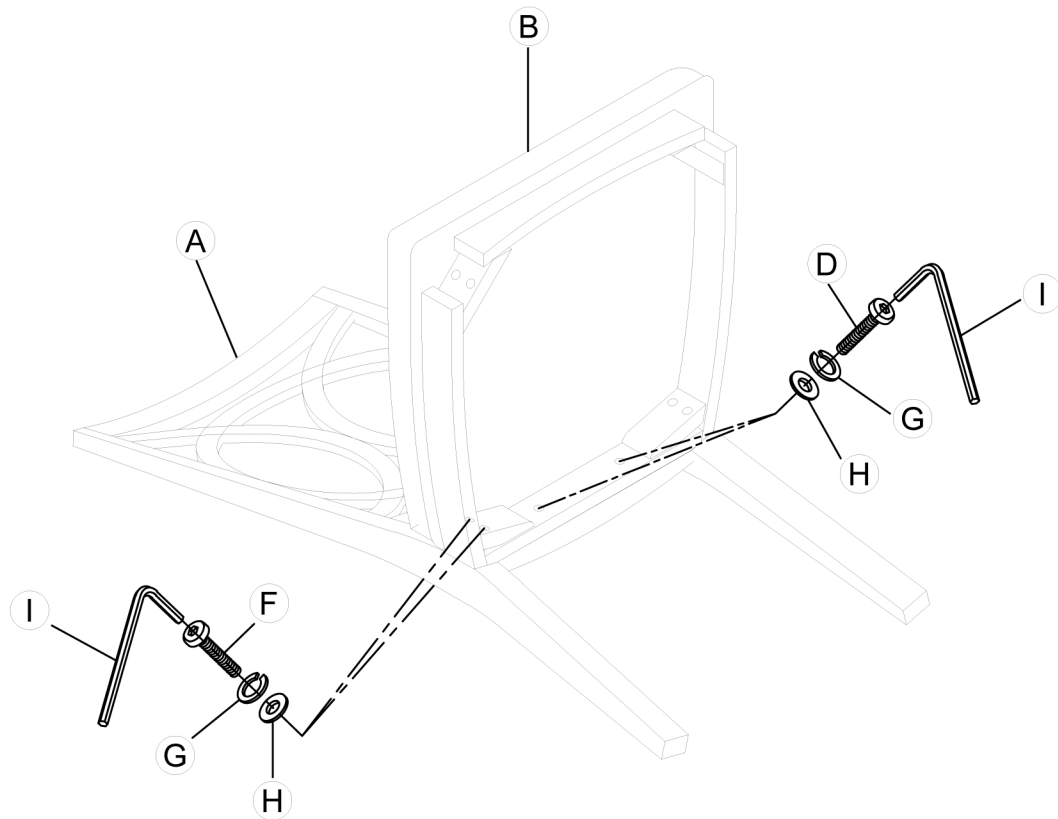
x1 Allen Key 5mm *
x1 Clé hexagonale 5mm
x1 Llave Allen 5mm

* Replaceable Part

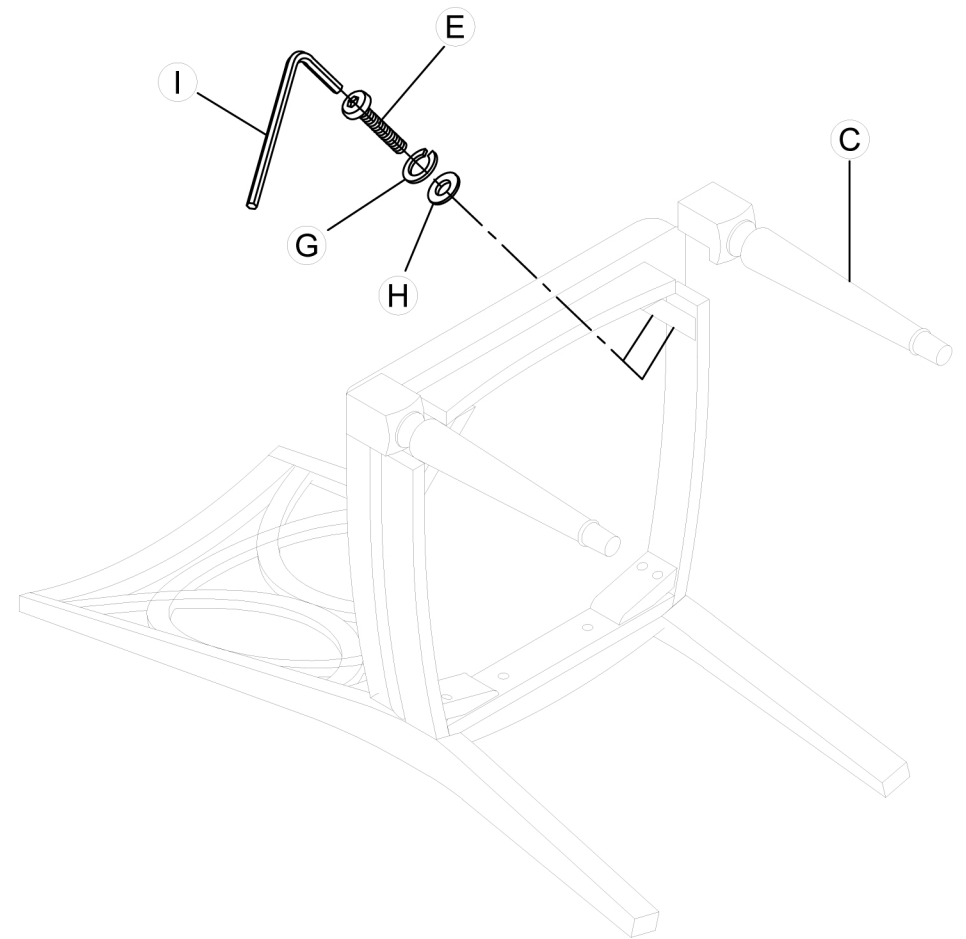
ASSEMBLY INSTRUCTIONS / NO TICE DE MONTAGE / INSTRUCCIONES DE MONTAJE

DESCRIPTION / LA DESCRIPCION / DESCRIPCIÓN : BACK SIDE CHAIR / CHAISE D'APPOINT / SILLA

1



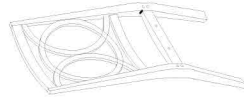
2



* Replaceable Part

REPLACEABLE PART / PARTIE REMPLAÇABLE / PARTE REEMPLAZABLE

DESCRIPTION / LA DESCRIPCION / DESCRIPCIÓN : BACK SIDE CHAIR / CHAISE D'APPOINT / SILLA



x1 RP344260-BACK-Chair Back *
Dossier de chaise
Respaldo de silla



x1 RP344260-FRAME - Seat Cushion *
Coussins de siège
Cojines de asientos



x2 RP344260-LEGF - Front Leg *
Patte avant
Pata delantera



x1 RP344260-HWKIT-Hardware Kit *
Liste des pièces de quincaillerie
Lista del kit de materiales

* Replaceable Part

Protect Your Wood or Laminate Flooring

*This statement applies to any floor without carpet.

If not careful, all furniture including upholstery and case pieces can scratch, scuff and even gouge floors. The recommendation is to have felt, rubber pads or area rugs under furniture on flooring without carpet.

Moving your furniture

Pushing and dragging furniture over floors without carpet can lead to scratches and scuffs. Have someone help when moving the larger pieces of furniture by lifting, try using a dolly or moving pads.

Felt and rubber pads

Applying furniture pads to the feet of furniture helps cushion contact points. Furniture pads can be found at local hardware stores. Felt pads slide easily across the floor, making them ideal for dining chairs and other pieces that move with use. Rubber pads will help furniture stay in place and are perfect for larger pieces, like sofas and loveseats.

Area rugs and rug pads

Using an area rug under furniture is another way to protect your floor from scratches and scuff marks. A rug pad under the area rug will provide extra cushion and added protection.